

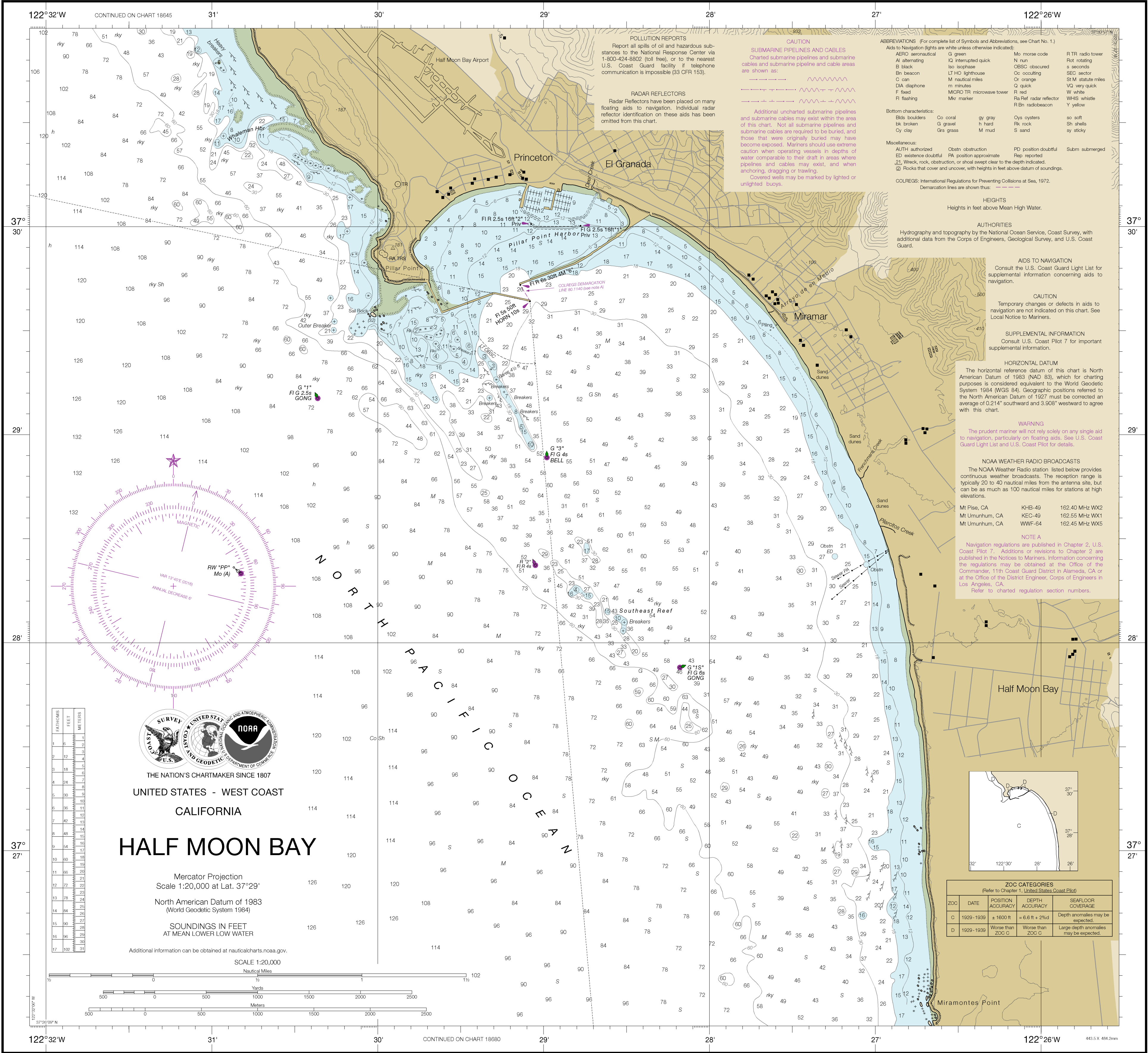
SOUNDINGS IN FEET

NOAA encourages users to submit inquiries, discrepancies or comments about this chart at <http://www.nauticalcharts.noaa.gov/staff/contact.htm>.

Formerly C&GS 5520, 1st Ed., June 1892 C-1863-1 KAPP 1867

TIDAL INFORMATION		Height referred to datum of soundings (MLLW)		
NAME	(LAT/LONG)	Mean Higher High Water	Mean High Water	Mean Low Water
		feet	feet	feet
Pillar Point Harbor, Half Moon Bay, California	(37°30'N/122°29'W)	5.6	5.0	1.1

Dashes (---) located in datum columns indicate unavailable datum values for a tide station. Real-time water levels, tide predictions, and tidal current predictions are available on the internet from <http://tidesandcurrents.noaa.gov>. (Mar 2016)



18682

SOUNDINGS IN FEET

Half Moon Bay  
SOUNDINGS IN FEET - SCALE 1:20,000

18682

15th Ed., Apr. 2016. Last Correction: 11/20/2018. Cleared through:  
LNM: 4718 (11/20/2018), NM: 4718 (11/24/2018)

This chart was distributed as a PDF (Portable Document Format). Printing PDFs may alter the chart scale, color, or legibility that may impact suitability for navigation. Printed charts provided by NOAA certified Print on Demand (POD) providers fulfill a vessel's requirement to carry a navigational chart "published by the National Ocean Service" in accordance with federal regulations, including but not limited to 33 C.F.R. 164.33(a), 33 C.F.R. 164.72(b), and 46 C.F.R. 28.225(a). POD charts meet stringent print standards and can be recognized by an official certification of authenticity printed on the chart. A list of POD providers can be found at: [nauticalcharts.noaa.gov/pod](http://nauticalcharts.noaa.gov/pod)

To ensure that this chart was printed at the proper scale, the line below should measure six inches (152 millimeters).  
If the line does not measure six inches (152 millimeters), this copy is not certified safe for navigation.