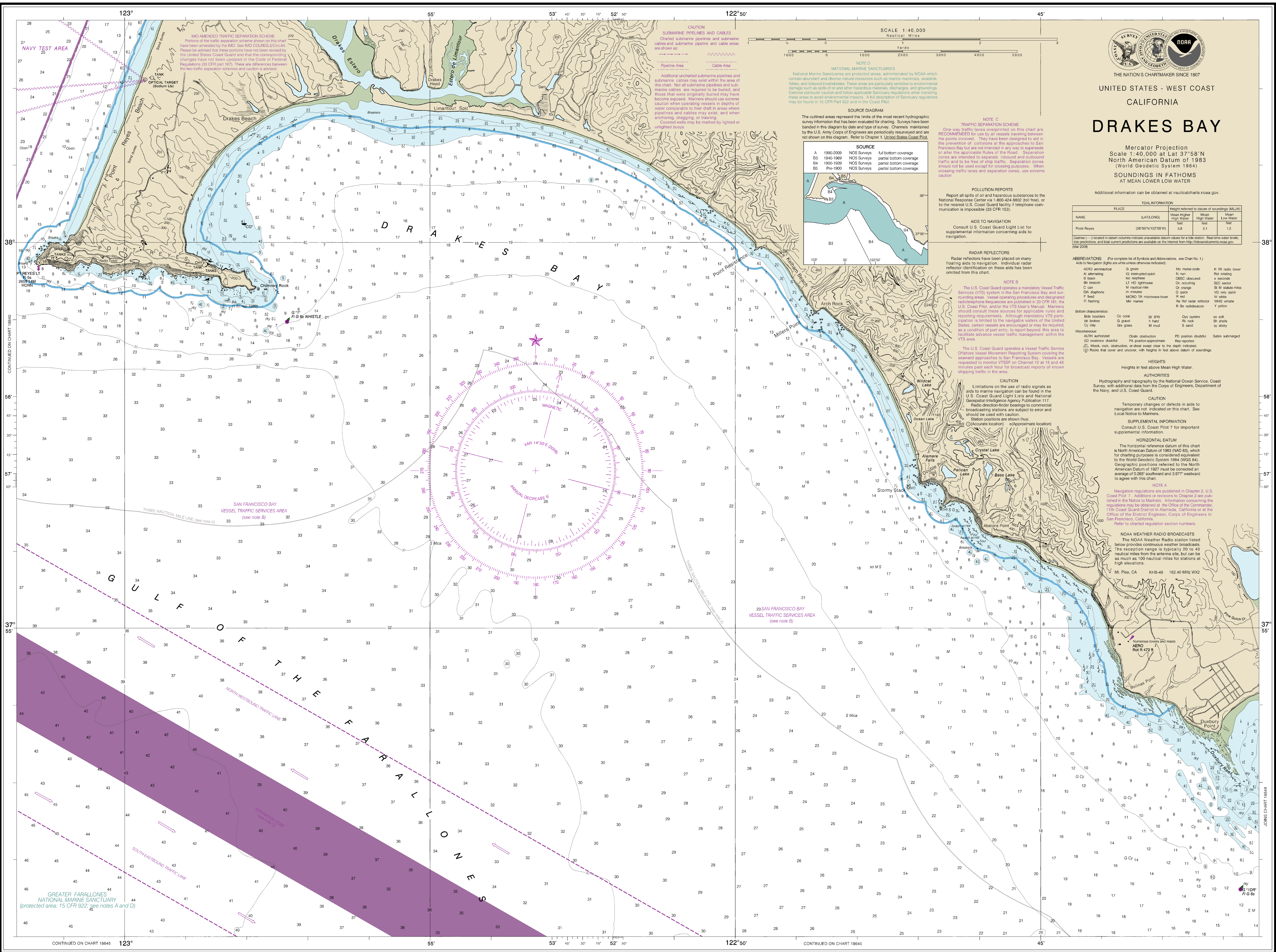


NOAA encourages users to submit inquiries, discrepancies or comments about this chart at <http://www.nauticalcharts.noaa.gov/staff/contact.htm>.

NOTE A  
Within the 12-nautical mile Territorial Sea, established by Presidential Proclamation, some Federal laws apply. The Three Nautical Mile Line, previously identified as the outer limit of the territorial sea, is retained as a continues to depict the jurisdictional limit of the other laws. The 9-nautical mile Natural Resource Boundary off the Gulf coast of Florida, Texas, and Puerto Rico, and the Three Nautical Mile Line elsewhere remain in most cases the inner limit of Federal fisheries jurisdiction and the outer limit of the jurisdiction of the states. The 24-nautical mile Contiguous Zone and the 200-nautical mile Exclusive Economic Zone were established by Presidential Proclamation. Unless fixed by treaty or the U.S. Supreme Court, these maritime limits are subject to modification.

Formerly C&GS 5589, 1st Ed., June 1992. C-1897-21 K&P® 1821

SOUNDINGS IN FATHOMS



18647

CAUTION  
This chart has been corrected from the Notice to Mariners (NM) published weekly by the National Geospatial-Intelligence Agency and the Local Notice to Mariners (LNM) issued periodically by each U.S. Coast Guard district to the dates shown in the lower left hand corner. Chart updates corrected from Notice to Mariners published after the dates shown in the lower left hand corner are available at [nauticalcharts.noaa.gov](http://nauticalcharts.noaa.gov).

SOUNDINGS IN FATHOMS

Published at Washington, D.C.  
U.S. DEPARTMENT OF COMMERCE  
NATIONAL OCEANIC AND ATMOSPHERIC ADMINISTRATION  
NATIONAL OCEAN SERVICE  
COAST SURVEY

WARNING  
The prudent mariner will not rely solely on any single aid to navigation, particularly on floating aids. See U.S. Coast Guard Light List and U.S. Coast Pilot for details.

FATHOMS	1	2	3	4	5	6	7	8	9	10	11	12	13	14	15	16	17	18	19	20	21	22	23	24	25	26	27	28	29	30
FEET	6	12	18	24	30	36	42	48	54	60	66	72	78	84	90	96	102	108	114	120	126	132	138	144	150	156	162	168	174	180
METERS	1	2	3	4	5	6	7	8	9	10	11	12	13	14	15	16	17	18	19	20	21	22	23	24	25	26	27	28	29	30

Drakes Bay  
SOUNDINGS IN FATHOMS - SCALE 1:40,000

18647

16th Ed., Mar. 2009, Last Correction: 5/11/2018, Cleared through:  
LNM: 4218 (10/16/2018), NM: 4318 (10/27/2018)  
To ensure that this chart was printed at the proper scale, the line below should measure 56 inches (1422 millimeters).  
If the line does not measure 56 inches (1422 millimeters), this copy is not certified safe for navigation.

This chart was distributed as a PDF (Portable Document Format). Printing PDFs may alter the chart scale, color, or legibility that may impact suitability for navigation. Printed charts provided by NOAA certified Print on Demand (POD) providers fulfill a vessel's requirement to carry a navigational chart "published by the National Ocean Service" in accordance with federal regulations, including but not limited to 33 C.F.R. 164.33(a), 33 C.F.R. 164.72(b), and 46 C.F.R. 28.225(a). POD charts meet stringent print standards and can be recognized by an official certification of authenticity printed on the chart. A list of POD providers can be found at: [nauticalcharts.noaa.gov/pod](http://nauticalcharts.noaa.gov/pod)