

Latitude: N 41.210781
Longitude: W -122.269486

Driving Directions

Highway Post Mile: N/A

Take the Central Dunsmuir exit off I-5, Exit #730. Head south on Dunsmuir Avenue and turn east (left) onto Cedar Street. Go downhill and turn south (right) onto Sacramento Avenue. Continue south on Sacramento Avenue to Bush Street. Access UPRR Dunsmuir Rail Yard from the Bush Street bridge on the east side of the rail tracks.

Railroad Milepost: UPRR 321.90 –
 Black Butte Subdivision

Nearest Address and Thomas Guide #:
 N/A

Cell Service: Yes –Verizon tested

Overview Street Map**Hazards, Restrictions and Advice for Responders**

Be aware of rail traffic throughout the yard. Coordinate with on-site UPRR personnel for traffic controls.

Access the concrete walkway along the river-right shoreline at the north (upstream) end of the concrete retaining wall. Access to a slow water pool below the City of Dunsmuir Public Works building at the south end of the rail yard via a steep rocky trail. Slip, trip, and fall hazards exist, especially during icy or wet conditions. River can be very swift along the retaining wall.

UPRR has two response trailers on-site with hard boom, sorbents, and additional response equipment. UPRR track crossing #748854L is located on the west side of the Bush Street bridge at UPRR milepost 321.90.

Resources-At-Risk

Ecological: western mastiff bat, Bald Eagle, Osprey, Northern Goshawk, Oregon fireweed

Economic: Fishing guide services, UPRR infrastructure, local tourism

Tribal: Contact the Native American Heritage Commission at (916)-373-3710.

Cultural and Historic: Contact the Northeast Information Center at (530) 898-6256.

Site Description and Field Notes

River Width: 14 meters
(45 feet)

Gradient: Medium

Site Location/Segment: SAC-SK-A-055

This is UPRR's main rail yard north of Roseville.

Site Contact/s:

UPRR RMCC
(888) 877-7267

Siskiyou County Public Works Department has an office in one of the buildings south of the response site.

Vehicular Access: All vehicle types can access this location.

Recreational Use: Fishing, rafting/kayaking, water-contact

Boat Launches: Use shoreline for launching rafts or kayaks. There are no boat ramps along the upper Sacramento River between Box Canyon Dam and Lake Shasta (Divisions SAC-SK-A and SAC-SH-A).

ESI Shoreline Type: Exposed rocky banks (1A); Exposed, solid man-made structures (1B); Vegetated, steeply-sloping bluffs (8F); Vegetated low banks (9B)

Site Images



Upstream



Downstream



Straight Across

RR = River-Right RL = River-Left

Photo Date: 09/21/2017

Site Objectives: Deflection boom and product collection.

Implementation: Best boom deployment and product collection area is at the slow water pool and eddy on the river-right shoreline below the City of Dunsmuir Public Works Building at the south end of the rail yard. Collect product inside boom angle and pump up to storage tanks on bank above river.

Staging Area Location and Capabilities/Amenities/Waste Management: Lots of space available for staging and waste management.

Response Strategy Map (overview)

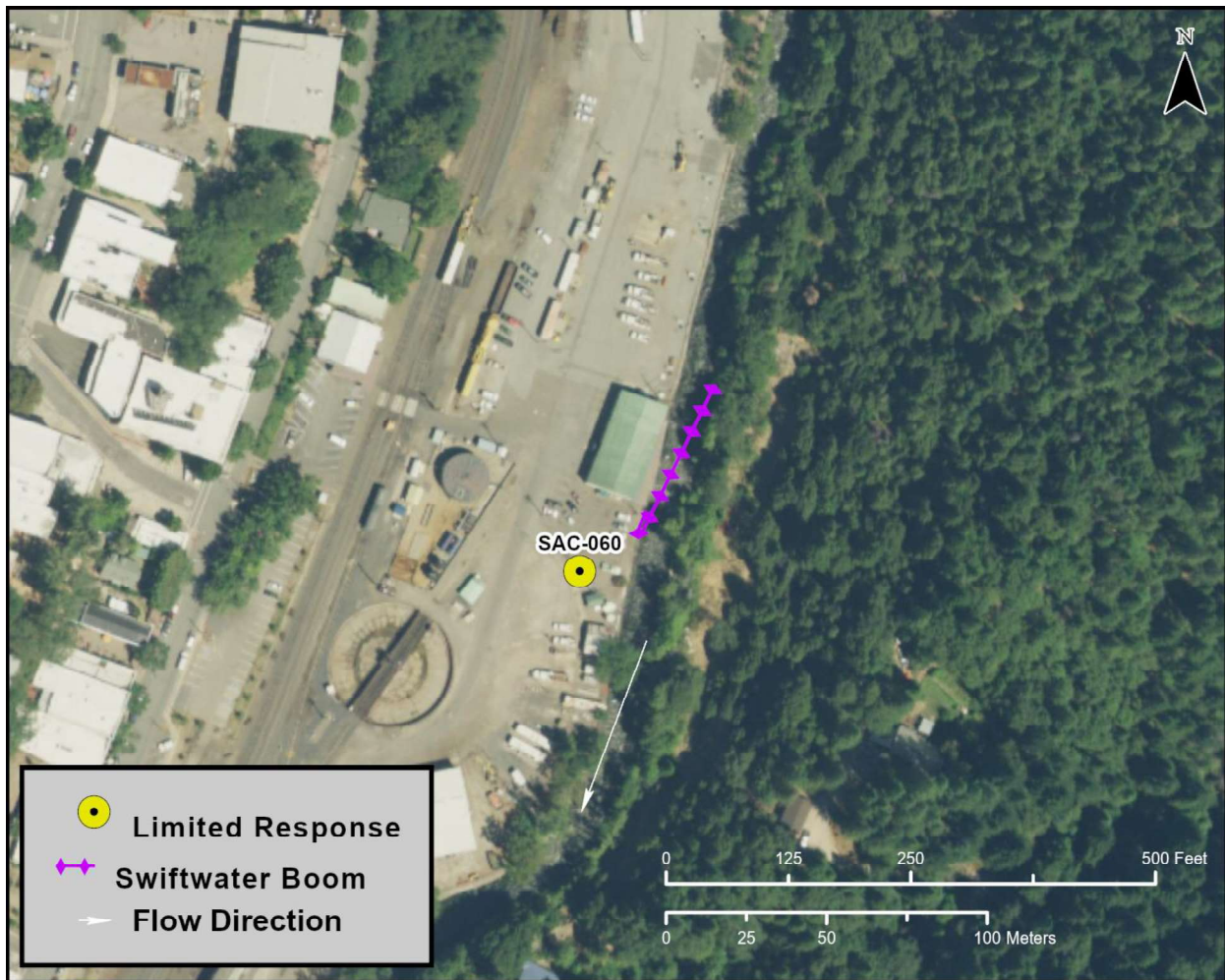


Table of Response Resources

Type	Sub-Type	Size	Unit	QTY - Unit	Special Equipment or Comments
Boom	Sorbent	5 to 8	inch	400 feet	
Boom	Swiftwater	8 to 12	inch	300 feet	Need 600 feet of boom if deploying a secondary boom line.
Skimmer	Disc or Drum			1	
Storage Tank		20,000	gallon	5	
Vacuum Truck		120	bbl	1	
Pads and Sweep	Sorbent		bale	40	
Personnel				6 to 8 crew	