

**Latitude:** N 41.26692  
**Longitude:** W -122.30324

**Driving Directions**

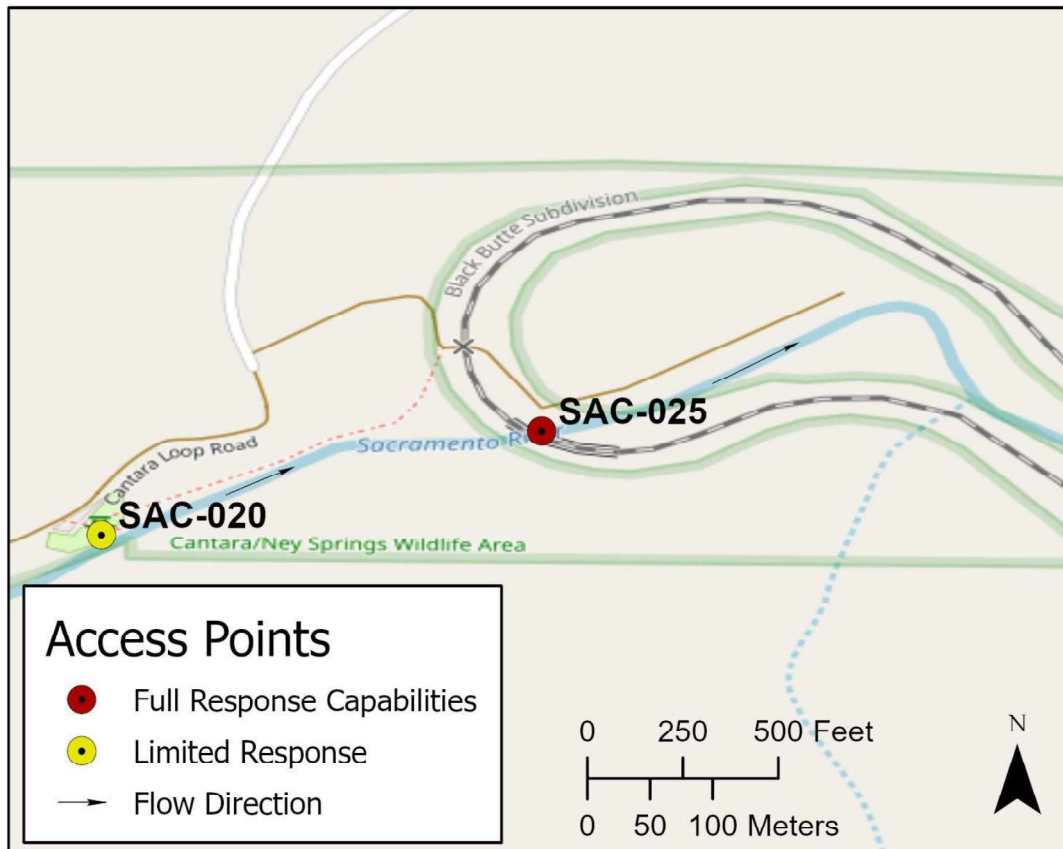
**Highway Post Mile:** N/A

**Railroad Milepost:** UPRR 328 – Black Butte Subdivision

Take Mott Road exit off I-5, Exit #734. Head west to South Old Stage Road. Head north on South Old Stage Road to Cantara Loop Road. Head west on Cantara Loop Road and follow road down to gated unnamed paved access road on the left. This road leads down to the rail crossing and the Cantara Loop bridge.

**Nearest Address and Thomas Guide #:**  
N/A

**Cell Service:** Yes - Verizon tested

**Overview Street Map****Hazards, Restrictions and Advice for Responders**

Response site is located beyond a locked gate. For access and work around UPRR tracks, contact UPRR Response Management Communications Center (RMCC) at (888) 877-7267. UPRR Cantara Road Crossing #411012E is located at bottom of access road.

Best boom deployment location is about 100 to 200 yards downstream of the rail bridge.

The rail bridge is the site of a previous derailment in July 1991 that released 19,000 gallons of the herbicide Metam Sodium into the Sacramento River.

**Resources-At-Risk**

**Ecological:** Osprey, Bald Eagle, Foothill Yellow-legged Frog, Shasta chaenactis

**Economic:** Fishing guide services; UPRR tracks and infrastructure

**Tribal:** Contact the Native American Heritage Commission at (916) 373-3710.

**Cultural and Historic:** Contact the Northeast Information Center at (530) 898-6256.

## Site Description and Field Notes

**River Width:** 27 meters  
(90 feet)

**Gradient:** Low to Medium

**Site Contact/s:**  
UPRR RMCC  
(888) 877-7267

California Department of  
Fish and Wildlife – Region 1  
(530) 225-2300

NORCOM Dispatch  
(916) 358-1310

**Site Location/Segment:** SAC-SK-A-015

Elevation at this site is 2,806 feet above MSL.

**Vehicular Access:** High-clearance vehicle recommended for crossing rail tracks.

**Recreational Use:** Fishing, kayaking/rafting, water-contact.

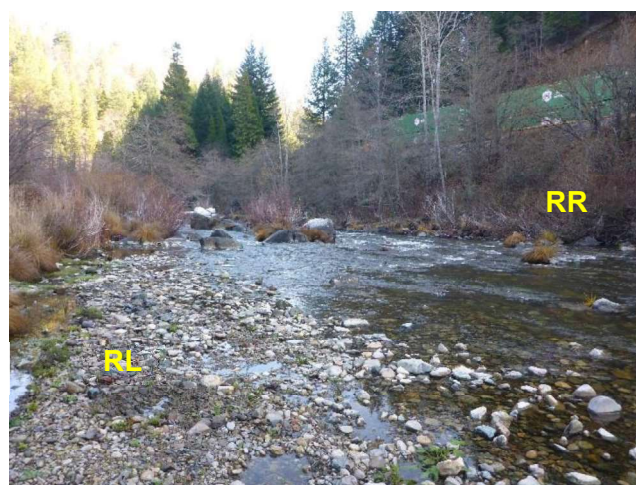
**Boat Launches:** Use shoreline for launching rafts or kayaks. There are no boat ramps along the upper Sacramento River between Box Canyon Dam and Lake Shasta (Divisions SAC-SK-A and SAC-SH-A).

**ESI Shoreline Type:** Exposed, solid man-made structure (1B); gravel bars and gently sloping banks (6A); vegetated low banks (9B)

## Site Images



Upstream



Downstream



Straight Across

RR = River-Right RL = River-Left

Photo Date: 12/09/2017



**Site Objectives:** Deflection boom and product collection.

**Implementation:** Deploy 400 feet of swiftwater boom from upstream on river-right shoreline near rail bridge to downstream eddy along river-left shoreline. Use extra boom to protect shoreline at the collection area. Collect product with skimmer and pump to storage tank up bank.

**Staging Area Location and Capabilities/Amenities/Waste Management:** Good resource staging area in open space above river-left shore on east side of track crossing. Additional nearby staging at Cantara/Ney Springs Wildlife Area – Cantara Fishing Access parking lot at bottom of Cantara Loop Road. Area is capable for vacuum truck access and sufficient for storing large quantities of liquid and/or solid wastes.

### Response Strategy Map (overview)

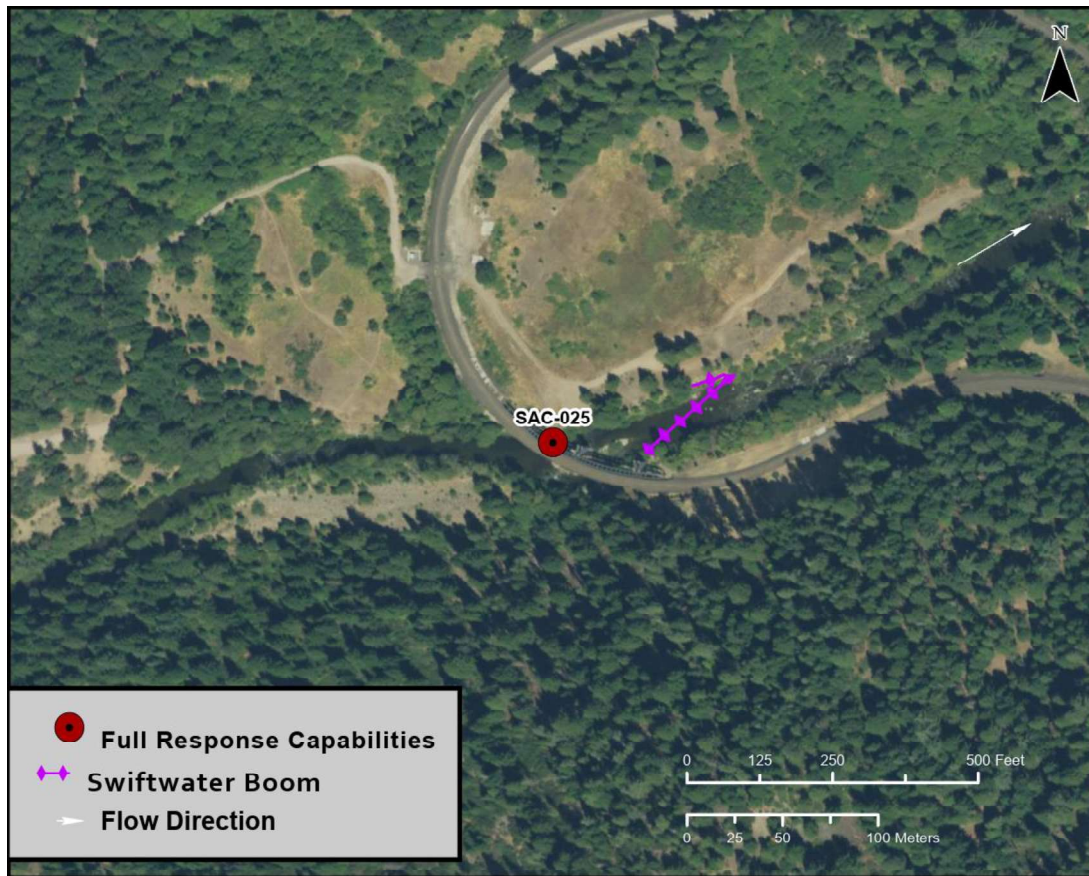


Table of Response Resources

Type	Sub-Type	Size	Unit	QTY - Unit	Special Equipment or Comments
Boom	Sorbent	5 to 8	inch	600 feet	
Boom	Swiftwater	8 to 12	inch	400 feet	
Skimmer	Disc or Drum			1	
Storage Tank		20,000	gallon	5	
Vacuum Truck		70	bbl	1	
Pads and Sweep	Sorbent		bale	40	
Personnel				6 to 8 crew	