

Latitude: 35.38283
Longitude: -119.04022

Driving Directions

Highway Postmile: KER 0.09

From the North: Highway 99 South to Highway 178 East. Drive under freeway and turn left onto Buck Owens Blvd. Make a sharp right turn onto Riverside Drive. Access gate at the end of cul-de-sac and follow the dirt road to the river's edge (river right).

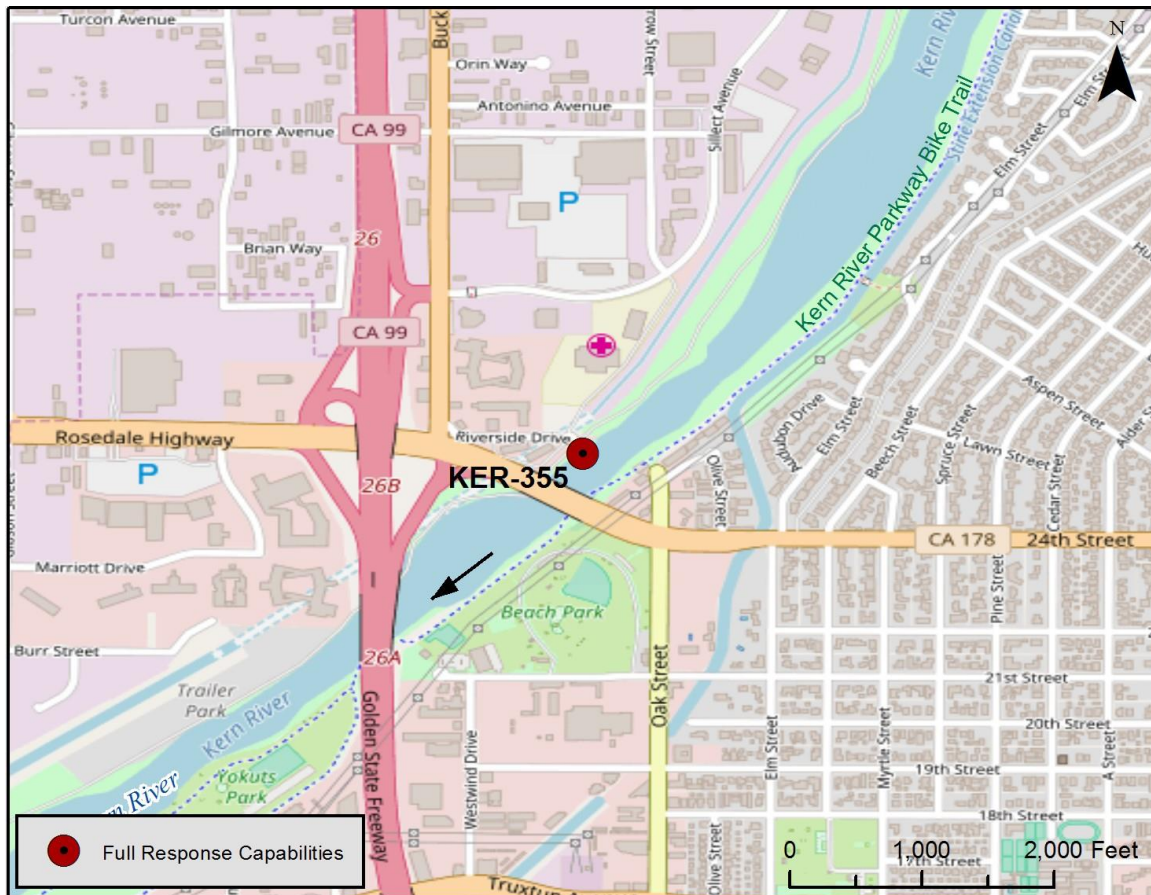
Railroad Milepost: N/A

Nearest Address and Thomas Guide #:
 2609 Buck Owens Blvd
 Bakersfield, CA 93308

From the South: Highway 99 North to Highway 178 East. Drive under freeway and turn left onto Buck Owens Blvd. Make a sharp right turn onto Riverside Drive. Access gate at the end of cul-de-sac and follow the dirt road to the river's edge (river right).

Cell Service: Yes, Verizon

Overview Street Map



Hazards, Restrictions and Advice for Responders

- Swift water during winter and spring flows
- Homeless encampments in the area, biological hazards including rattlesnakes
- Riprap across river
- Highway 178 overpass just south of site
- Union Pacific rail crossing approximately 1 mile upstream from site

Resources-At-Risk

Ecological: Western Pond Turtle, San Joaquin kit fox, Bakersfield Legless Lizard. Riparian habitat supports sensitive plant and animal communities including migratory birds and raptors.

Economic: Multiple parks downstream of site.

Tribal: Contact the Native American Heritage Commission at (916) 373-3710.

Cultural and Historic: Contact the Southern San Joaquin Valley Information Center Information Center at (661) 654-2289.



Site Description and Field Notes

River Width: 76 meters
(249 feet)

Gradient: Low

Site Contact/s:

City of Bakersfield Water
Resources (661) 326-3716

Kern County Sherriff
(661) 861-3110

Site Location/Segment: KER-KN-J-005

This site is located just south of the Starlite Motel. Access to river left is possible by taking Highway 178 East to Oak Street (North) and accessing the bike path at the end of the cul-de-sac. Homeless encampments exist in this location on both sides of the river. Water flow at this location can vary seasonally from high to no flow.

Vehicular Access: Passenger vehicles, small trucks, vacuum trucks, trailers

Recreational Use: human contact

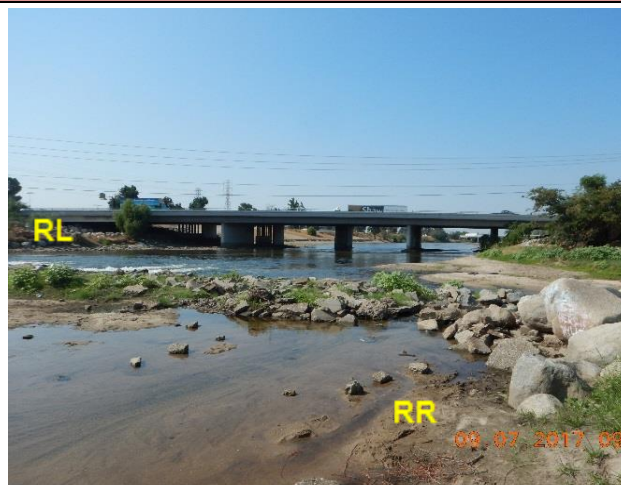
Boat Launches: Direct river access, small skiff only from bank at river right

ESI Shoreline Type: 1B Exposed, solid man-made structures; 4 Sandy bars and gently sloping banks; 5 Mixed sand and gravel bars and gently sloping banks; 6B Riprap; 8F Vegetated, steeply-sloping bluffs; 9B Vegetated low banks

Site Images



Upstream



Downstream



Straight Across

RR = River Right RL = River Left

Photo Date: 09/07/2017

Site Objectives: Boom to prevent further movement of oil and allow for collection of oil

Implementation: Deploy 500 ft. of containment boom upstream at an angle to prevent entrainment, utilizing anchoring stakes. Oil collection will be on river right.

Staging Area Location and Capabilities/Amenities/Waste Management: Staging for boom trucks, trailer, vacuum trucks and temporary storage tanks at cul-de-sac. Room for decontamination. Starlite motel could serve as a command center with restrooms and electricity.

Response Strategy Map (overview)

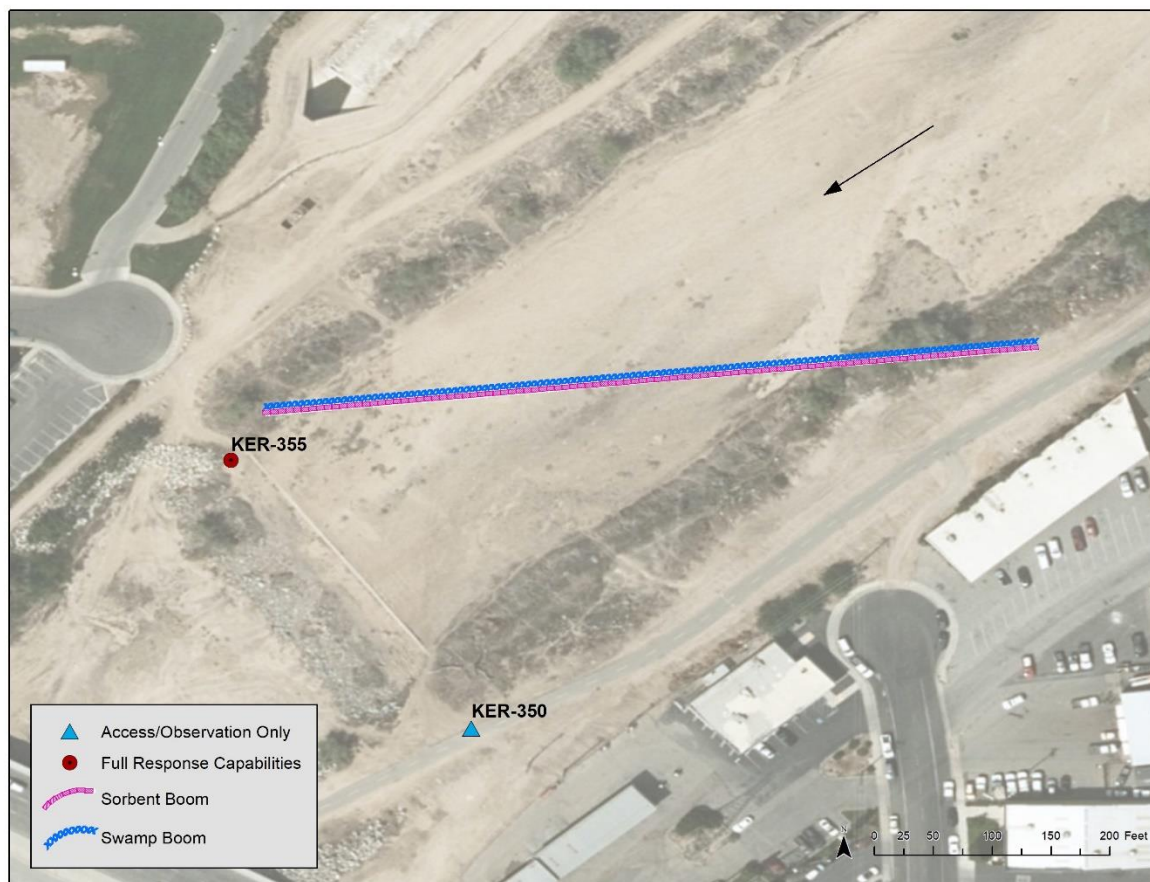


Table of Response Resources

Type	Sub-Type	Size	Unit	QTY - Unit	Special Equipment or Comments
Boom	Swamp	12	Inch	500 ft.	Booming strategy only effective during medium to low flow
Boom	Sorbent	5 or 8	Inch	500 ft.	5 inches for light oiling, 8 inches for heavier oiling
Stakes	Anchoring			6	6 stakes per boom, 3 on either end. Any boom with a "J" in its shape would require an additional stake. Recommend angled iron beams.
Anchors	Danforth	40	lb	2	Midstream anchoring.
Skimmer	Drum				Number will vary depending on response.
Boat	Small Skiff			1	Only necessary if river currents and water levels are optimal for launching a skiff to deploy boom.
Personnel				8	4 boat crew and 4 shoreside personnel.