

6-130-A Site Summary - Aliso Canyon Creek**6-130-A****County:** San Diego**ACP Division/Segment:** SD - B - S005**NOAA Chart:** 18774**Map Book:** 409 L8**Decimal Degrees:** 33.2643 -117.4424**Site Description:**

This site is approximately 100 feet across at the mouth. Aliso Canyon Creek is a small seasonal creek that drains rainwater from the Camp Pendleton hills. The small pond at the creek mouth is situated in low erosion bluffs behind the beach face. During most of the year the creek mouth is closed naturally by a sand berm so that no site protection is necessary. Only after prolonged rainfall will enough water flow in Aliso Canyon Creek to connect it to the oceans tidal influence.

Resources at Risk:

ESI and Habitat: 3A Fine- to medium-grained sand beaches

List of Resources at Risk:

	Resource Name	Status	Presence	Sensitivity
Birds	California least tern	FE, SE	Feb - Sep	
Birds	Western snowy plover	FT, SSC	Year-round	
Fish	tidewater goby	FE, SSC	Variable	

FT-Federally Threatened, FE-Federally Endangered, FP-Federally Protected, SE-State Endangered, ST-State Threatened, SP -State Protected, SR-State Rare, SSC-Species of Special Concern, BGEPA-Bald and Golden Eagle Protection Act, SSSP-State Special Status Species

List of Key Contacts:

Type	Name/Title	Organization	Phone
C	/Coordinator	South Coastal Information Center	(619) 594-5682
E	/Commanding Officer (24hr)	MCB Camp Pendleton Command Center	(760) 725-5061
T	/Resource Management Branch	MCB Camp Pendleton Environmental Security	(760) 725-4637
T	/Spill Prevention & Planning Section	MCB Camp Pendleton Environmental Security	(760) 763-1120
T	/Spill Coordinator (24hr)	US Fish and Wildlife Service, Carlsbad Office	(760) 607-9768

C – Cultural, Historic, Archaeological; E – Entry/Owner/Access; O – Other; S – Safety; T – Trustee; X – Exclusion or Security

Additional Site Summary Comments:

Response efforts at this site will require coordination with the Commanding Officer of Marine Corps Base Camp Pendleton. The base routinely conducts amphibious training and other maritime operations along the beachfront. Early coordination to avoid conflict between responders and military OPS is critical. Gate access and guided travel within Camp Pendleton work sites should be coordinated to help avoid extensive delays clearing the gate security office, and to speed up response time to the remote locations along this relatively undeveloped coastline.

Concerns and Advice to Responders:

Strategically Dynamic: Assess current site conditions before selecting a response strategy or ordering response equipment.

Hazard and Restrictions:

Use caution when responding on USMCB Camp Pendleton beaches.

Site Strategies:

Site Validation Level: II

Strategy: 6-130.1 Objective: Build Berm

Strategy: Close the creek mouth to tidal flow by constructing a sand berm using borrowed sand from the lower beach face. Minimize sand relocation from the upper beach face.

Table of Response Resources

Equipment	Sub-Type	Size	Unit	QTY	Unit	Last Page Update
Heavy Equipment	Backhoe			1		
Staff	Staff to Deploy			1		

Strategy: 6-130.2 Objective: Deploy Sorbent Boom

Strategy: Deploy sorbent boom across the creek mouth to intercept floating oil. Plan to deploy two parallel layers of sorbent material if oil is threatening the wetland.

Table of Response Resources

Equipment	Sub-Type	Size	Unit	QTY	Unit	Last Page Update
Boom	Sorbent Boom			300	feet	
Vessel	Skiff or Punt			1		
Staff	Staff to Deploy			3		

Strategy: 6-130.3 Objective: Erect Filter Fence

Strategy: Construct a filter fence across the creek mouth to prevent oil from entering the wetland on high tide.

Table of Response Resources

Equipment	Sub-Type	Size	Unit	QTY	Unit	Last Page Update
Fence	Filter			300	feet	
Staff	Staff to Deploy			6		

Logistics:

Directions: From I-5 enter Camp Pendleton at the main gate entrance at Oceanside. Take Vandergrift Road to Stuart Mesa Road to the Las Flores Creek road turn-off. The creek mouth is approximately 100 feet across at the mouth.

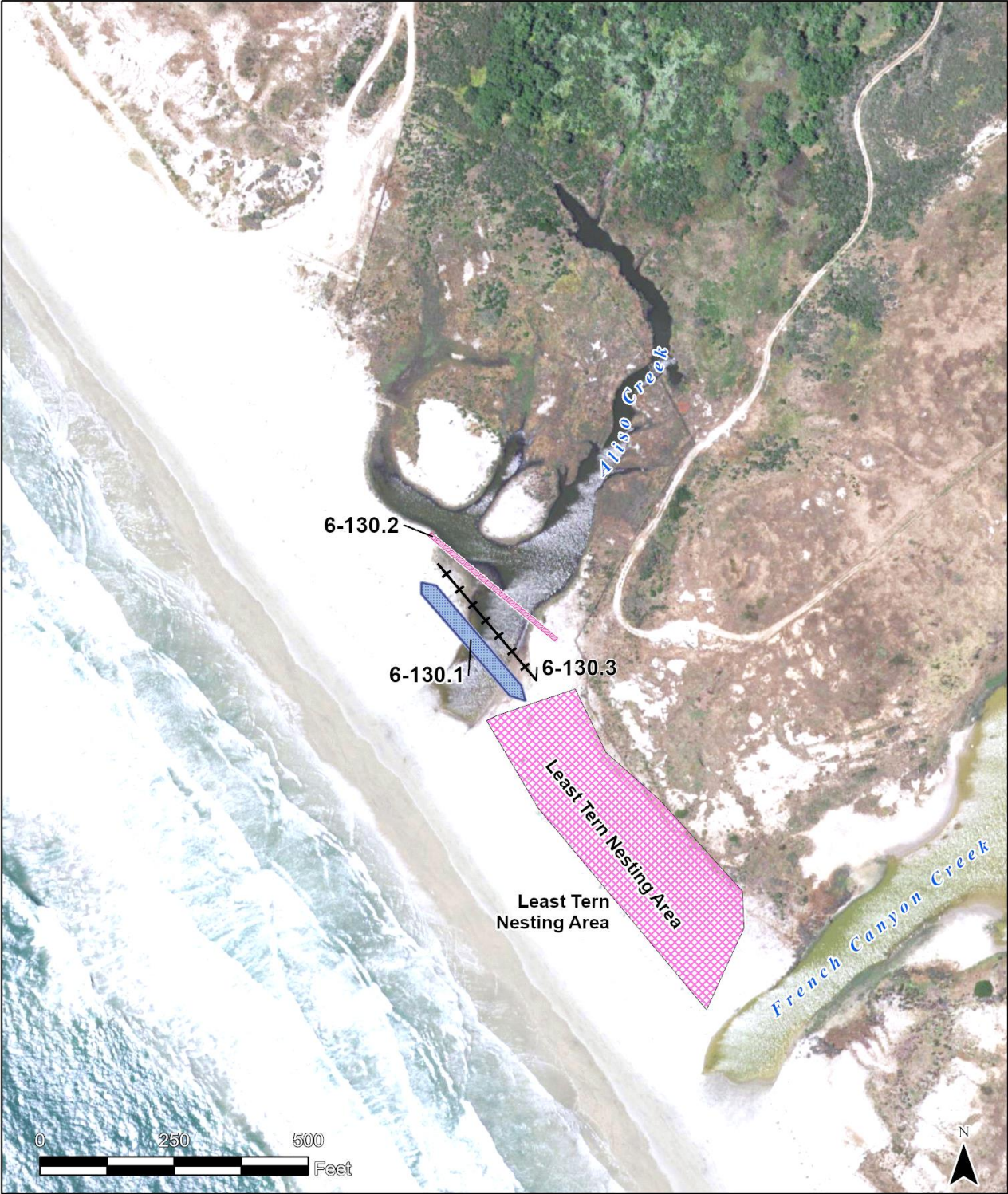
Land Access: All access is available but rainfall may cause limitations. Response vehicles should approach the site using the wet sand edge along the beach face to minimize potential disturbances to beach nesting bird habitat.

On-Water Limitations: Not practical at this site.

Facilities, Staging Areas, Command Posts, Available Equipment: Staging is available near the beach at Aliso Canyon Creek.

Communications Problems: None.

Additional Operational Comments: Fencing in the area is to exclude people from California least tern habitat. Stay out.



CDFW - OSPR & USCG Site: 6-130 Name: Aliso Canyon Creek

A. Caputo (OSPR) & D. Lyons (OSPR) Date: 2/13/2023

- | | |
|--|--|
| +++++ Filter Fence |  Dike or Berm |
|  Sorbent Boom |  Nesting Area |