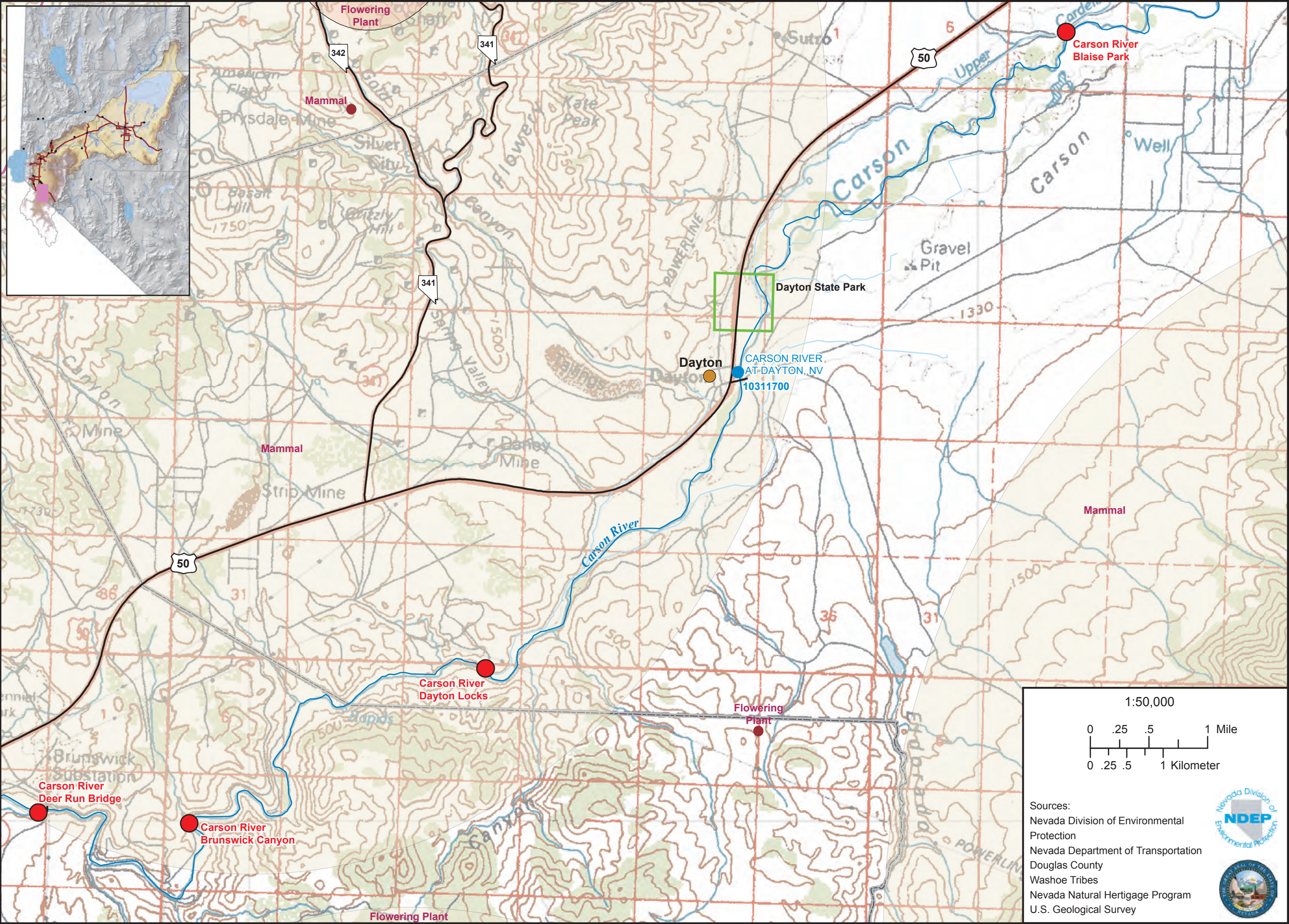


Carson River Emergency Response Map - Detail Map 6



EXPLANATION

Carson River Access Points

- Primary
- Secondary

Sensitive Species—Represents the area in which the true location of observed extents of sensitive species are considered to occur. Type of sensitives species are located in or near the buffer points.

- 100 meter buffer around observed location
- 1600 meter buffer around observed location
- 10,000 meter buiffer around observed locations
- USGS Realtime Site
- Cities-Towns
- County Seat

Streams

- Ditch or Intermittent
- Perennial
- Douglas County Ditch Network
- Railroads
- State Maintained Roads

- Basin Boundary
- State Park Boundaries
- County Boundaries

Waterbodies

- Dry Lake
- Intermittent Waterbody
- Perennial Waterbody

Sources:
Nevada Division of Environmental Protection
Nevada Department of Transportation
Douglas County
Washoe Tribes
Nevada Natural Hertigage Program
U.S. Geological Survey

