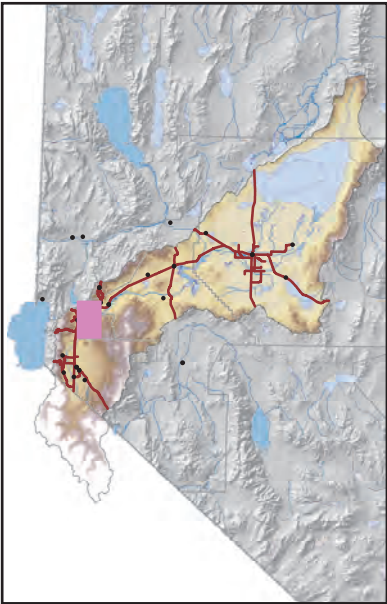
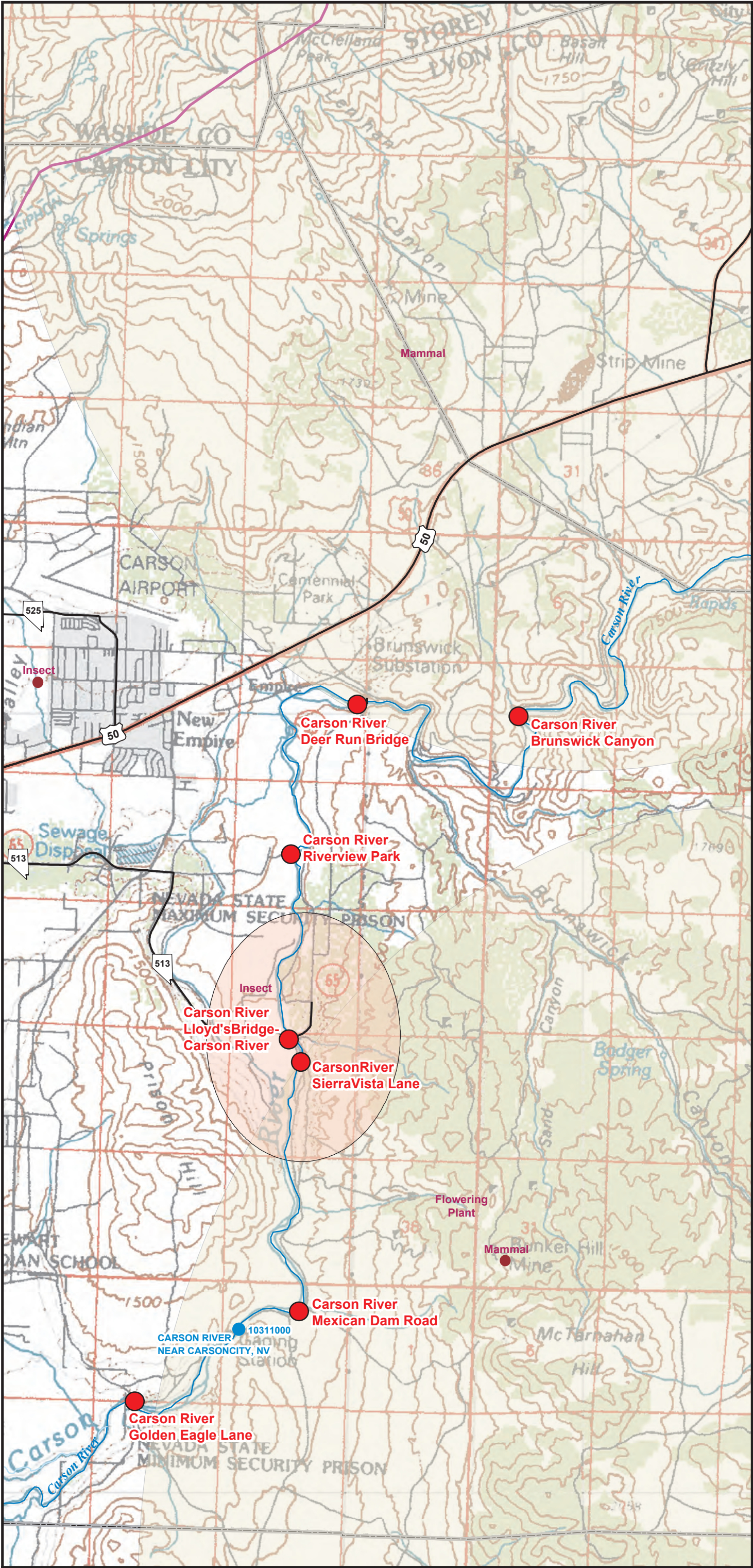


Carson River Emergency Response Map - Detail Map 5



EXPLANATION

Carson River Access Points

- Primary
- Secondary

Sensitive Species-Represents the area in which the true location of observed extents of sensitive species are considered to occur. Type of sensitives species are located in or near the buffer points.

- 100 meter buffer around observed location
- 1600 meter buffer around observed location
- 10,000 meter buiffer around observed locations

- USGS Realtime Site
- Cities-Towns
- County Seat

Streams

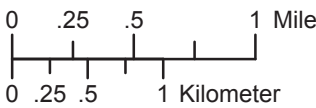
- Ditch or Intermittent
- Perennial
- Douglas County Ditch Network
- Railroads
- State Maintained Roads

- Basin Boundary
- State Park Boundaries
- County Boundaries

Waterbodies

- Dry Lake
- Intermittent Waterbody
- Perennial Waterbody

1:50,000



Sources:
Nevada Division of Environmental Protection
Nevada Department of Transportation
Douglas County
Washoe Tribes
Nevada Natural Hertitage Program
U.S. Geological Survey

