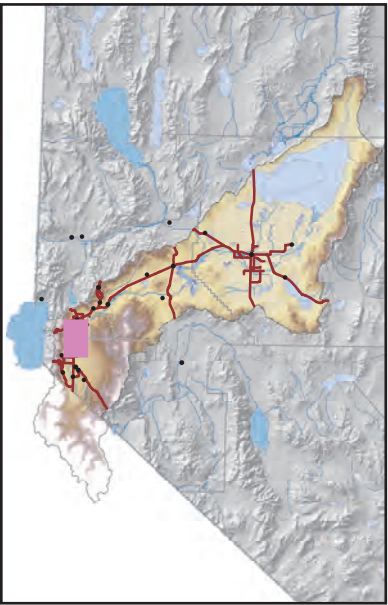
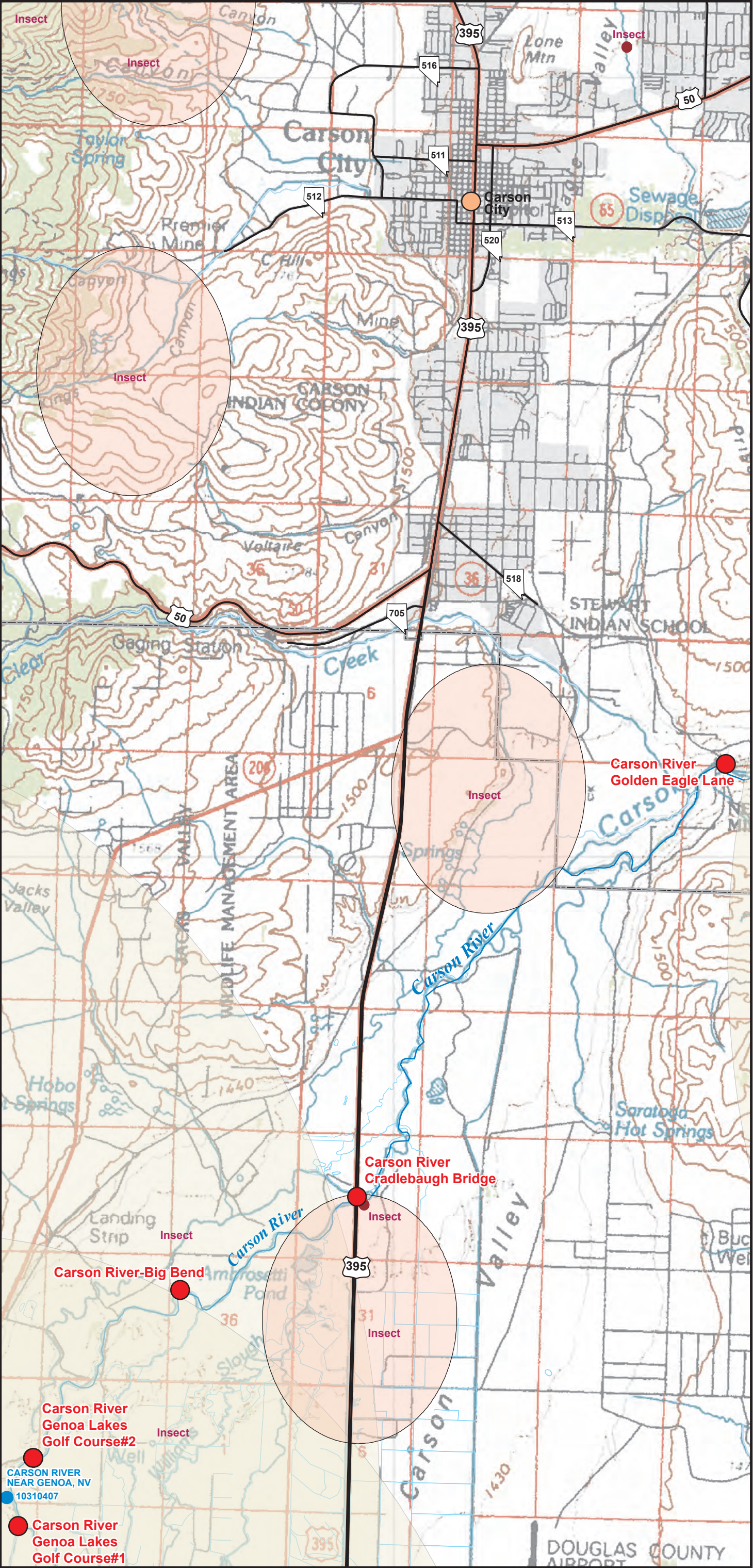


Carson River Emergency Response Map - Detail Map 4



EXPLANATION

Carson River Access Points

- Primary
- Secondary

Sensitive Species-Represents the area in which the true location of observed extents of sensitive species are considered to occur. Type of sensitives species are located in or near the buffer points.

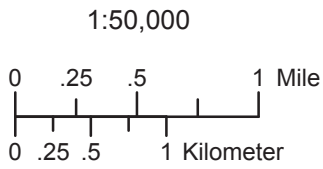
- 100 meter buffer around observed location
- 1600 meter buffer around observed location
- 10,000 meter buiffer around observed locations

Streams

- Ditch or Intermittent
- Perennial
- Douglas County Ditch Network
- Railroads
- State Maintained Roads
- Basin Boundary
- State Park Boundaries
- County Boundaries

Waterbodies

- Dry Lake
- Intermittent Waterbody
- Perennial Waterbody



Sources:

- Nevada Division of Environmental Protection
- Nevada Department of Transportation
- Douglas County
- Washoe Tribes
- Nevada Natural Heritage Program
- U.S. Geological Survey