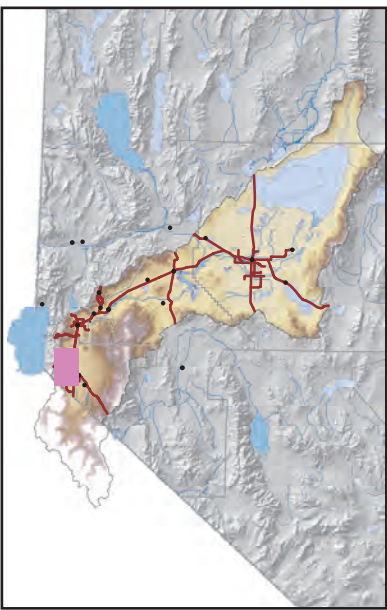
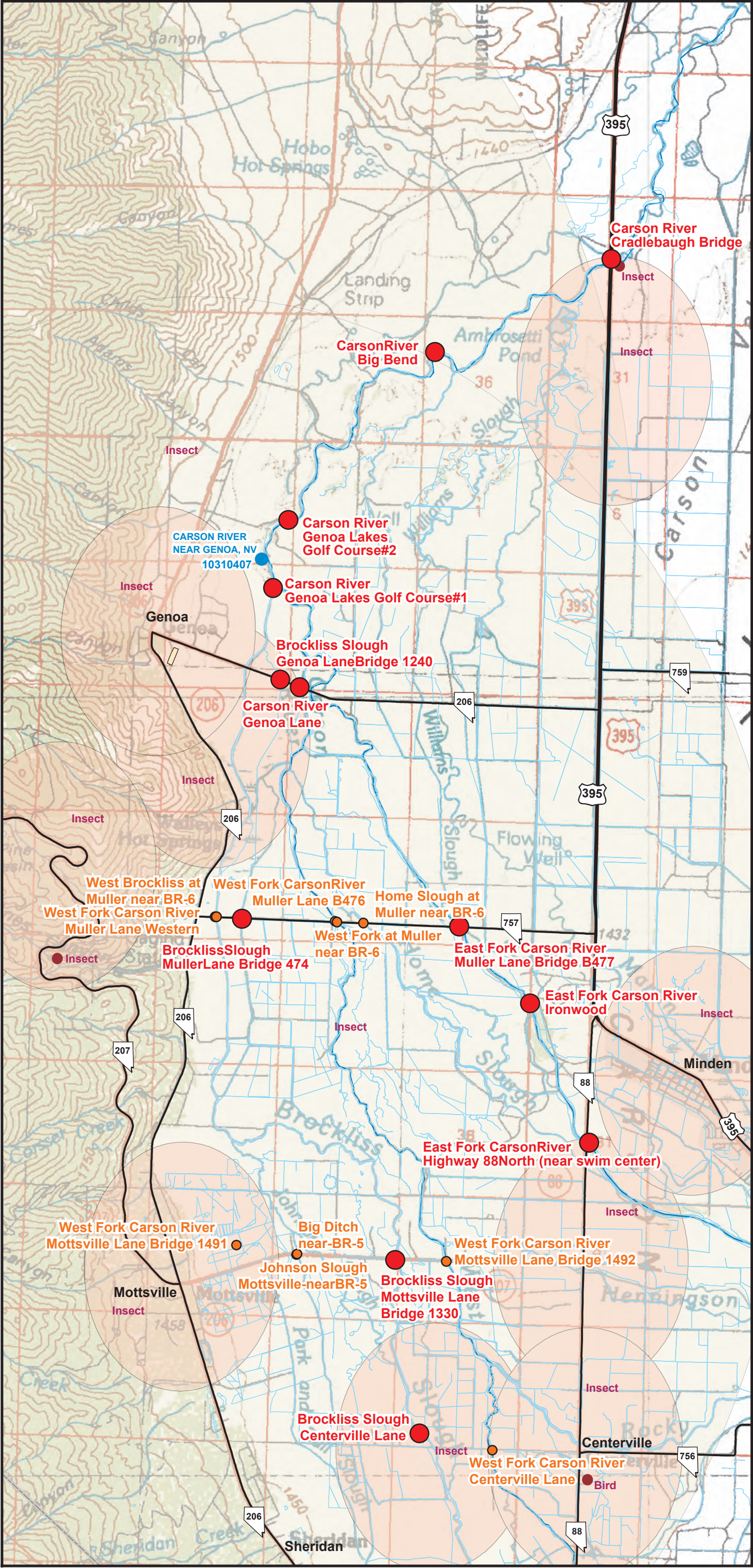


Carson River Emergency Response Map - Detail Map 2



EXPLANATION

Carson River Access Points

- Primary
- Secondary

Sensitive Species-Represents the area in which the true location of observed extents of sensitive species are considered to occur. Type of sensitives species are located in or near the buffer points.

- 100 meter buffer around observed location
- 1600 meter buffer around observed location
- 10,000 meter buiffer around observed locations

- USGS Realtime Site
- Cities-Towns
- County Seat

Streams

- Ditch or Intermittent
- Perennial
- Douglas County Ditch Network
- Railroads
- State Maintained Roads
- Basin Boundary
- State Park Boundaries
- County Boundaries

Waterbodies

- Dry Lake
- Intermittent Waterbody
- Perennial Waterbody

1:50,000

0 .25 .5 1 Mile

0 .25 .5 1 Kilometer

Sources:
 Nevada Division of Environmental Protection
 Nevada Department of Transportation
 Douglas County
 Washoe Tribes
 Nevada Natural Heritage Program
 U.S. Geological Survey