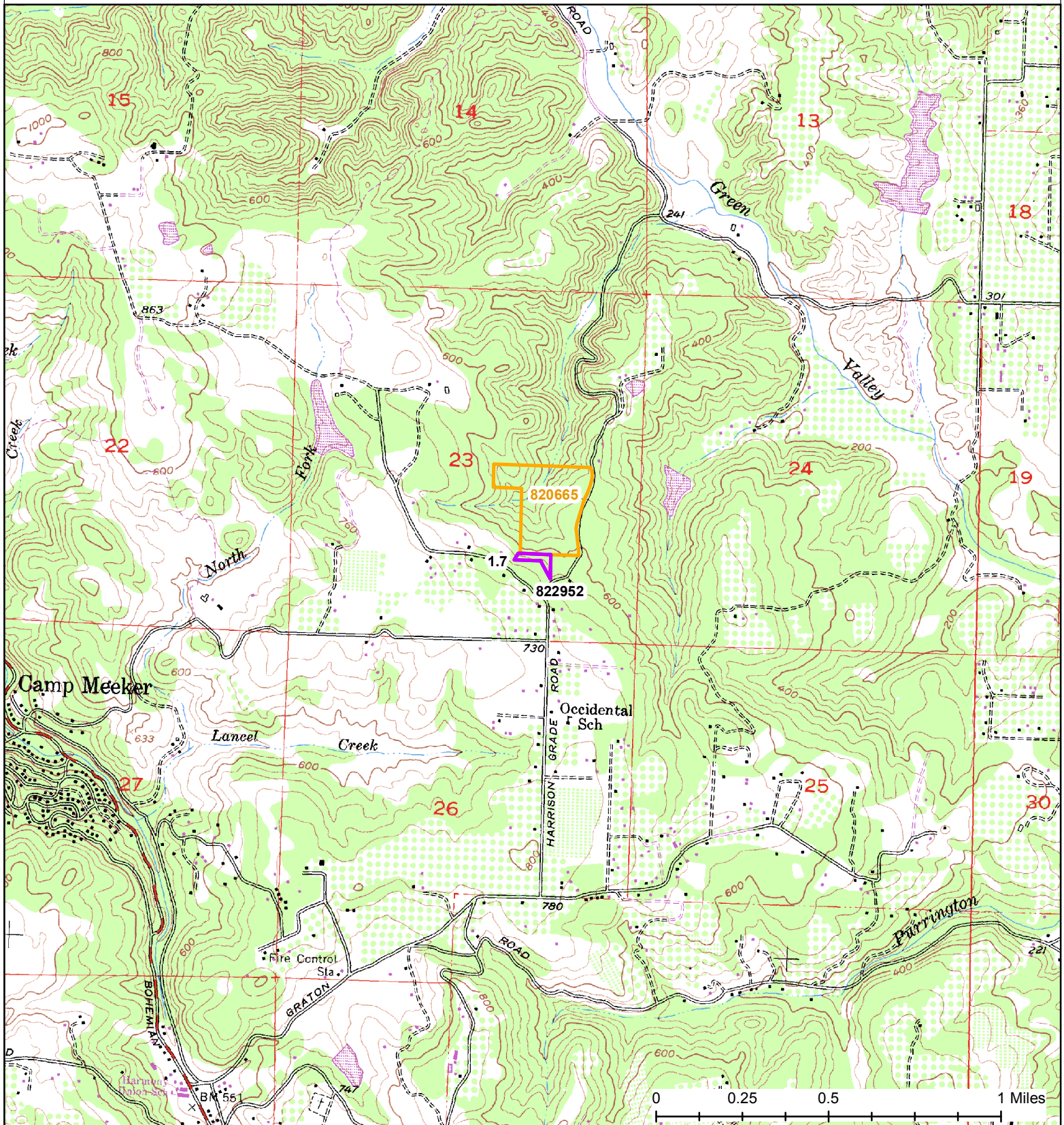


California Department of Fish and Wildlife  
Harrison Grade Ecological Reserve  
Sonoma County



DATA SOURCE  
Assessor Parcel - LandVision  
CDFW Lands, May 2018  
USGS TOPO 1:24,000

- New Boundary Using Assessor Parcel Boundary & Exhibit Maps
- Harrison Grade ER
- Exclusion

**CAMP MEEKER**

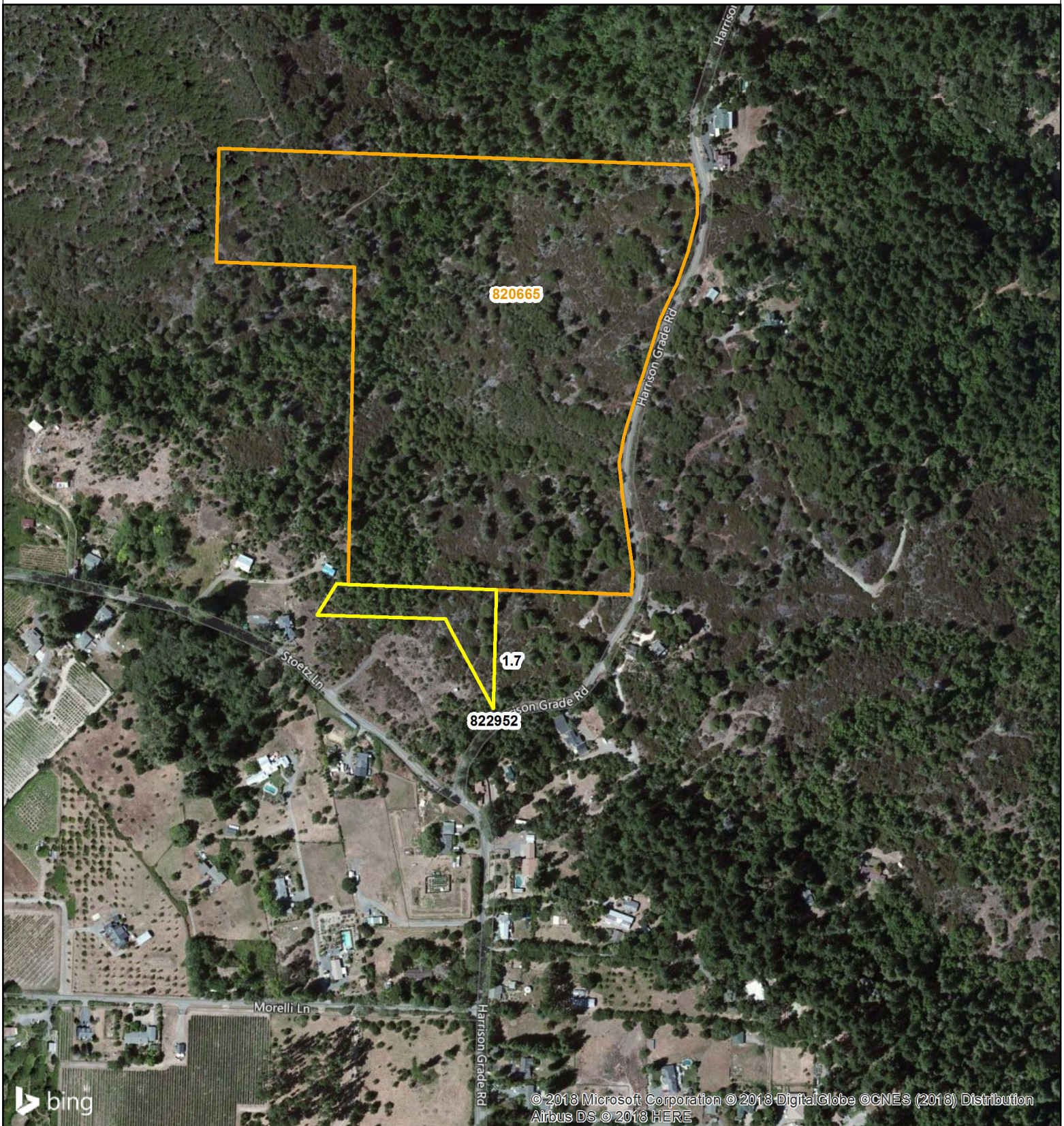
Disclaimer: Boundaries are approximate.  
Maps are intended for general purposes only.

1.70 Calculated GIS Acres

Wildlife Branch, Lands Program  
LO, 5/31/2018



California Department of Fish and Wildlife  
Harrison Grade Ecological Reserve  
Sonoma County



DATA SOURCE  
Assessor Parcel - LandVision  
CDFW Lands, May 2018



New Boundary Using Assessor Parcel Boundary & Exhibit Maps

Harrison Grade ER

1.70 Calculated GIS Acres

0 125 250 500 Feet  
+ + + + +

Disclaimer: Boundaries are approximate.  
Maps are intended for general purposes only.

Wildlife Branch, Lands Program  
LO, 5/31/2018