



**Latitude:** N 40.631877  
**Longitude:** W -122.452114

### Driving Directions

**Highway Post Mile:** N/A

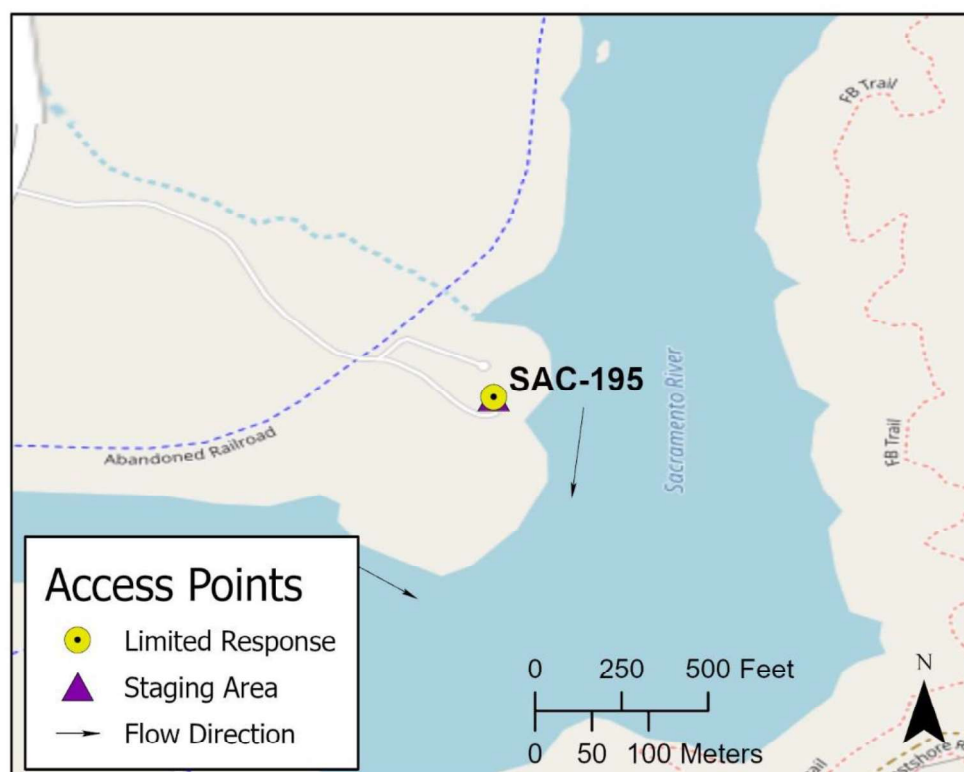
**Railroad Milepost:** N/A

**Nearest Address and Thomas Guide #:**  
N/A

**Cell Service:** Yes – Verizon tested

From I-5, merge onto Highway 44 and head west over the Sacramento River toward downtown Redding. Westbound Highway 44 turns into Shasta Street in downtown Redding. Turn right (north) onto Pine Street and proceed one block and turn left (west) onto Eureka Way. Eureka Way is also Highway 299 West. Head west on Eureka Way/Highway 299 West for 3.9 miles and turn right (north) onto Iron Mountain Road. Head north on Iron Mountain Road for 3.8 miles and turn right (east) at the access road leading to Keswick Boat Launch.

### Overview Street Map



### Hazards, Restrictions and Advice for Responders

The primary risk of hazardous materials spills into Keswick Reservoir is from storage of petroleum at Bureau of Reclamation (BOR) facilities at Shasta Dam. The BOR maintains storage capacity for 58,069 gallons of lube, transformer, and hydraulic oils at the Shasta Dam power plant, 9,620 gallons of mostly hydraulic oils at the dam itself, and 1,000 gallons of gasoline for BOR vehicles.

The only facilities around Keswick Reservoir between Shasta Dam and Keswick Dam are the Chappie-Shasta Off-Highway Vehicle Area and Campground on the river-right shoreline below Shasta Dam, the Keswick Boat Launch, and the Spring Creek Power Plant.

Response strategies for Keswick Reservoir will depend on the product released, the location of the spill, and the volume discharged. Due to the reservoir water access and area available for staging response assets, the area around the Keswick Boat Launch is probably the best location to deploy initial response strategies.

Water levels on Keswick Reservoir can fluctuate rapidly. Responders need to consider water level fluctuation when deploying response strategies. BOR can provide information regarding anticipated water levels.

### Resources-At-Risk

**Ecological:** Bald Eagle, Osprey, Foothill Yellow-legged Frog

**Economic:** Fishing guide services, Keswick Reservoir hydro-electric facilities

**Tribal:** Contact the Native American Heritage Commission at (916) 373-3710.

**Cultural and Historic:** Contact the Northeast Information Center at (530) 898-6256.



## Site Description and Field Notes

**River Width:** 238 meters  
(780) feet at boat launch  
facility

**Gradient:** Low

**Site Contact/s:**  
Bureau of Land  
Management  
(530) 224-2100 M-F 8 to 5

U. S. Bureau of Reclamation  
(530) 247-8588  
(530) 247-8537

SHASCOM (Emergency)  
(530) 245-6540

**Site Location/Segment:** SAC-SH-C-005

The Bureau of Land Management (BLM) maintains a paved bike trail that runs along the river-right shoreline from Keswick Boat Launch north to Shasta Dam.

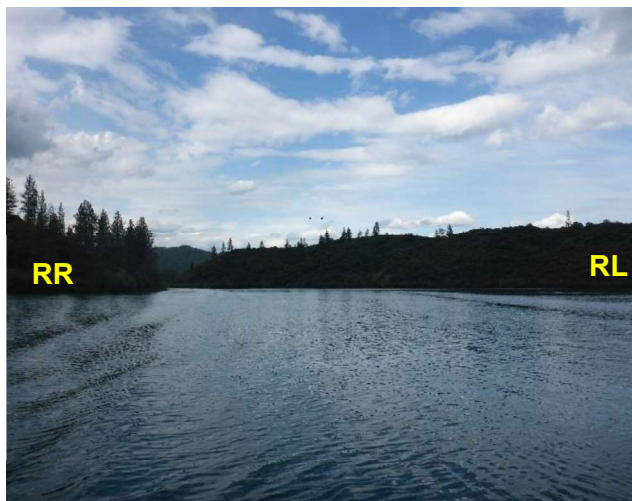
**Vehicular Access:** All vehicle types can access Keswick Boat Launch. The bike trail running along the river-right shoreline has locked gates preventing vehicle access. However, BLM can provide access to the bike trail for passenger vehicles or ATVs.

**Recreational Use:** Fishing, boating

**Boat Launches:** Use Keswick Boat Launch. The Bureau of Reclamation has an additional private boat launch facility below Shasta Dam on the river-left shoreline that may be useful to responders.

**ESI Shoreline Type:** Exposed rocky banks (1A); Vegetated, steeply sloping bluffs (8F); Vegetated low banks (9B)

## Site Images



Upstream



Downstream



Straight Across

RR = River-Right RL = River-Left

Photo Date: 04/18/2018

**Site Objectives:** Deflection boom to shoreline at boat launch for product collection and/or on-water product collection. A secondary strategy is booming across the Spring Creek Inlet of the reservoir to prevent impacts to Spring Creek Power Plant.

**Implementation:** Deploy approximately 1,400 feet of containment boom from the river-left shoreline to small eddy at the boat launch dock. Collect product with skimmer. For secondary strategy, deploy approximately 500 feet of containment boom across the mouth of Spring Creek Inlet. If collecting floating product on water, an additional 700 feet of containment boom is necessary.

**Staging Area Location and Capabilities/Amenities/Waste Management:** Stage response assets and manage wastes at the Keswick Boat Launch parking lot.

### Response Strategy Map (overview)

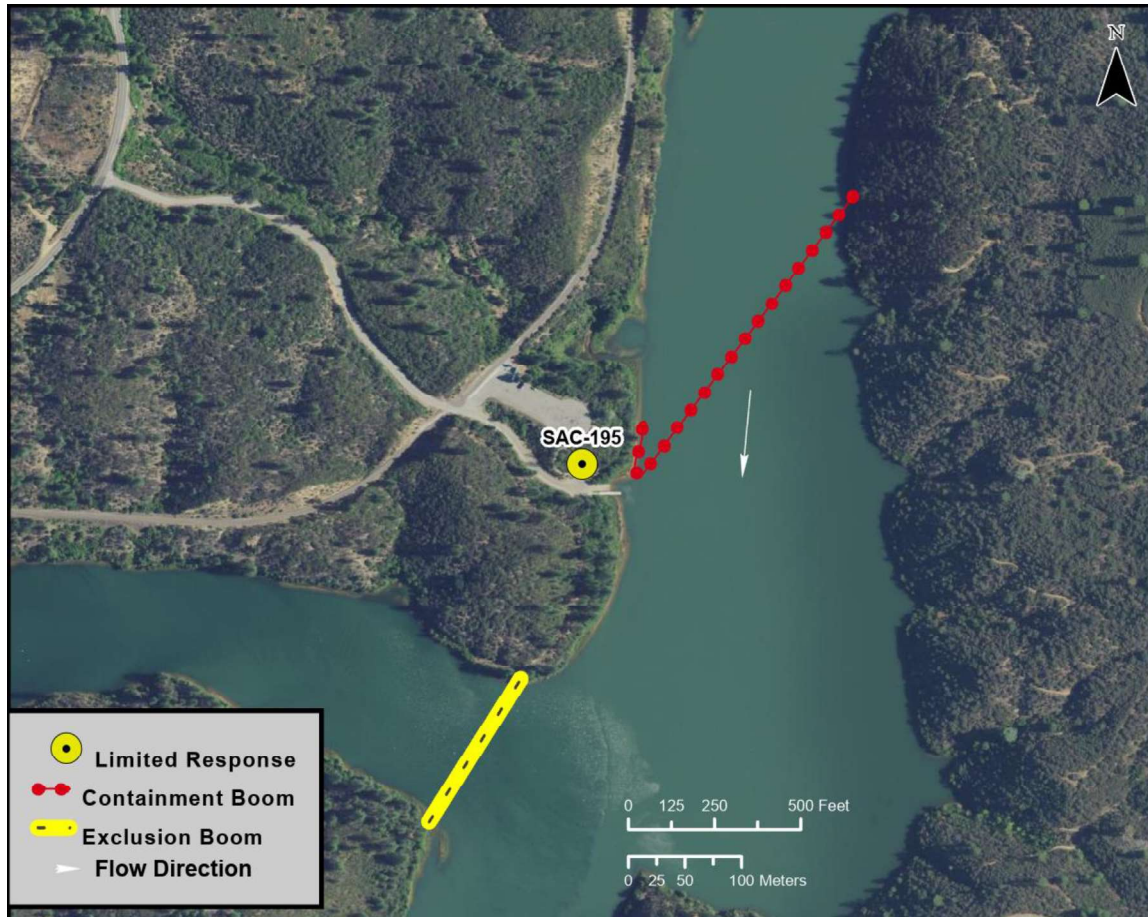


Table of Response Resources

Type	Sub-Type	Size	Unit	QTY - Unit	Special Equipment or Comments
Boom	Containment	21-inch minimum	inch	1,900 feet	Minimum length necessary to set deflection boom at boat launch and protection boom at Spring Creek Inlet. Additional boom necessary for on-water product collection.
Barge	Shallow-Water Barge Set			1	For on-water collection. Include Disc, Drum, or Weir skimmer.
Response Vessel	Response Vessel and Boom Vessel			2	1 each, for on-water collection.
Skimmer	Class 1 Marco and Weir			1	
Storage Tank		20,000	gallon	5	
Vacuum Truck		70	bbl	1	
Personnel				8 to 12 crew	3 vessel operators and 3 deck hands, minimum.