



Latitude: N 40.718685
Longitude: W -122.418765

Driving Directions

Highway Post Mile: N/A

Railroad Milepost: N/A

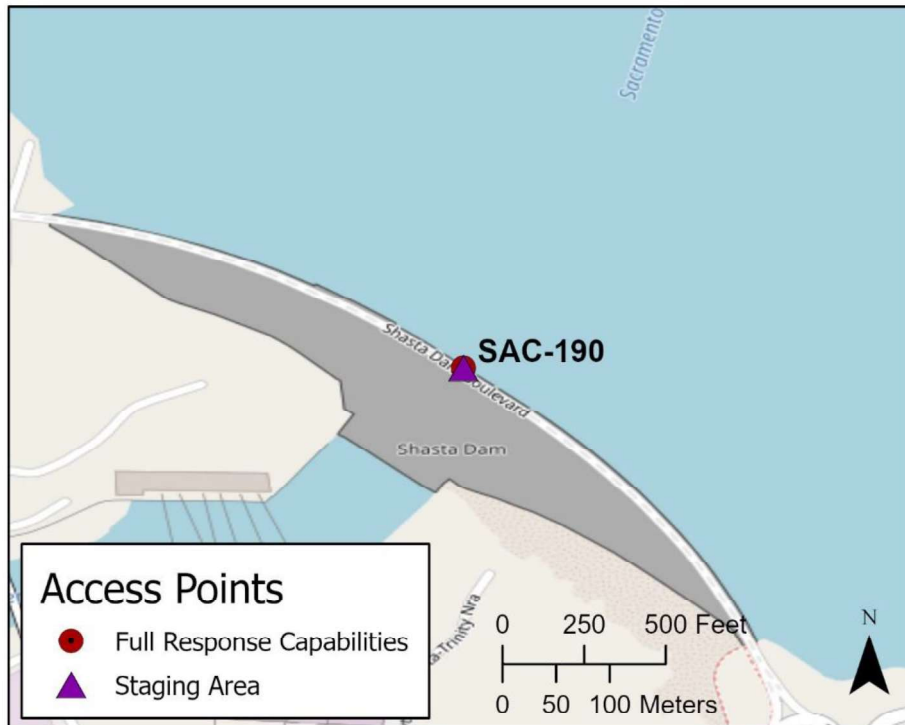
Nearest Address: 16349 Shasta Dam Blvd., Shasta Lake, CA 96019

Cell Service: Yes – Verizon tested

Take the Shasta Dam Boulevard (SR 151) exit, Exit #685, off I-5. Head west on Shasta Dam Boulevard for approximately 7.1 miles until you reach the Shasta Dam offices. For on water operations, launch vessels from Centimudi Boat Launch.

FOR CENTIMUDI BOAT LAUNCH: Head west on Shasta Dam Boulevard until reaching Lake Boulevard at the 4-way stop sign. Head north on Lake Boulevard for 1.5 miles and turn NE onto Kennett Road. Follow road down to boat ramp and parking lot.

Overview Street Map



Hazards, Restrictions and Advice for Responders

ANY RESPONSE OPERATION IN THE VICINITY OF SHASTA DAM REQUIRES NOTIFICATION AND COORDINATION WITH THE U.S. BUREAU OF RECLAMATION (BOR). See site contact info on page 2 of this response strategy form.

The BOR maintains storage capacity for petroleum products at various locations in and around Shasta Dam. The power plant has a maximum storage capacity of 58,069 gallons of lube, transformer, and hydraulic oils, the dam itself has 9,620 gallons of mostly hydraulic oil, and there is 1,000 gallons of gasoline stored on-site.

The BOR uses an I-beam attached to the upstream side of Shasta Dam that runs vertically from top to bottom of the dam to anchor buoy lines. The western anchor is located 728 feet from the west shore and the eastern anchor is located 1,080 feet from the east shore. These lines and anchors may be useful for response personnel. This allows for deployment of boom in various configurations depending on the location of a spill, the product that was released, and current site conditions such as wind and wave action.

The BOR maintains response equipment assets including boats, boat operators, hard boom, generators, forklifts, cranes, and bucket loaders that may be useful in a large response. The BOR has trained personnel available to utilize the response assets listed above.

The Livingston Stone National Fish Hatchery is located at the downstream base of Shasta Dam. The hatchery draws water at depth through the dam infrastructure. Contact hatchery staff at (530) 275-0549 for any release.

Resources-At-Risk

Ecological: Bald Eagle, Osprey, Foothill Yellow-legged Frog, Shasta huckleberry, Livingston Stone National Fish Hatchery (below Shasta Dam)

Economic: Shasta Dam infrastructure, hydro-electric power generation, fishing guide services

Tribal: Contact the Native American Heritage Commission at (916) 373-3710.

Cultural and Historic: Contact the Northeast Information Center at (530) 898-6256.



Site Description and Field Notes

Dam Length: 1055 meters
(3,460 feet)

Gradient: Low

Site Contact/s:

U. S. Bureau of Reclamation
Business Hours:
(530) 275-1554
After Hours:
(530) 247-8588
(530) 247-8537

Livingston Stone National
Fish Hatchery
(530) 275-0549

Site Location/Segment: SAC-SH-B-040

THERE IS A PUBLIC DRINKING WATER INTAKE IN THE VICINITY OF THIS RESPONSE SITE. Immediately contact the City of Shasta Lake at (530) 275-7488 during business hours for additional information and response strategies. For after hours, contact (530) 227-0022.

Shasta Dam is 602 feet high standing 522.5 feet above the Sacramento River. The dam is 3,460 feet long. Shasta Lake extends 15.3 miles up the Sacramento River. This location is the southern end of Division SAC-SH-B.

Vehicular Access: All vehicle types can access this location.

Recreational Use: Boating, fishing, water-contact

Boat Launches: The nearest boat launch is the USFS Centimudi Boat Launch located on the NE side of the dam. Driving directions to Centimudi Boat Launch are found on page 1 of this response strategy form.

ESI Shoreline Type: Exposed rocky banks (1A); Exposed solid man-made structures (1B); Riprap (6B).

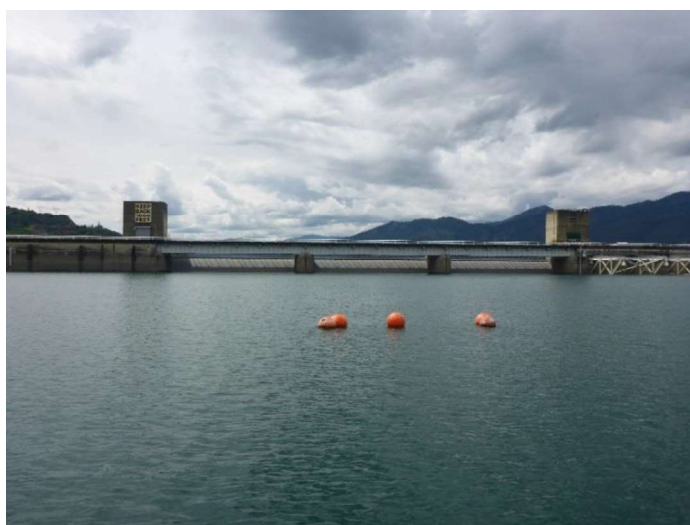
Site Images



View East



View West



Response Site

RR = River-Right RL = River-Left

Photo Date: 04/18/2018



Site Objectives: Deflection, protection, and containment boom strategies with shoreline and/or on-water product collection.

Implementation: Various boom configurations can be deployed using existing I-beam anchors attached to the upstream side of Shasta Dam. Existing buoy lines maintained by the BOR may be useful for the initial boom deployment location(s). Depending on spill location, boom may be used to deflect floating product toward either shoreline for easier product collection. Protection boom strategies may be used to isolate the dam's water intakes. Additional boom can be used to corral floating product for on-water collection.

Staging Area Location and Capabilities/Amenities/Waste Management: Stage equipment and manage wastes at the Shasta Dam office parking lot or at Centimudi Boat Launch.

Response Strategy Map (overview)



Table of Response Resources

Type	Sub-Type	Size	Unit	QTY - Unit	Special Equipment or Comments
Boom	Containment	21-inch minimum	inch	4,000 feet	Minimum length necessary to set protection boom across entire north side of dam face.
Barge	Shallow-Water Barge Set			1	Include Disc, Drum, or Weir skimmer.
Response Vessel	Response and Boom Vessel			2	1 each, minimum.
Skimmer	Class 1 Marco and Weir			1	
Storage Tank		20,000	gallon	5	
Vacuum Truck		120	bbl	1	
Personnel				8 to 12 crew	3 vessel operators and 3 deck hands, minimum.