



Latitude: N 40.756318
Longitude: W -122.324448

Driving Directions

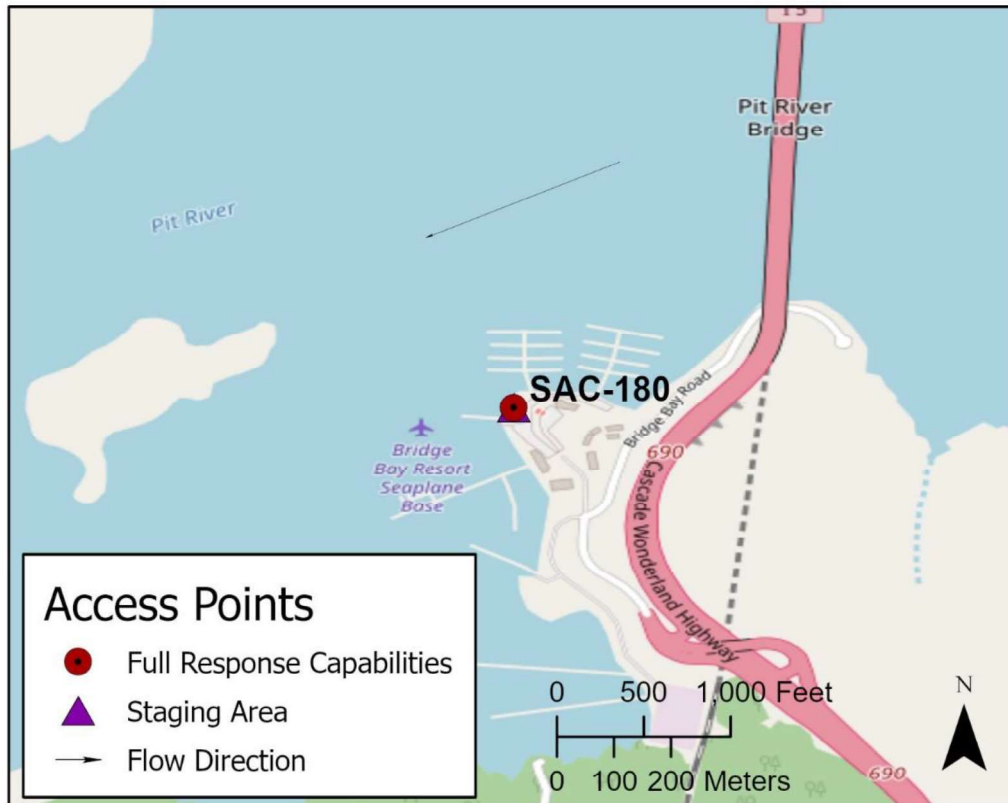
Highway Post Mile: N/A

Take the Bridge Bay Road exit off I-5, Exit #690. On the west side of I-5, follow Bridge Bay Road down to the Bridge Bay at Shasta Lake Marina.

Railroad Milepost: UPRR 273.00 - Valley Subdivision

Nearest Address: 10300 Bridge Bay Road, Redding, CA 96003

Cell Service: Yes – Verizon tested

Overview Street Map**Hazards, Restrictions and Advice for Responders**

Use appropriate on-water safety procedures.

Bridge Bay at Shasta Lake is the largest marina on Lake Shasta. In addition to various vessel types available for renting, these facilities have lodging, a restaurant, store supplies, and public restrooms.

Contact Bridge Bay at Shasta Lake at (800) 752-9669. For after hours, contact General Manager Shane Spinner at (530) 515-7689 or Marina Manager Kris Gordon at (530) 355-1992.

Bridge Bay at Shasta Lake stores 15,000 gallons of gasoline in a double-walled aboveground storage tank located at the south end of the marina parking lot. Fuel pipes run downhill from this location to the fuel docks on the water.

Resources-At-Risk

Ecological: fisher – West Coast DPS, Bald Eagle, Osprey, Western Pond Turtle, Foothill Yellow-legged Frog, Shasta Salamander, northern clarkia, Shasta snow-wreath

Economic: Bridge Bay at Shasta Lake Marina, fishing guide services, local tourism.

Tribal: Contact the Native American Heritage Commission at (916) 373-3710.

Cultural and Historic: Contact the Northeast Information Center at (530) 898-6256.



Site Description and Field Notes

River Width: 823 meters (2,700 feet) (at full lake) from point under south end of I-5/UPRR bridge to Beaver Island

Gradient: Low

Site Contact/s:
USDA Forest Service
Shasta-Trinity National Forest

24-Hour Dispatch
(530) 226-2400
(530) 226-2499

Site Location/Segment: SAC-SH-B-030

THERE IS A PUBLIC DRINKING WATER INTAKE IN THE VICINITY OF THIS RESPONSE SITE. Immediately contact the Mountain Gate Community Services District at (530) 275-3002 during business hours for additional information and response strategies. For after hours, contact (530) 275-4506.

Vehicular Access: All vehicle types can access this location.

Recreational Use: Boating, fishing, water contact.

Boat Launches: There is a public boat launch ramp on the north side of the marina offices and store.

ESI Shoreline Type: Exposed rocky banks (1A); Exposed solid man-made structures (1B); Exposed eroding banks (3B); Riprap (6B); Vegetated steeply sloping bluffs (8F).

Site Images



Upstream



Downstream



Straight Across/Response Site

RR = River-Right RL = River-Left

Photo Date: 04/18/2018



Site Objectives: Deflection, protection, and containment boom strategies with on-water product collection.

Implementation: To keep product out of the marina area, deploy 2,700 feet (at full lake level) of containment boom along the existing buoy line on the north side of the docks between the point under the south end of the I-5/UPRR bridge out to Beaver Island. From Beaver Island, set 1,000 feet of containment boom to deflect product into the main channel. When lake elevation drops, significantly less boom is necessary to protect this area. If the spill source is from the marina fuel station, contain product in immediate area using 850 feet of containment boom between docks and shoreline.

Staging Area Location and Capabilities/Amenities/Waste Management: Stage equipment and manage wastes at the Bridge Bay at Shasta Lake parking area. Work with marina manager to establish staging area.

Response Strategy Map (overview)

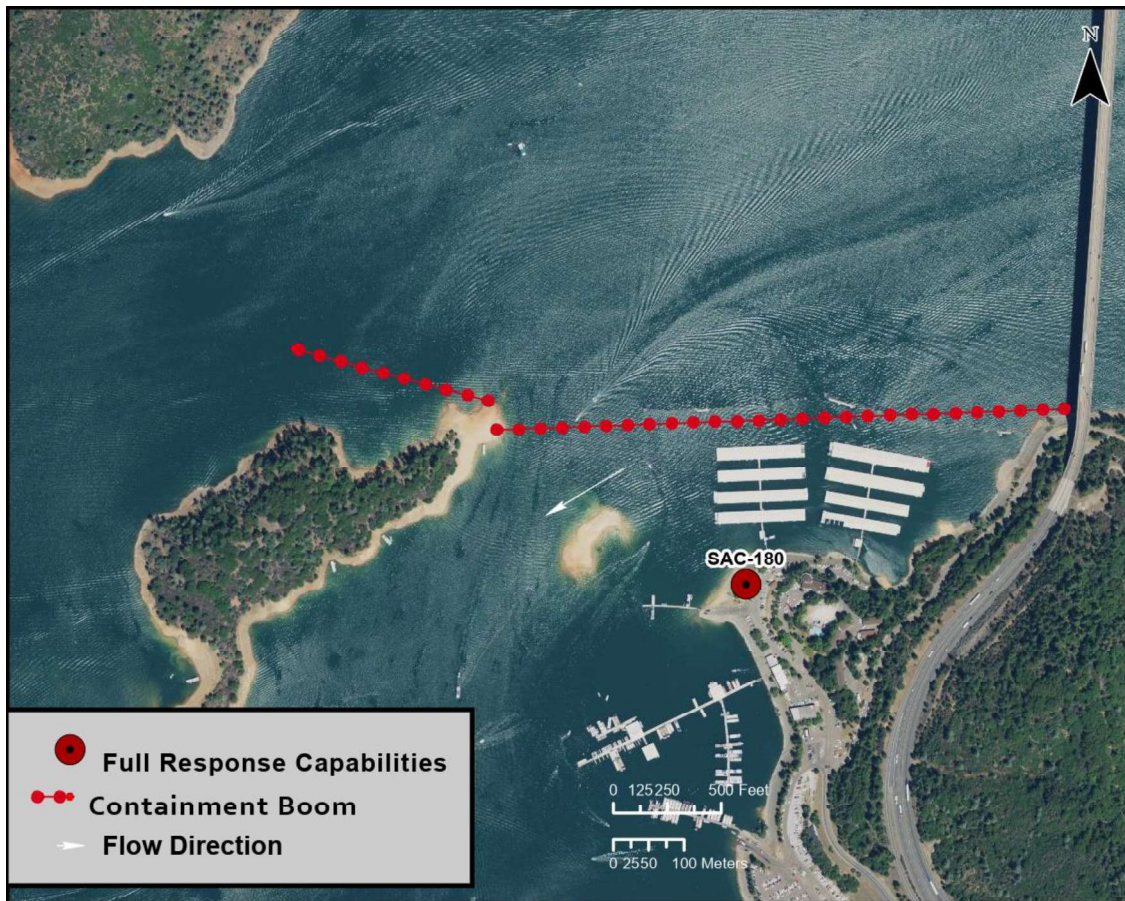


Table of Response Resources

Type	Sub-Type	Size	Unit	QTY - Unit	Special Equipment or Comments
Boom	Containment	21-inch minimum	inch	3,700 feet	Minimum length necessary to boom across north buoy line and deflect away from Beaver Island when lake is full.
Barge	Shallow-Water Barge Set			1	Include Disc, Drum, or Weir skimmer
Response Vessel	Response and Boom Vessel			2	1 each, minimum
Skimmer	Class 1 Marco and Weir			1	
Storage Tank		20,000	gallon	5	
Vacuum Truck		120	bbl	1	
Personnel				8 to 12 crew	3 vessel operators and 3 deck hands, minimum