



**Latitude:** N 40.76412  
**Longitude:** W -122.341185

**Driving Directions**

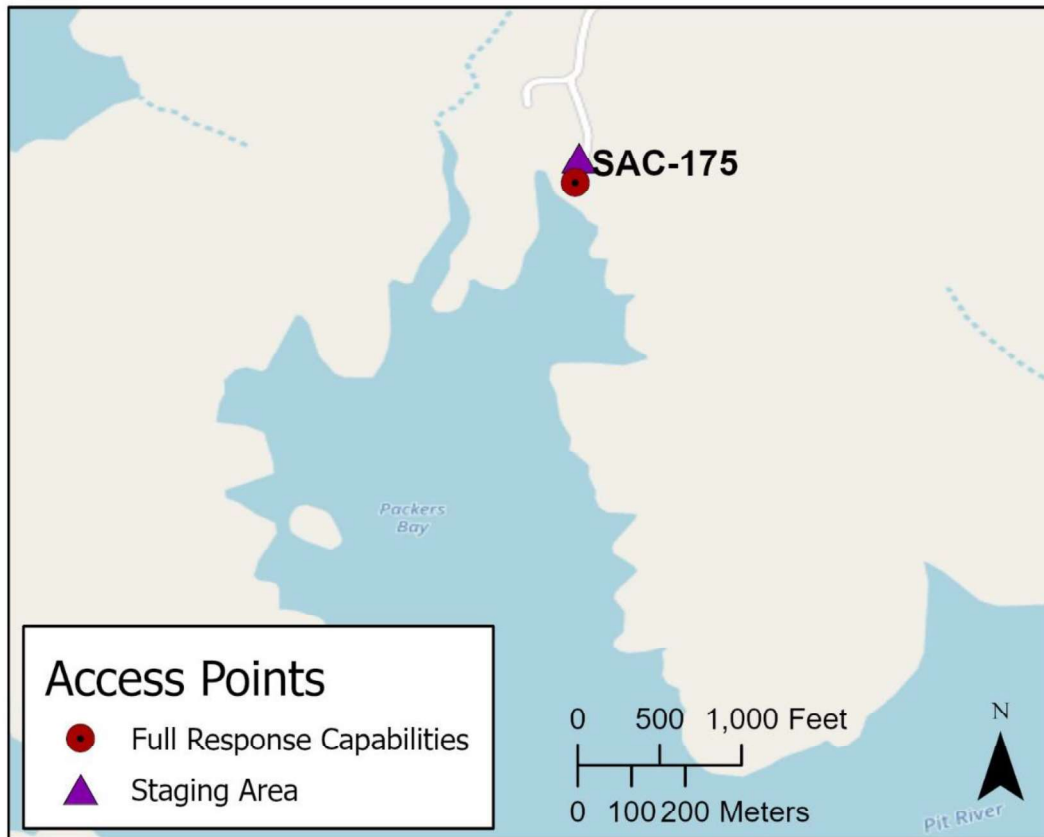
**Highway Post Mile:** N/A

Take the Packers Bay Road exit, Exit #693, off of SB I-5. If heading north on I-5, take the Shasta Caverns Road exit, Exit #695 and head west over I-5. Get back on SB I-5 and proceed to the Packers Bay Road exit. Head west on Packers Bay Road to the Packers Bay Public Boat launch and Shasta Marina at Packers Bay.

**Railroad Milepost:** N/A

**Nearest Address:** 16814 Packers Bay Road, Lakehead, CA 96051

**Cell Service:** Spotty – Verizon tested

**Overview Street Map****Hazards, Restrictions and Advice for Responders**

Use appropriate on-water safety procedures.

The main hazardous materials spill risk at this location is from fuel stored on barges at the Shasta Marina at Packers Bay. They have two 3,000-gallon gasoline double-walled aboveground tanks on barges for fueling their houseboats. They also have a 1,271-gallon diesel aboveground storage tank on a barge for operating the marina's generators.

Additional site contact for this location is Shasta Marina at Packers Bay, (530) 238-2284. After-hours contact numbers are available for this marina. Contact information is available from the CDFW OSPR environmental scientist in Redding.

**Resources-At-Risk**

**Ecological:** Bald Eagle, Osprey, Western Pond Turtle, Shasta Salamander

**Economic:** Shasta Marina at Packers Bay, fishing guide services, local tourism.

**Tribal:** Contact the Native American Heritage Commission at (916) 373-3710.

**Cultural and Historic:** Contact the Northeast Information Center at (530) 898-6256.



## Site Description and Field Notes

**River Width:** 488 meters  
(1,600 feet) across the inlet  
south of the marina docks.

**Gradient:** Low

**Site Contact/s:**  
USDA Forest Service  
Shasta-Trinity National  
Forest

24-Hour Dispatch  
(530) 226-2400  
(530) 226-2499

**Site Location/Segment:** SAC-SH-B-030

There is a large well-maintained public boat launch at this location. Public restrooms are located in the parking lot.

**Vehicular Access:** All vehicle types can access this location.

**Recreational Use:** Boating, fishing, water-contact.

**Boat Launches:** Use the Packers Bay Public Boat Launch at this location.

**ESI Shoreline Type:** Exposed rocky banks (1A); Exposed solid man-made structures (1B); Exposed eroding banks (3B); Vegetated steeply sloping bluffs (8F).

## Site Images



Upstream



Downstream



Straight Across

RR = River-Right RL = River-Left

Photo Date: 04/18/2018



**Site Objectives:** Contain floating product inside Packers Bay Inlet as close as possible to the marina docks. Prevent product from entering main body of Lake Shasta. For significant spills, collect product on-water. For lesser spills, recover product with sorbents and let dissipate naturally.

**Implementation:** At full lake elevation, deploy 1,600 feet of containment boom across the inlet. Shorter boom lengths can be used at lower lake elevations. It may be possible to use the existing marina buoy line for Shasta Marina at Packer Bay's docks.

**Staging Area Location and Capabilities/Amenities/Waste Management:** Stage equipment and manage wastes at the parking lot above Packers Bay Public Boat Launch.

### Response Strategy Map (overview)

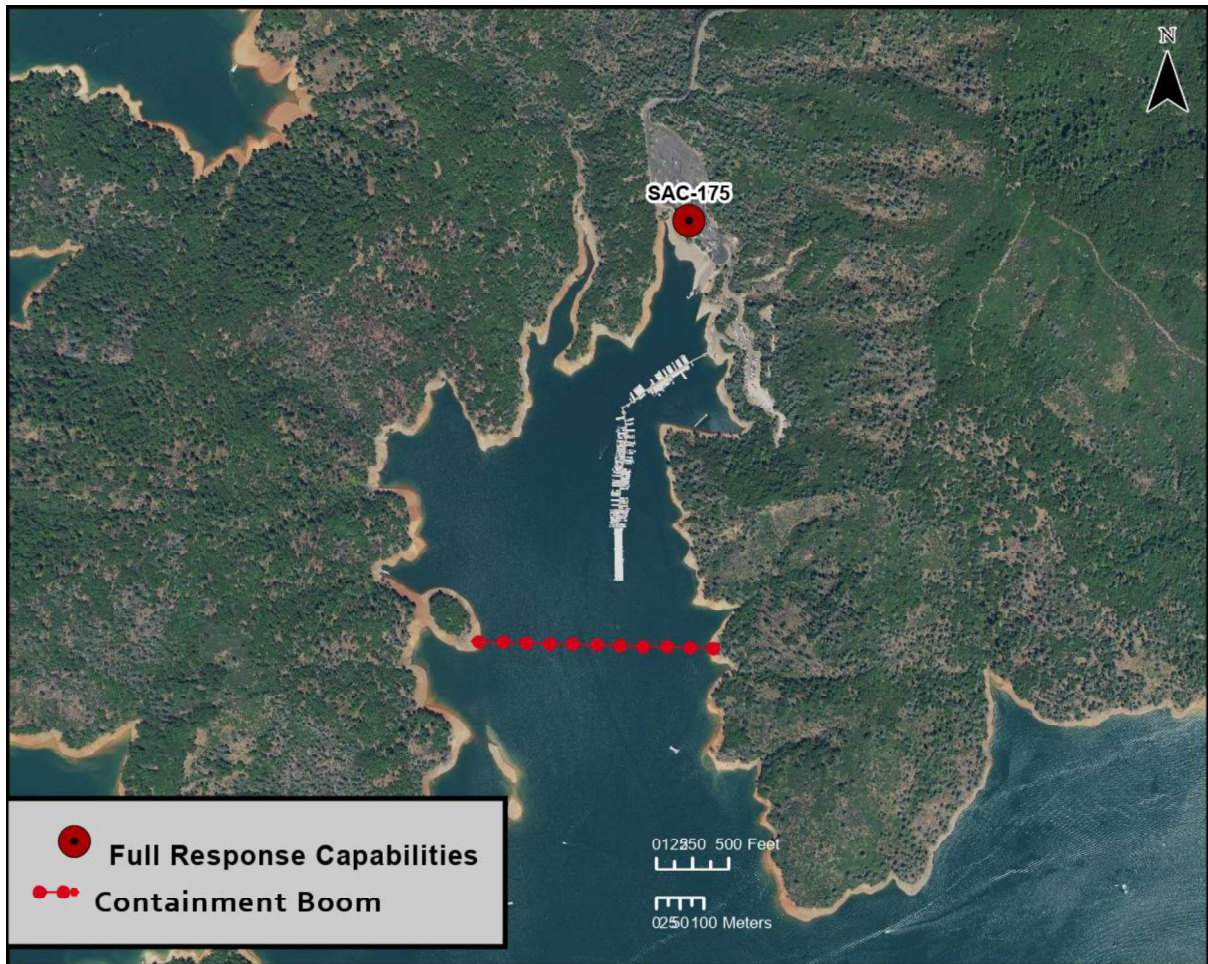


Table of Response Resources

Type	Sub-Type	Size	Unit	QTY - Unit	Special Equipment or Comments
Boom	Containment	21-inch minimum	inch	2,400 feet	Amount of boom necessary to stretch across the inlet at full lake elevation and additional boom for on-water collection.
Barge	Shallow-Water Barge			1	Included Disc, Drum, or Weir skimmer.
Response Vessel	Response and Boom Vessel			2	1 each, minimum.
Skimmer	Class 1 Marco and Weir			1	
Storage Tank		20,000	gallon	5	
Vacuum Truck		120	bbl	1	
Personnel				8 to 12 crew	3 vessel operators and 3 deck hands, minimum.