

Latitude: N 40.823597
Longitude: W -122.340081

Driving Directions

Highway Post Mile: N/A

This is a boat-in only on-water response site. Launch vessels from Packers Bay Public Boat Launch.

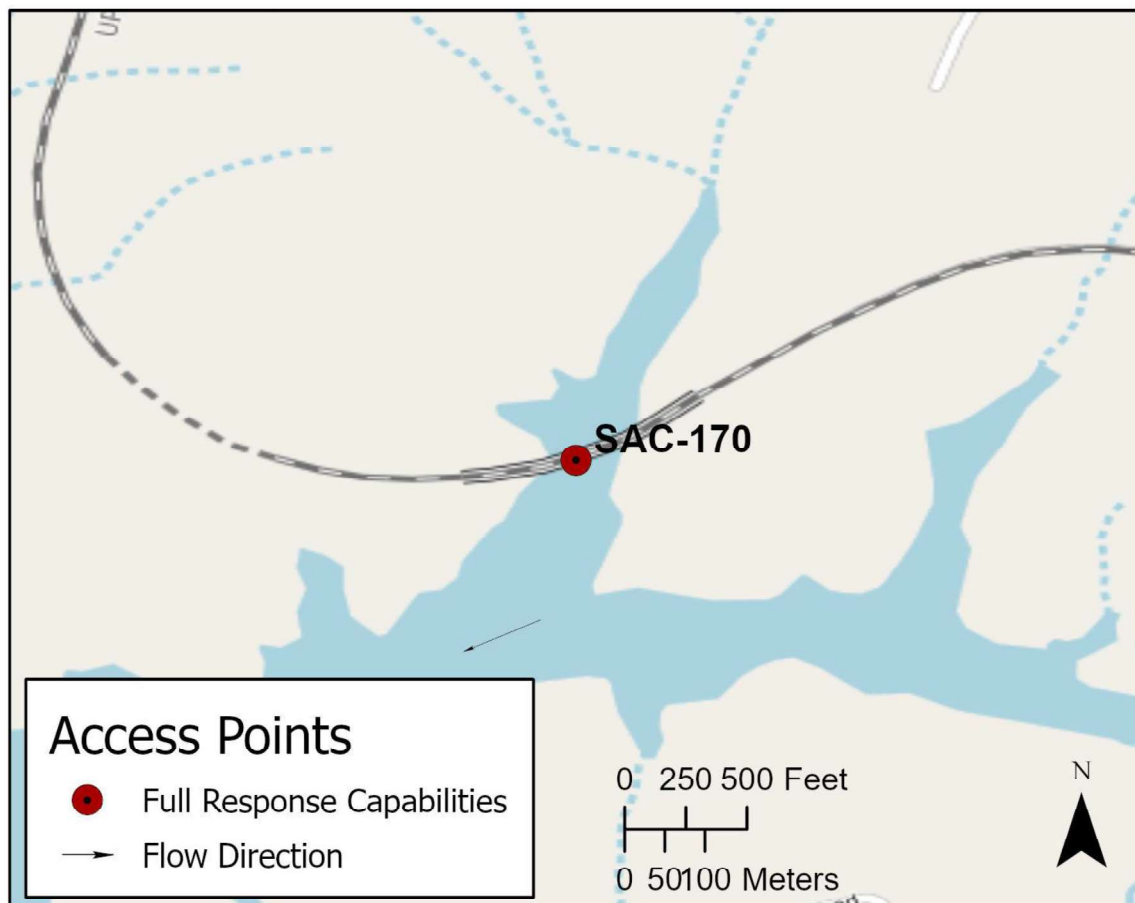
Railroad Milepost: UPRR 278.47 – Valley Subdivision

Take the Packers Bay Road exit, Exit #693, off of SB I-5. If heading north on I-5, take the Shasta Caverns Road exit, Exit #695 and head west over I-5. Get back on SB I-5 and proceed to the Packers Bay Road exit. Head west on Packers Bay Road to the Packers Bay Public Boat launch and Shasta Marina at Packers Bay.

Nearest Address and Thomas Guide #: N/A

Cell Service: Spotty – Verizon tested

After launching vessel, head west toward the Sacramento River Arm of Lake Shasta and then north to the O'Brien Inlet. Travel east in the inlet until reaching the UPRR bridge. The rail bridge is located approximately 8.15 miles from Packers Bay Public Boat Launch.

Overview Street Map**Hazards, Restrictions and Advice for Responders**

Use appropriate on-water safety procedures.

As the lake elevation drops over the course of the summer, the small cove beneath the UPRR bridge will dry up.

Load all response equipment (boom, skimmer, storage, etc.) onto vessels for transport to the response site.

Resources-At-Risk

Ecological: Bald Eagle, Osprey, Western Pond Turtle

Economic: Fishing guide services

Tribal: Contact the Native American Heritage Commission at (916) 373-3710.

Cultural and Historic: Contact the Northeast Information Center at (530) 898-6256.

Site Description and Field Notes

River Width: 210 meters (690 feet) at small cove near rail bridge

Gradient: Low

Site Contact/s:
USDA Forest Service
Shasta-Trinity National Forest

24-Hour Dispatch
(530) 226-2400
(530) 226-2499

UPRR RMCC
(888) 877-7267

Site Location/Segment: SAC-SH-B-025

Vehicular Access: There is no vehicle access to this site. Boat-in access only.

Recreational Use: Boating, fishing, water-contact.

Boat Launches: Launch vessels at the Packers Bay Public Boat Launch or at Bridge Bay Marina. Driving directions to Packers Bay Public Boat Launch are listed on page 1 of this response strategy.

ESI Shoreline Type: Exposed rocky banks (1A); Exposed eroding banks (3B); Vegetated steeply sloping bluffs (8F).

Site Images



East Point



West Point



RR = River-Right RL = River-Left

Response Site

Photo Date: 04/18/2018

Site Objectives: Containment and on-water product collection.

Implementation: Set 700 feet of containment boom between the east and west shoreline at the mouth of the cove on the south side of the UPRR bridge to contain floating product in the cove. The length of boom necessary for containment will depend on the lake elevation and whether product has moved downstream of the bridge. If product has moved downstream, attempt to set the boom in a location that will assist with on-water product collection and keep product out of the main body of Lake Shasta. Above the containment boom, use vessels towing additional boom to corral floating product. Recover product with skimmer and off-load to storage tanks on a support barge. Transport full storage tanks back to Packers Bay Public Boat Launch for off-loading to a vacuum truck.

Staging Area Location and Capabilities/Amenities/Waste Management: Stage equipment and manage wastes at the Packers Bay Public Boat Launch.

Response Strategy Map (overview)

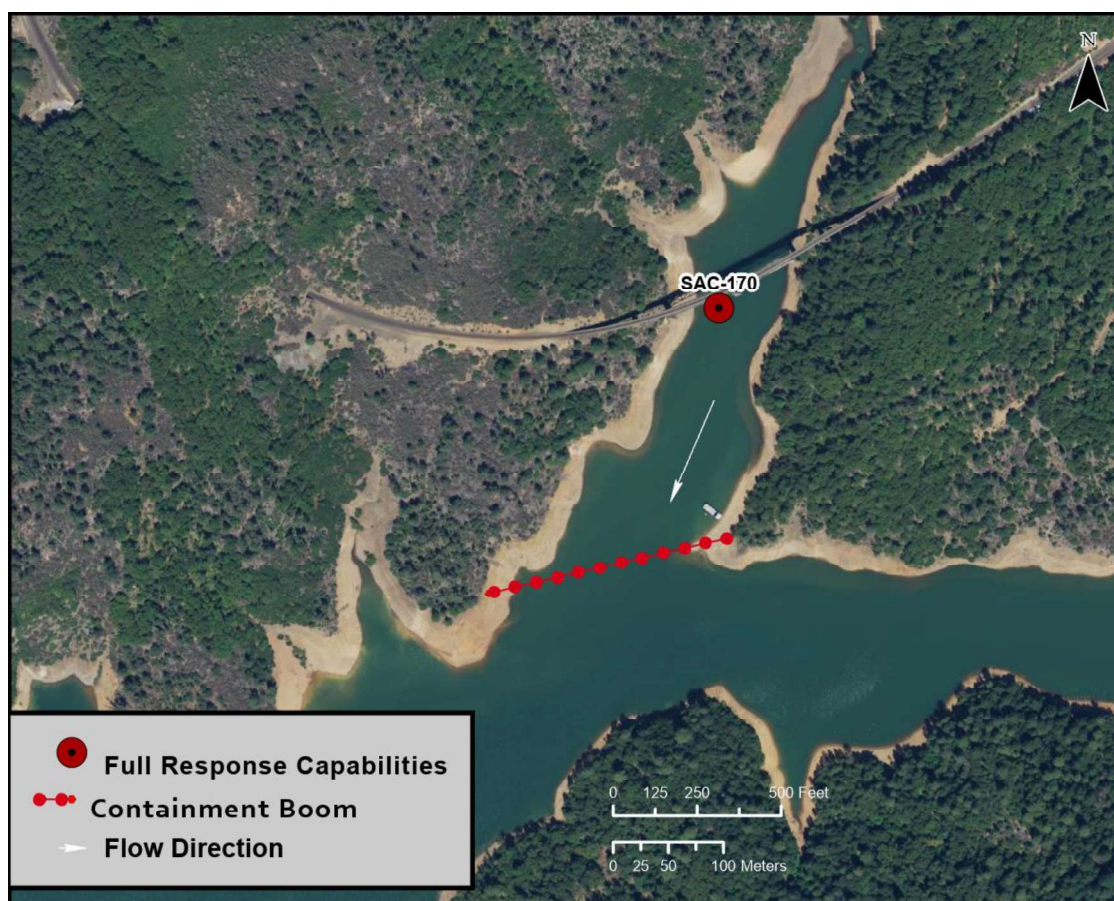


Table of Response Resources

Type	Sub-Type	Size	Unit	QTY - Unit	Special Equipment or Comments
Boom	Containment	21-inch minimum	inch	1,400 feet	Minimum length necessary to boom across cove near the UPRR bridge and to recover product on-water.
Barge	Shallow Water Barge Set			1	Include Disc, Drum, or Weir skimmer.
Response Vessel	Response and Boom Vessel			2	1 each, minimum.
Skimmer	Class 1 Marco or Weir			1	
Storage Tank		20,000	gallon	5	Stage storage tanks at Packers Bay Public Boat Launch.
Vacuum Truck		120	bbl	1	Stage vacuum truck at Packers Bay Public Boat Launch.
Personnel				8 to 12 crew	3 vessel operators and 3 deck hands, minimum.