

Latitude: N 40.844172
Longitude: W -122.353258

Driving Directions

Highway Post Mile: N/A

Railroad Milepost: UPRR 280.24 –
Valley Subdivision

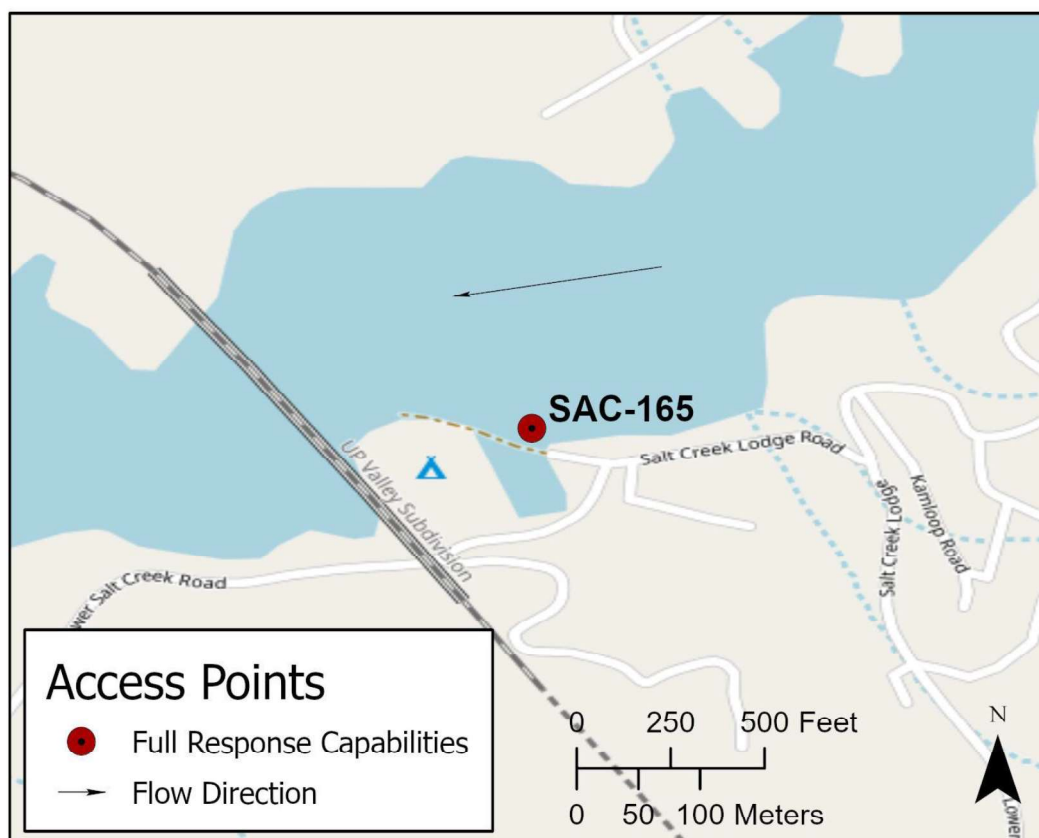
Nearest Address and Thomas Guide #:
N/A

Cell Service: Spotty - Verizon tested

THIS IS AN ON-WATER RESPONSE SITE. There is a boat ramp at the bottom end of Salt Creek Lodge Road beneath the UPRR bridge. To access this location, take the Gilman Road/Salt Creek Road exit off I-5, Exit #698. On the west side of I-5, turn west onto Salt Creek Lodge Road on the south side of Salt Creek. Follow narrow road down to UPRR bridge and boat ramp.

If the Salt Creek Lodge Road boat ramp is not operational due to low lake elevation, then launch boat at the USFS Antlers Public Boat Launch. To get to this boat launch, take the Antlers Road exit, Exit #702, off I-5. On the east side of I-5, head south on Antlers Road. Antlers Public Boat Launch is located approximately 0.6 miles from the Antlers Road exit.

From Antlers Public Boat Launch, launch boat and head 2.55 miles south to the Salt Creek Arm Inlet. Enter the inlet and proceed 2 miles east to the UPRR bridge.

Overview Street Map**Hazards, Restrictions and Advice for Responders**

Use appropriate on-water safety procedures.

Response operations at this location will be dependent on what elevation Lake Shasta is at. At low lake elevations, the boat ramp at the bottom of Salt Creek Lodge Road is not operational. Shoreline response personnel may be able to assist on-water personnel with off-loading recovered product and waste management. If shoreline personnel cannot assist at this location, then recovered product will need to be transported to the Antlers Public Boat Launch for off-loading.

Resources-At-Risk

Ecological: Bald Eagle, Osprey, Western Pond Turtle.

Economic: Fishing guide services, local tourism.

Tribal: Contact the Native American Heritage Commission at (916) 373-3710.

Cultural and Historic: Contact the Northeast Information Center at (530) 898-6256.

Site Description and Field Notes

River Width: At higher lake elevations, 160 meters (525 feet) between north and south shore on west side or UPRR bridge.

Gradient: Low

Site Contact/s:
USDA Forest Service
Shasta-Trinity National Forest

24-Hour Dispatch
(530) 226-2400
(530) 226-2499

Site Location/Segment: SAC-SH-B-020

Vehicular Access: The narrow, winding Salt Creek Lodge Road may be difficult for large vehicles, such as vacuum trucks to navigate.

Recreational Use: Boating, fishing, water-contact.

Boat Launches: At high lake elevations, use the boat launch at the bottom of Salt Creek Lodge Road. If lake elevations are low, then use the Antlers Public Boat Launch.

ESI Shoreline Type: Exposed rocky banks (1A); Exposed eroding banks (3B); Vegetated steeply sloping bluffs (8F).

Site Images



Upstream



Downstream



Boat Ramp

RR = River-Right RL = River-Left

Photo Date: 04/18/2018

Site Objectives: Prevent floating product from entering main body of Lake Shasta. Contain product in Salt Creek Inlet. Recover product using on-water collection strategies.

Implementation: Deploy containment boom between north and south shores of inlet. The length of boom necessary to contain product inside the inlet will depend on the lake elevation and how far product has migrated west due to natural currents inside the inlet. Use response vessels to corral floating product for on-water collection with skimmers. Recover product into storage tanks on barges. Transport recovered product to appropriate off-loading location, depending on lake elevation.

Staging Area Location and Capabilities/Amenities/Waste Management: Depending on lake elevation, stage equipment along dirt shoreline on east side of UPRR bridge or use staging area at the Antlers Public Boat Launch. Manage wastes at appropriate staging location.

Response Strategy Map (overview)

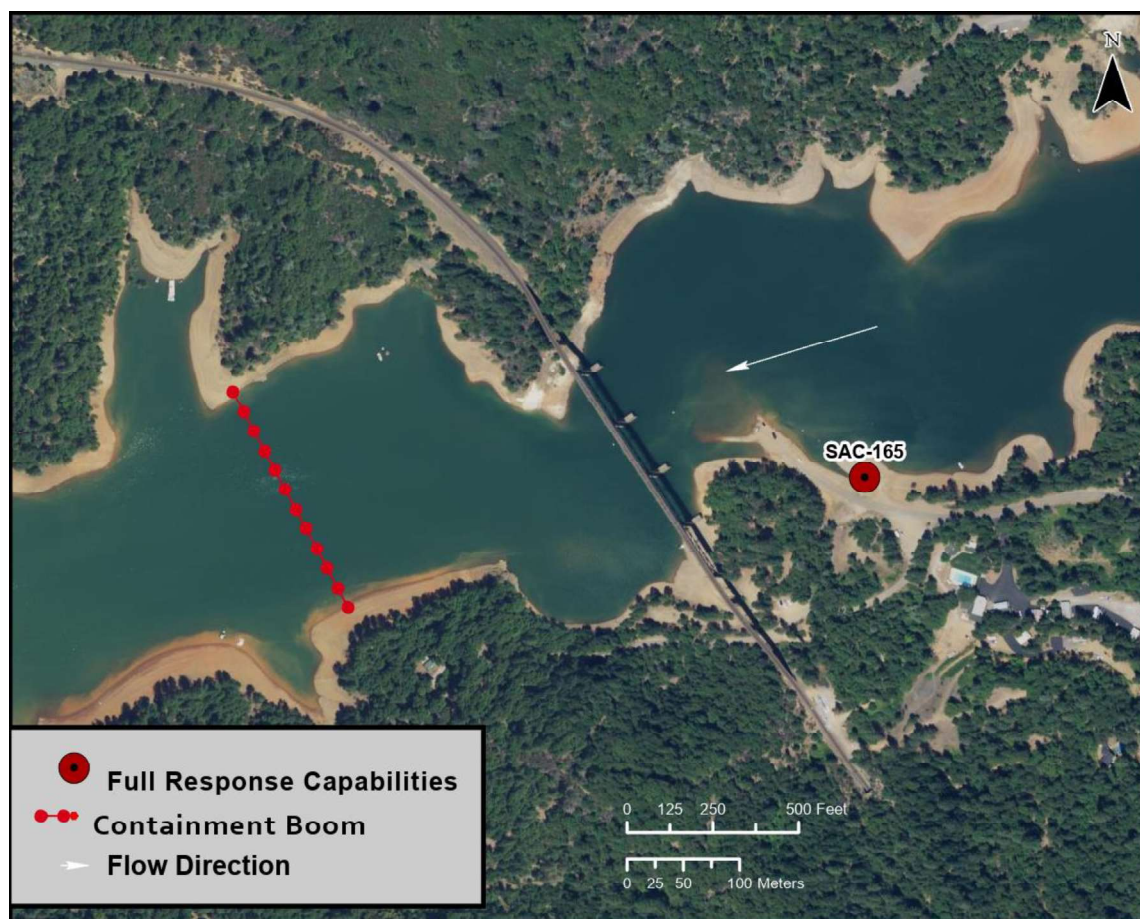


Table of Response Resources

Type	Sub-Type	Size	Unit	QTY - Unit	Special Equipment or Comments
Boom	Containment Boom	21-inch minimum	inch	1,300 feet	Minimum length necessary to boom across inlet and recover product on-water.
Barge	Shallow-Water Barge Set			1	Include Disc, Drum, or Weir skimmer.
Response Vessel	Response and Boom Vessel			2	1 each, minimum.
Skimmer	Class 1 Marco and Weir			1	
Storage Tank		20,000	gallon	5	
Vacuum Truck		70 or 120	bbl	1	70-bbl vacuum truck for use at bottom of Salt Creek Lodge Road and 120-bbl truck for use at Antlers Public Boat Launch.
Personnel				8 to 12 crew	3 vessel operators and 3 deck hands, minimum.