

Latitude: N 40.881882
Longitude: W -122.387429

Driving Directions

Highway Post Mile: N/A

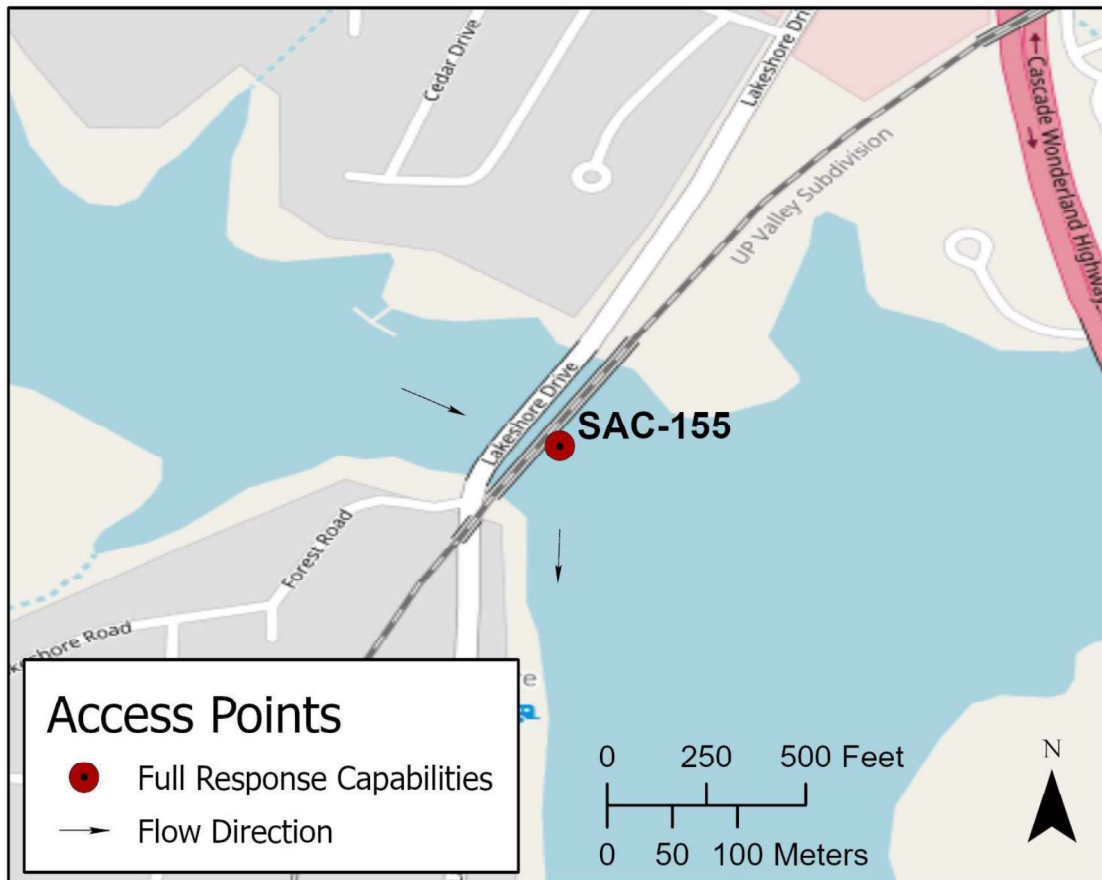
Railroad Milepost: UPRR 283.82 –
Valley Subdivision

Nearest Address and Thomas Guide #:
N/A

Cell Service: Yes - Verizon tested

THIS IS AN ON-WATER RESPONSE SITE. Launch boat at the USFS Antlers Public Boat Launch. To get to this boat launch, take the Antlers Road exit, Exit #702, off I-5. On the east side of I-5, head south on Antlers Road. Antlers Public Boat Launch is located approximately 0.6 miles from the Antlers Road exit.

TO REACH RESPONSE SITE: Launch vessel and head 0.45 miles SW to the mouth of Doney Creek Inlet.

Overview Street Map**Hazards, Restrictions and Advice for Responders**

Use appropriate on-water safety procedures.

Load all response equipment (boom, skimmer, storage, etc.) onto vessels for transport to the response site.

A UPRR bridge crosses Doney Creek Inlet immediately west of the mouth of the inlet and I-5 crosses Lake Shasta about 1,500 feet east of the inlet.

Resources-At-Risk

Ecological: Foothill Yellow-legged Frog

Economic: Tsadi Resort boat docks, Sugarloaf Marina, fishing guide service, local tourism.

Tribal: Contact the Native American Heritage Commission at (916) 373-3710.

Cultural and Historic: Contact the Northeast Information Center at (530) 898-6256.

Site Description and Field Notes

Lake Width: 152 meters (500 feet) at the mouth of Doney Creek Inlet when lake is full.

Gradient: Low

Site Contact/s:
USDA Forest Service
Shasta-Trinity National Forest

24-Hour Dispatch
(530) 226-2400
(530) 226-2499

Site Location/Segment: SAC-SH-B-010

Vehicular Access: Responders can access the north and south shorelines from either end of the Lakeshore Drive bridge over Doney Creek Inlet. Shoreline banks are steep and rocky so most containment and product recovery will occur through on-water operations.

Recreational Use: Boating, fishing, water-contact.

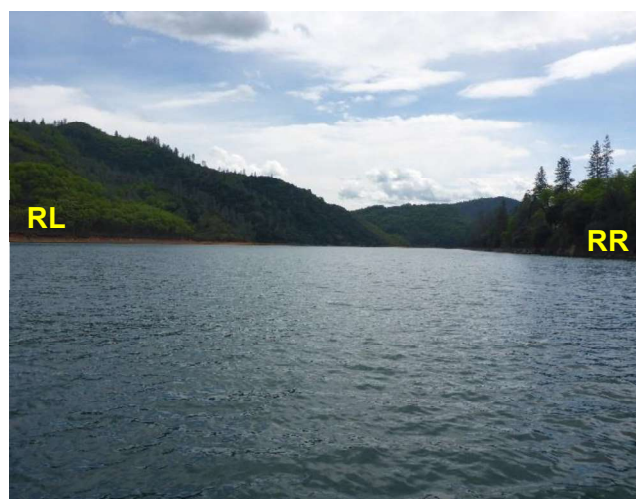
Boat Launches: Use the USFS Antlers Public Boat Launch. See driving directions for location.

ESI Shoreline Type: Exposed rocky banks (1A); Exposed eroding banks (3B); Vegetated steeply sloping bluffs (8F).

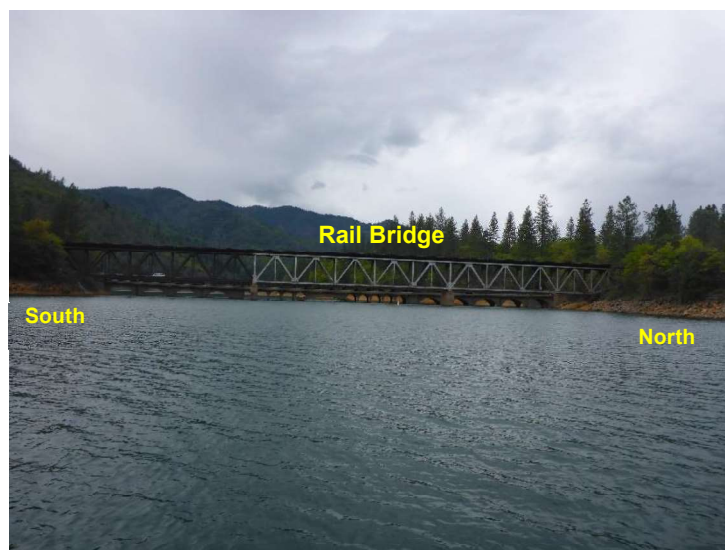
Site Images



Upstream



Downstream



Straight Across/Response Site

RR = River-Right RL = River-Left

Photo Date: 04/18/2018

Site Objectives: Containment and on-water product collection.

Implementation: Place containment boom across the Doney Creek inlet. The length of boom necessary for containment will depend on the lake elevation and whether product has moved downstream of the inlet. If product has moved downstream, attempt to set the boom in a location that will assist with on-water product collection. Above the containment boom, use vessels towing additional boom to corral floating product. Recover product with skimmer and off-load to storage tanks on a support barge. Transport full storage tanks back to Antlers Public Boat Launch for off-loading to a vacuum truck.

Staging Area Location and Capabilities/Amenities/Waste Management: Stage equipment and manage wastes at the Antlers Public Boat Launch.

Response Strategy Map (overview)

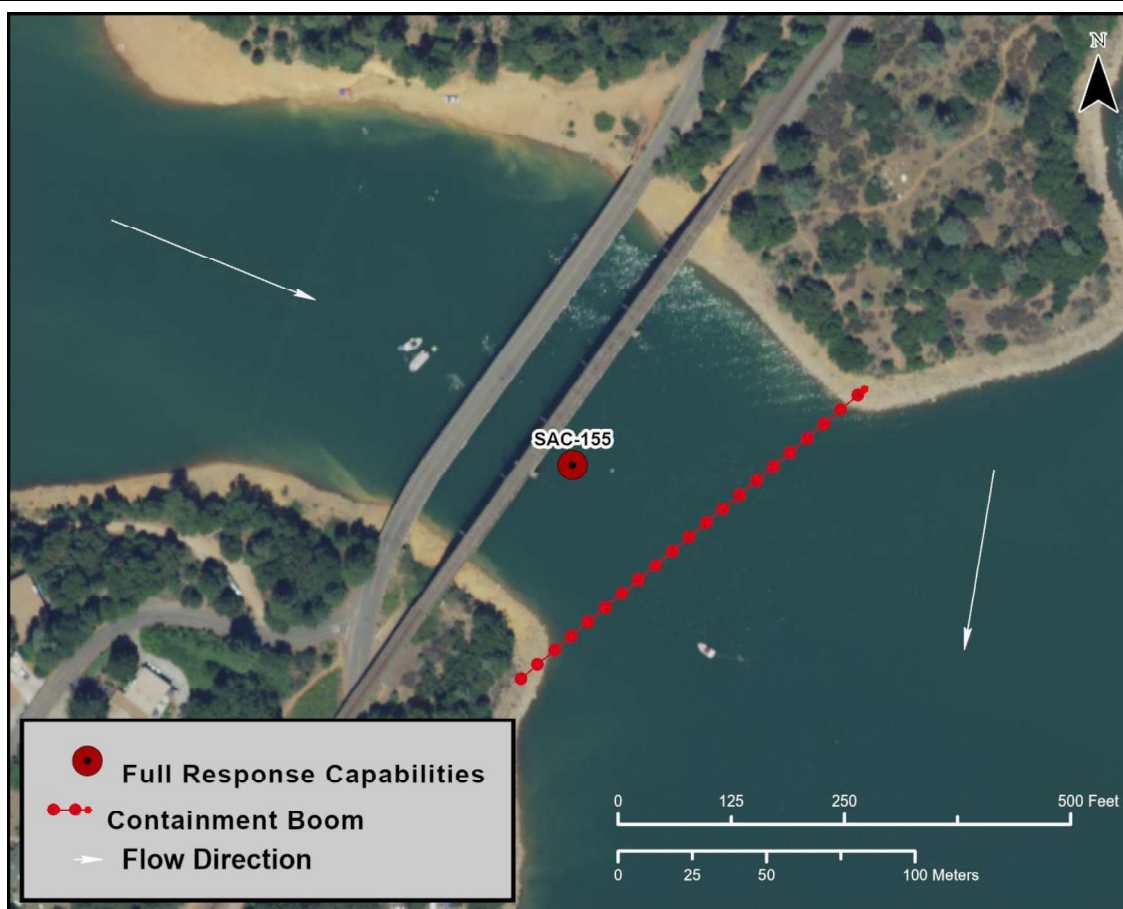


Table of Response Resources

Type	Sub-Type	Size	Unit	QTY - Unit	Special Equipment or Comments
Boom	Containment Boom	21-inch minimum	inch	1,250 feet	Minimum amount necessary for containment at mouth of Doney Creek Inlet and for on-water collection.
Barge	Shallow-Water Barge Set			1	Include Disc, Drum, or Weir skimmer.
Response Vessel	Response and Boom Vessel			2	1 each, minimum.
Skimmer	Class 1 Marco and Weir			1	
Storage Tank		20,000	gallon	5	
Vacuum Truck		120	bbl	1	
Personnel				8 to 12 crew	3 vessel operators and 3 deck hands, minimum.