



Latitude: N 40.896012
Longitude: W -122.369031

Driving Directions

Highway Post Mile: N/A

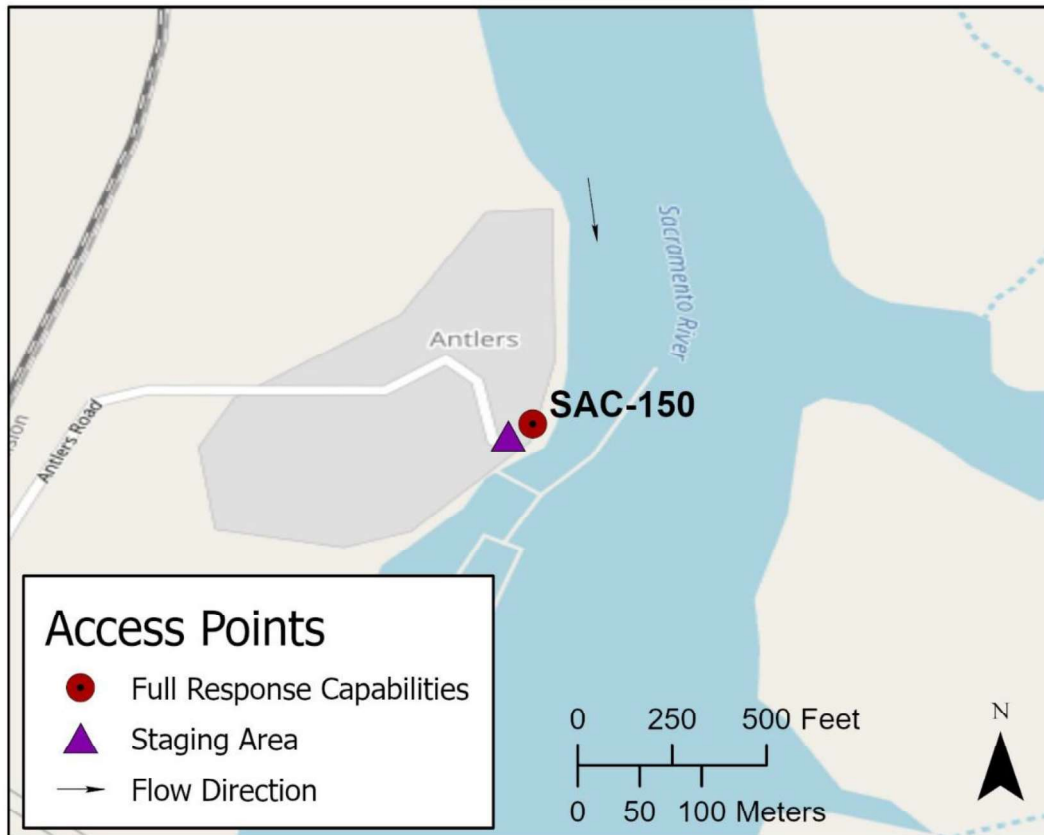
Railroad Milepost: UPRR 285.12 –
Valley Subdivision

Nearest Address and Thomas Guide #:
N/A

Cell Service: Yes – Verizon tested

THIS IS AN ON-WATER RESPONSE SITE. Launch boat at the USFS Antlers Public Boat Launch. To get to this boat launch, take the Antlers Road exit, Exit #702, off I-5. On the east side of I-5, head south on Antlers Road. Antlers Public Boat Launch is located approximately 0.6 miles from the Antlers Road exit.

TO REACH RESPONSE SITE: Launch vessel at Antlers Public Boat Launch and head upstream (NE) approximately 1.4 miles past Antlers Marina.

Overview Street Map**Hazards, Restrictions and Advice for Responders**

Use appropriate on-water safety procedures.

Load all response equipment (boom, skimmer, storage, etc.) onto vessels for transport to the response site.

Responders may be able to access the river-right shoreline above Antlers Resort and Marina. Contact Antlers Resort and Marina during business hours at (530) 238-2553 or after hours at (800) 238-3924.

This is the northern most response site of Division SAC-SH-B.

Resources-At-Risk

Ecological: Bald Eagle, Osprey, Foothill Yellow-legged Frog

Economic: Antlers Resort and Marina, fishing guide services, local tourism.

Tribal: Contact the Native American Heritage Commission at (916) 373-3710.

Cultural and Historic: Contact the Northeast Information Center at (530) 898-6256.



Site Description and Field Notes

Lake Width: 223 meters
(750 feet) when lake is full.

Gradient: Low

Site Contact/s:
USDA Forest Service
Shasta-Trinity National
Forest

24-Hour Dispatch
(530) 226-2400
(530) 226-2499

Site Location/Segment: SAC-SH-B-005

The response site is located above Antlers Marina. Water velocity can be swift during winter and spring runoff. Indian Creek enters Lake Shasta at the small inlet on the east side of the lake just below the response site.

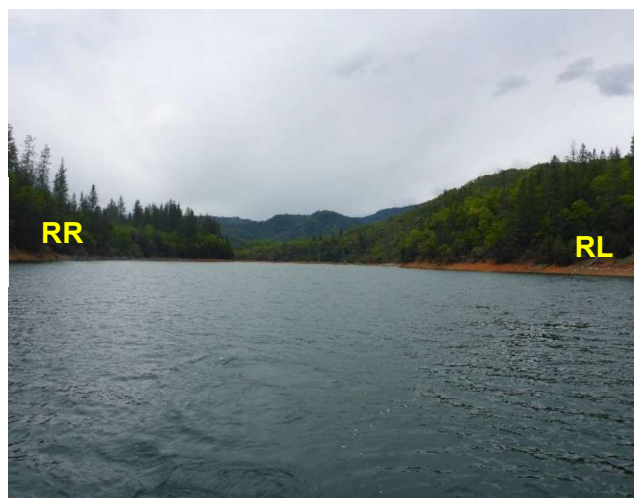
Vehicular Access: Boat access only.

Recreational Use: Boating, fishing, water-contact.

Boat Launches: Use the USFS Antlers Public Boat Launch. See driving directions for location.

ESI Shoreline Type: Exposed rocky banks (1A); Exposed eroding banks (3B); Vegetated steeply sloping bluffs (8F).

Site Images



Upstream



Downstream



Straight Across

RR = River-Right RL = River-Left

Photo Date: 04/18/2018



Site Objectives: Containment and on-water product collection.

Implementation: Place containment boom across lake above the Indian Creek inlet. The length of boom necessary for containment will depend on the lake elevation. Above the containment boom, use vessels towing additional boom to corral floating product. Recover product with skimmer and off-load to storage tanks on a support barge. Transport full storage tanks back to Antlers Public Boat Launch for off-loading to a vacuum truck.

Staging Area Location and Capabilities/Amenities/Waste Management: Stage equipment and manage wastes at the Antlers Public Boat Launch.

Response Strategy Map (overview)

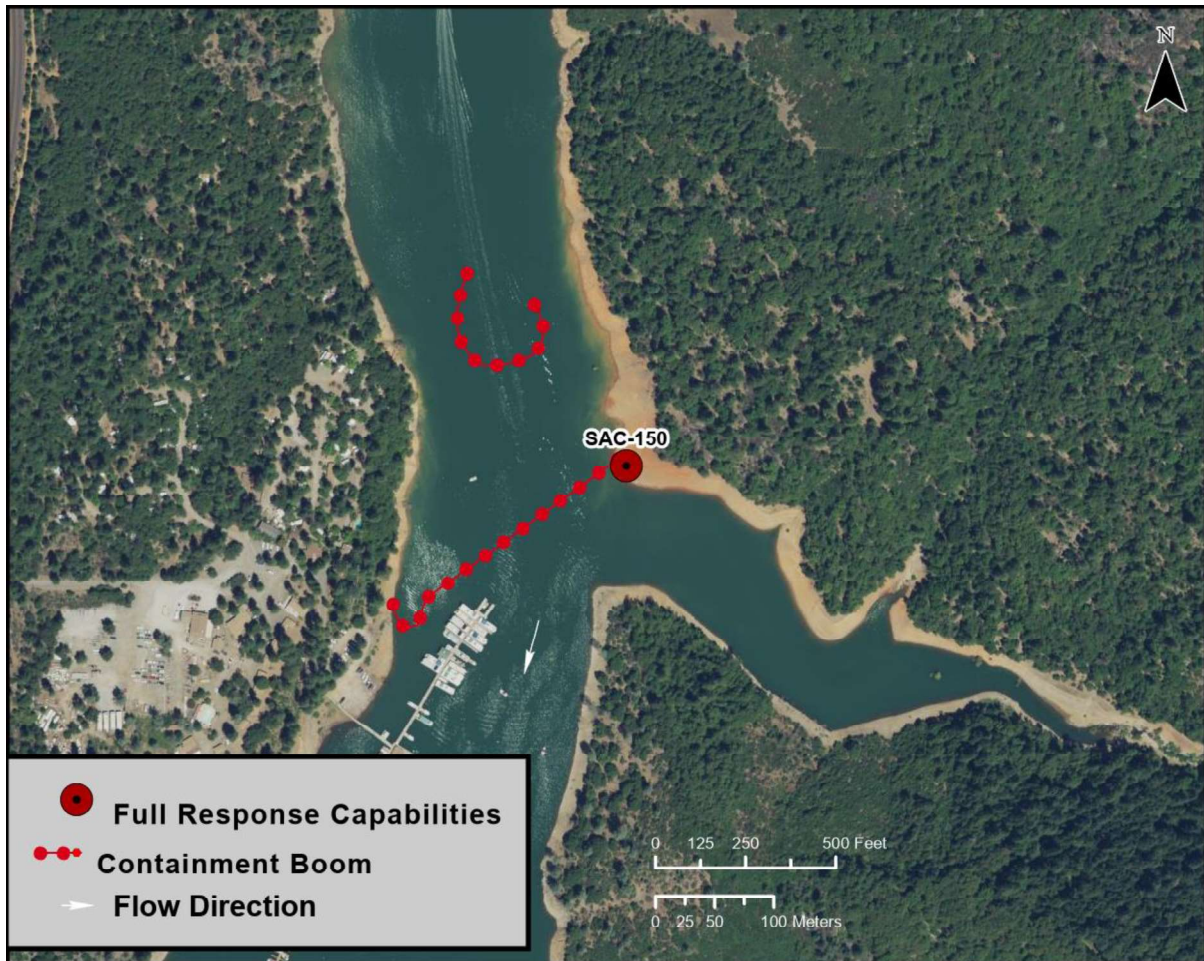


Table of Response Resources

Type	Sub-Type	Size	Unit	QTY - Unit	Special Equipment or Comments
Boom	Containment Boom	21-inch minimum	inch	1,500 feet	Minimum length necessary to boom across lake and for collecting product on-water.
Barge	Shallow-Water Barge Set			1	Include Disc, Drum, or Weir skimmer.
Response Vessel	Response and Boom Vessel			2	1 each, minimum.
Skimmer	Class 1 Marco and Weir			1	
Storage Tank		20,000	gallon	5	
Vacuum Truck		120	bbl	1	
Personnel				8 to 12 crew	3 vessel operators and 3 deck hands, minimum.