

Latitude: N 40.926723
Longitude: W -122.402642

Driving Directions

Highway Post Mile: N/A

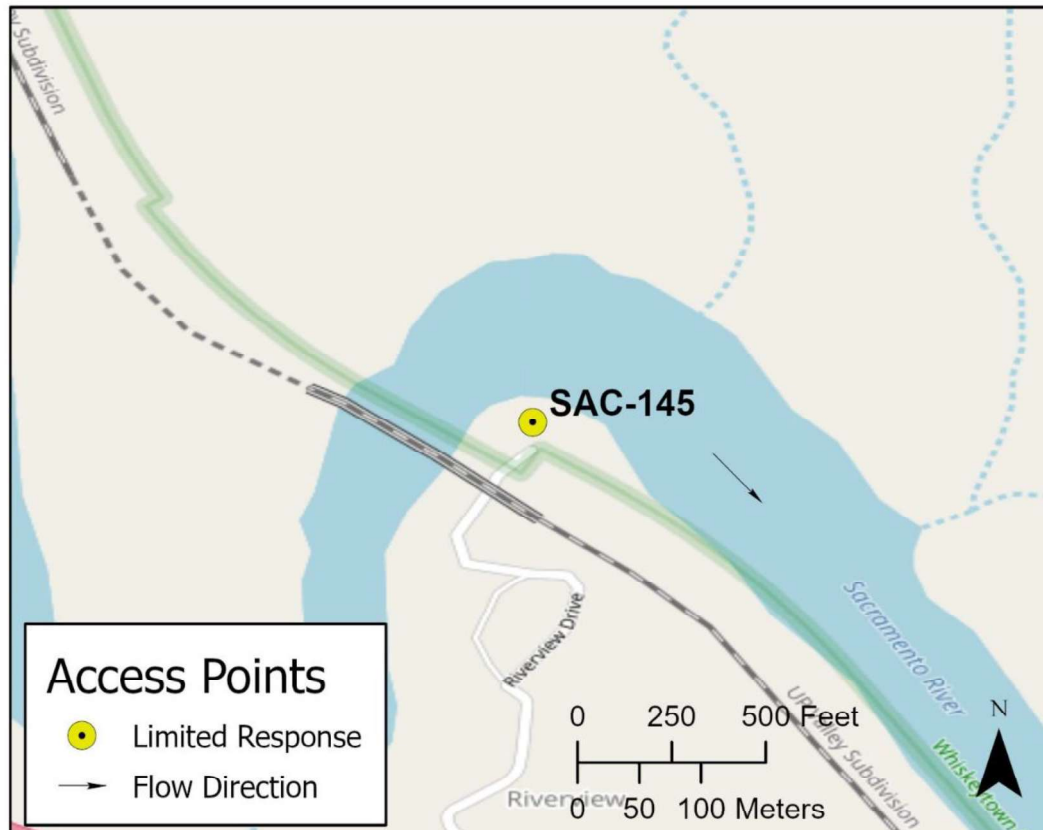
Take the Riverview Drive exit, Exit #704, off I-5 in Lakehead. Head east on Riverview Drive past the YIELD sign. Turn left (N) at the next junction (still Riverview Drive). Follow road north till it ends at a turnaround. Take the dirt road on the left at the road circle and drive past the house on the left. Follow dirt road down to the Sacramento River and response site.

Railroad Milepost: UPRR 287.89 – Valley Subdivision

Nearest Address and Thomas Guide #: N/A

ALTERNATE: Response site is also accessible via boat (when Lake Shasta water levels are high) launched from the USFS's Antlers Boat Launch facility on Lake Shasta, located off Antlers Road, Lakehead.

Cell Service: Yes – Verizon tested

Overview Street Map**Hazards, Restrictions and Advice for Responders**

The response site is located at a sandy beach on a sharp bend in the river immediately above Lake Shasta. Responders should use caution when driving on the beach to avoid getting vehicles stuck in the sand and mud near the water.

It's possible to access the response site using a boat launched at the USFS's Antlers Boat Launch facility on Lake Shasta. This may be the best approach for bringing on-water response assets to this location. Support equipment could still be brought to the site via the Riverview Drive access.

This response site is the southern end of Division SAC-SH-A. Division SAC-SH-B starts at Lake Shasta.

Elevation at the site is 1,063 feet above MSL.

Resources-At-Risk

Ecological: Bald Eagle, Osprey, Foothill Yellow-legged Frog

Economic: Fishing guide services, Lake Shasta marinas, local recreation/tourism.

Tribal: Contact the Native American Heritage Commission at (916) 373-3710.

Cultural and Historic: Contact the Northeast Information Center at (530) 898-6256.

Site Description and Field Notes

River Width: 37 meters
(120 feet)

Gradient: Medium to low

Site Contact/s:

USDA Forest Service
Shasta-Trinity National
Forest

24-Hour Dispatch
(530) 226-2400
(530) 226-2499

Site Location/Segment: SAC-SH-A-065

Vehicular Access: The dirt access road for this site is in poor condition. High clearance 4wd vehicles can access the site without improvements, but the access road would need to be graded to get other vehicle types into the response site.

Recreational Use: Fishing, boating, water-contact.

Boat Launches: Use shoreline for launching rafts or kayaks. It may be possible to launch a small skiff from the shoreline at this site. Nearest public boat launch is located at the USFS's Antlers Boat Launch facility on Lake Shasta, located off Antlers Road, Lakehead.

ESI Shoreline Type: Exposed rocky banks (1A); Exposed rocky cliffs with boulder talus base (1C); Rocky shoals and bedrock ledges (2A); Mixed sand and gravel bars and gently sloping banks (5); Vegetated steeply sloping bluffs (8F); Vegetated low banks (9B).

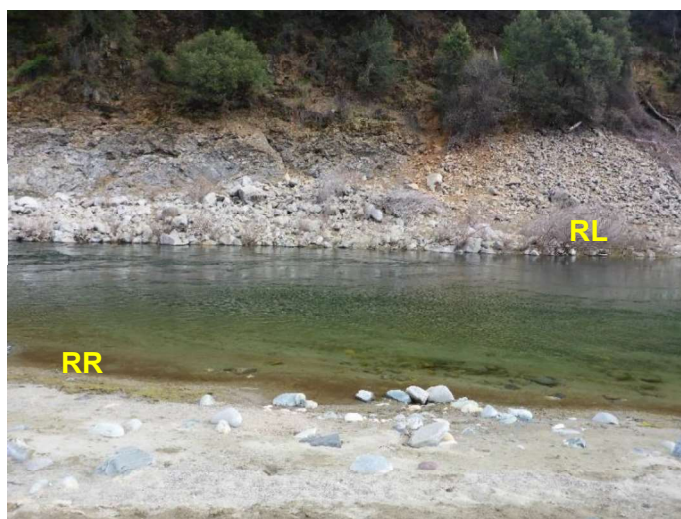
Site Images



Upstream



Downstream



Straight Across

RR = River-Right RL = River-Left

Photo Date: 03/12/2018

Site Objectives: Deflection boom and product collection.

Implementation: Set upstream anchor on river-left shore at the top of the pool and deploy 500 feet of swiftwater boom. Deflect product to the eddy on the river-right shore at the lower part of the pool. Use excess boom to protect shoreline at collection area. Pump recovered product to storage tanks on the shoreline or use on-water recovery operations and pump product to storage tanks on a barge.

Staging Area Location and Capabilities/Amenities/Waste Management: With access road improvements, response assets can be staged and waste products managed above the shoreline at the bottom of Riverview Drive. Additional staging locations may be considered where the road circles at the end of the paved portion of Riverview Drive or at the USFS's Antlers Boat Launch facility.

Response Strategy Map (overview)

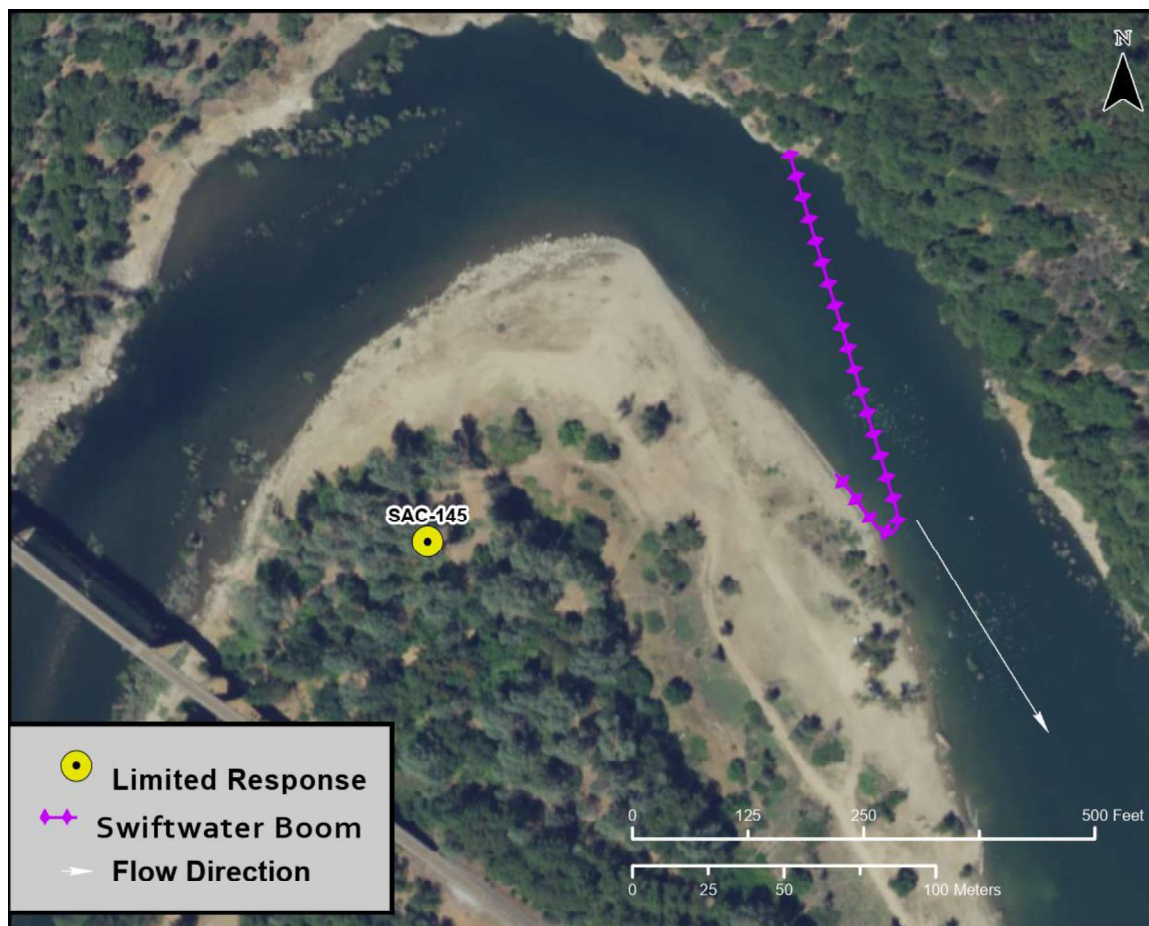


Table of Response Resources

Type	Sub-Type	Size	Unit	QTY - Unit	Special Equipment or Comments
Boom	Sorbent	5 to 8	inch	800 feet	
Boom	Swiftwater	8 to 12	inch	500 feet	
Skimmer	Disc, Drum, or Weir			1	
Pumps	High Speed			3	To pump recovered product up shoreline into storage tanks on vehicles if not collecting product on-water using vessels.
Storage Tank		20,000	gallon	5	Set up remotely, not on shoreline. Consider setting tanks up at end of Riverview Drive.
Vacuum Truck		120	bbl	1	For off-loading at Antlers Boat Launch or end of Riverview Drive.
Personnel				6 to 8 crew	