

Latitude: N 40.93826
Longitude: W -122.41789

Driving Directions

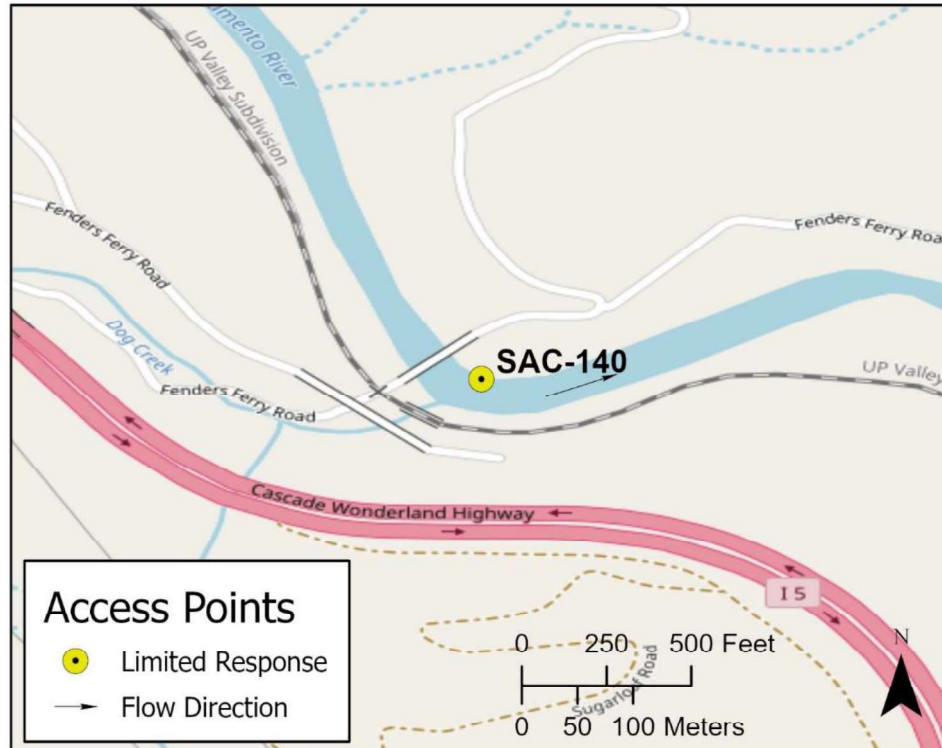
Highway Post Mile: N/A

Railroad Milepost: UPRR 296.24 –
Valley Subdivision

Nearest Address and Thomas Guide #:
N/A

Cell Service: Poor reception – Verizon
tested

Take the Dog Creek Road/Delta Road exit, Exit #707, off I-5. This leads to the communities of Vollmers and Delta. Head west on Dog Creek Road. On the west side of I-5, turn left (SE) onto Fenders Ferry Road. NOTE: THE BRIDGES ON FENDERS FERRY ROAD HAVE SPECIFIC LOAD LIMITS THAT MUST BE CONSIDERED BEFORE CROSSING. Follow dirt road down and east along Dog Creek, under the I-5 bridge. Cross the UPRR tracks and continue over the bridge over the Sacramento River. Response site is at the downstream gravel bar on the east side of the bridge.

Overview Street Map**Hazards, Restrictions and Advice for Responders**

Fenders Ferry Road has two bridges over Dog Creek and one bridge over the Sacramento River. These bridges have specific load limits, depending on how many axles a vehicle has. Vehicles with gross weights in excess of 20 tons should consult the USFS about safety and the need for an excess load permit.

Fenders Ferry Road is a narrow dirt road that leads to the response site. The dirt road leading to the response site (gravel bar on the east side of the bridge over the Sacramento River) is in poor condition but may be passable with 4WD vehicle. This short access road would need grading improvements in order to drive equipment down to the response site. Otherwise, response crews will need to carry equipment down to the water.

UPRR crossing #750537G is located on the west side of the Sacramento River.

Site elevation is 1,080 feet above MSL.

Resources-At-Risk

Ecological: Bald Eagle, Osprey, Foothill Yellow-legged Frog, northern clarkia

Economic: Fishing guide services

Tribal: Contact the Native American Heritage Commission at (916) 373-3710.

Cultural and Historic: Contact the Northeast Information Center at (530) 898-6256.

Site Description and Field Notes

River Width: 38 meters
(125 feet)

Gradient: Low to medium

Site Contact/s:
USDA Forest Service
Shasta-Trinity National
Forest

24-Hour Dispatch
(530) 226-2400
(530) 226-2499

Site Location/Segment: SAC-SH-A-060

Vehicular Access: All vehicle types can access this site but recommend high-clearance vehicle. 4WD vehicle is needed to drive down to the gravel bar at the response site.

Recreational Use: Fishing, rafting/kayaking, water contact.

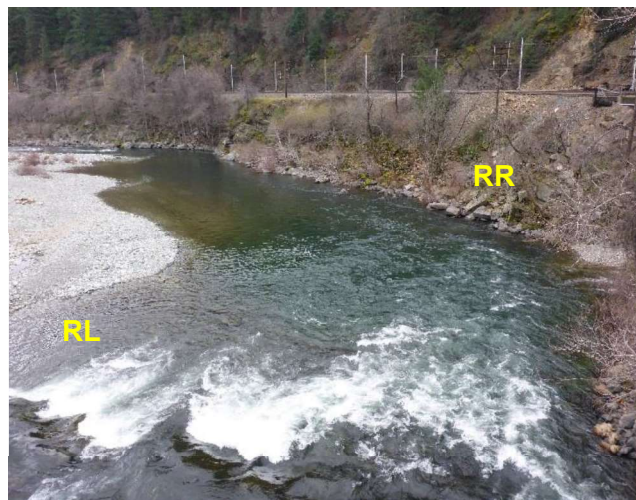
Boat Launches: Use shoreline for launching rafts or kayaks. There are no boat ramps along the upper Sacramento River between Box Canyon Dam and Lake Shasta (Divisions SAC-SK-A and SAC-SH-A).

ESI Shoreline Type: Exposed rocky banks (1A); Rocky shoals and bedrock ledges (2A); Gravel bars and gently sloping banks (6A); Vegetated steeply sloping bluffs (8F); Vegetated low banks (9B).

Site Images



Upstream



Downstream



Straight Across

RR = River-Right RL = River-Left

Photo Date: 03/12/2018

Site Objectives: Deflection boom and product collection.

Implementation: Anchor boom upstream of bridge on river-right shoreline and attempt to deflect product toward slower water along the gravel bar downstream of the bridge on the river-left shoreline. Deploy 450 feet of swiftwater boom. Use excess boom to protect shoreline at collection area. Crews may need to set up a series of pumps to pump recovered product up to a vacuum truck on Fenders Ferry Road.

Staging Area Location and Capabilities/Amenities/Waste Management: There is not a lot of space for staging equipment or managing wastes at this site. There is some space available along the UPRR track siding on the north side of Fenders Ferry Road. Additional staging may be possible near the intersection of Dog Creek Road and Fenders Ferry Road.

Response Strategy Map (overview)

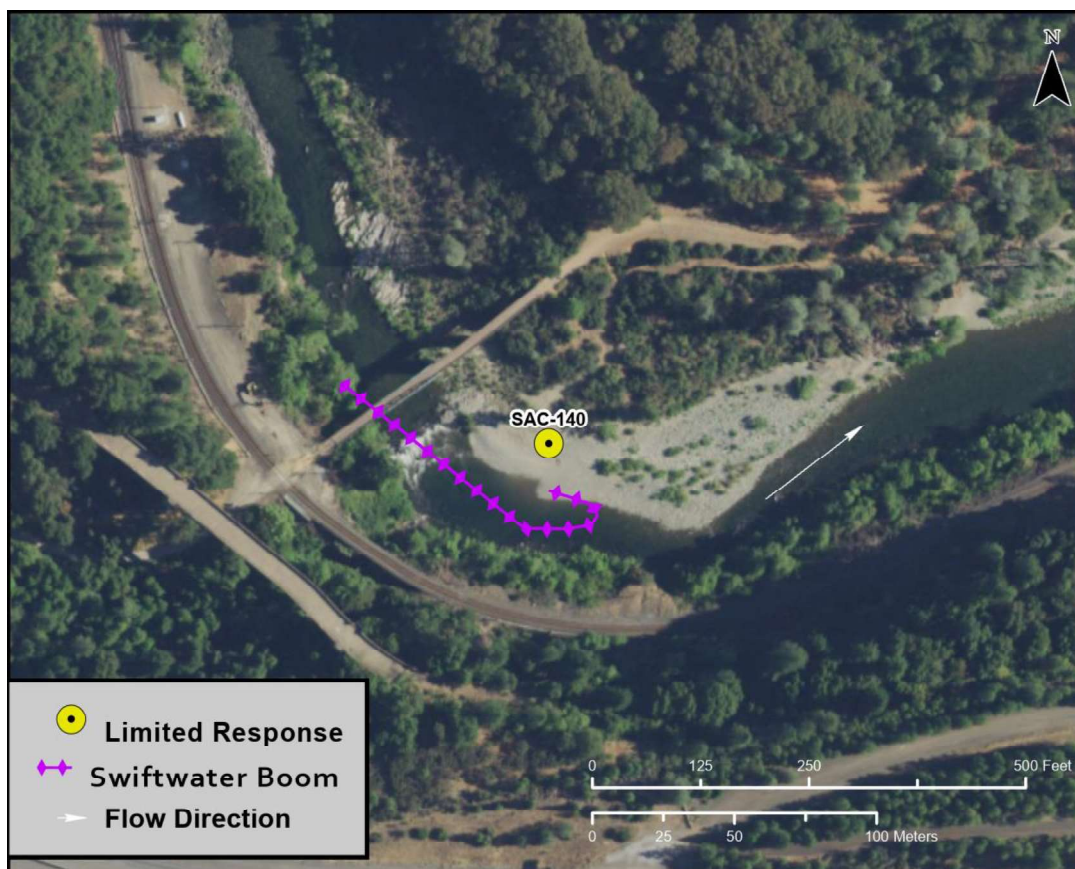


Table of Response Resources

Type	Sub-Type	Size	Unit	QTY - Unit	Special Equipment or Comments
Boom	Sorbent	5 to 8	inch	800 feet	
Boom	Swiftwater	8 to 12	inch	450 feet	
Skimmer	Disc or Drum			1	
Pumps	High Speed			3	To pump recovered product up to vacuum truck or storage tanks on road above water.
Storage Tank		20,000	gallon	5	
Vacuum Truck		70	bbl	1	
Pads and Sweep	Sorbent		bale	40	
Personnel				6 to 8 crew	