

<b>Latitude:</b> N 40.944541 <b>Longitude:</b> W -122.425751	<b>Driving Directions</b>
<b>Highway Post Mile:</b> N/A	Take the Dog Creek Road/Delta Road exit off I-5, Exit #707. This leads to communities of Vollmers and Delta. On the east side of I-5, turn north toward McCardle Flat Road/Delta Road. Bear right (east) onto Delta Road and follow road downhill to the community of Delta along the Sacramento River. Park in the dirt UPRR right-of-way off Delta Road. Response site is accessed via a hiking trail on the east side of the tracks slightly upriver from the parking area.
<b>Railroad Milepost:</b> UPRR 296.73 – Valley Subdivision	
<b>Nearest Address and Thomas Guide #:</b> N/A	
<b>Cell Service:</b> Yes – Verizon tested	

## Overview Street Map



## Hazards, Restrictions and Advice for Responders

Responders have to cross the UPRR tracks to access the Sacramento River. Coordinate response access with UPRR Response Management Communications Center (RMCC) at (888) 877-7267.

Response personnel will need to carry boom, skimmer, storage tanks, and other equipment down to response site at the beach. Responders need a raft or kayak to reach the river-left shoreline.

Responders may be able to use a rail car on the track siding to collect recovered product, otherwise crews will need to run vacuum lines under the tracks. If necessary, setting up a series of pumps may be needed to pump product up from the river.

## Resources-At-Risk

**Ecological:** Bald Eagle, Osprey, Foothill Yellow-legged Frog, northern clarkia

**Economic:** Fishing guide services

**Tribal:** Contact the Native American Heritage Commission at (916) 373-3710.

**Cultural and Historic:** Contact the Northeast Information Center at (530) 898-6256.

## Site Description and Field Notes

**River Width:** 27 meters  
(90 feet)

**Gradient:** Low

**Site Contact/s:**

UPRR RMCC  
(888) 877-7267

**Site Location/Segment:** SAC-SH-A-055

Response site is located at a beach at a bend in the river. Site elevation is 1,094 feet above MSL.

**Vehicular Access:** All vehicle types should be able to access the parking area along the UPRR track right-of-way. Narrow road may be challenging for a vacuum truck to access.

**Recreational Use:** Fishing, rafting/kayaking, water contact.

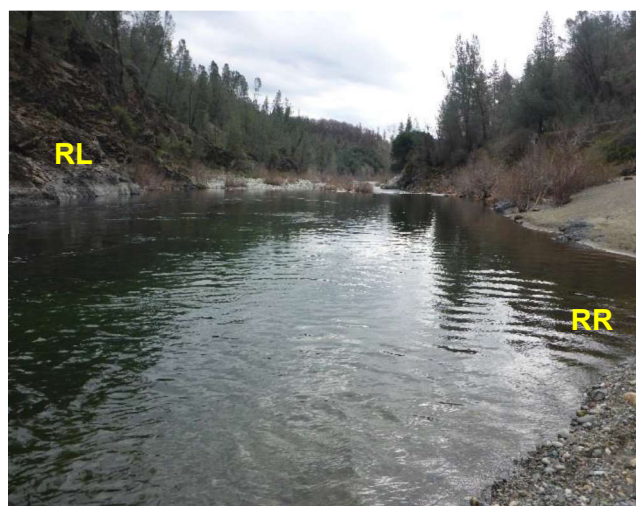
**Boat Launches:** Use shoreline for launching rafts or kayaks. There are no boat ramps along the upper Sacramento River between Box Canyon Dam and Lake Shasta (Divisions SAC-SK-A and SAC-SH-A).

**ESI Shoreline Type:** Exposed rocky banks (1A); Exposed rocky cliffs with boulder talus base (1C); Rocky shoals and bedrock ledges (2A); Mixed sand and gravel bars and gently sloping banks (5); Vegetated steeply sloping bluffs (8F); Vegetated low banks (9B).

## Site Images



Upstream



Downstream



Straight Across

RR = River-Right RL = River-Left

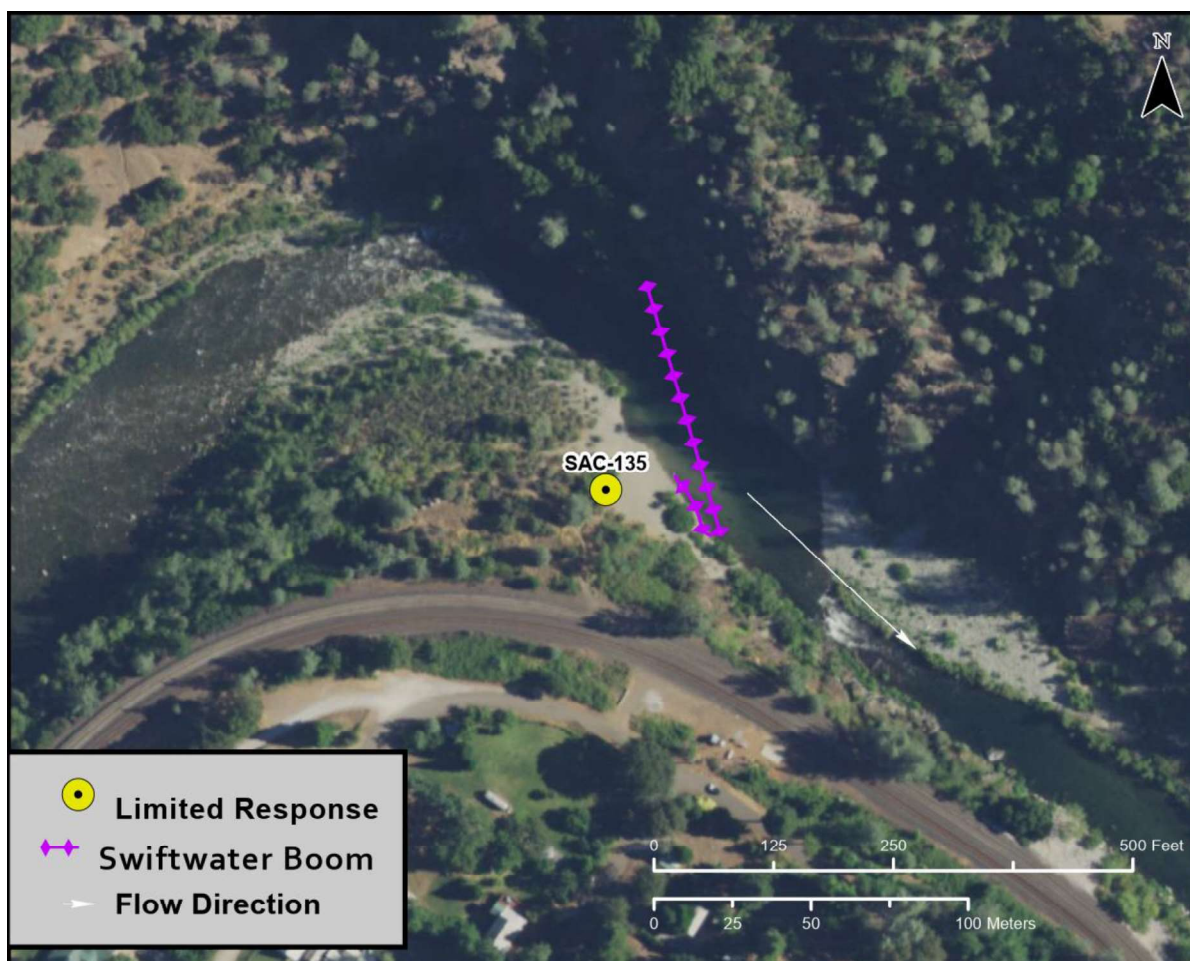
Photo Date: 03/12/2018

**Site Objectives:** Deflection boom and product collection.

**Implementation:** Anchor upstream boom at river bend on river-left shoreline above slower water downstream. Deploy 400 feet of swiftwater boom to direct product to eddy at beach on river-right shoreline. Use excess boom to protect shoreline at collection area. Best product recovery site is located in the eddy at the upper portion of the pool on the river-right shoreline. Pump recovered product uphill to storage tanks or vacuum truck.

**Staging Area Location and Capabilities/Amenities/Waste Management:** Equipment staging and waste management activities can occur along the UPRR track siding and at the north end of Delta Road upstream of the track siding area.

### Response Strategy Map (overview)



**Table of Response Resources**

Type	Sub-Type	Size	Unit	QTY - Unit	Special Equipment or Comments
Boom	Sorbent	5 to 8	inch	600 feet	
Boom	Swiftwater	8 to 12	inch	400 feet	
Skimmer	Disc, Drum, or Weir			1	
Storage Tank		20,000	gallon	5	
Vacuum Truck		70	bbl	1	
Pumps	High Speed			3	To pump recovered product to vacuum truck on west side of rail tracks.
Personnel				6 to 8 crew	