

Latitude: N 40.951563
Longitude: W -122.431664

Driving Directions

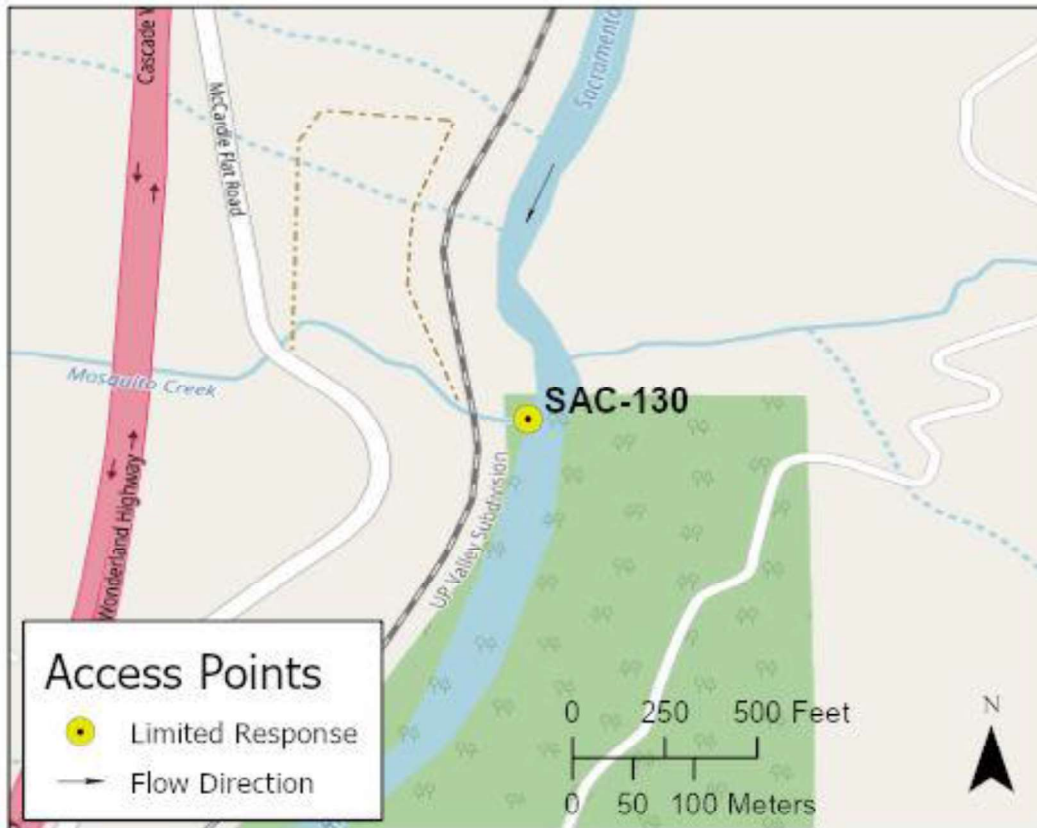
Highway Post Mile: N/A

Railroad Milepost: UPRR 297.94 –
Valley Subdivision

Nearest Address and Thomas Guide #:
N/A

Cell Service: Yes – Verizon tested

From I-5, take the Dog Creek Road/Delta Road off ramp, Exit #707. This leads to the communities of Vollmers and Delta. On the east side of I-5, head north toward Delta Road/McCardle Flat Road and stay left onto McCardle Flat Road. Continue north on McCardle Flat Road and take the dirt road on the right about 1 mile north of Delta Road. Follow this dirt road down to another dirt road that parallels the UPRR tracks and the Sacramento River. Head south on the dirt road paralleling the tracks for 0.2 miles to a small turnout on the west side of the tracks. Park in this turnout. Response site is on the east side of the UPRR tracks at the confluence of Mosquito Creek and the Sacramento River.

Overview Street Map**Hazards, Restrictions and Advice for Responders**

For work around UPRR tracks, contact UPRR Response Management Communications Center (RMCC) at (888) 877-7267.

Responders will need a raft or kayak to reach the river-left shoreline.

It's possible for responders to use the large concrete culvert of Mosquito Creek to run suction hoses through to the response site at the Sacramento River.

Site elevation is 1,155 feet above MSL.

Resources-At-Risk

Ecological: Osprey, Bald Eagle, Foothill Yellow-legged Frog

Economic: Fishing guide services

Tribal: Contact the Native American Heritage Commission at (916) 373-3710.

Cultural and Historic: Contact the Northeast Information Center at (530) 898-6256.

Site Description and Field Notes

River Width: 14 meters
(45 feet)

Gradient: Low to medium

Site Contact/s:

UPRR RMCC
(888) 877-7267

Site Location/Segment: SAC-SH-A-055

The dirt access road paralleling the UPRR tracks and the Sacramento River may need some minor grading at a point about 150 yards upstream of the response site in order to get large vehicles into the site.

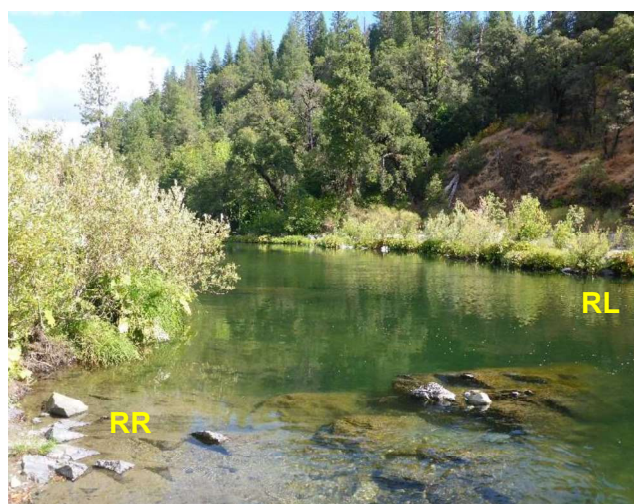
Vehicular Access: High-clearance vehicles are recommended.

Recreational Use: Fishing, rafting/kayaking, water-contact.

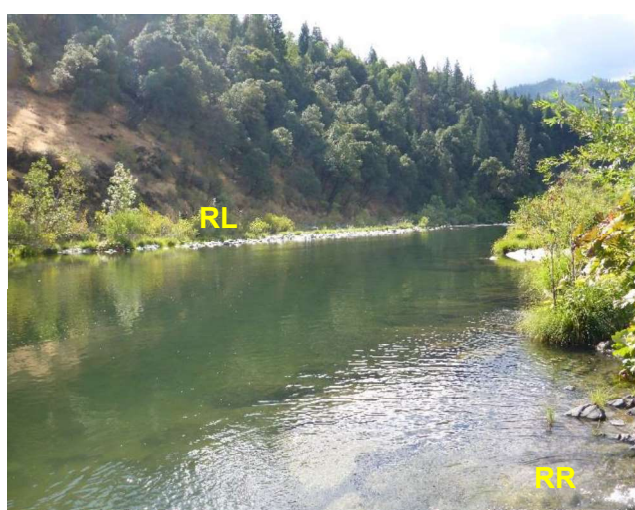
Boat Launches: Use shoreline for launching rafts or kayaks. There are no boat ramps along the upper Sacramento River between Box Canyon Dam and Lake Shasta (Divisions SAC-SK-A and SAC-SH-A).

ESI Shoreline Type: Exposed rocky banks (1A); Rocky shoals and bedrock ledges (2A); Vegetated, steeply sloping bluffs (8F); Vegetated low banks (9B).

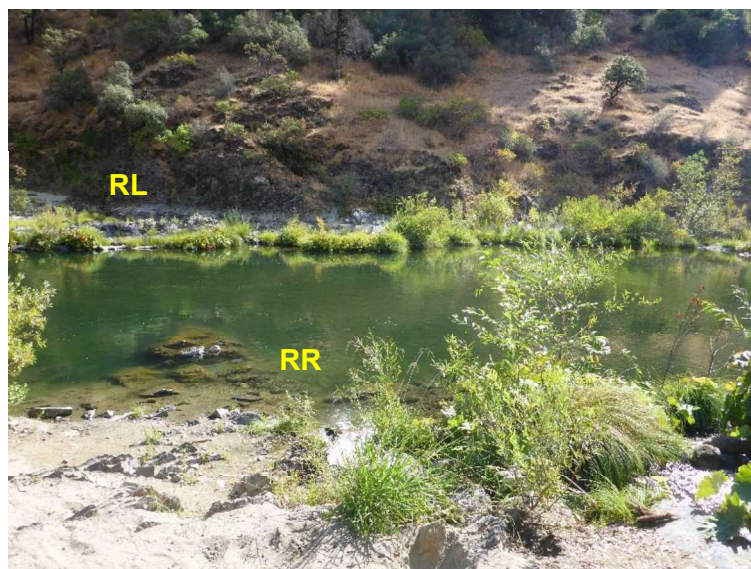
Site Images



Upstream



Downstream



Straight Across

RR = River-Right RL = River-Left

Photo Date: 09/19/2017

Site Objectives: Deflection boom and product collection.

Implementation: Deploy 300 feet of swiftwater boom from upstream on river-left shoreline to eddy along the river-right shoreline at the confluence of Mosquito Creek and the Sacramento River. Use excess boom to protect shoreline at collection area. Collect product with skimmer and transfer to vacuum truck. At lower flows in Mosquito Creek, it may be possible to run transfer hoses through the large concrete culvert that runs under the dirt access road instead of running hoses under the UPRR tracks.

Staging Area Location and Capabilities/Amenities/Waste Management: Stage response resources and manage wastes in open space at McCardle Flat upstream and west of the response site.

Response Strategy Map (overview)

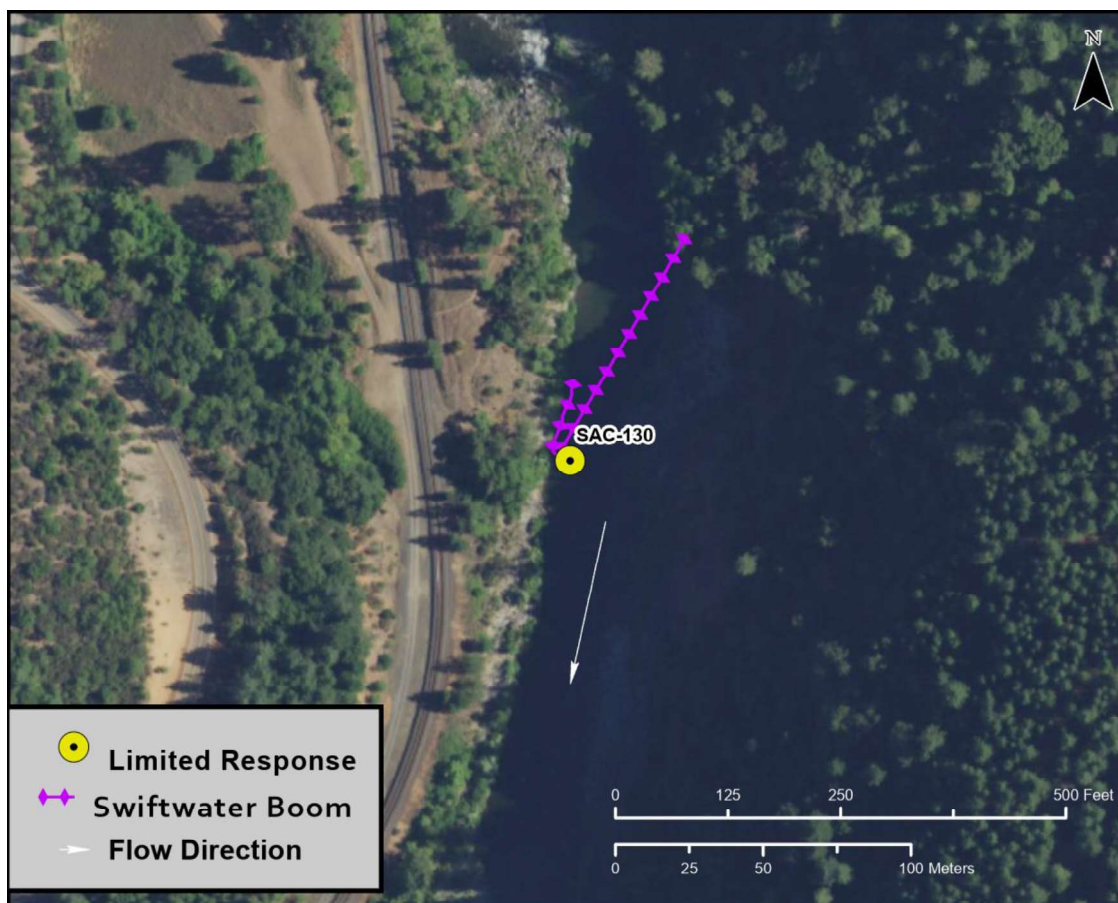


Table of Response Resources

Type	Sub-Type	Size	Unit	QTY - Unit	Special Equipment or Comments
Boom	Sorbent	5 to 8	inch	400 feet	
Boom	Swiftwater	8 to 12	inch	300 feet	
Skimmer	Disc or Drum			1	
Pumps	High Speed			2	To pump recovered product up to storage tanks.
Storage Tank		20,000	gallon	5	
Vacuum Truck		70	bbl	1	
Pads and Sweep	Sorbent		bale	40	
Personnel				6 to 8 crew	