

Latitude: N 40.977023
Longitude: W -122.431892

Driving Directions

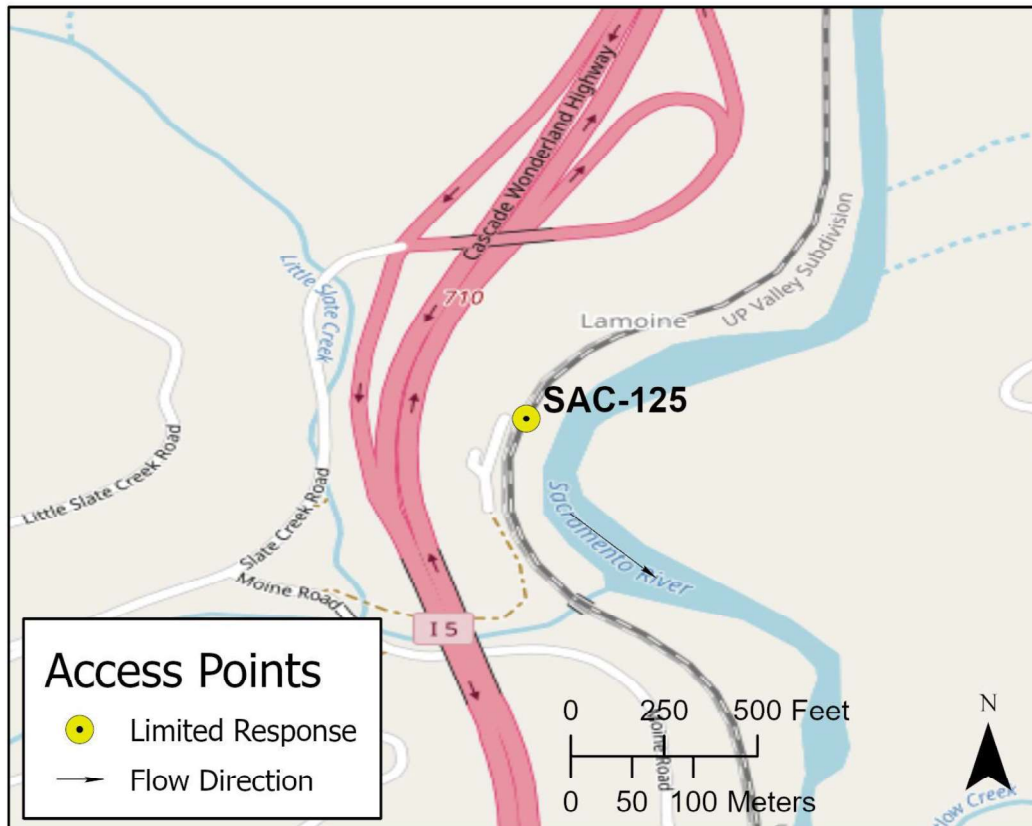
Highway Post Mile: N/A

Railroad Milepost: UPRR 300.17 –
Valley Subdivision

Nearest Address and Thomas Guide #:
N/A

Cell Service: Yes – Verizon tested

Take the Slate Creek Road exit, Exit #710, off I-5. Head west over I-5 and turn southeast onto Moine Road (first dirt road on the left on west side of I-5). There is a locked gate controlled by UPRR on a dirt road that leads east under the I-5 overpass. Slate Creek flows under the I-5 overpass where it joins the Sacramento River. UPRR tracks are located on the east side of the I-5 overpass. The response site is located approximately 200 yards north (upstream) of Slate Creek and adjacent to the UPRR tracks.

Overview Street Map**Hazards, Restrictions and Advice for Responders**

Follow the UPRR right-of-way upstream of Slate Creek to a UPRR generator station above the tracks. There is a small drainage on the north side of the generator station that funnels storm water to the Sacramento River. The response site is located on the upstream side of this small drainage. The culvert in this drainage could be used to run product recovery lines down to the river so crews would not have to run lines under the UPRR tracks. There is a hiking trail that leads down to the river.

Responders can drive to the generator station. Coordinate response access with UPRR Response Management Communications Center (RMCC) at (888) 877-7267.

Responders need a raft or kayak to reach the river-left shoreline.

Resources-At-Risk

Ecological: fisher – Western DPS, Bald Eagle, Osprey, Foothill Yellow-legged Frog, thread-leaved beardtongue, northern clarkia

Economic: Fishing guide services

Tribal: Contact the Native American Heritage Commission at (916) 373-3710.

Cultural and Historic: Contact the Northeast Information Center at (530) 898-6256.

Site Description and Field Notes

River Width: 27 meters
(90 feet)

Gradient: Medium

Site Location/Segment: SAC-SH-A-055

Elevation at the site is 1,218 feet above MSL.

Site Contact/s:

UPRR RMCC
(888) 877-7267

Vehicular Access: All vehicle types can access this location.

Recreational Use: Fishing, rafting/kayaking, water-contact.

Boat Launches: Use shoreline for launching rafts or kayaks. There are no boat ramps along the upper Sacramento River between Box Canyon Dam and Lake Shasta (Divisions SAC-SK-A and SAC-SH-A).

ESI Shoreline Type: Exposed rocky banks (1A); Rocky shoals, bedrock ledges (2A); Vegetated, steeply sloping bluffs (8F); Vegetated low banks (9B).

Site Images



Upstream



Downstream



Straight Across

RR = River-Right RL = River-Left

Photo Date: 09/19/2017

Site Objectives: Deflection boom and product collection.

Implementation: Set 350 feet of swiftwater boom starting upstream of the response site on the river-left shore and deflect floating product to an eddy on the river-right shore at the response site. Use excess boom to protect shoreline at collection area. Collect product using skimmer and pump uphill to holding tank(s). Consider setting up high-line boom formation.

Staging Area Location and Capabilities/Amenities/Waste Management: There is sufficient space available along the UPRR right-of-way and under the I-5 overpass out to Moine Road for staging response assets.

Response Strategy Map (overview)

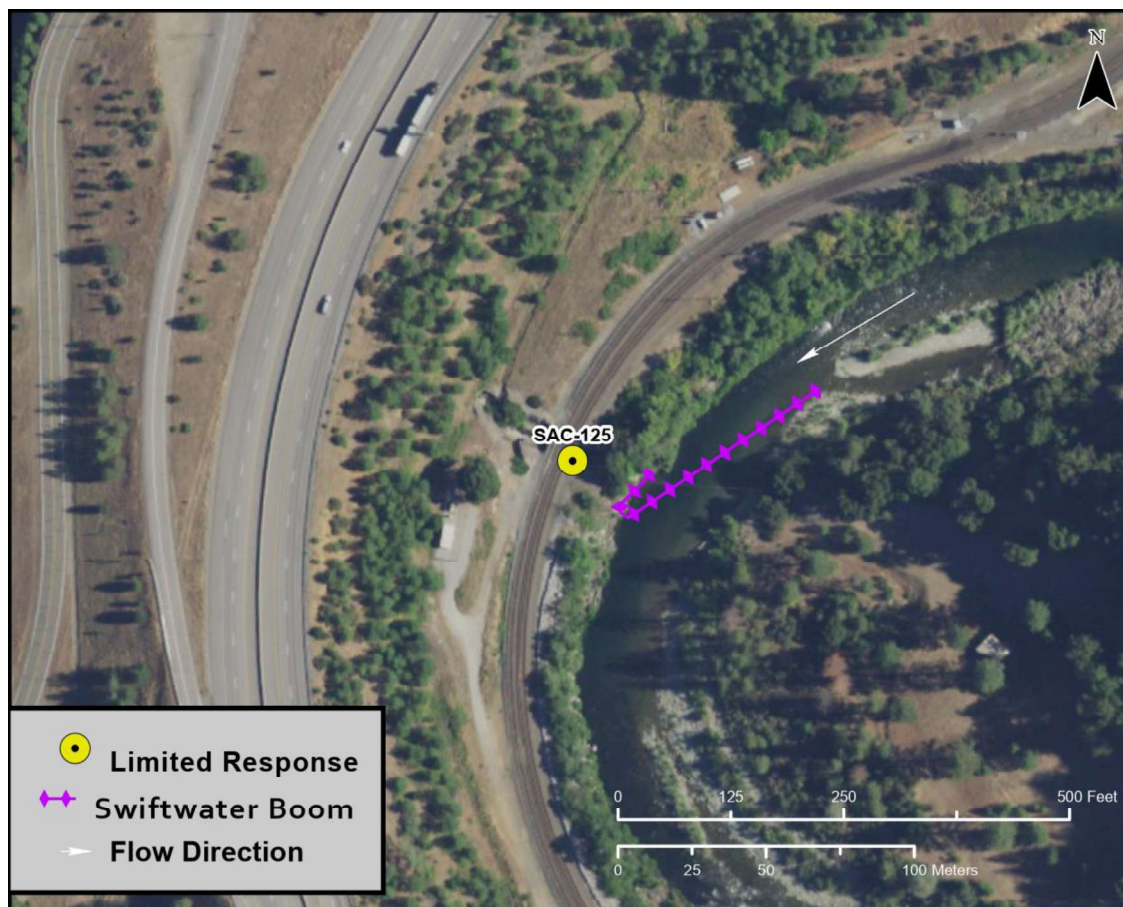


Table of Response Resources

Type	Sub-Type	Size	Unit	QTY - Unit	Special Equipment or Comments
Boom	Sorbent	5 to 8	inch	600 feet	
Boom	Swiftwater	8 to 12	inch	350 feet	
Skimmer	Disc, Drum, or Weir			1	
Pumps	High Speed			2	
Storage Tank		20,000	gallon	5	
Vacuum Truck		70	bbl	1	
Pads and Sweep	Sorbent		bale	40	
Personnel				6 to 8 crew	