

Latitude: N 40.99599
Longitude: W -122.41316

Driving Directions

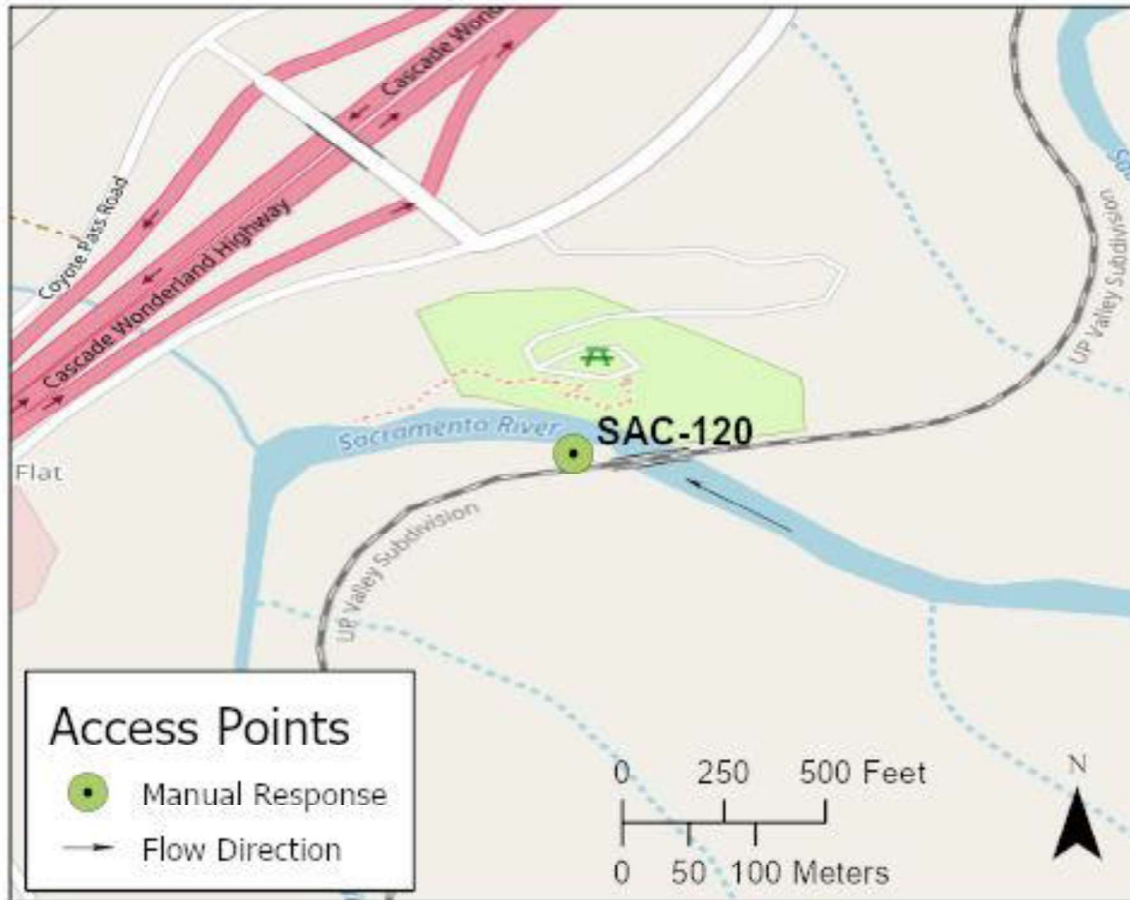
Highway Post Mile: N/A

Take the Pollard Flat exit off I-5, Exit #712, and head east to Eagles Roost Road. The signed access point to the Pollard Gulch Fishing Access is located immediately northeast of the intersection at Eagles Roost Road. Follow paved road down to a parking area at the fishing access.

Railroad Milepost: UPRR 302.24 – Valley Subdivision

Nearest Address and Thomas Guide #:
N/A

Cell Service: Yes – Verizon tested

Overview Street Map**Hazards, Restrictions and Advice for Responders**

There is a UPRR bridge over the Sacramento River immediately upstream of the main fishing access point (down the stairs to the river). Responders wanting to access the river-left shoreline may need to cross this bridge. Coordinate any activities around the tracks with UPRR Response Management Communications Center (RMCC) at (888) 877-7267.

The velocity of the river is medium at the observation site and probably too swift for deploying boom. There is a small eddy on the river-right shoreline at the observation site. Shoreline cleanup is possible at various areas up and downstream of the fishing access.

Resources-At-Risk

Ecological: fisher – West Coast DPS, Bald Eagle, Osprey, thread-leaved beardtongue, northern clarkia, Indian Valley brodiaea

Economic: Fishing guide services

Tribal: Contact the Native American Heritage Commission at (916) 373-3710.

Cultural and Historic: Contact the Northeast Information Center at (530) 898-6256.

Site Description and Field Notes

River Width: 26 meters
(85 feet)

Gradient: Medium

Site Contact/s:
USDA Forest Service
Shasta-Trinity National
Forest

24-Hour Dispatch
(530) 226-2400
(530) 226-2499

UPRR RMCC
(888) 877-7267

Site Location/Segment: SAC-SH-A-050

There are restrooms located in the parking area.

Vehicular Access: Passenger vehicles and work trucks can access this site.

Recreational Use: Fishing, rafting/kayaking, water-contact.

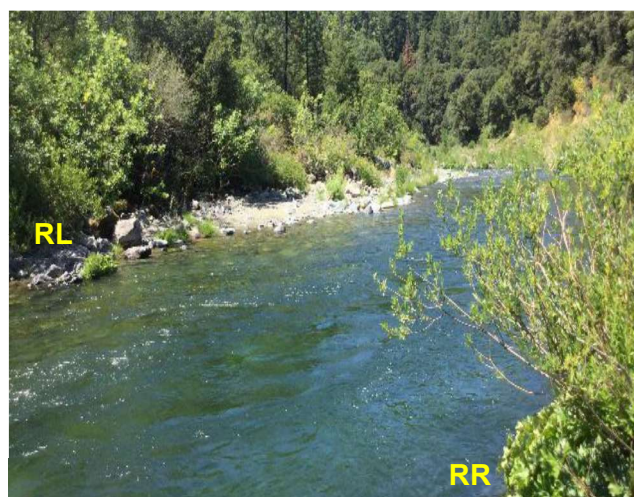
Boat Launches: Use shoreline for launching rafts or kayaks. There are no boat ramps along the upper Sacramento River between Box Canyon Dam and Lake Shasta (Divisions SAC-SK-A and SAC-SH-A).

ESI Shoreline Type: Exposed rocky banks (1A); Exposed solid man-made structures (1B); Vegetated steeply sloping bluffs (8F).

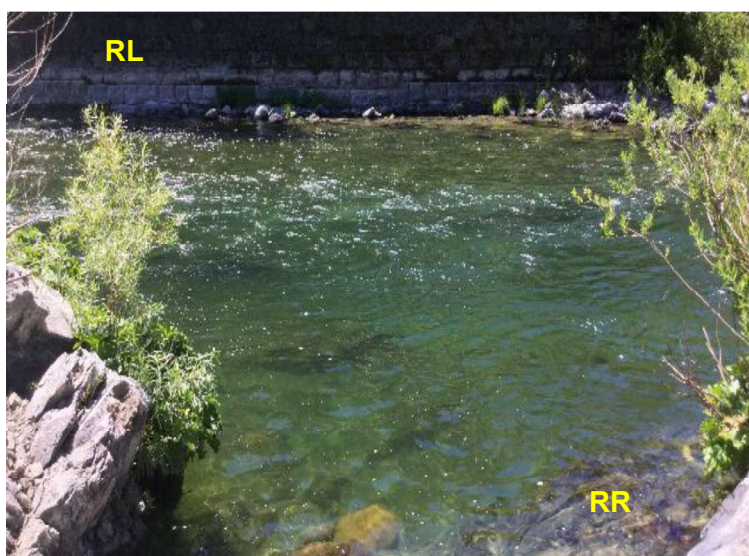
Site Images



Upstream



Downstream



Straight Across

RR = River-Right RL = River-Left

Photo Date: 07/20/2017

Site Objectives: Manual shoreline cleanup site.

Implementation: Response crews can access various areas of shoreline upstream and downstream of the main fishing access point. Remove oiled debris and clean shoreline with sorbents or other methods approved by the Unified Command.

Staging Area Location and Capabilities/Amenities/Waste Management: The fishing access parking area is large enough for several work trucks to park and also store 1 or 2 waste storage bins.

Response Strategy Map (overview)

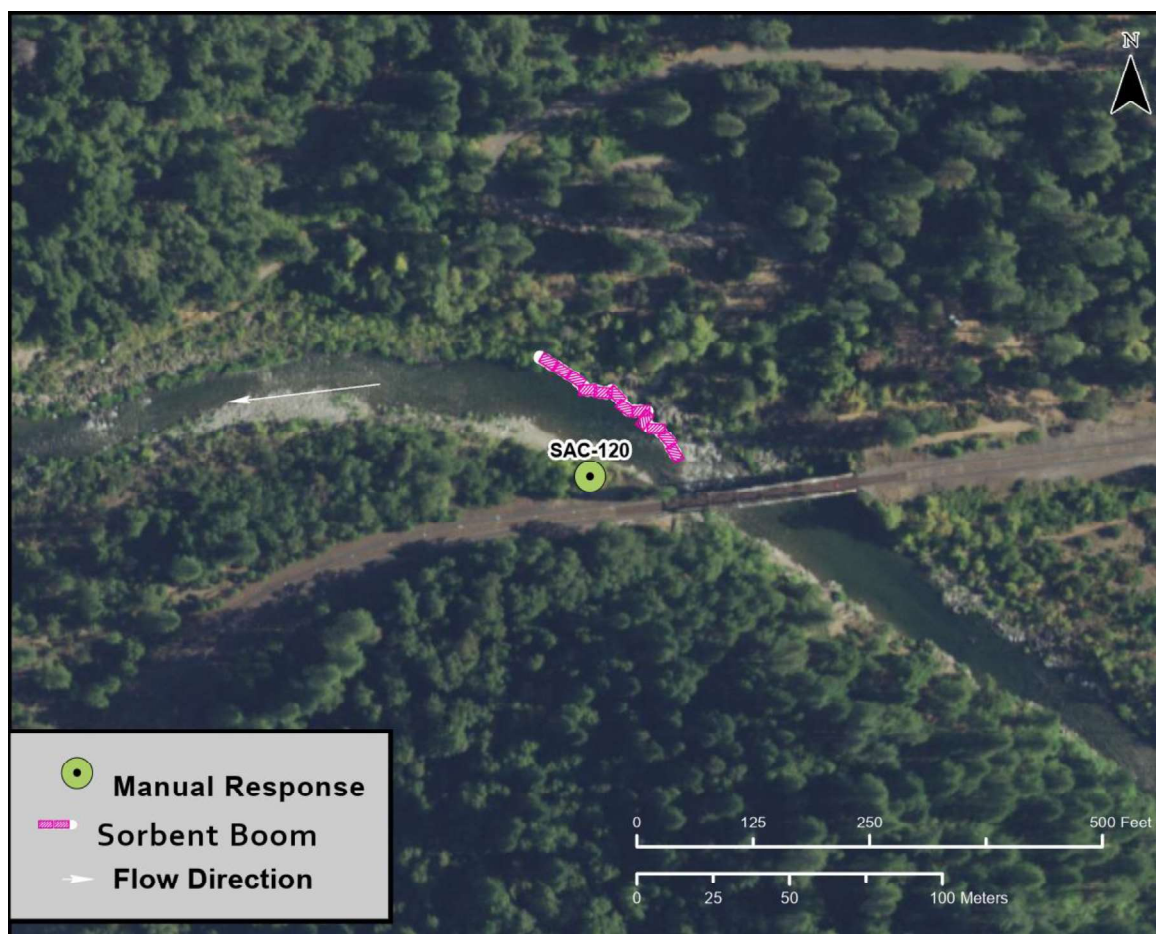


Table of Response Resources

Type	Sub-Type	Size	Unit	QTY - Unit	Special Equipment or Comments
Boom	Sorbent	5 to 8	inch	400 feet	
Pads and Sweep	Sorbent		bale	60	
Personnel				4 to 6 crew	
Waste Storage Bins		20	yard	1	