

Latitude: N 40.99933
Longitude: W -122.40556

Driving Directions

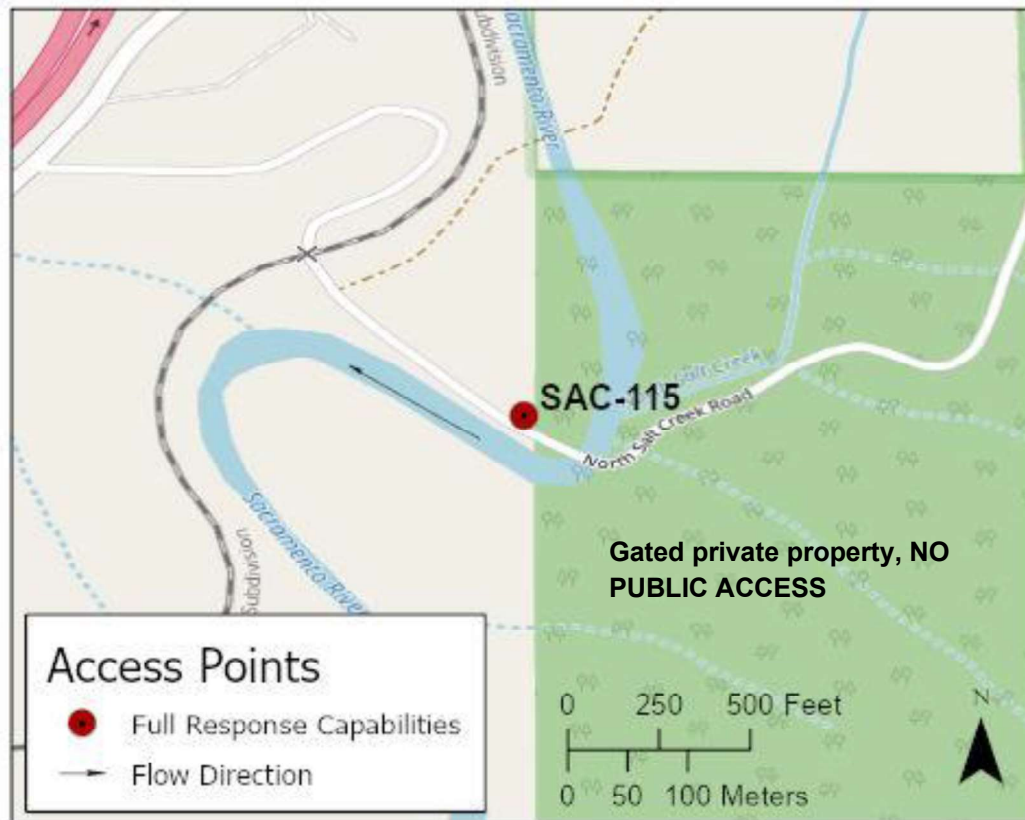
Highway Post Mile: N/A

Railroad Milepost: UPRR 302.80 –
Valley Subdivision

Nearest Address and Thomas Guide #:
N/A

Cell Service: Yes –Verizon tested

Take the Pollard Flat exit, Exit #712, off I-5. Head east to Eagles Roost Road. Turn north onto Eagles Roost Road and travel about 1/3 mile to a yellow pipe gate and an unmarked paved road on the east side of Eagles Roost Road. This road shows up on maps as North Salt Creek Road. Follow road down and continue over the UPRR track crossing to the bridge over the Sacramento River. Response site is located beneath the bridge.

Overview Street Map**Hazards, Restrictions and Advice for Responders**

This site is gated private property. Access is controlled by Sierra Pacific Industries (SPI). There is a second gate on the west side of the bridge over the Sacramento River that is also controlled by SPI. **There is no public access to this site.** A permit is required from SPI for any non-emergency access.

UPRR also has access to this site. UPRR track crossing #411932G is located on the west side of the river.

Logging trucks use this bridge during timber harvest operations. Traffic control procedures may need to be coordinated with timber harvest companies.

Elevation at this site is 1,320 feet above MSL.

Resources-At-Risk

Ecological: fisher – West Coast DPS, Bald Eagle, Osprey, thread-leaved beardtongue

Economic: Timber harvest operations, fishing guide services.

Tribal: Contact the Native American Heritage Commission at (916) 373-3710.

Cultural and Historic: Contact the Northeast Information Center at (530) 898-6256.

Site Description and Field Notes

River Width: 18 meters
(60 feet)

Gradient: Medium to low

Site Contact/s:

Sierra Pacific Industries
Nick Kroencke (530) 356-1292

UPRR RMCC
(888) 877-7267

Site Location/Segment: SAC-SH-A-045

There is a slow deep pool in the Sacramento River under and immediately downstream of the bridge. North Salt Creek enters the Sacramento River on the river-left shoreline about 150 feet upstream of the bridge.

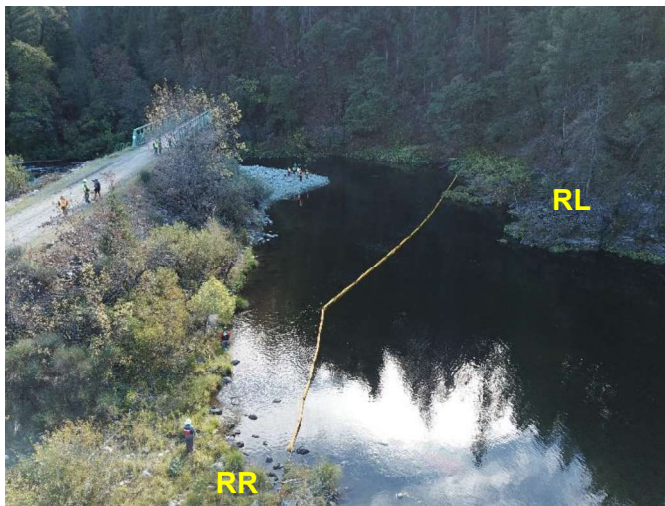
Vehicular Access: All vehicle types can access this site. However, a 4wd high clearance vehicle is needed to drive to the upper area of the gravel bar beneath the bridge.

Recreational Use: Fishing, rafting/kayaking, water contact.

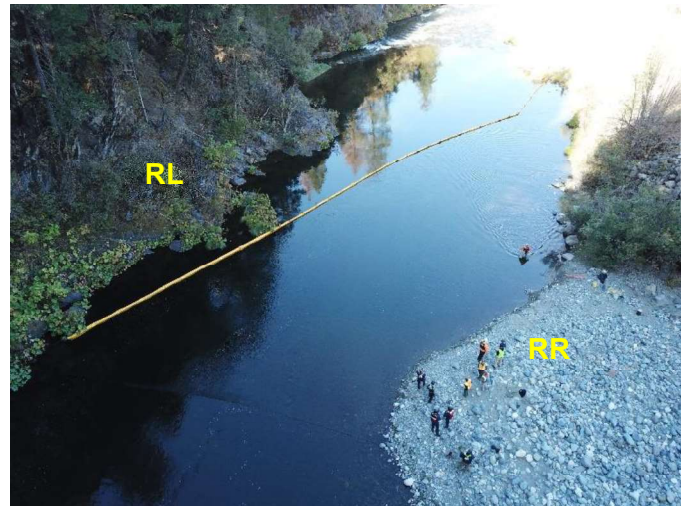
Boat Launches: Use shoreline for launching rafts or kayaks. There are no boat ramps along the upper Sacramento River between Box Canyon Dam and Lake Shasta (Divisions SAC-SK-A and SAC-SH-A).

ESI Shoreline Type: Exposed rocky banks (1A); Exposed, solid man-made structures (1B); Rocky shoals and bedrock ledges (2A); Vegetated, steeply sloping bluffs (8F); Vegetated low banks (9B).

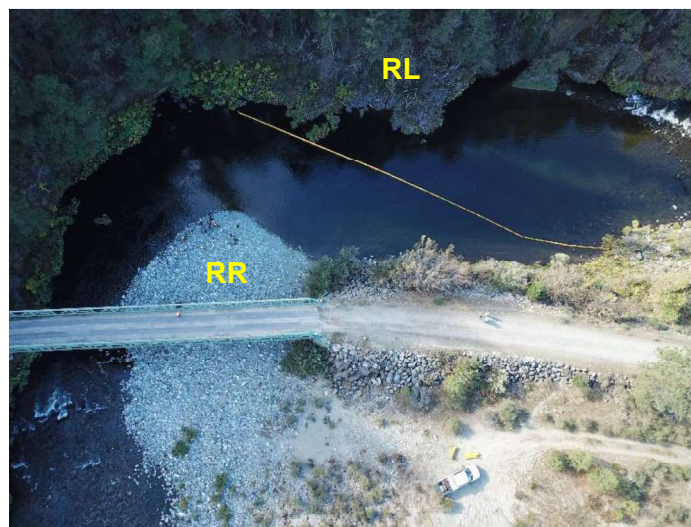
Site Images



Upstream



Downstream



Straight Across/Overhead

RR = River-Right RL = River-Left

Photo Date: 10/10/2018

Site Objectives: Deflection boom and product collection.

Implementation: This strategy has been tested: At low river flows, deflect floating product to eddy on river-right shoreline downstream of North Salt Creek Road bridge. Deploy 400 feet of swift water boom below bridge at bend in river from river-left shoreline to bottom of eddy on the river-right shoreline below the bridge. Use excess boom to protect shoreline at collection area. Collect product using skimmer and pump recovered oil to vacuum truck on the road above the river.

Staging Area Location and Capabilities/Amenities/Waste Management: Large equipment staging area is located adjacent to UPRR tracks on the west side of river. This area is also sufficient for managing waste recovery operations.

Response Strategy Map (overview)

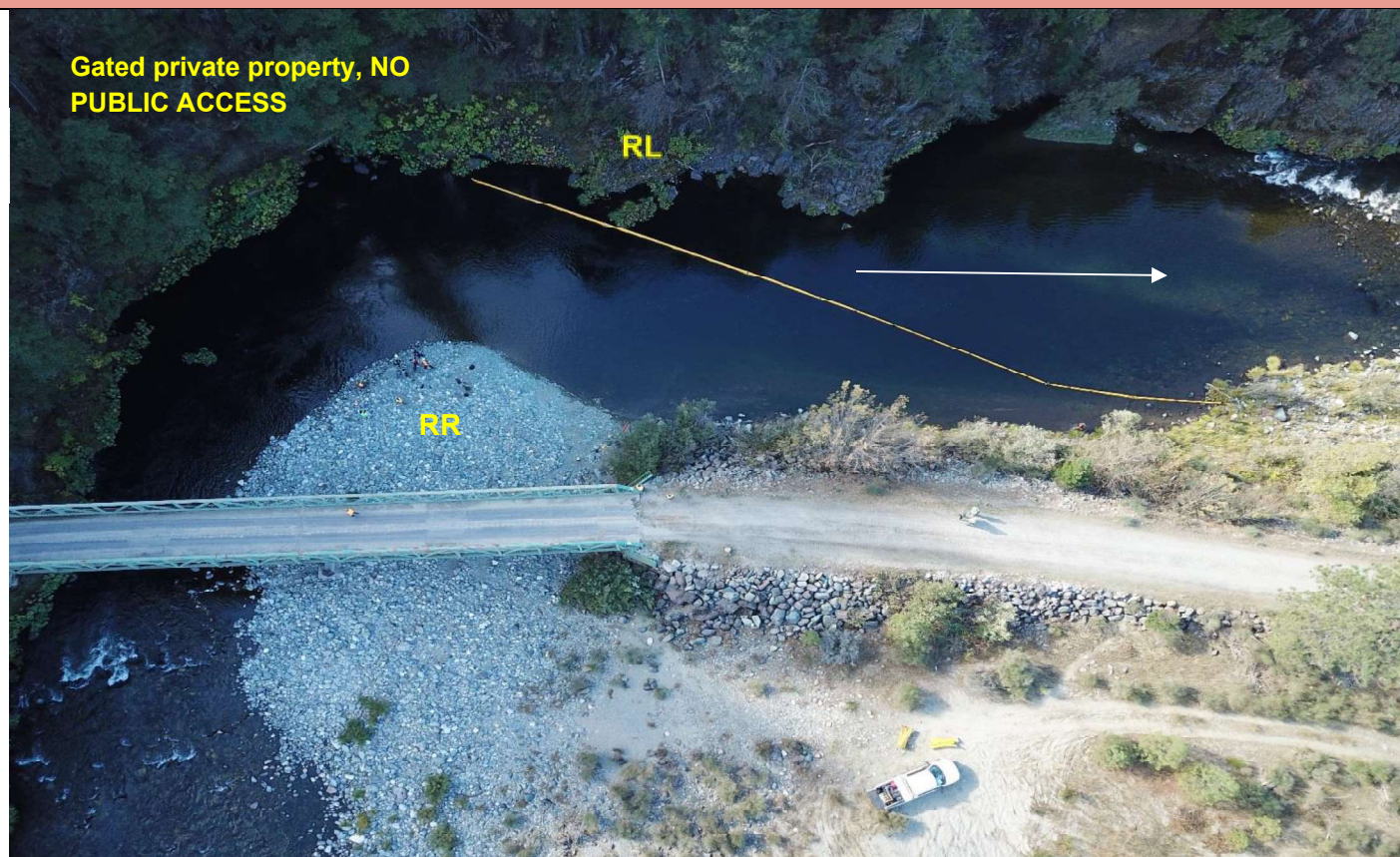


Table of Response Resources

Type	Sub-Type	Size	Unit	QTY - Unit	Special Equipment or Comments
Boom	Sorbent Boom	5 to 8	inch	800-1000 feet	
Boom	Swift Water Boom	8 to 12	inch	400 feet	
Skimmer	Disc, Drum, or Weir			1	
Pump	High Speed			1	
Storage Tank		20,000	gallon	5	
Vacuum Truck		120	bbl	1	
Pads and Sweep	Sorbent		bale	40	
Personnel				6 to 8 crew	