

**Latitude:** N 41.044272  
**Longitude:** W -122.390134

**Driving Directions**

**Highway Post Mile:** N/A

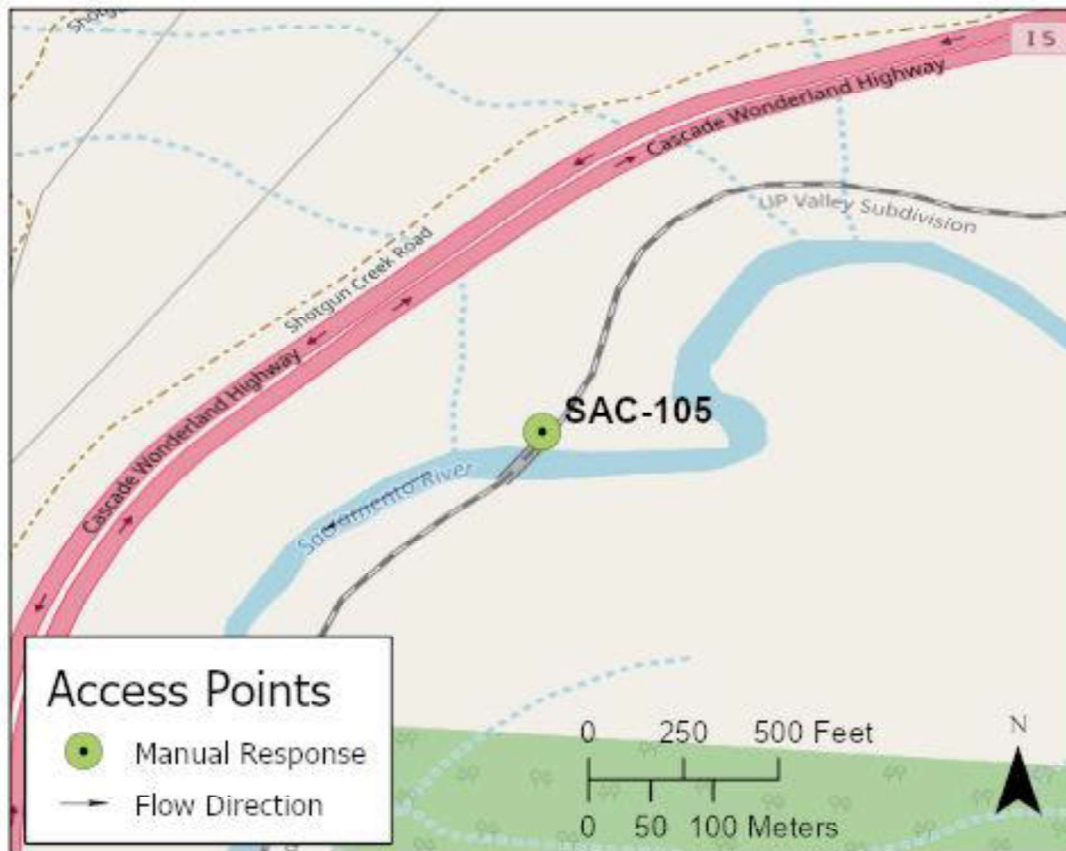
This site is only accessible by vehicle from NB I-5. Take unmarked dirt road 1.25 miles north of Gibson Road (Exit #714) on east side of NB I-5. Follow rough dirt road down to UPRR tracks. Park uphill of tracks.

**Railroad Milepost:** UPRR 306.72 – Valley Subdivision

Best way to bring equipment and personnel into this site is through coordination with UPRR utilizing their tracks.

**Nearest Address and Thomas Guide #:** N/A

**Cell Service:** Yes – Verizon tested

**Overview Street Map****Hazards, Restrictions and Advice for Responders**

Best way to access this site is via the UPRR tracks. Coordinate with UPRR to bring equipment and personnel to the site using rail cars or high rail vehicles. Contact UPRR Response Management Communications Center (RMCC) at (888) 877-7267.

Response site is on east side of UPRR tracks, upstream of UPRR bridge. Follow hiking trail to gravel bar on river-right shoreline. Response site extends upstream around bend in river.

Responders need a raft or kayak to reach the river-left shoreline. At very low river flows, it may be possible to cross the river using waders.

**Resources-At-Risk**

**Ecological:** Bald Eagle, Osprey, Western Pond Turtle, thread-leaved beardtongue

**Economic:** Fishing guide services

**Tribal:** Contact the Native American Heritage Commission at (916) 373-3710.

**Cultural and Historic:** Contact the Northeast Information Center at (530) 898-6256.

## Site Description and Field Notes

**River Width:** 27 meters  
(90 feet)

**Gradient:** Low to medium

**Site Location/Segment:** SAC-SH-A-035

Elevation at site is 1,530 feet above MSL.

**Site Contact/s:**

UPRR RMCC  
(888) 877-7267

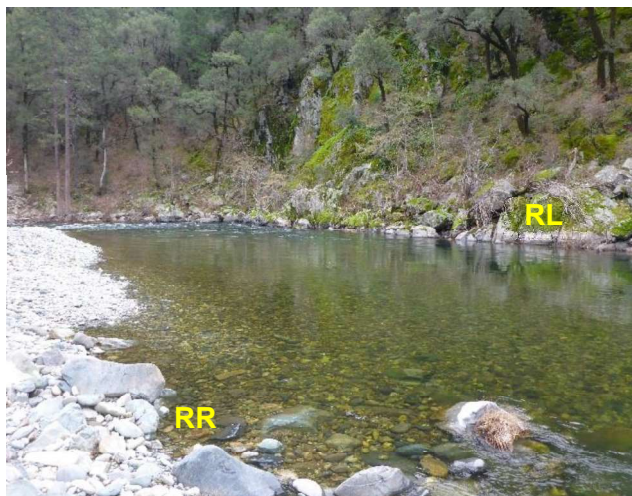
**Vehicular Access?** Need 4wd vehicle to access this site via the unmarked dirt road off NB I-5.

**Recreational Use?** Fishing, rafting/kayaking, water-contact.

**Boat Launches:** Use shoreline for launching rafts or kayaks. There are no boat ramps along the upper Sacramento River between Box Canyon Dam and Lake Shasta (Divisions SAC-SK-A and SAC-SH-A).

**ESI Shoreline Type:** Exposed rocky banks (1A); Gravel bars and gently sloping banks (6A); Vegetated, steeply sloping bluffs (8F); Vegetated low banks (9B).

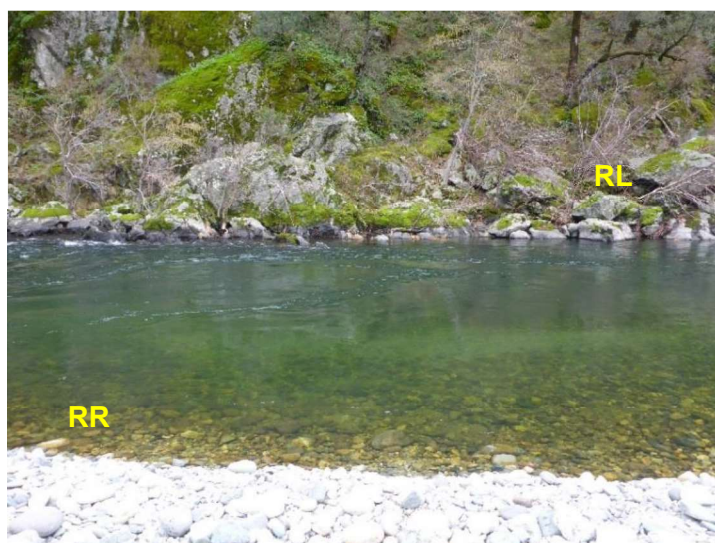
## Site Images



Upstream



Downstream



Straight Across

RR = River-Right RL = River-Left

Photo Date: 01/29/2018

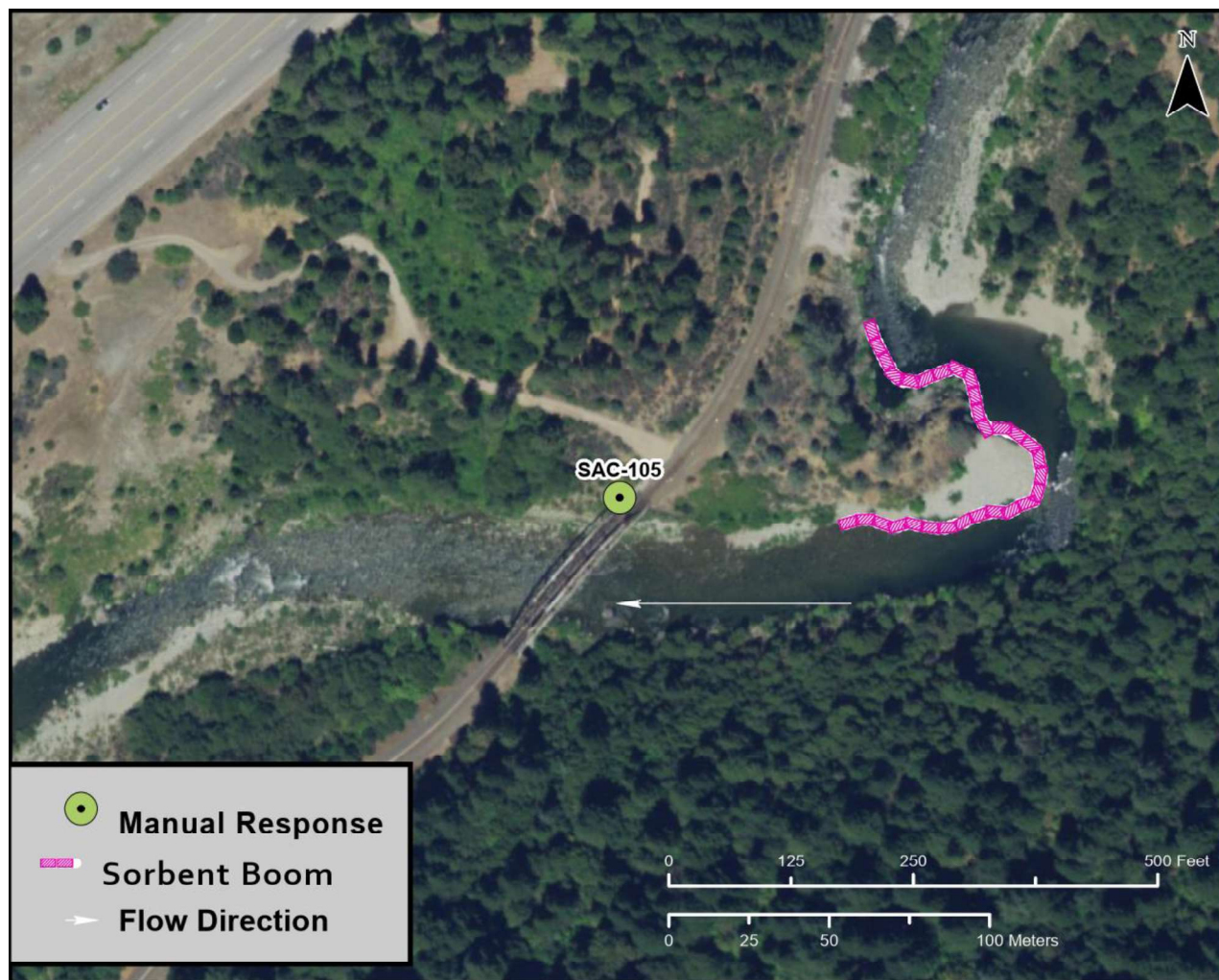


**Site Objectives:** Manual shoreline cleanup site.

**Implementation:** Response crews need to carry boom and equipment down to the river from UPRR tracks. Deploy sorbent boom to collect product in slow water eddies along river-right shoreline. Manually clean impacted shoreline with additional sorbent pads.

**Staging Area Location and Capabilities/Amenities/Waste Management:** Best location to stage equipment and personnel is at the Sims Road bridge, about 2.5 miles upstream of this location.

### Response Strategy Map (overview)



**Table of Response Resources**

Type	Sub-Type	Size	Unit	QTY - Unit	Special Equipment or Comments
Boom	Sorbent Boom	5 to 8	inch	500 feet	
Pads and Sweep	Sorbent		bale	60	
Personnel				4 to 6 crew	
Waste Storage Bin		20	yard	1	Bring in on rail flat car