



Latitude: N 41.06432
Longitude: W -122.36011

Driving Directions

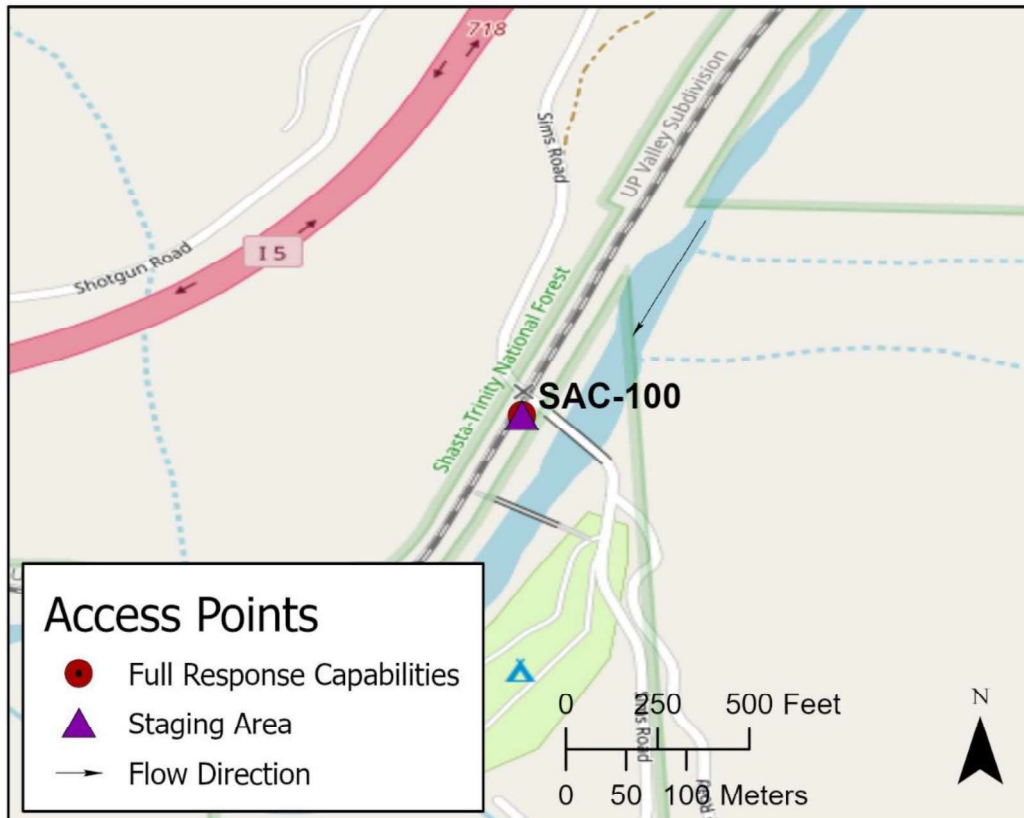
Highway Post Mile: N/A

Take the Sims Road exit, Exit #718, off I-5. On the east side of I-5, follow Sims Road southeast to the Sacramento River. Response site is at the Sims Road bridge.

Railroad Milepost: UPRR 309.16 – Valley Subdivision

Nearest Address and Thomas Guide #:
N/A

Cell Service: Yes – Verizon tested

Overview Street Map**Hazards, Restrictions and Advice for Responders**

UPRR rail crossing #750539V is located on the west side of the river at milepost 309.16 of the Valley Subdivision.

The primary response site is under the Sims Road bridge. There is also a USFS footbridge located about 100 yards downstream of the Sims Road bridge that can be used as a secondary response site. Product collection will be challenging due to river flow velocity.

There are additional river access points via hiking trails along the river-right shoreline at the UPRR rail siding yard upstream of the Sims Road bridge. This siding can be accessed via a road leading north off Sims Road about 200 yards NW of the bridge. Consider additional boom deployment upstream of Sims Road bridge to slow product migration downstream.

Elevation at the site is 1,549 feet above MSL.

Resources-At-Risk

Ecological: Bald Eagle, Osprey, Foothill Yellow-legged Frog, Western Pond Turtle

Economic: Fishing guide services

Tribal: Contact the Native American Heritage Commission at (916) 373-3710.

Cultural and Historic: Contact the Northeast Information Center at (530) 898-6256.



Site Description and Field Notes

River Width: 44 meters
(145 feet)

Gradient: Medium

Site Contact/s:

USDA Forest Service
Shasta-Trinity National
Forest, 24-Hour Dispatch
(530) 226-2400
(530) 226-2499

UPRR RMCC
(888) 877-7267

Site Location/Segment: SAC-SH-A-030

NOTE: There are additional river access points from dirt roads off NB I-5 between Gibson Road and Sims Road.

USFS Sims Road Campground is located on the river-left shore starting at the footbridge.

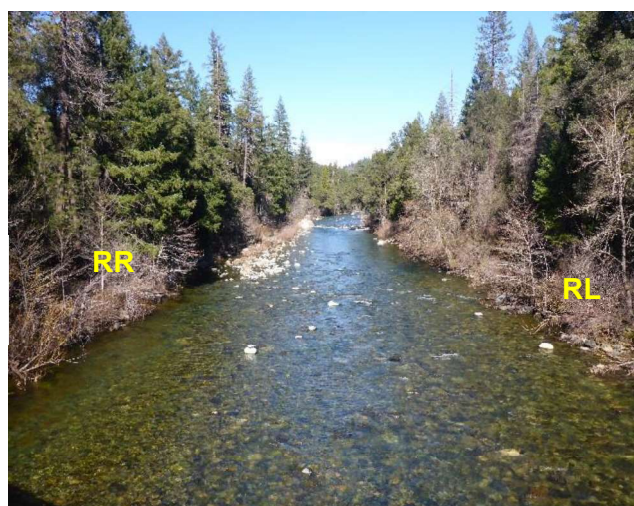
Vehicular Access: All vehicle types can access this location.

Recreational Use: Fishing, rafting/kayaking, water-contact.

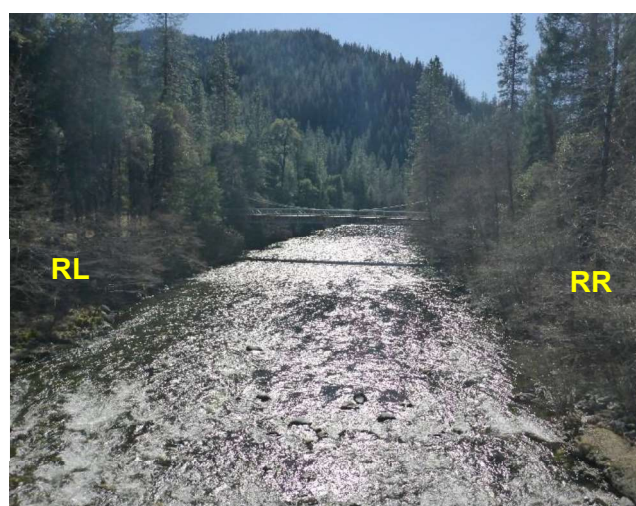
Boat Launches: Use shoreline for launching rafts or kayaks. There are no boat ramps along the upper Sacramento River between Box Canyon Dam and Lake Shasta (Divisions SAC-SK-A and SAC-SH-A).

ESI Shoreline Type: Exposed rocky banks (1A); Exposed, solid man-made structure (1B); Vegetated low banks (9B).

Site Images



Upstream



Downstream



Straight Across

RR = River-Right RL = River-Left

Photo Date: 02/23/2018



Site Objectives: Deflection boom and product collection.

Implementation: This strategy has been tested: At low river flows, deploy 500 feet of swift water boom from river-left shoreline above Sims Road Bridge to eddy on river-right shoreline under Sims Road Bridge. There will probably be some entrainment of product under this first boom set. For second more effective boom set, anchor boom at concrete structure on river-left shoreline below Sims Road Bridge and deploy 500 feet of swift water boom to small eddy on river-right shoreline downstream of the footbridge. Responders will have to cut a small access trail starting next to the UPRR tracks down through thick vegetation to the river to set up product collection area. Cut trail through blackberry bushes and attempt to avoid damage to native riparian vegetation. This second boom set should prove more effective at capturing floating product but it will take longer to set up than the first 500-foot boom set. The Response Strategy Map photo below shows the second more effective boom set.

Staging Area Location and Capabilities/Amenities/Waste Management: There is a large staging area on the west side of the Sacramento River. This area will support a 120-bbl vacuum truck.

Response Strategy Map (overview)



Table of Response Resources

Type	Sub-Type	Size	Unit	QTY - Unit	Special Equipment or Comments
Boom	Sorbent Boom	5 to 8	inch	2,000 feet	For deployment to collection points at both bridges.
Boom	Swift Water Boom	8 to 12	inch	1,000 feet	Additional swift water boom necessary if planning to deploy above Sims Road bridge.
Skimmer	Disc or Drum			1	
Storage Tank		20,000	gallon	5	
Vacuum Truck		120	bbl	1	
Pads and Sweep	Sorbent		bale	40	
Personnel				8 to 10 crew	