

**Latitude:** N 41.129944  
**Longitude:** W -122.319658

**Driving Directions**

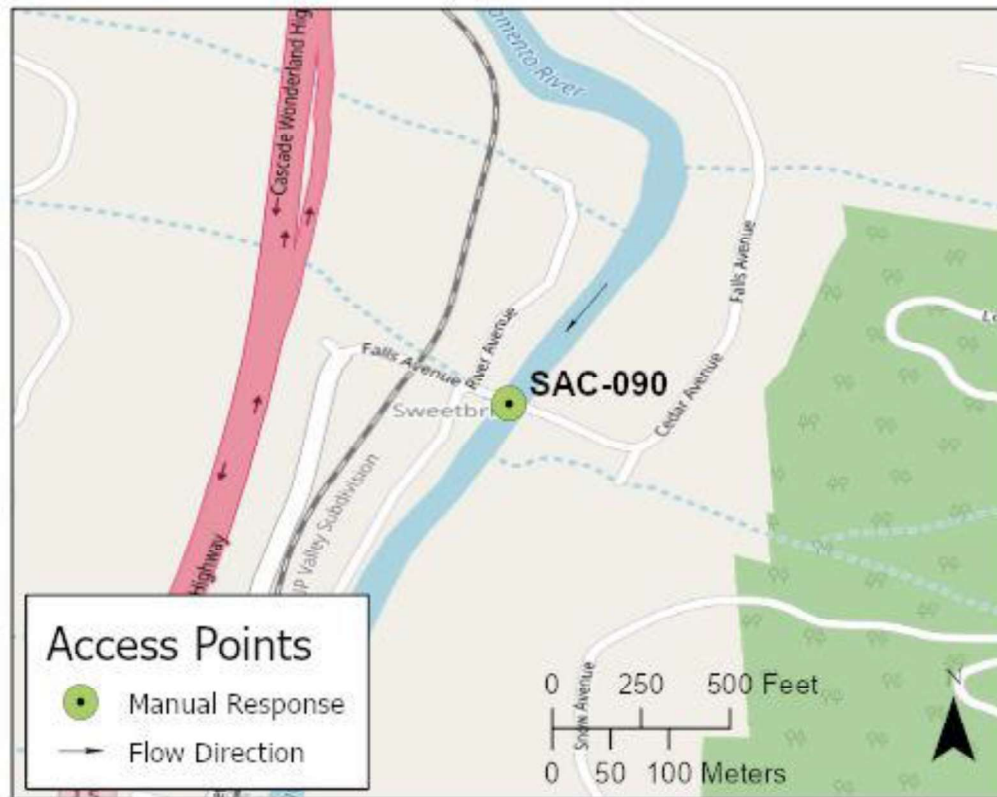
**Highway Post Mile:** N/A

**Railroad Milepost:** UPRR 314.72 –  
Valley Subdivision

Take the Sweetbriar Avenue exit off I-5, Exit #723. Head east on Sweetbriar Avenue and then follow the road north. Sweetbriar Avenue turns into Falls Avenue where the road turns east toward the Sacramento River. Park on the east side of the UPRR tracks in the railroad right-of-way. River-right shoreline access starts under the bridge over the Sacramento River.

**Nearest Address and Thomas Guide #:**  
N/A

**Cell Service:** Yes – Verizon tested

**Overview Street Map****Hazards, Restrictions and Advice for Responders**

UPRR track crossing is located on the west side of the river.

This is a shoreline cleanup site that would be difficult to recover product at.

Private residences line both shorelines above the bridge over the Sacramento River, and the river-right shoreline below the bridge. There is additional water access at a small beach located upstream of the bridge on the river-left shoreline that is accessible by foot.

NOTE: There is a dirt road on the east side of the NB I-5 Sweetbriar Avenue off ramp that leads to the UPRR tracks and additional water access points.

**Resources-At-Risk**

**Ecological:** fisher- West Coast DPS, Bald Eagle, Osprey, Foothill Yellow-legged Frog, Coastal-tailed Frog

**Economic:** Fishing guide services

**Tribal:** Contact the Native American Heritage Commission at (916) 373-3710.

**Cultural and Historic:** Contact the Northeast Information Center at (530) 898-6256.

## Site Description and Field Notes

**River Width:** 30 meters  
(100 feet) under the bridge

**Gradient:** Low to Medium

**Site Contact/s:**

UPRR RMCC  
(888) 877-7267

**Site Location/Segment:** SAC-SH-A-020

Sweetbriar is a small community with vacation homes and some year-round residents. Roads are very narrow.

**Vehicular Access:** Most vehicle types can access the UPRR track crossing on the west side of the river. Travel beyond this point will be primarily by foot.

**Recreational Use:** Fishing, rafting/kayaking, water-contact.

**Boat Launches:** Use shoreline for launching rafts or kayaks. There are no boat ramps along the upper Sacramento River between Box Canyon Dam and Lake Shasta (Divisions SAC-SK-A and SAC-SH-A).

**ESI Shoreline Type:** Exposed rocky banks (1A); Exposed solid man-made structure (1B); Vegetated steeply sloping banks (8F).

## Site Images



Upstream



Downstream



Straight Across

RR = River-Right RL = River-Left

Photo Date: 07/21/2017

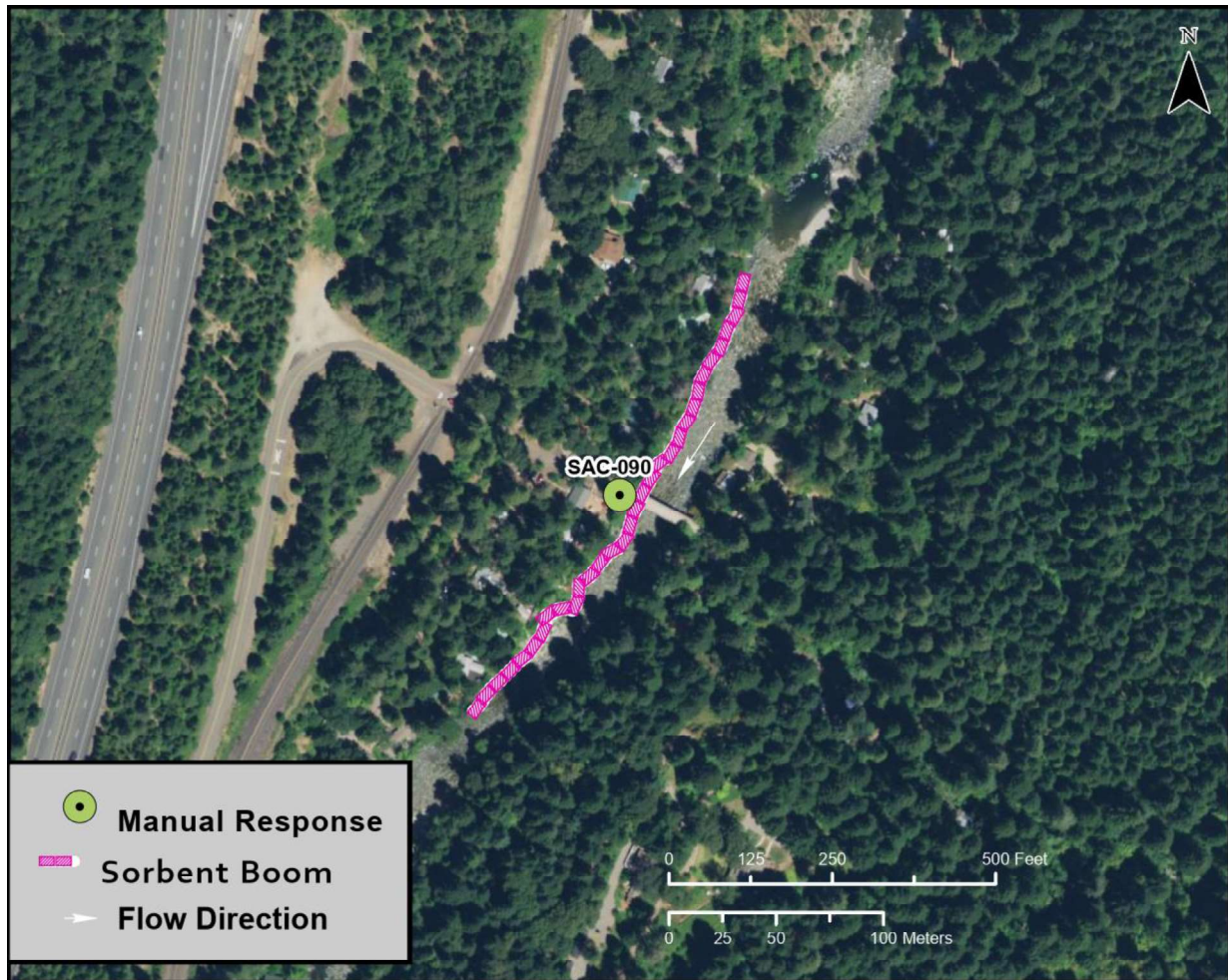


**Site Objectives:** Manual shoreline cleanup site.

**Implementation:** Responders can access the river-right shoreline beneath the bridge to begin shoreline cleanup with sorbents. Contact local residents for work below the houses lining the shorelines.

**Staging Area Location and Capabilities/Amenities/Waste Management:** Stage equipment along UPRR right-of-way. Contact UPRR Response Management Communications Center (RMCC) at (888) 877-7267.

### Response Strategy Map (overview)



**Table of Response Resources**

Type	Sub-Type	Size	Unit	QTY - Unit	Special Equipment or Comments
Boom	Sorbent Boom	5 to 8	inch	800 feet	
Pads and Sweep	Sorbent		bale	60	
Personnel				4 to 6 crew	
Waste Storage Bin		20	yard	1	