



Latitude: N 41.14938
Longitude: W -122.30805

Driving Directions

Highway Post Mile: N/A

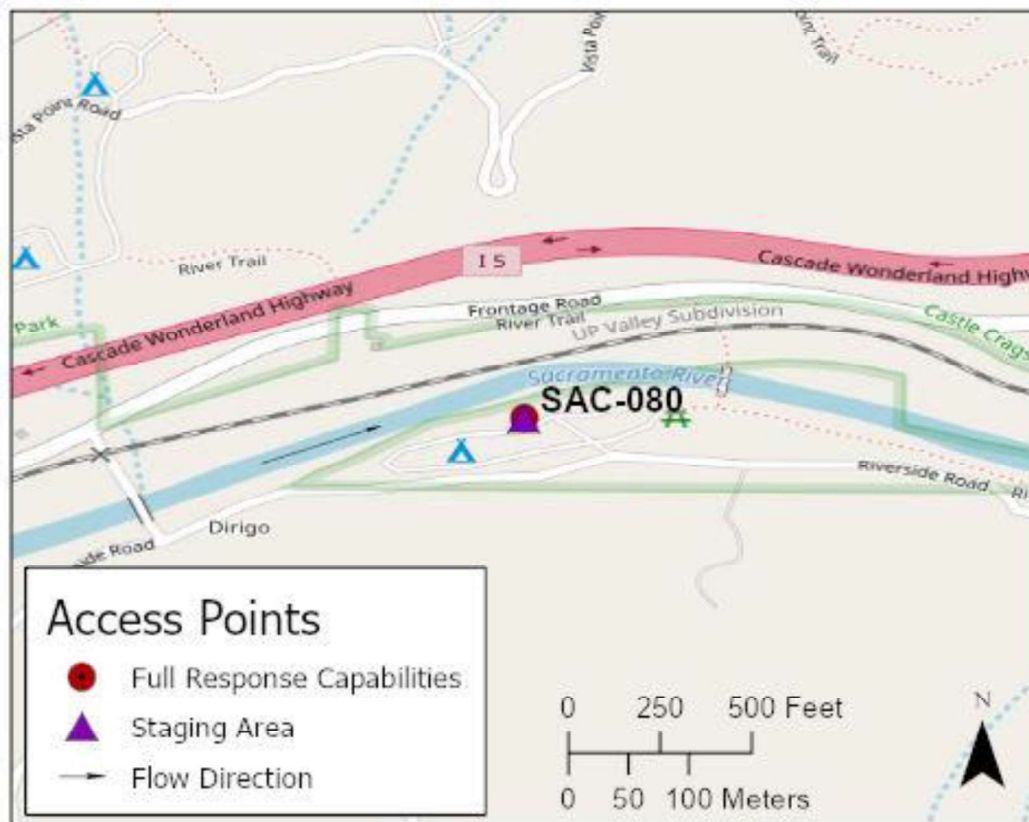
Railroad Milepost: UPRR 316.42 –
Valley Subdivision

Take the Castella exit, Exit #724, off I-5 and head east on Castle Creek Road. Turn north onto Main Street/Frontage Road on east side of I-5. Turn east onto Riverside Drive and cross the UPRR tracks and the Sacramento River. Continue north on Riverside Drive and enter the Castle Craggs State Park Picnic Area and Campground. Campsite #5 at the south end of the campground is a good boom deployment location.

Nearest Address and Thomas Guide #:
N/A

Cell Service: Yes – Verizon tested

Overview Street Map



Hazards, Restrictions and Advice for Responders

Park entrance is locked during winter months.

Campsite #5 at the south end of the park is a good boom deployment location at lower river velocities. During higher flows, areas below campsite #11 may be best for deploying boom.

UPRR tracks run above the river-right shoreline. Coordinate with UPRR RMCC at (888) 877-7267 if trying to access the river-right shoreline from the tracks. UPRR track crossing #750543K is located on the west side of the Riverside Drive bridge.

There is also a footbridge approximately 100 yards upstream of the picnic area/campground parking lot that provides access to the river-right shoreline. Elevation at this site is 2,056 feet above MSL.

Resources-At-Risk

Ecological: fisher – West Coast DPS, Bald Eagle, Osprey, Foothill Yellow-legged Frog, Cascade Frog, Coastal-tailed Frog, Castle Craggs harebell

Economic: Local tourism, fishing guide services

Tribal: Contact the Native American Heritage Commission at (916) 373-3710.

Cultural and Historic: Contact the Northeast Information Center at (530) 898-6256.



Site Description and Field Notes

River Width: 24 Meters
(80 feet)

Gradient: Medium to low

Site Contact/s:

Castle Crags State Park
Entrance: (530) 235-2684
(Open April 1 – October 31)

NORCOM Dispatch
(916) 358-1310

Site Location/Segment: SAC-SH-A-010

Riverside Drive on the east side of the Sacramento River is a narrow winding road, but there is additional river-left shoreline access from this road. Turnouts for parking are very limited along this road.

Vehicular Access: All vehicle types can access this location.

Recreational Use: Camping, fishing, rafting/kayaking, water-contact.

Boat Launches: Use shoreline for launching rafts or kayaks. There are no boat ramps along the upper Sacramento River between Box Canyon Dam and Lake Shasta (Divisions SAC-SK-A and SAC-SH-A).

ESI Shoreline Type: Exposed rocky banks (1A); Rocky shoals and bedrock ledges (2A); Vegetated steeply sloping banks (8F); Vegetated low banks (9B).

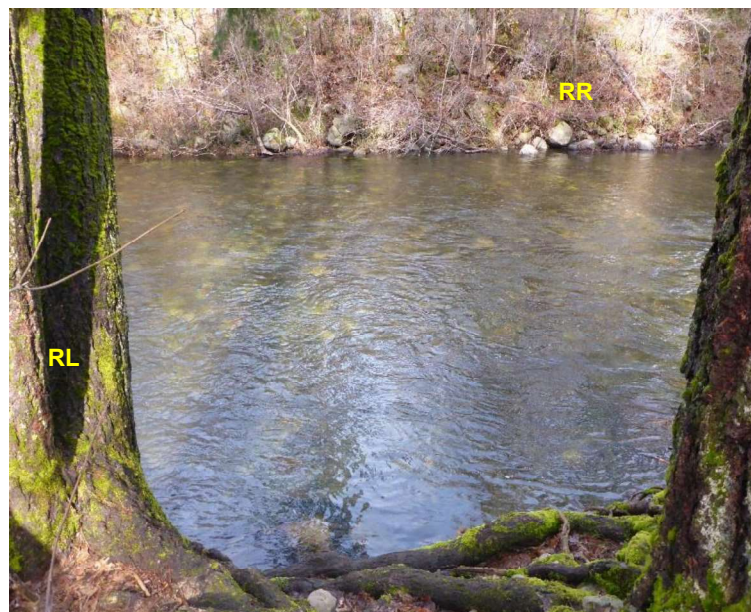
Site Images



Upstream



Downstream



Straight Across

RR = River-Right RL = River-Left

Photo Date: 01/29/2018



Site Objectives: Deflection boom and product collection.

Implementation: Set 350 feet of swift water boom from river-right shoreline and deflect floating product toward eddy at campsite #5 at the south end of the campground. Use excess boom to protect shoreline at collection area. Consider deploying a secondary boom set if oil entrains under primary boom set. Recover product using skimmer and transfer to a vacuum truck. At higher river velocities, areas below campsite #11 may be better suited for deploying boom.

Staging Area Location and Capabilities/Amenities/Waste Management: Stage equipment and manage wastes from the State Park campground and picnic area. Additional staging area is located at the Castle Crags State Park facilities on the west side of Sacramento River and I-5.

Response Strategy Map (overview)

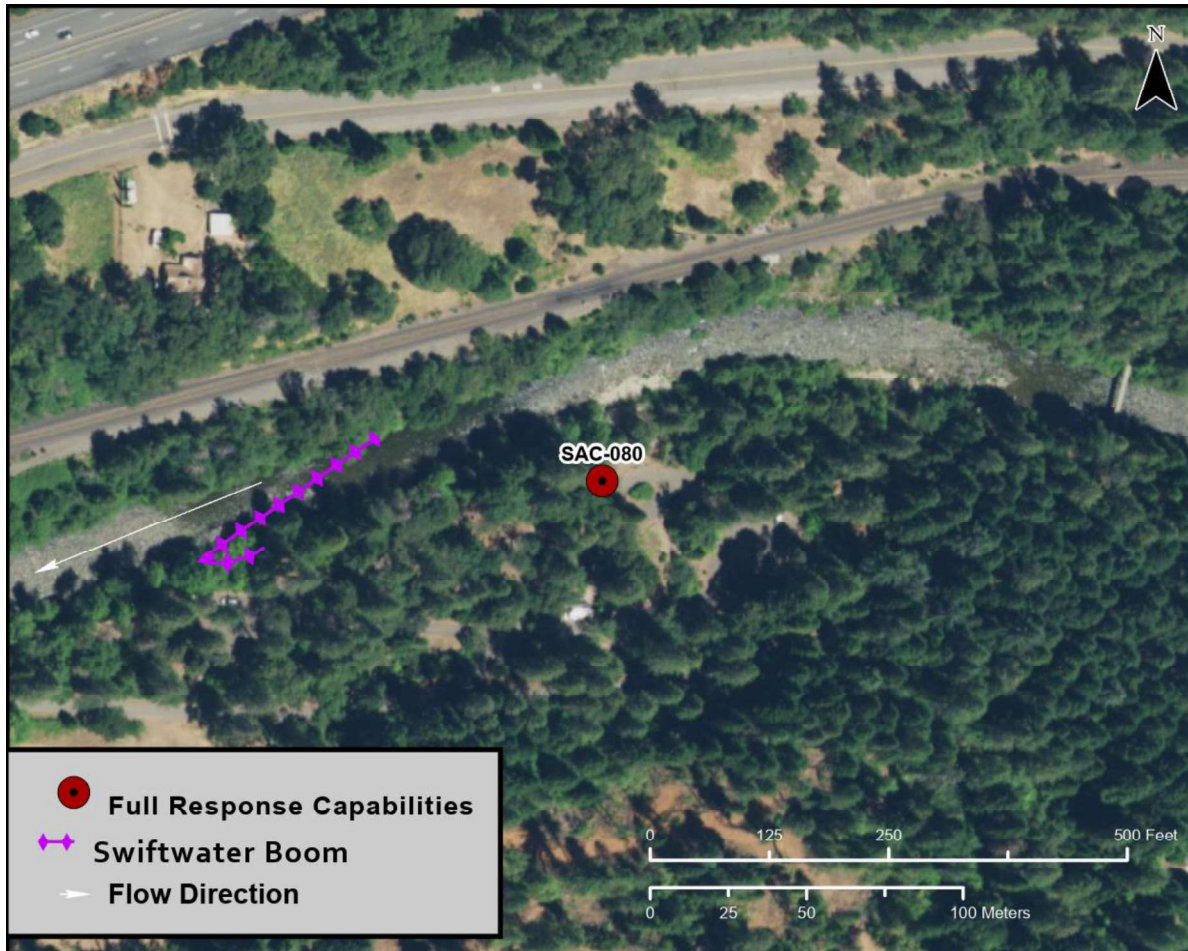


Table of Response Resources

Type	Sub-Type	Size	Unit	QTY - Unit	Special Equipment or Comments
Boom	Sorbent Boom	5 to 8	inch	600 feet	
Boom	Swift Water Boom	8 to 12	inch	350 feet	Need 700 feet of boom if deploying a primary and secondary boom set.
Skimmer	Disc or Drum			1	
Storage Tank		20,000	gallon	5	
Vacuum Truck		70	bbl	1	
Pads and Sweep	Sorbent		bale	40	
Personnel				6 to 8 crew	