

**Latitude:** N 41.16047  
**Longitude:** W -122.29416

**Driving Directions**

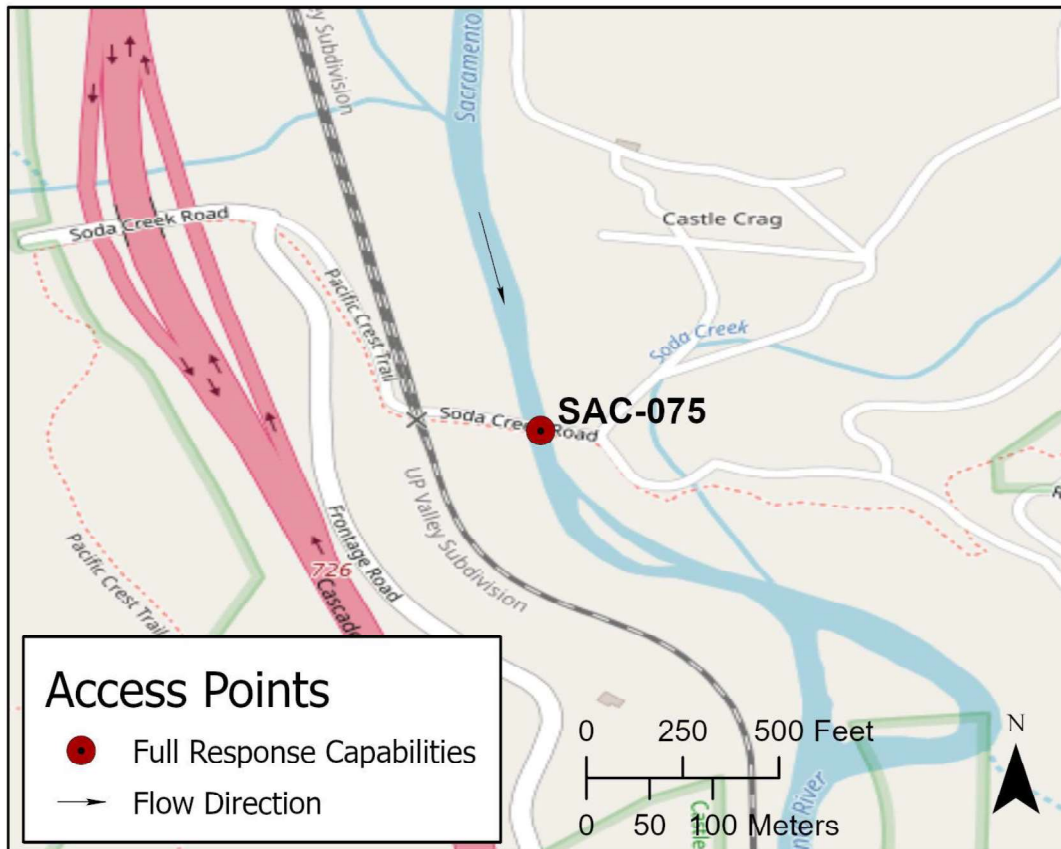
**Highway Post Mile:** N/A

Take the Soda Creek Road exit, Exit #726, off I-5. Head east on Soda Creek Road until you reach the Sacramento River, on the east side of the UPRR tracks.

**Railroad Milepost:** UPRR 318.06 –  
Valley Subdivision

**Nearest Address and Thomas Guide #:**  
N/A

**Cell Service:** Spotty – Verizon tested

**Overview Street Map****Hazards, Restrictions and Advice for Responders**

UPRR track crossing #750544S is located on the west side of the bridge at milepost 318.06.

There is a private, gated property located on the east side of the bridge. Google Maps shows a road heading north above the river-left shoreline from this private, gated property.

Elevation at this site is 2,101 feet above MSL.

Best product collection point is a deep hole in the river with slower water on the east side of the bridge.

**Resources-At-Risk**

**Ecological:** Bald Eagle, Osprey, Foothill Yellow-legged Frog, Cascade frog

**Economic:** Fishing guide services

**Tribal:** Contact the Native American Heritage Commission at (916) 373-3710.

**Cultural and Historic:** Contact the Northeast Information Center at (530) 898-6256.

## Site Description and Field Notes

**River Width:** 27 meters  
(90 feet)

**Gradient:** Medium

**Site Contact/s:**

UPRR RMCC  
(888) 877-7267

**Site Location/Segment:** SAC-SH-A-005

The Pacific Crest Trail crosses this bridge and heads west-northwest into Castle Crags State Park on the west side of I-5.

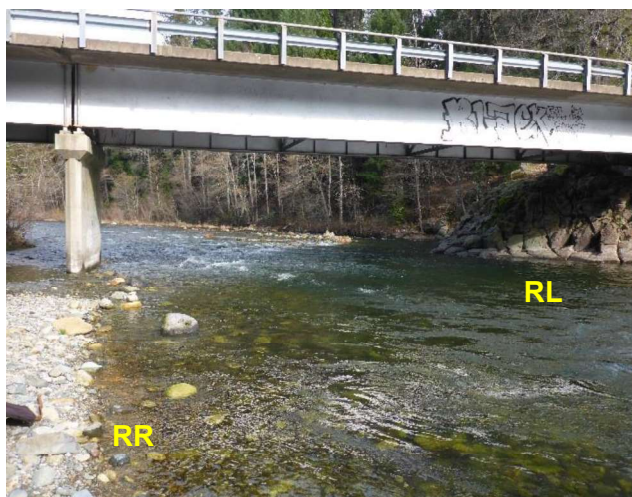
**Vehicular Access:** All vehicle types can access this site.

**Recreational Use:** Fishing, rafting/kayaking, water-contact.

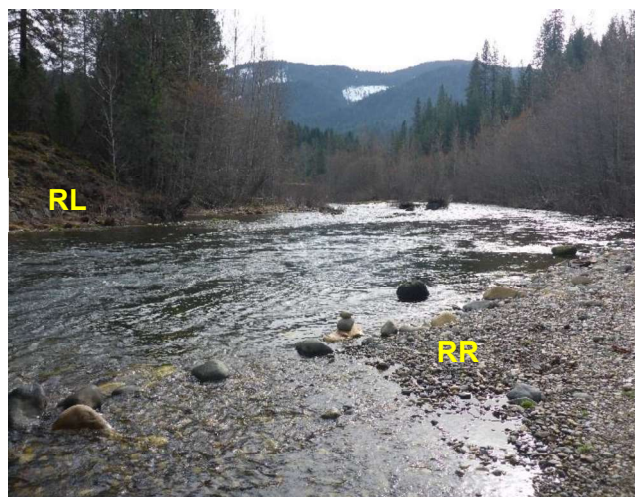
**Boat Launches:** Use shoreline for launching rafts or kayaks. There are no boat ramps along the upper Sacramento River between Box Canyon Dam and Lake Shasta (Divisions SAC-SK-A and SAC-SH-A).

**ESI Shoreline Type:** Exposed rocky banks (1A); Exposed, solid man-made structures (1B); Rocky shoals and bedrock ledges (2A); Vegetated low banks (9B).

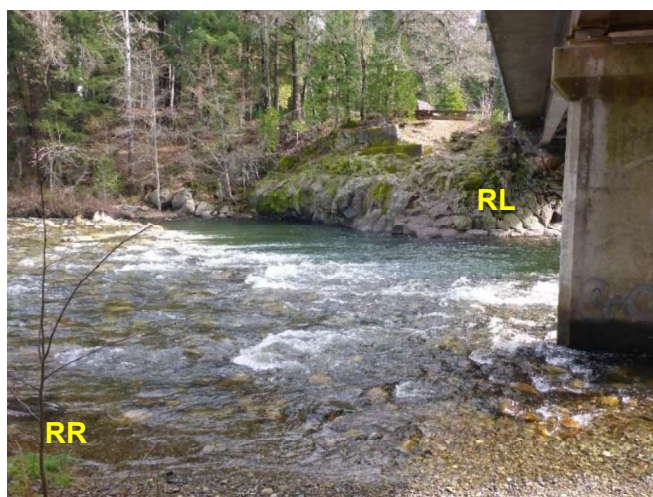
## Site Images



Upstream



Downstream



Straight Across

RR = River-Right RL = River-Left

Photo Date: 01/29/2018

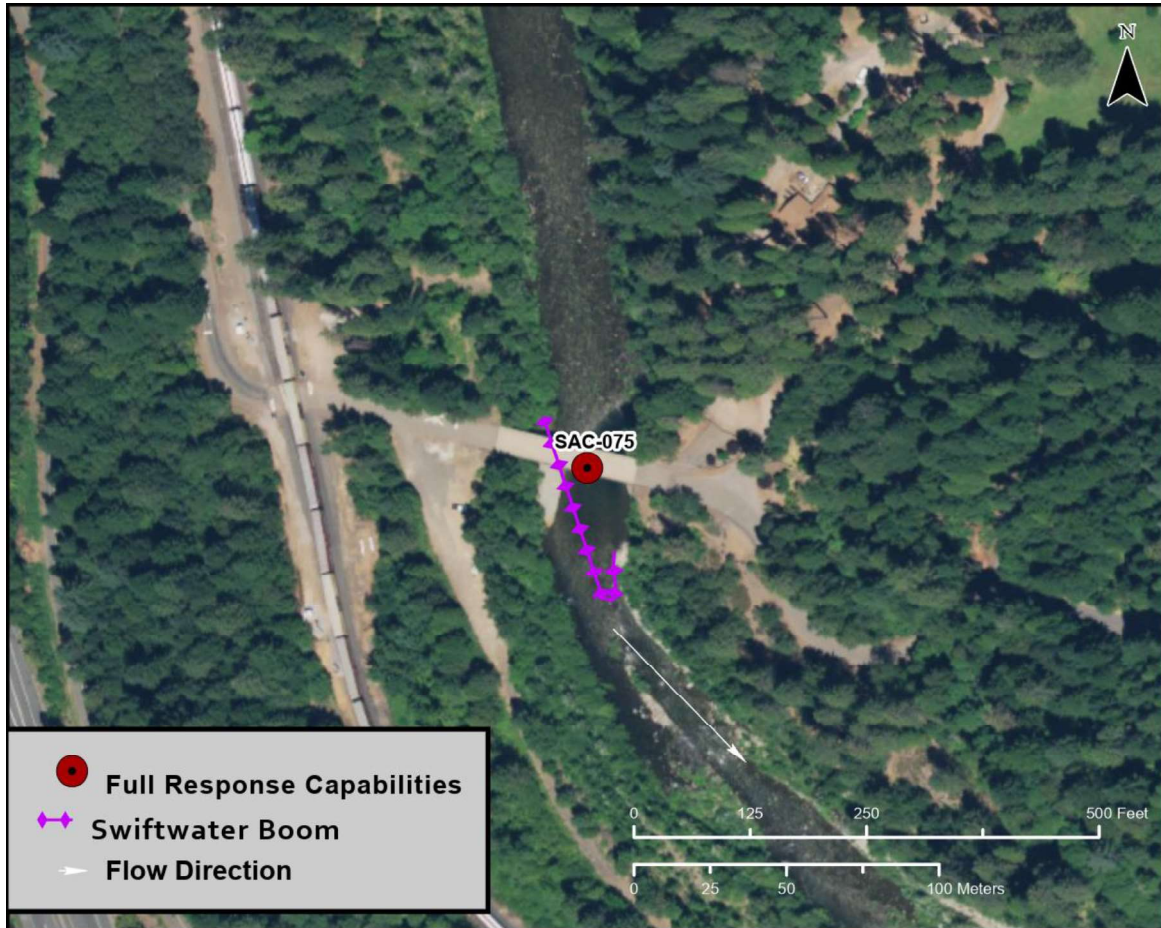


**Site Objectives:** Deflection boom and product collection.

**Implementation:** The eddy on the river-left shoreline above and below the bridge is a good product collection location. At low water flow, set 400 feet of swiftwater boom from river-right shoreline upstream of bridge and deflect to the eddy on river-left shore just below the bridge. Use excess boom to protect shoreline at collection area. Deploy secondary 250 feet of boom from the river-right shoreline at the bridge to the island below the eddy on the river-left shoreline to capture oil that may entrain under the primary boom set. Recover floating product with skimmer and pump up to vacuum truck.

**Staging Area Location and Capabilities/Amenities/Waste Management:** There is open space for staging equipment and managing wastes on the west side of the bridge.

### Response Strategy Map (overview)



**Table of Response Resources**

Type	Sub-Type	Size	Unit	QTY - Unit	Special Equipment or Comments
Boom	Sorbent	5 to 8	inch	800 feet	
Boom	Swiftwater	8 to 12	inch	650 feet	This length of boom is sufficient to deploy a primary boom set and a secondary boom set.
Skimmer	Disc, Drum, or Weir			1	
Storage Tank		20,000	gallon	5	
Vacuum Truck		70	bbl	1	Check bridge weight loading restrictions.
Pads and Sweep	Sorbent		bale	40	
Personnel				6 to 8 crew	