

Latitude: N 41.18410
Longitude: W -122.28433

Driving Directions

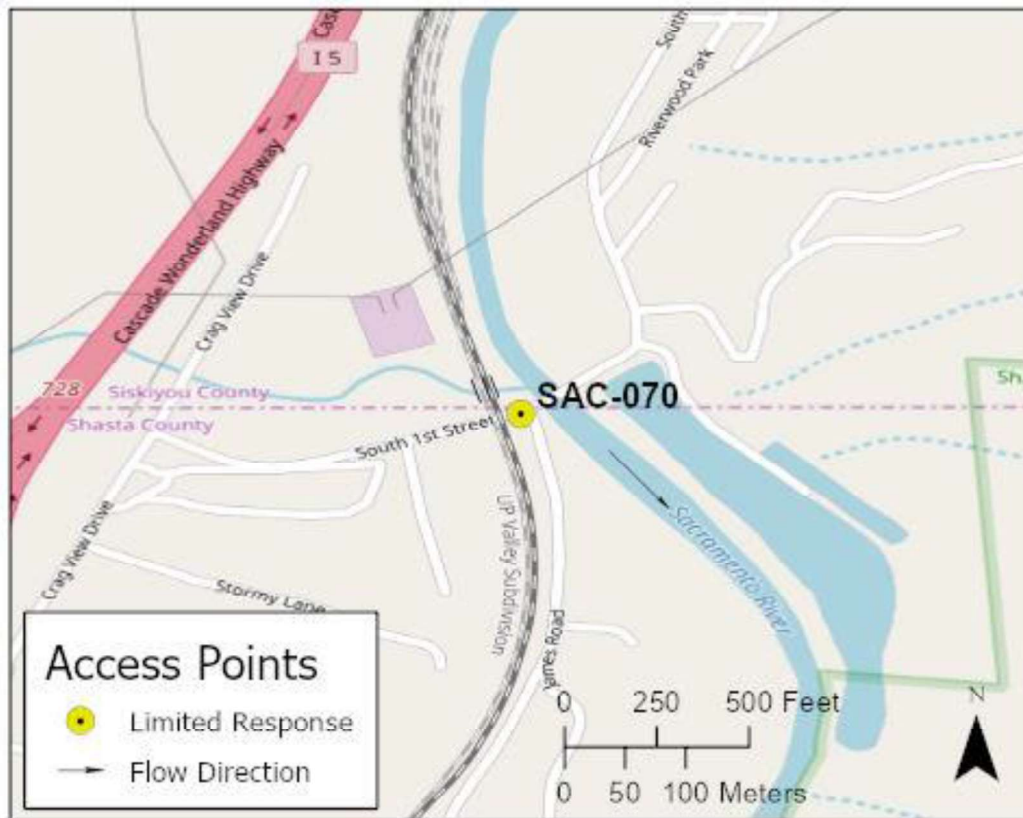
Highway Post Mile: N/A

Take the Railroad Park Road exit, Exit #728, off I-5. Head east at the bottom of the off ramp. Turn north onto Crag View Drive. Turn east onto South 1st Street and follow road to the river and bridge.

Railroad Milepost: UPRR 319.91 –
Valley Subdivision

Nearest Address and Thomas Guide #:
N/A

Cell Service: Yes – Verizon tested

Overview Street Map**Hazards, Restrictions and Advice for Responders**

Contact Siskiyou County Public Works Department at (530) 842-8250 regarding loads weighing more than 70,000 lbs before crossing the South 1st Street bridge. Consider attaching vacuum hose lines to the bridge to reach the east side instead of crossing the bridge with vacuum trucks.

This is the last site in Division SAC-SK-A. The Shasta County/Siskiyou County line is located on the west side of the South 1st Street bridge.

The confluence of Little Castle Creek and the Sacramento River is located about 75 feet north of the bridge.

UPRR track subdivision changes from Black Butte Subdivision to the Valley Subdivision at milepost 320, just upstream of the bridge.

Site elevation is 2,179 feet above MSL.

Resources-At-Risk

Ecological: Northern Goshawk, Osprey, Bald Eagle, Foothill Yellow-legged Frog, Oregon fireweed

Economic: Fishing guide services

Tribal: Contact the Native American Heritage Commission at (916) 373-3710.

Cultural and Historic: Contact the Northeast Information Center at (530) 898-6256.

Site Description and Field Notes

River Width: 37 meters
(120 feet)

Gradient: Medium

Site Contact/s:

UPRR RMCC
(888) 877-7267

Site Location/Segment: SAC-SK-A-060

The City of Dunsmuir Wastewater Treatment Plant is located on the east side of the Sacramento River, on the south side of South 1st Street.

Vehicular Access: All vehicle types can access this site.

Recreational Use: Fishing, rafting/kayaking, water-contact.

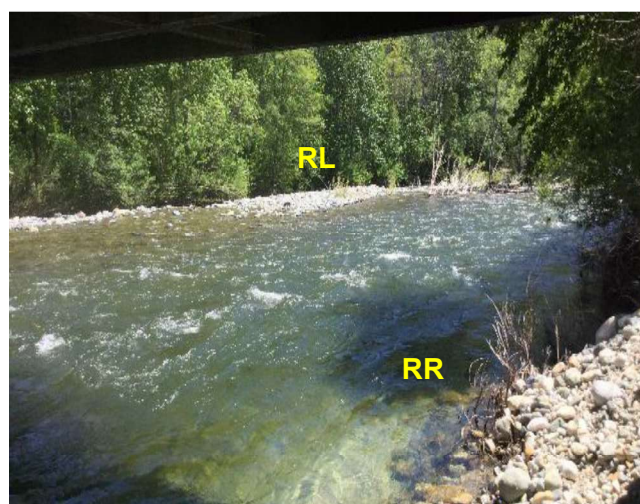
Boat Launches: Use shoreline for launching rafts or kayaks. There are no boat ramps along the upper Sacramento River between Box Canyon Dam and Lake Shasta (Divisions SAC-SK-A and SAC-SH-A).

ESI Shoreline Type: Exposed rocky banks (1A); Exposed, solid man-made structures (1B); Vegetated low banks (9B)

Site Images



Upstream



Downstream



Straight Across

RR = River-Right RL = River-Left

Photo Date: 05/10/2017

Site Objectives: Deflection boom and product collection. At low river velocity, underflow dams can be constructed along the river-left shoreline.

Implementation: Set 500 feet of swiftwater boom high above bridge on river-right shore and deflect product toward slower water near bridge on river-left shore. Use excess boom to protect shoreline at collection area. At low river velocity, underflow dams can be constructed along the gravel bar on the river-left shoreline. Collect product in slower water along river-left shore upstream of the bridge.

Staging Area Location and Capabilities/Amenities/Waste Management: Stage equipment and manage wastes at the City of Dunsmuir Wastewater Treatment Plant on southeast side of the bridge.

Response Strategy Map (overview)

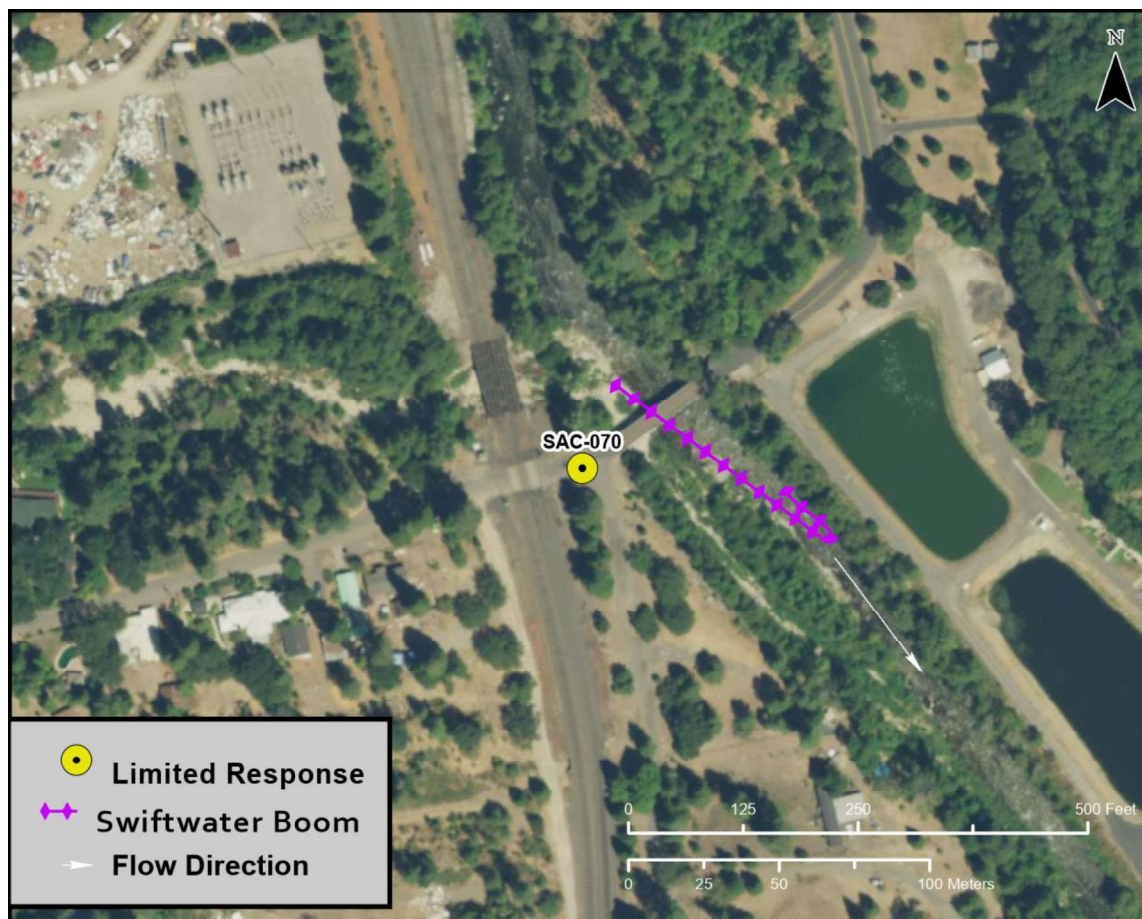


Table of Response Resources

Type	Sub-Type	Size	Unit	QTY - Unit	Special Equipment or Comments
Boom	Sorbent	5 to 8	inch	800 feet	
Boom	Swiftwater	8 to 12	inch	500 feet	
Skimmer	Disc or Drum			1	
Storage Tank		20-000	gallon	5	
Vacuum Truck		70	bbl		
Pads and Sweep	Sorbent		bale	40	
Personnel				6 to 8 crew	