

Latitude: N 41.22553
Longitude: W -122.27927

Driving Directions

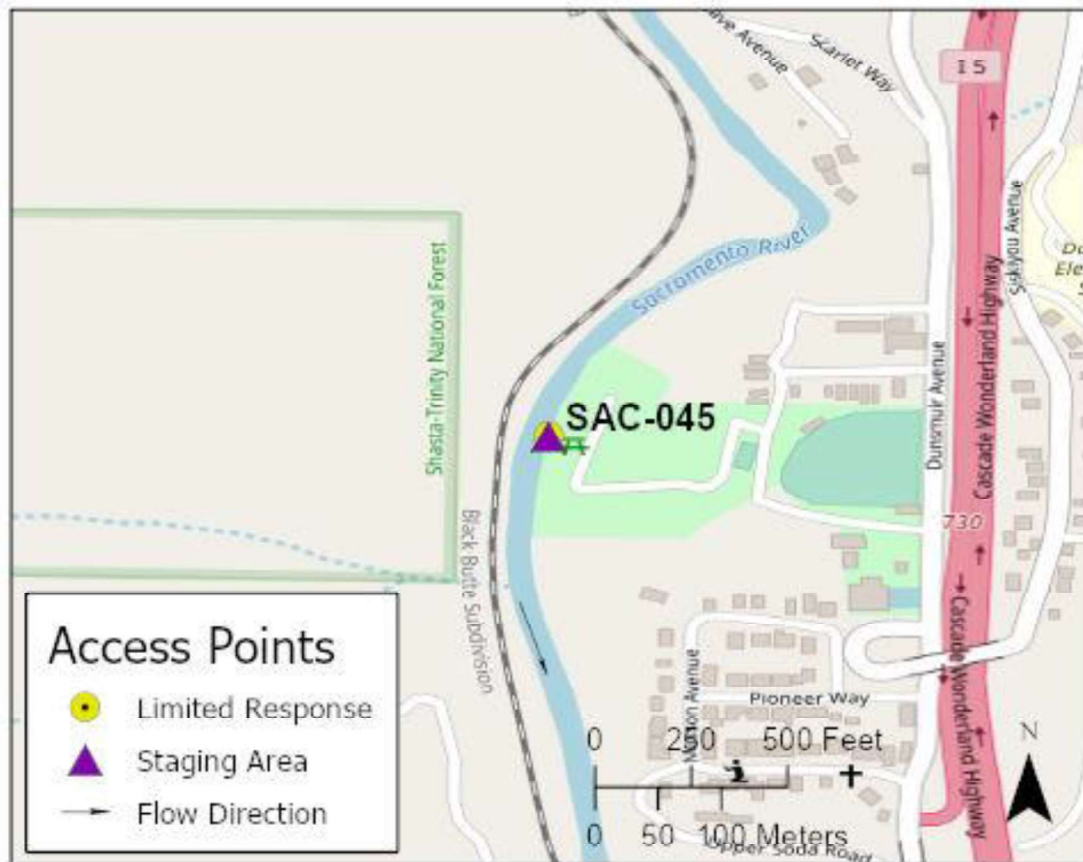
Highway Post Mile: N/A

Take the Central Dunsmuir exit off I-5, Exit #730. Head north on Dunsmuir Avenue. Turn left (west) into Dunsmuir City Park and follow signs back toward the botanical gardens.

Railroad Milepost: UPRR 323.45 –
 Black Butte Subdivision

Nearest Address and Thomas Guide #:
 N/A

Cell Service: Yes – Verizon tested

Overview Street Map**Hazards, Restrictions and Advice for Responders**

Access gate to city park is open 0700 to dusk. Park has restroom facilities.

Hiking trails leading upstream and downstream of the parking area are found on the river-left shoreline.

UPRR tracks are located above the river-right shoreline. Best access to the river-right shore is via the UPRR tracks. Coordinate with UPRR Response Management Communications Center (RMCC) at (888) 877-7267.

Elevation at river is 2,395 feet above MSL.

Resources-At-Risk

Ecological: Bald Eagle, Osprey, Oregon fireweed

Economic: Fishing guide services, City Botanical Gardens

Tribal: Contact the Native American Heritage Commission at (916) 373-3710.

Cultural and Historic: Contact the Northeast Information Center at (530) 898-6256.

Site Description and Field Notes

River Width: 24 meters
(80 feet)

Gradient: Medium to swift

Site Contact/s:

Dunsmuir Recreation &
Parks District
(530) 926-2494

UPRR RMCC
(888) 877-7267

Site Location/Segment: SAC-SK-A-035

Response site is a city park and botanical gardens.

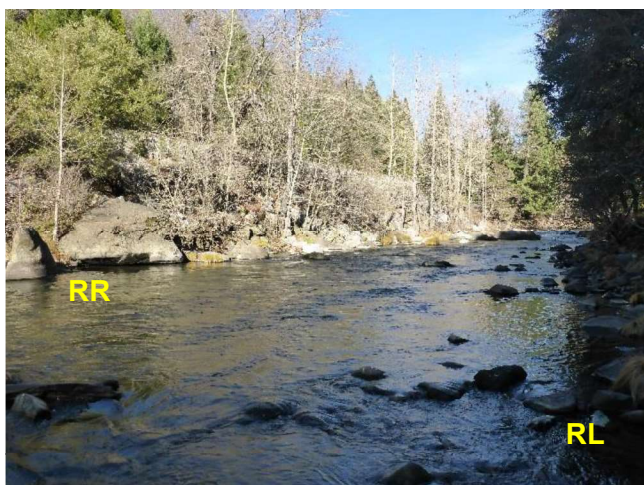
Vehicular Access? Park is accessible to all types of vehicles.

Recreational Use? Fishing, rafting/kayaking, water-contact

Boat Launches: Use shoreline for launching rafts or kayaks. There are no boat ramps along the upper Sacramento River between Box Canyon Dam and Lake Shasta (Divisions SAC-SK-A and SAC-SH-A).

ESI Shoreline Type: Exposed rocky banks (1A); Rocky shoals and bedrock ledges (2A); Vegetated steeply sloping bluffs (8F)

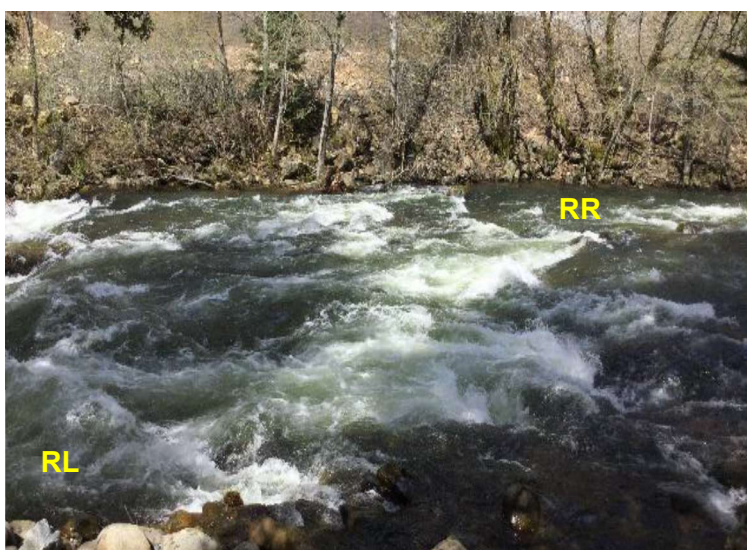
Site Images



Upstream



Downstream



Straight Across

RR = River-Right RL = River-Left

Photo Date: 12/09/2017

Site Objectives: Deflection boom and product collection.

Implementation: Best boom deployment area is at the north end of the parking lot. Deploy 400 feet of swiftwater boom from upstream river-right shoreline to eddies found downstream along river-left shore. Protect shoreline at collection area with excess boom. Use skimmer to collect floating product inside boom and pump directly up to vacuum truck.

Staging Area Location and Capabilities/Amenities/Waste Management: Good staging at the park with more space available outside the park gate. Additional staging areas located at Tauhindauli River Park and UPRR Dunsmuir Rail Yard. Response site is accessible by a 70-bbl vacuum truck.

Response Strategy Map (overview)

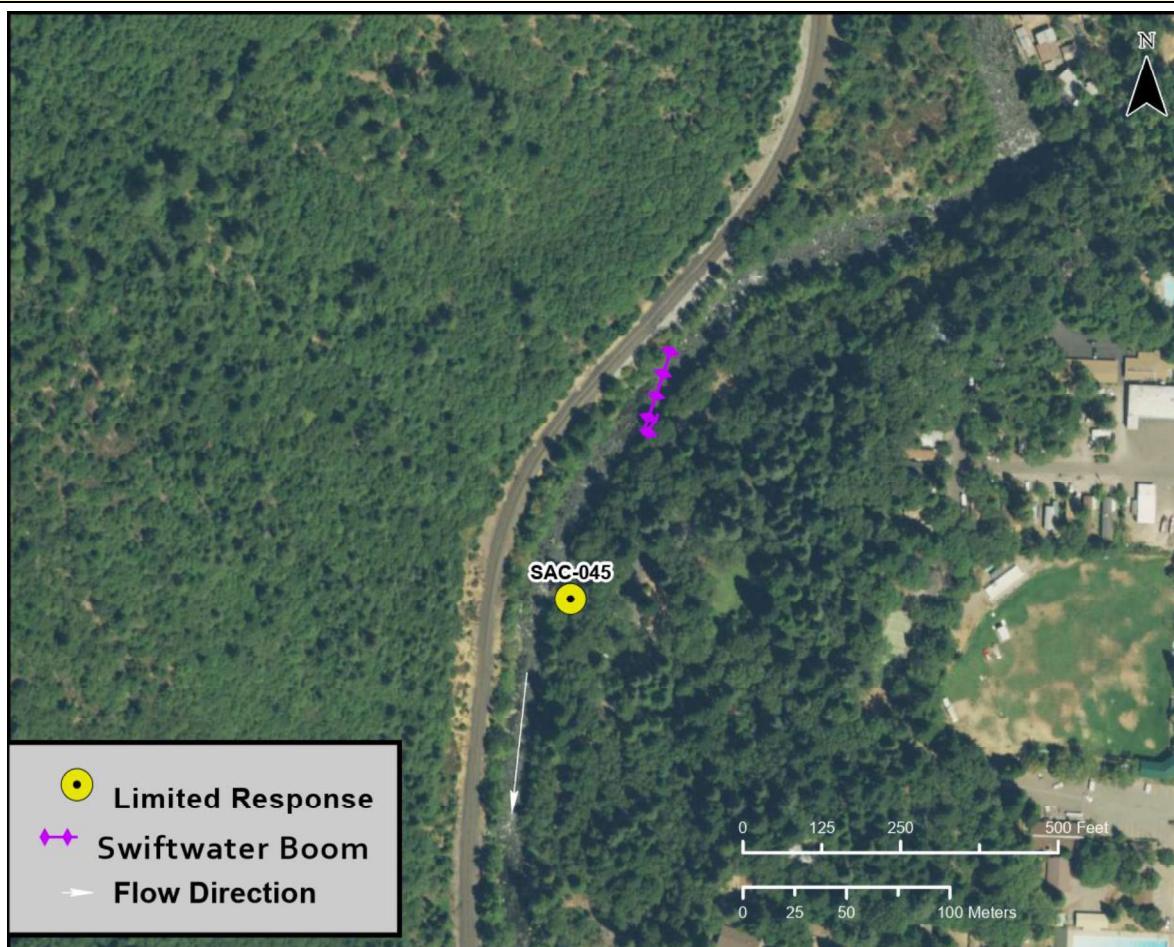


Table of Response Resources

Type	Sub-Type	Size	Unit	QTY - Unit	Special Equipment or Comments
Boom	Sorbent	5 to 8	inch	600 feet	
Boom	Swiftwater	8 to 12	inch	400 feet	
Skimmer	Disc or Drum			1	
Storage Tank		20,000	gallon	5	
Vacuum Truck		70	bbl	1	
Pads and Sweep	Sorbent		bale	40	
Personnel				6 to 8 crew	