

Latitude: N 41.2366
Longitude: W -122.27576

Driving Directions

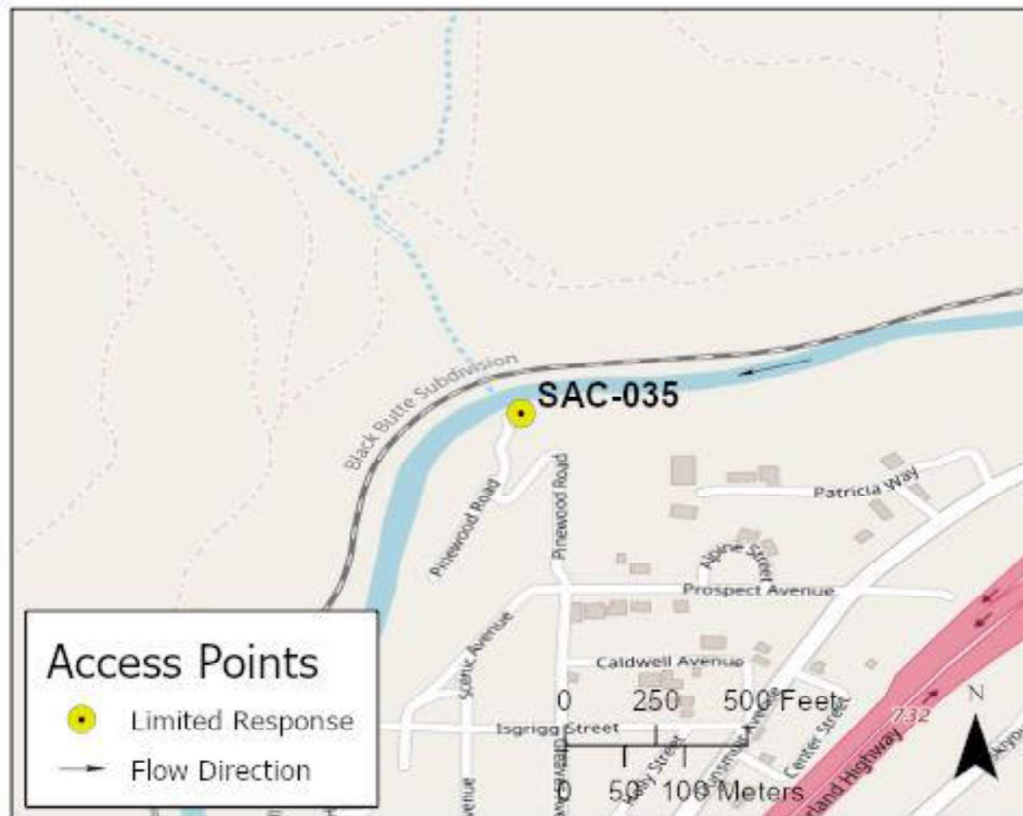
Highway Post Mile: N/A

Railroad Milepost: UPRR 324.32 –
 Black Butte Subdivision

Take the Central Dunsmuir exit off I-5, Exit #730. Head north on Dunsmuir Avenue until you reach Prospect Avenue. Turn onto Prospect Avenue and head west until Prospect Avenue intersects Gleaves Avenue. Continue heading west onto a narrow dirt road with sign indicating Prospect Avenue Fishing Access. Follow dirt road down to small parking area at the river.

Nearest Address and Thomas Guide #:
 N/A

Cell Service: Yes – Verizon tested

Overview Street Map**Hazards, Restrictions and Advice for Responders**

Access to river is via a narrow one-lane dirt road. Access road is accessible for a 70-bbl vacuum truck.

Elevation at river is 2,409 feet above MSL.

A private residence is located approximately 250 yards downstream and up the dirt access road from the parking area by the river.

UPRR tracks are located immediately above river-right shoreline. Nearest track crossing is the Simpson Avenue Crossing #748858N at UPRR Milepost 323.77, on west side of Simpson Avenue bridge, about ½ mile downstream.

Resources-At-Risk

Ecological: Bald Eagle, Osprey

Economic: Fishing guide services

Tribal: Contact the Native American Heritage Commission at (916) 373-3710.

Cultural and Historic: Contact the Northeast Information Center at (530) 898-6256.

Site Description and Field Notes

River Width: 27 meters
(90 feet)

Gradient: Medium to high

Site Contact/s:

UPRR RMCC
(888) 877-7267

California Department of
Fish and Wildlife – Region 1
(530) 225-2300

Site Location/Segment: SAC-SK-A-025

This site is a popular fishing location.

Vehicular Access: Accessible to all types of vehicles. Coordinate with UPRR personnel for access to river-right shoreline.

Recreational Use: Fishing, water-contact, rafting/kayaking

Boat Launches: Use shoreline for launching rafts or kayaks. There are no boat ramps along the upper Sacramento River between Box Canyon Dam and Lake Shasta (Divisions SAC-SK-A and SAC-SH-A).

ESI Shoreline Type: Exposed rocky banks (1A); Exposed rocky cliffs with boulder talus base (1C); Vegetated, steeply-sloping bluffs (8F); Vegetated low banks (9B)

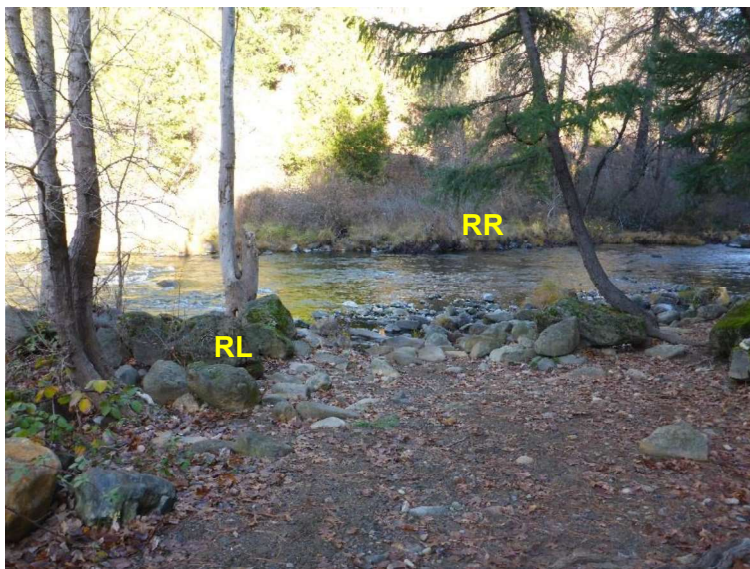
Site Images



Upstream



Downstream



Straight Across

RR = River-Right RL = River-Left

Photo Date: 12/09/2017

Site Objectives: Deflection boom and product collection.

Implementation: Deploy 350 feet of swiftwater boom from upstream river-right shore to eddy at parking area on river-left shore. Use additional boom to protect shoreline at collection area. Collect floating product with skimmer inside of boom and pump directly to 70-bbl vacuum truck.

Staging Area Location and Capabilities/Amenities/Waste Management: Nearest staging area is at Dunsmuir City Park. Additional staging locations available at Tauhindauli River Park and UPRR Dunsmuir Rail Yard. Remove collected wastes at end of each workday and manage waste quantification and disposal at one of the staging areas.

Response Strategy Map (overview)

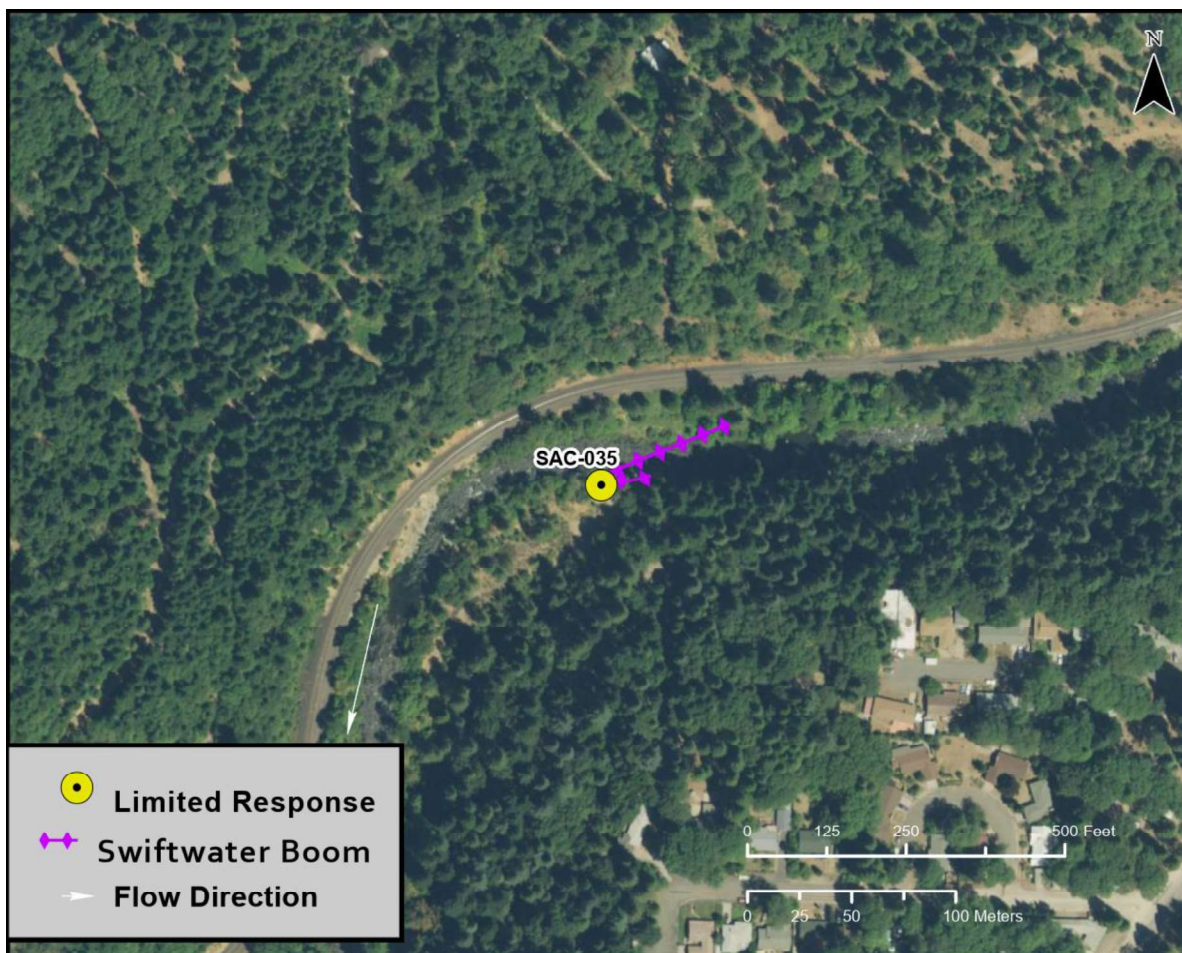


Table of Response Resources

Type	Sub-Type	Size	Unit	QTY - Unit	Special Equipment or Comments
Boom	Sorbent	5 to 8	inch	600 feet	
Boom	Swiftwater	8 to 12	inch	350 feet	
Skimmer	Disc or Drum			1	
Storage Tank		20,000	gallon	5	Storage tanks can be staged at Dunsmuir City Park.
Vacuum Truck		70	bbl	1	
Pads and Sweep	Sorbent		bale	40	
Personnel				6 to 8 crew	