

Latitude: N 41.241755
Longitude: W -122.266541

Driving Directions

Highway Post Mile: N/A

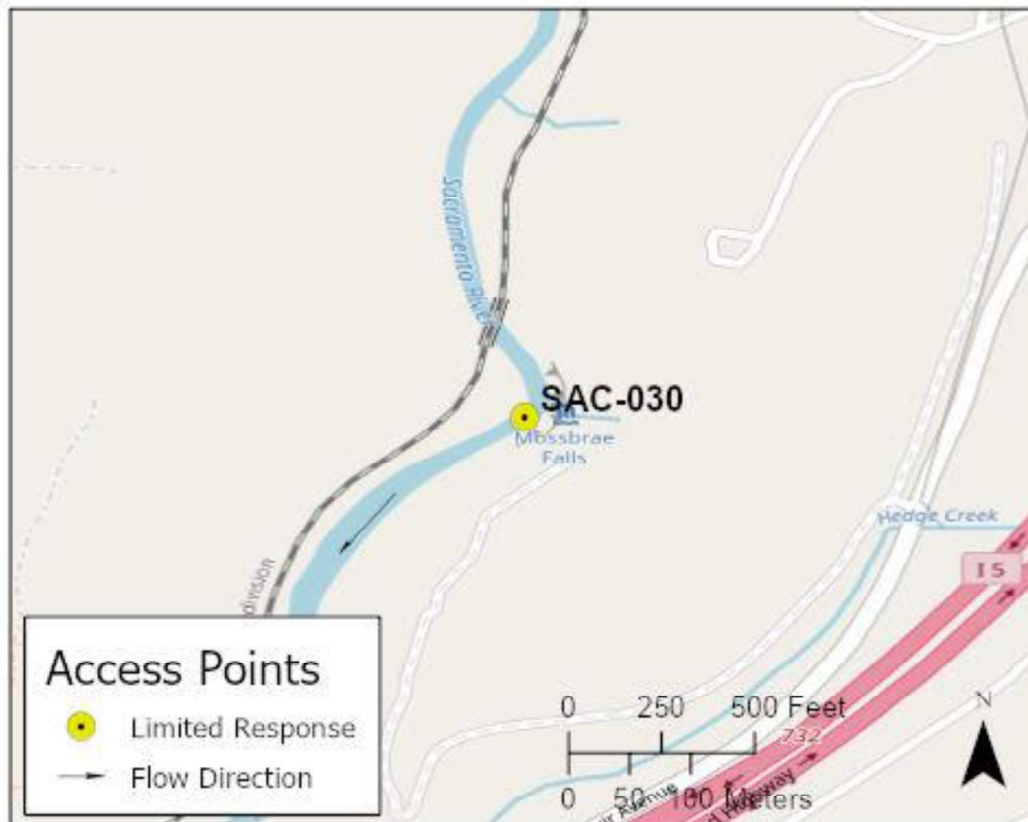
Railroad Milepost: UPRR 324.95 -
 Black Butte Subdivision

Nearest Address and Thomas Guide #:
 N/A

Cell Service: Yes – Verizon tested

Take the Central Dunsmuir exit off I-5, Exit #730. Head north on Dunsmuir Avenue until you reach Scarlet Way. Follow Scarlet Way west down to Cave Avenue, which turns into Simpson Avenue on the west side of the Sacramento River. Equipment can be loaded onto rail cars or high rail trucks at the turnout on the west side of the river. Response location (Mossbrae Falls) is located approximately 1.21 miles north of the Simpson Avenue bridge along the UPRR tracks.

If hiking into this location along the tracks, park along Dunsmuir Avenue south of Scarlet Way. Coordinate with UPRR for traffic control.

Overview Street Map**Hazards, Restrictions and Advice for Responders**

Response site is located on upstream side of rail bridge approximately 1.21 miles north of the Simpson Avenue bridge. Coordinate with UPRR to transport equipment to the response site. Contact UPRR Response Management Communications Center (RMCC) at (888) 877-7267. Mossbrae Falls is located about 200 yards downstream of the rail bridge at UPRR Milepost 324.95. Additional protection strategies can be implemented along the base of the falls to keep product in the current for collection in eddies along the river-right shoreline.

If hiking into this site along the rail tracks, coordinate with UPRR regarding train traffic.

NOTE: Scarlet Way, Cave Avenue, Simpson Avenue and all of the streets in the Shasta Retreat community are very narrow and difficult for large vehicles to maneuver in.

Resources-At-Risk

Ecological: Bald Eagle, Osprey, Black Swift

Economic: Fishing guide services; UPRR infrastructure; Mossbrae Falls is a local tourist attraction drawing many people to the site year-round.

Tribal: Contact the Native American Heritage Commission at (916) 373-3710.

Cultural and Historic: Contact the Northeast Information Center at (530) 898-6256.

Site Description and Field Notes

River Width: 24 meters
(80 feet) at rail bridge

Gradient: Low to Medium

Site Contact/s:

UPRR RMCC
(888) 877-7267

Site Location/Segment: SAC-SK-A-020

UPRR Simpson Avenue track crossing #748858N is located on the west side of the Simpson Avenue bridge, at UPRR track milepost 323.20.

Elevation at this site is 2,494 feet above MSL.

Vehicular Access? There is no vehicle access to this site. Coordinate with UPRR for access via rail car or high rail vehicle. It's possible to hike into the site along the rail tracks, but responders need to coordinate with UPRR for traffic control.

Recreational Use? Fishing, water-contact, hiking, tourist destination

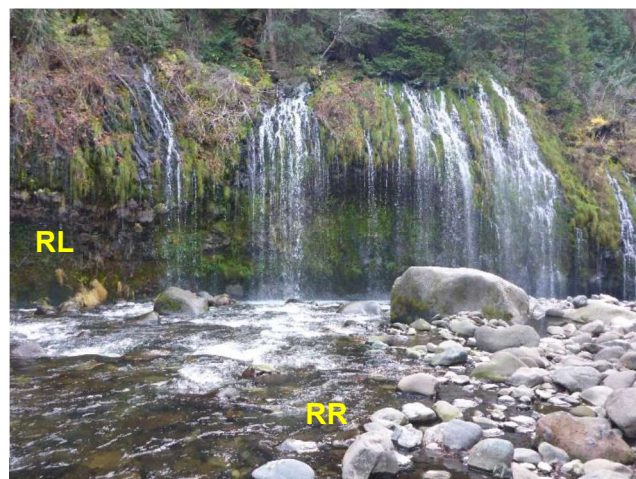
Boat Launches: Use shoreline for launching rafts or kayaks. There are no boat ramps along the upper Sacramento River between Box Canyon Dam and Lake Shasta (Divisions SAC-SK-A and SAC-SH-A).

ESI Shoreline Type: Exposed rocky cliffs with boulder talus base (1C); Vegetated, steeply sloping bluffs (8F).

Site Images



Upstream



Downstream



Straight Across at Rail Bridge

RR = River-Right RL = River-Left

Photo Date: 12/13/2017

Site Objectives: Deflection boom and product collection at rail bridge. Deflection boom away from Mossbrae Falls with possible product collection at eddy downstream.

Implementation: Attempt to collect product above rail bridge by deploying 400 feet of swiftwater boom from upstream river-left shore to an eddy on the upstream side of the rail bridge at the river-right shore. Use series of high-speed pumps to collect product in tanks stationed on the tracks on the south end of the rail bridge. Additionally, deploy 250 feet of swiftwater boom at base of Mossbrae Falls to keep floating product in the current for collection in eddies along the river-right shoreline downstream of the falls. Use additional boom as necessary to protect shoreline at collection areas.

Staging Area Location and Capabilities/Amenities/Waste Management: Response assets can be transported to the site from the north at the Cantara Loop Road track crossing #411012E or from the south at the Simpson Avenue track crossing #748858N. There is more space available for staging at the Cantara Loop Rail Bridge response site. Additional staging in Dunsmuir is at the UPRR Dunsmuir Rail Yard, Tauhindauli River Park, and Dunsmuir City Park. Remove collected wastes at end of each workday and manage waste quantification and disposal at one of the staging areas.

Response Strategy Map (overview)

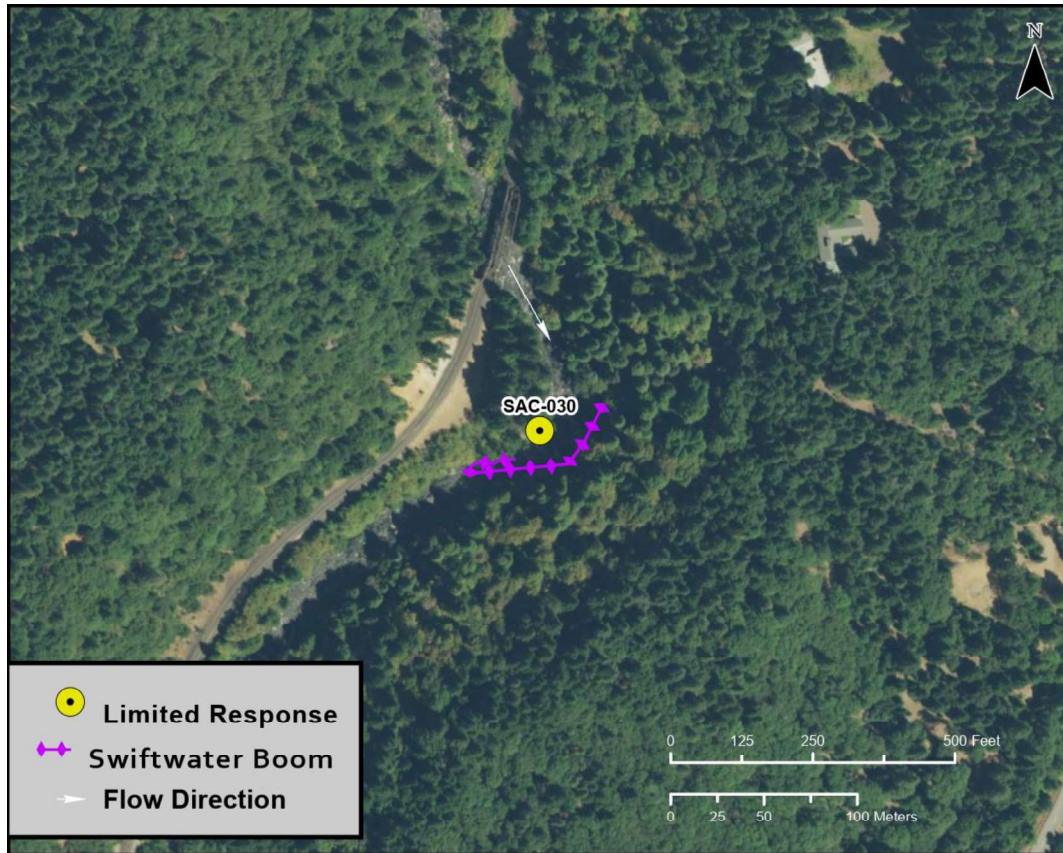


Table of Response Resources

Type	Sub-Type	Size	Unit	QTY - Unit	Special Equipment or Comments
Boom	Sorbent	5 to 8	inch	1,000 feet	
Boom	Swiftwater	8 to 12	inch	650 feet	
Skimmer	Disc or Drum			1	
Storage Tank		20,000	gallon	5	
Pumps	High-Speed			2	To pump recovered product up to storage tanks at track elevation.
Pads and Sweep	Sorbent		bale	40	
Personnel				6 to 8 crew	