

**Latitude:** N 41.26595  
**Longitude:** W -122.30747

**Driving Directions**

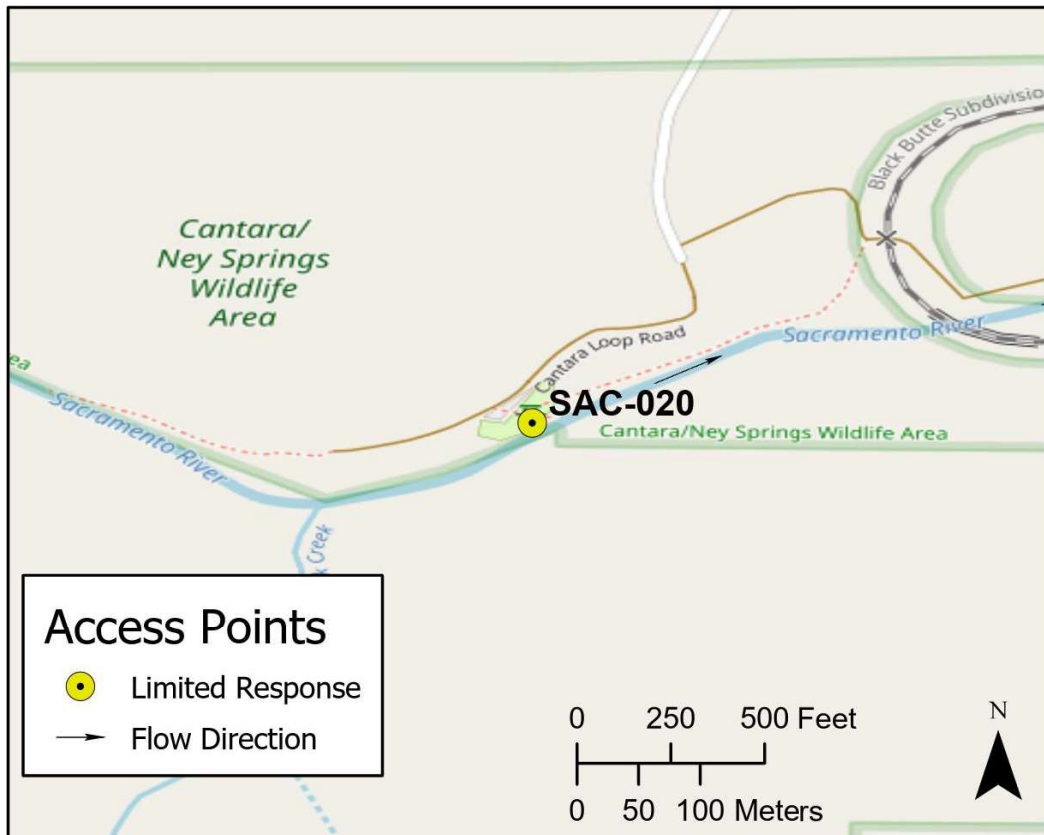
**Highway Post Mile:** N/A

Take Mott Road exit off I-5, Exit #734. Head west to South Old Stage Road. Head north on South Old Stage Road to Cantara Loop Road. Head west on Cantara Loop Road and follow road down to a dirt parking area along the Sacramento River.

**Railroad Milepost:** N/A

**Nearest Address and Thomas Guide #:**  
N/A

**Cell Service:** Yes – Verizon tested

**Overview Street Map****Hazards, Restrictions and Advice for Responders**

This property is part of the Cantara/Ney Springs Wildlife Area. River access is via hiking trails upstream and downstream of the parking area along the river-left shoreline.

There is not much threat of a hazardous materials release affecting this area. Biggest threat is from discharges out of Lake Siskiyou and possible releases from Box Canyon Dam facilities.

Site elevation is 2,810 feet above MSL.

Need raft or kayak to reach river-right shoreline. Additional river-right shoreline access may be gained by crossing the UPRR Cantara Loop bridge located about ¼ mile downstream.

**Resources-At-Risk**

**Ecological:** Bald Eagle, Osprey, Foothill Yellow-legged Frog, Shasta chaenactis,

**Economic:** Fishing guide services

**Tribal:** Contact the Native American Heritage Commission at (916) 373-3710.

**Cultural and Historic:** Contact the Northeast Information Center at (530) 898-6256.

## Site Description and Field Notes

**River Width:** 17 meters  
(55 feet)

**Gradient:** Medium

**Site Contact/s:**

California Department of  
Fish and Wildlife – Region 1  
(530) 225-2300

NORCOM Dispatch  
(916) 358-1310

**Site Location/Segment:** SAC-SK-A-010

Narrow canyon below Lake Siskiyou. Good background site for natural resource damage assessment sampling.

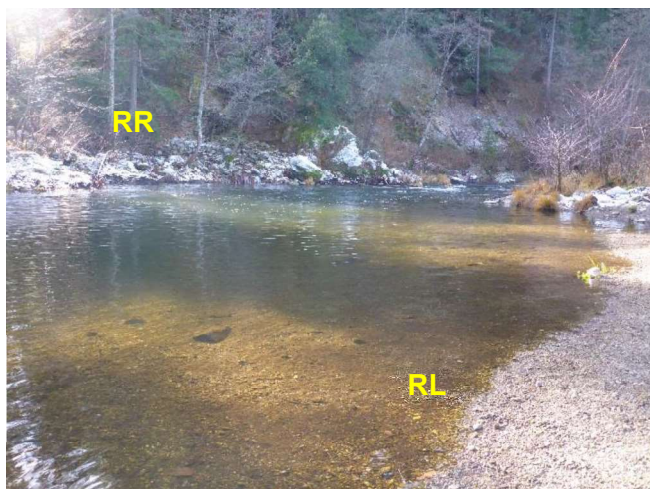
**Vehicular Access:** All vehicle types can access this location.

**Recreational Use:** Fishing, water-contact, rafting/kayaking, hiking

**Boat Launches:** Use shoreline for launching rafts or kayaks. There are no boat ramps along the upper Sacramento River between Box Canyon Dam and Lake Shasta (Divisions SAC-SK-A and SAC-SH-A).

**ESI Shoreline Type:** Exposed rocky banks (1A); exposed rocky cliffs with boulder talus (1C); Vegetated, steeply-sloping bluffs (8F); vegetated low banks (9B)

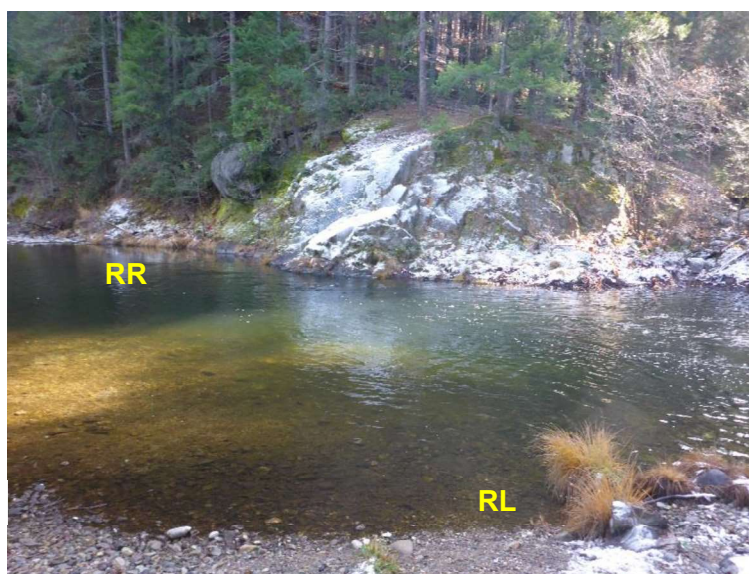
## Site Images



Upstream



Downstream



Straight Across

RR = River-Right RL = River-Left

Photo Date: 12/09/2017

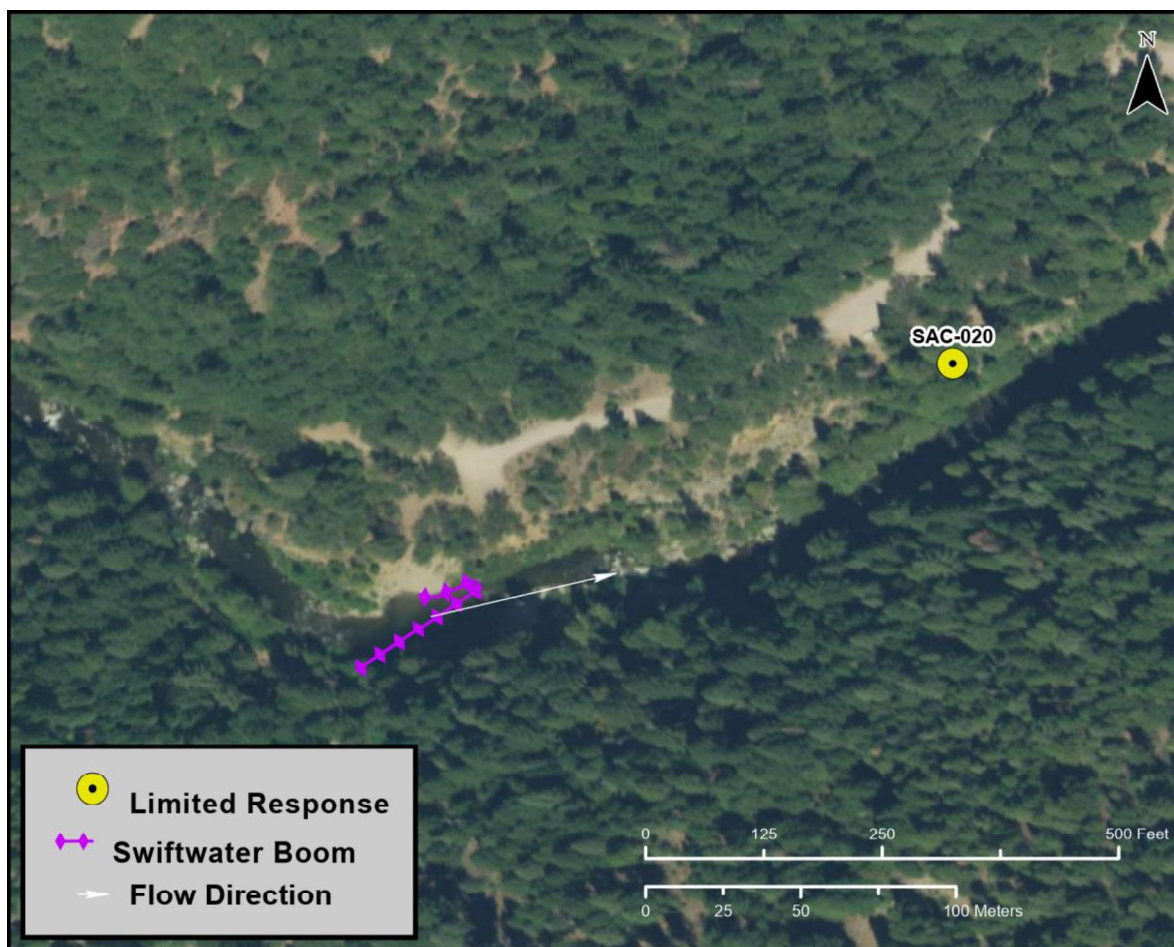


**Site Objectives:** Limited response, shoreline cleanup; possible deflection boom and product collection site.

**Implementation:** Best boom deployment area is straight out from the furthest upstream parking area. Clean shoreline using sorbent pads. If deploying boom, use 250 feet of swiftwater boom to deflect product to eddies along river-left shore and to protect shoreline at the collection area.

**Staging Area Location and Capabilities/Amenities/Waste Management:** Stage equipment in the dirt parking area of the Cantara/Ney Springs Wildlife Area. Site is accessible to a 70-bbl vacuum truck.

### Response Strategy Map (overview)



**Table of Response Resources**

Type	Sub-Type	Size	Unit	QTY - Unit	Special Equipment or Comments
Boom	Sorbent	5 to 8	inch	400 feet	
Boom	Swiftwater	8 to 12	inch	250 feet	
Skimmer	Disc or Drum			1	
Storage Tank		20,000	gallon	5	
Vacuum Truck		70	bbl	1	
Pads and Sweep	Sorbent		bale	40	
Personnel				6 to 8 crew	