

Driving Directions:	From I-5, exit at Harbor Drive and follow the signs to Camp Pendleton main gate (on Vandergrift Boulevard.) Enter and continue ahead approximately 1 mile to Stuart Mesa Road. Turn left and pass over the river and immediately turn left on the dirt trail (Macs Road-Unmarked). Continue approximately 0.5 miles to the site under I-5.		
Latitude: 33.236215 Longitude: -117.405411	Highway Postmile: SD 5 R56.501R	Railroad Milepost: N/A	Cell Service: Yes

Nearest Address: 200 Vandergrift Blvd, Oceanside, CA 92058, **Thomas Guide #:** 408/L9

Overview Street Map



Hazards, Restrictions and Advice for Responders

Evaluate currents, tides, and weather for safe operations before attempting to deploy equipment.

Response efforts at this site will require coordination with the Commanding Officer of Marine Corps Base Camp Pendleton. Gate access and guided travel within Camp Pendleton work sites should be coordinated to help avoid extensive delays clearing the gate security office, and to speed up response time. The base routinely conducts amphibious training and other maritime operations along the beachfront. Early coordination to avoid conflict between responders and military operations is critical.

Resources-At-Risk

Ecological: Light-footed Ridgway's Rail, Coastal California Gnatcatcher, Belding's Savannah Sparrow, California Least Tern, Little Pocket Mouse, Western Spadefoot Toad, Fairy Shrimp, Coulter's Goldfields, Coulter's Saltbrush, Coast Woolly-heads, Coast Wallflower

Economic: N/A

Tribal: Contact the Native American Heritage Commission at (916)-373-3710

Cultural and Historic: Contact the South Coastal Information Center at (619) 594-5682

Site Description and Field Notes

Site Location/Segment: MAR-SD-C-010	Site Description and Field Notes: Unlined, natural river that is subject to dynamic flow and tidal influence. This site is also contained in the Sector San Diego Area Contingency Plan (ACP6-145).			
Gradient: Low	River Width: 100 m (328 ft)	Vehicular Access? Stake bed trucks and pick-up trucks towing trailers can generally access the site year-round.	Recreational Use? Area closed to recreation.	Boat Launches: Good hand deployment of skiffs on-site.
Site Contact/s: Provost Marshal's Office Camp Pendleton Desk Sergeant 760-763-2077	MCB Camp Pendleton Spill Hotline (760) 725-9743		MCB Camp Pendleton Commanding Officer (760) 725-5061	
ESI Shoreline Type:	7 & 9B, exposed tidal flats and vegetated low banks			

Site Images



Upstream



Downstream



Entrance

RR = River Right RL = River Left

Photo Date: 1/30/2019

Site Objectives: Install a boom containment to direct oil to the northwest shoreline for recovery.

Implementation: Set up a collection area under the overpass on the north shore with containment boom extending southeast to the opposite shoreline.

Staging Area Location and Capabilities/Amenities/Waste Management: A covered work area under the I-5 bridge can provide sufficient area for a full decontamination station, plus a 5000-gallon vac truck.

Response Strategy Map (overview)

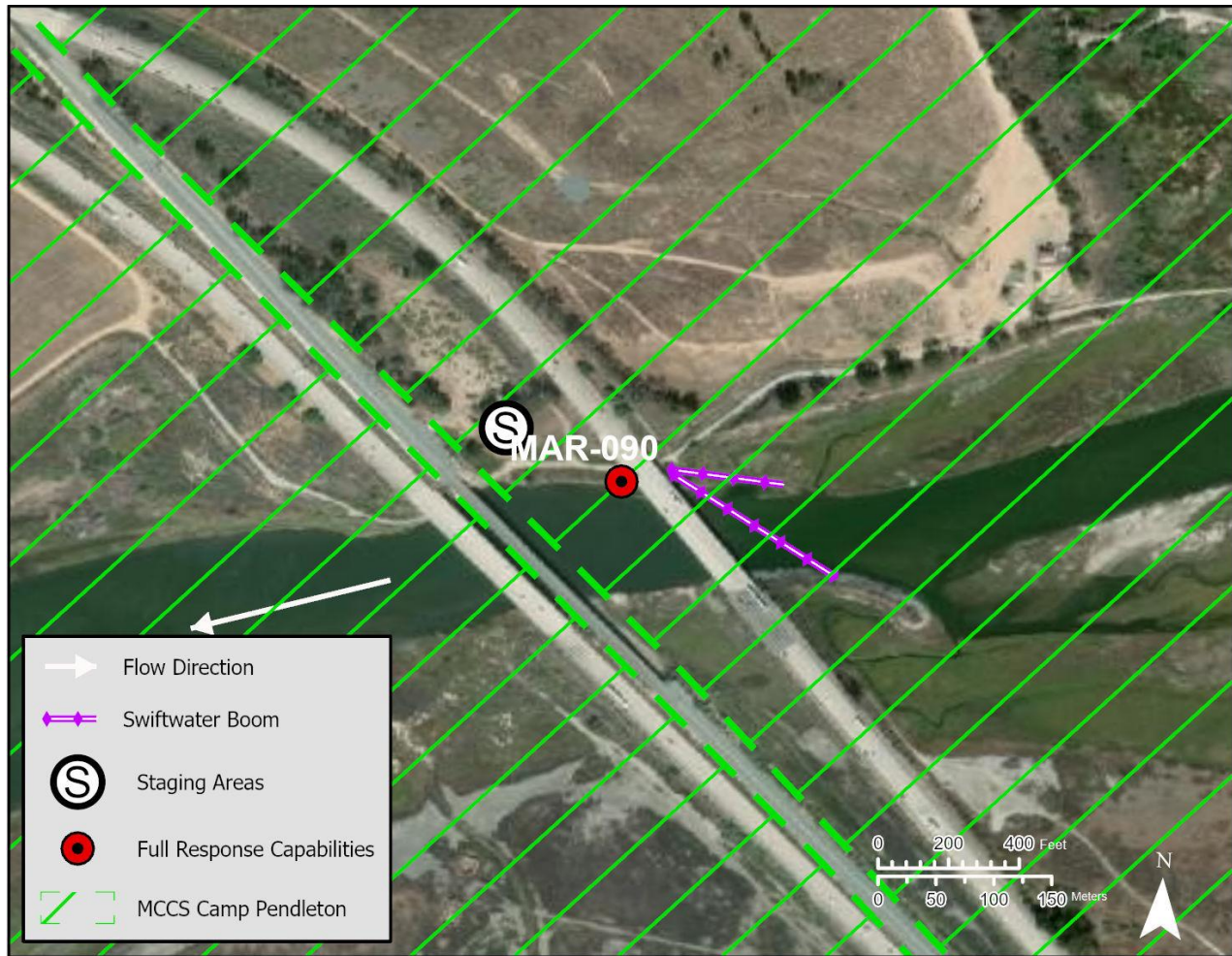


Table of Response Resources

Type	Sub-Type	Size	Unit	QTY - Unit	Special Equipment or Comments
Boom		8	inch	400 feet 200 feet	
Anchor	Danforth	25	pound	2 each	Mid-stream security
Stakes				3	Shoreline attachment
Boat	Skiff	12	feet	2	1 for site safety
Personnel				6	4 boat operators, 2 shore support.