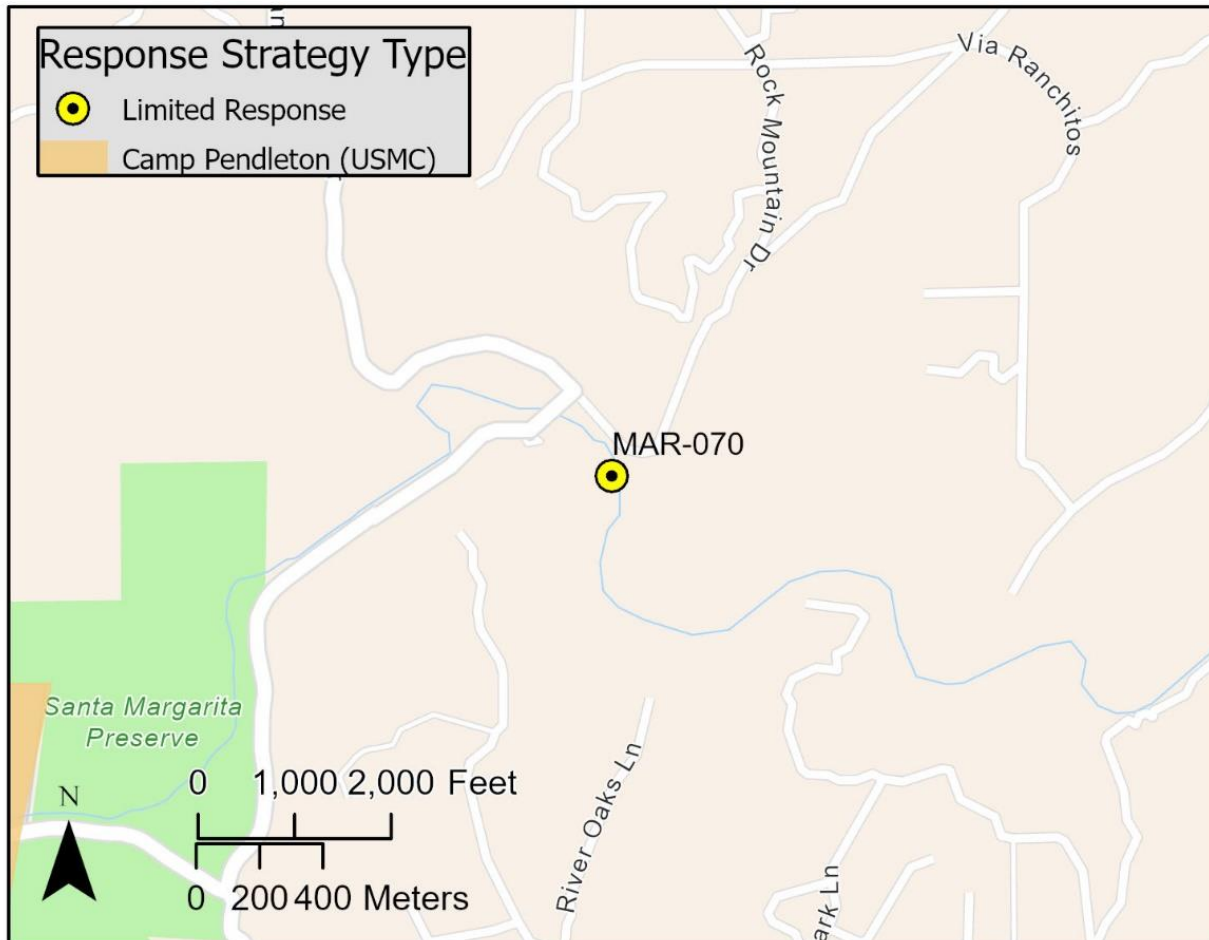


Driving Directions:	From I-15 exit onto East Mission Road (S13). Continue west to Fallbrook. From Fallbrook take a right on De Luz Road north, approximately 1.25 miles to Sandia Creek Drive. Turn right on Sandia Creek Drive and continue to the river crossing.		
Latitude: 33.4137 Longitude: -117.2416	Highway Postmile: RIV 15 R50.98	Railroad Milepost: N/A	Cell Service: Yes
Nearest Address: 4251 River Edge Road Fallbrook, CA 92028, Thomas Guide #: 977/G5			

Overview Street Map



Hazards, Restrictions and Advice for Responders

The river can experience flash flooding following rainstorms.

Resources-At-Risk

Ecological: Least Bell's Vireo, Arroyo Toad, Blainville's Horned Lizard, Chaparral Sand-verbena, Rainbow Manzanita

Economic: Santa Margarita Trail Preserve

Tribal: Contact the Native American Heritage Commission at (916) 373-3710

Cultural and Historic: Contact the South Coastal Information Center at (619) 594-5682

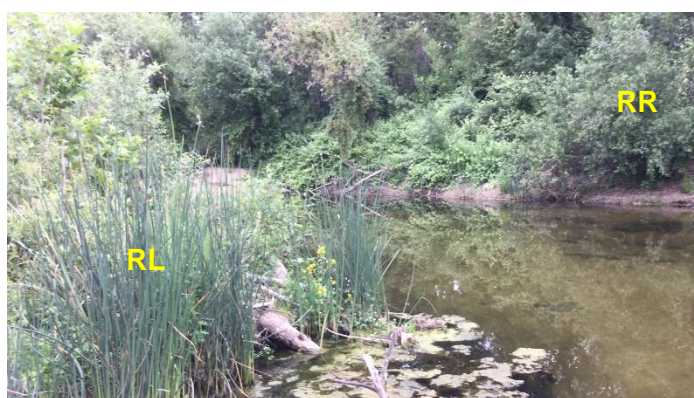
Site Description and Field Notes

Site Location/Segment: MAR-SD-A-010	Site Description and Field Notes: The Santa Margarita River flows under Sandia Creek Road near this site.			
Gradient: Medium	River Width: 20 m (66 ft)	Vehicular Access? All to the site parking lot.	Recreational Use? None	Boat Launches: None
Site Contact/s:	Santa Margarita River Trail Preserve (760) 728-2302			
ESI Shoreline Type:	4-B Sandy bars and beaches with gentle banks			

Site Images



Upstream



Downstream



Trail Access

RR = River Right RL = River Left

Photo Date: 6/4/2019

Site Objectives: Containment

Implementation: Hand deploy boom as needed according to conditions and weather forecast.

Staging Area Location and Capabilities/Amenities/Waste Management: Suitable onsite staging space may be available in the paved parking lot at this site.

Response Strategy Map (overview)

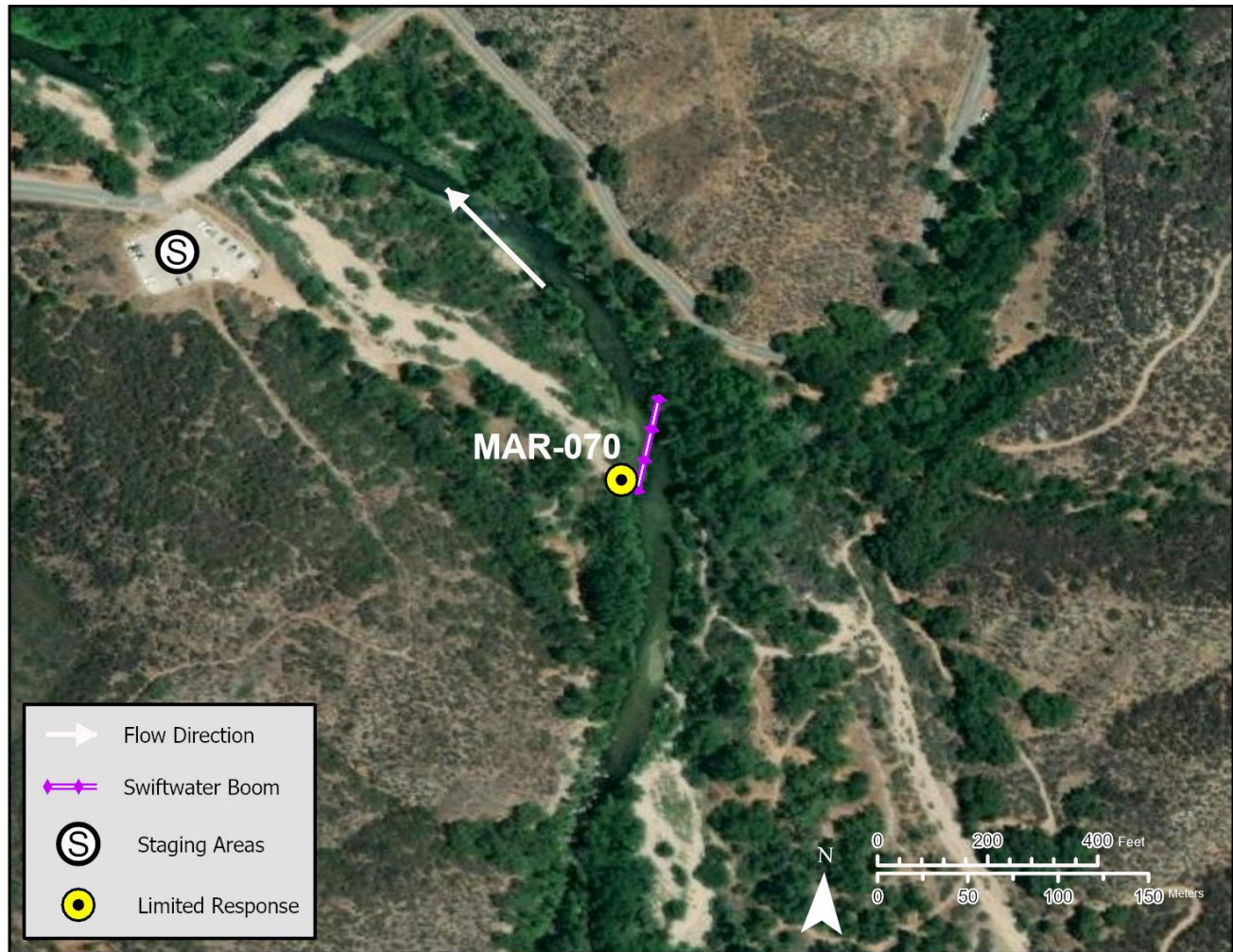


Table of Response Resources

Type	Sub-Type	Size	Unit	QTY - Unit	Special Equipment or Comments
Boom		6	inch	100 feet	
Stakes				4 each	Secure boom in place
Skimmer				1 each	
Personnel				4	