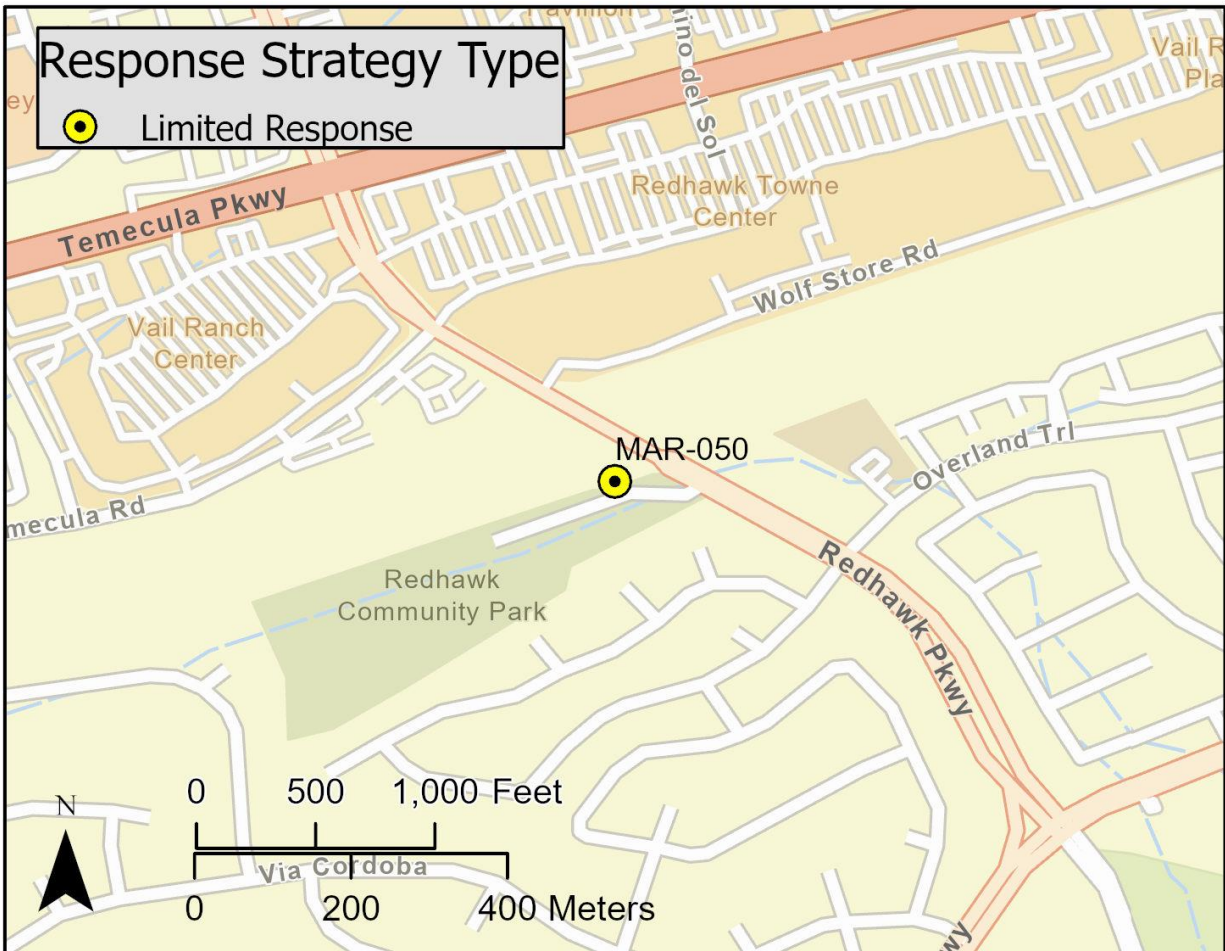


<b>Driving Directions:</b>	Exit I-15 on Highway 79 East and continue inland to Margarita Road/Redhawk Parkway. Turn right on Redhawk Parkway and continue south to the Temecula Creek overcrossing. The site has access for 4WD response equipment at the ramp near the southwest edge of Redhawk Parkway.		
<b>Latitude:</b> 33.4775 <b>Longitude:</b> -117.0983	<b>Highway Postmile:</b> RIV 15 R2.612	<b>Railroad Milepost:</b> N/A	<b>Cell Service:</b> Yes
<b>Nearest Address:</b> 44747 Redhawk Parkway Temecula, CA 92592, <b>Thomas Guide #:</b> 979/E2			

### Overview Street Map



### Hazards, Restrictions and Advice for Responders

The creek is subject to flash flood flows following rainstorms.

### Resources-At-Risk

**Ecological:** Stephens' Kangaroo Rat, Blainville's Horned Lizard, Mesa Horkelia

**Economic:** Redhawk Community Park

**Tribal:** Contact the Native American Heritage Commission at (916) 373-3710

**Cultural and Historic:** Contact the Eastern Information Center at (951) 827-5745

## Site Description and Field Notes

<b>Site Location/Segment:</b> MAR-RV-C-015	<b>Site Description and Field Notes:</b> Temecula Creek at this site has a natural sediment bottom and flows beneath Redhawk Parkway.			
<b>Gradient:</b> Low	<b>River Width:</b> 120 m (400 ft)	<b>Vehicular Access?</b> 4WD Pickup, 5000-gallon vac truck (dry season)	<b>Recreational Use?</b> None	<b>Boat Launches:</b> None
<b>Site Contact/s:</b>	Riverside Co. Flood Control No Fee Access Permit (951) 955-1200 M-F 0800-1700			
<b>ESI Shoreline Type:</b>	4-Sandy bars			

## Site Images



Upstream



Downstream



Straight Across

RR = River Right RL = River Left

Photo Date: 3/3/2020

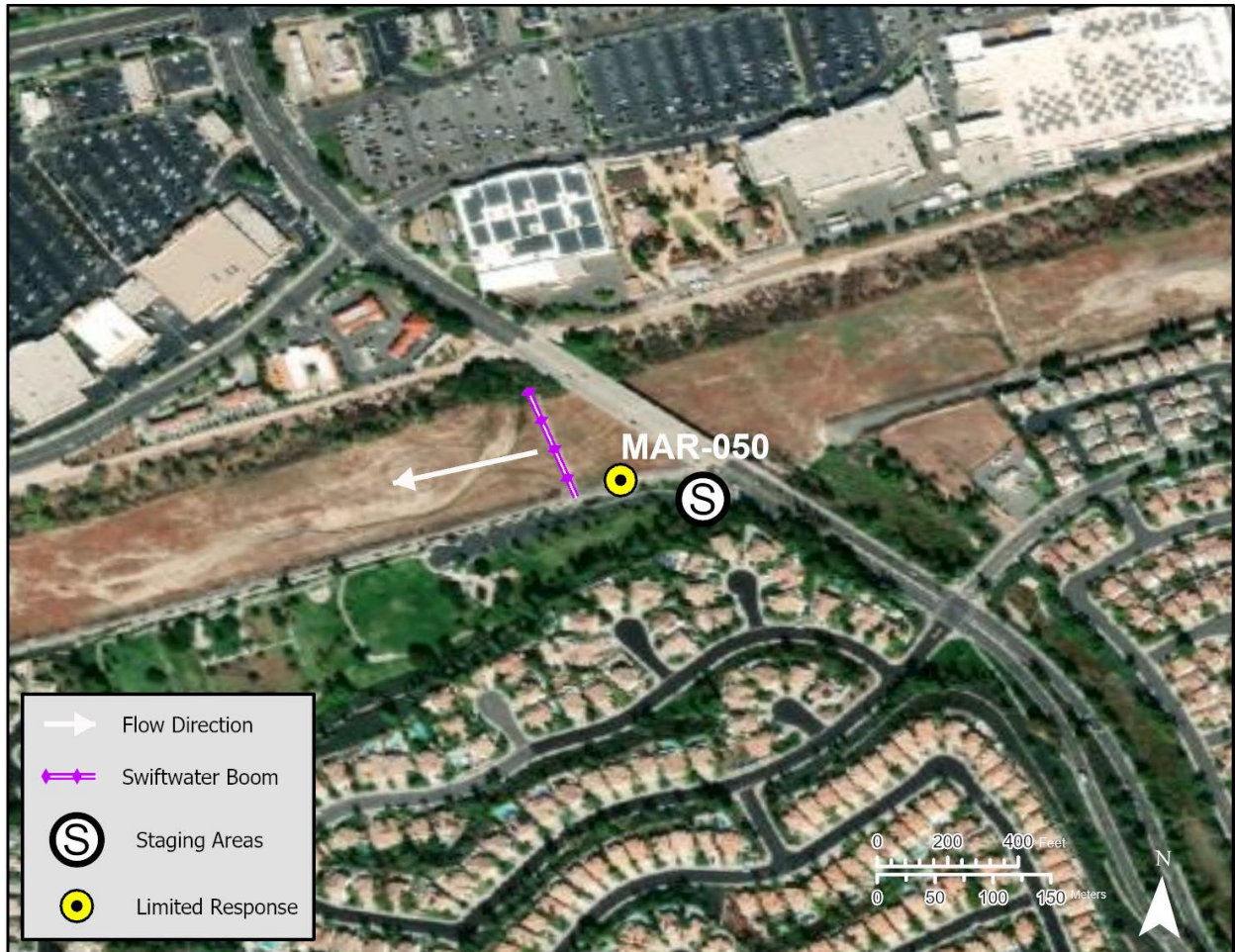


**Site Objectives:** Containment and recovery

**Implementation:** Deploy boom or excavators as needed according to conditions and weather forecast. Collect oil in a dry creek, if possible.

**Staging Area Location and Capabilities/Amenities/Waste Management:** Suitable onsite staging space may be found near the access ramp at the southern edge of Redhawk Parkway, behind a locked gate.

### Response Strategy Map (overview)



**Table of Response Resources**

Type	Sub-Type	Size	Unit	QTY - Unit	Special Equipment or Comments
Boom		6	inch	400 feet	
Stakes				8 each	Secure boom in place
Backhoe					Excavate contaminated soil
Personnel				4	