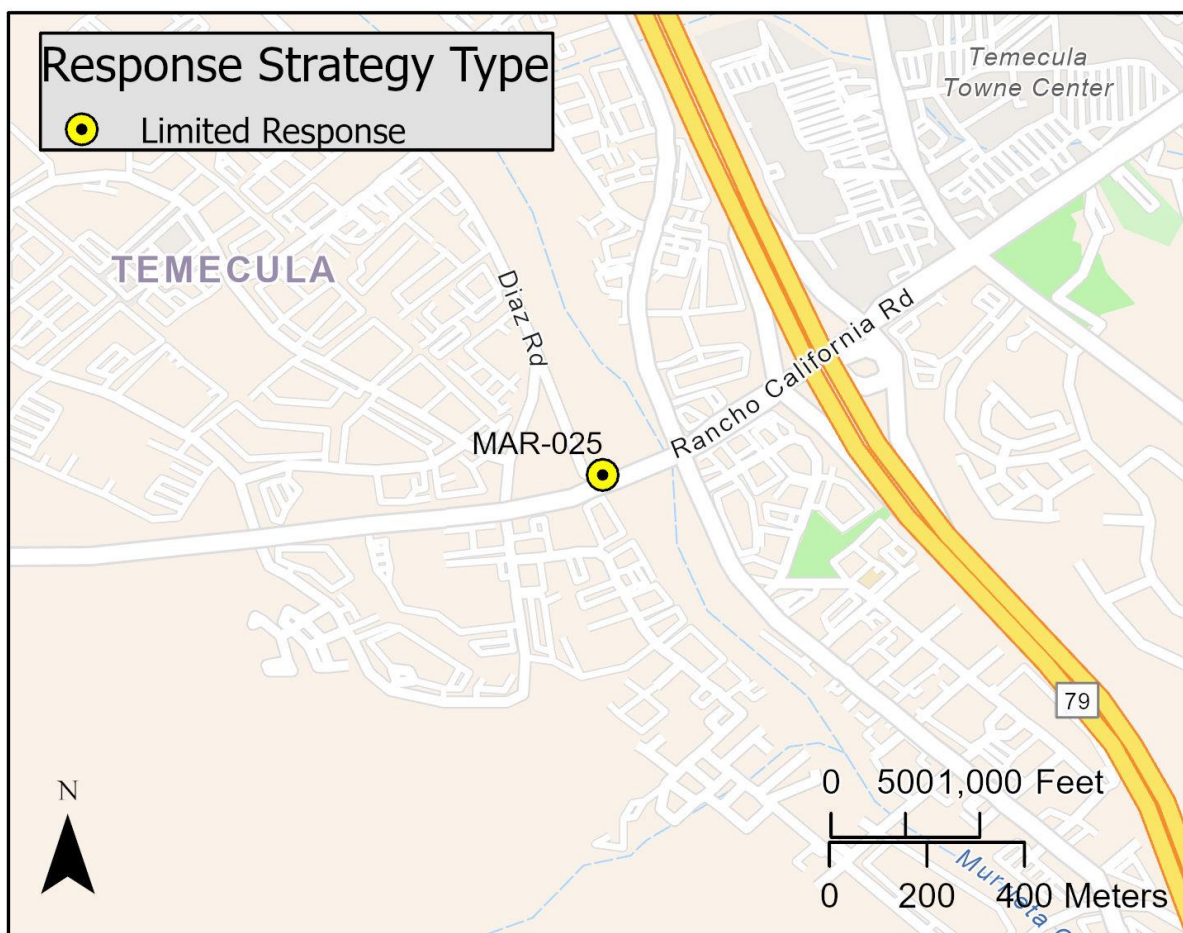


Driving Directions:	Exit I-15 at Rancho California Road and continue west to the Murrieta Creek overpass.		
Latitude: 33.499 Longitude: -177.1548	Highway Postmile: RIV 15 4.982	Railroad Milepost: N/A	Cell Service: Yes

Nearest Address: 28751 Rancho California Rd. Temecula, CA 92590

Thomas Guide #: 958/H7

Overview Street Map



Hazards, Restrictions and Advice for Responders

Rancho California is a very busy road. Access to the creek is down steep banks behind a locked gate.

Resources-At-Risk

Ecological: Least Bell's Vireo, Western Spadefoot Toad, Smooth Tarplant

Economic: N/A

Tribal: Contact the Native American Heritage Commission at (916) 373-3710

Cultural and Historic: Contact the Eastern Information Center at (951) 827-5745

Site Description and Field Notes

Site Location/Segment: MAR-RV-B-005	Site Description and Field Notes: Murrieta Creek at this site has a natural sediment bottom and steep channelized banks.			
Gradient: Low	River Width: 115 m (377 ft)	Vehicular Access? None	Recreational Use? None	Boat Launches: None
Site Contact/s:	Riverside Co. Flood Control No Fee Access Permit (951) 955-1200 M-F 0800-1700			
ESI Shoreline Type:	9B-Vegetated low banks, 10B-Freshwater marsh			

Site Images



Upstream



Downstream



Straight Across

RR = River Right RL = River Left

Photo Date: 1/23/2020

Site Objectives: Containment

Implementation: Hand deploy boom from the bridge to stop oil movement downstream.

Staging Area Location and Capabilities/Amenities/Waste Management: With traffic control, staging space may be available adjacent to the creek near the intersection of Rancho California and Diaz Roads.

Response Strategy Map (overview)

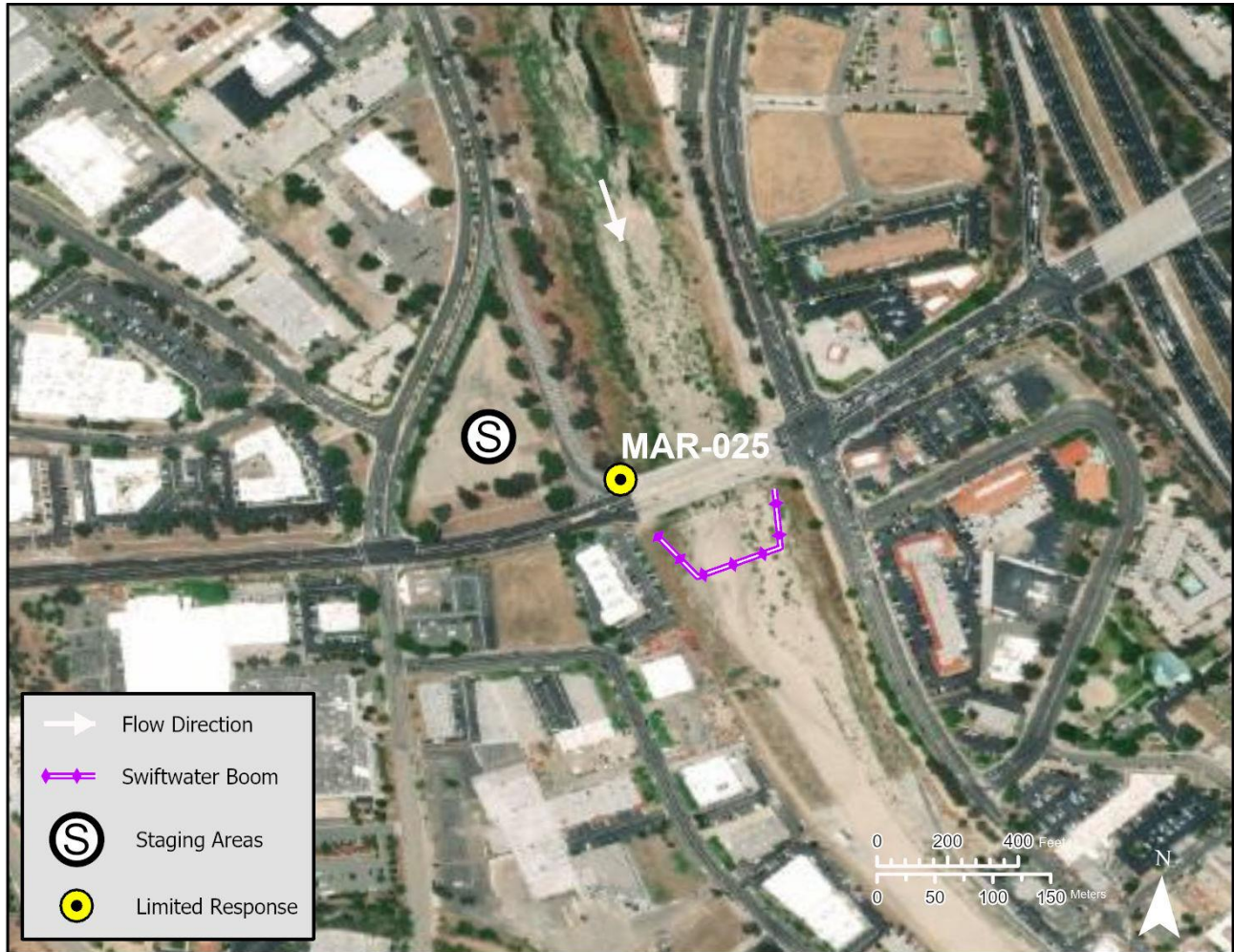


Table of Response Resources

Type	Sub-Type	Size	Unit	QTY - Unit	Special Equipment or Comments
Boom		8	inch	500 feet	
Watergate					
Stakes				4	Anchor boom in place with stakes
Personnel				4	