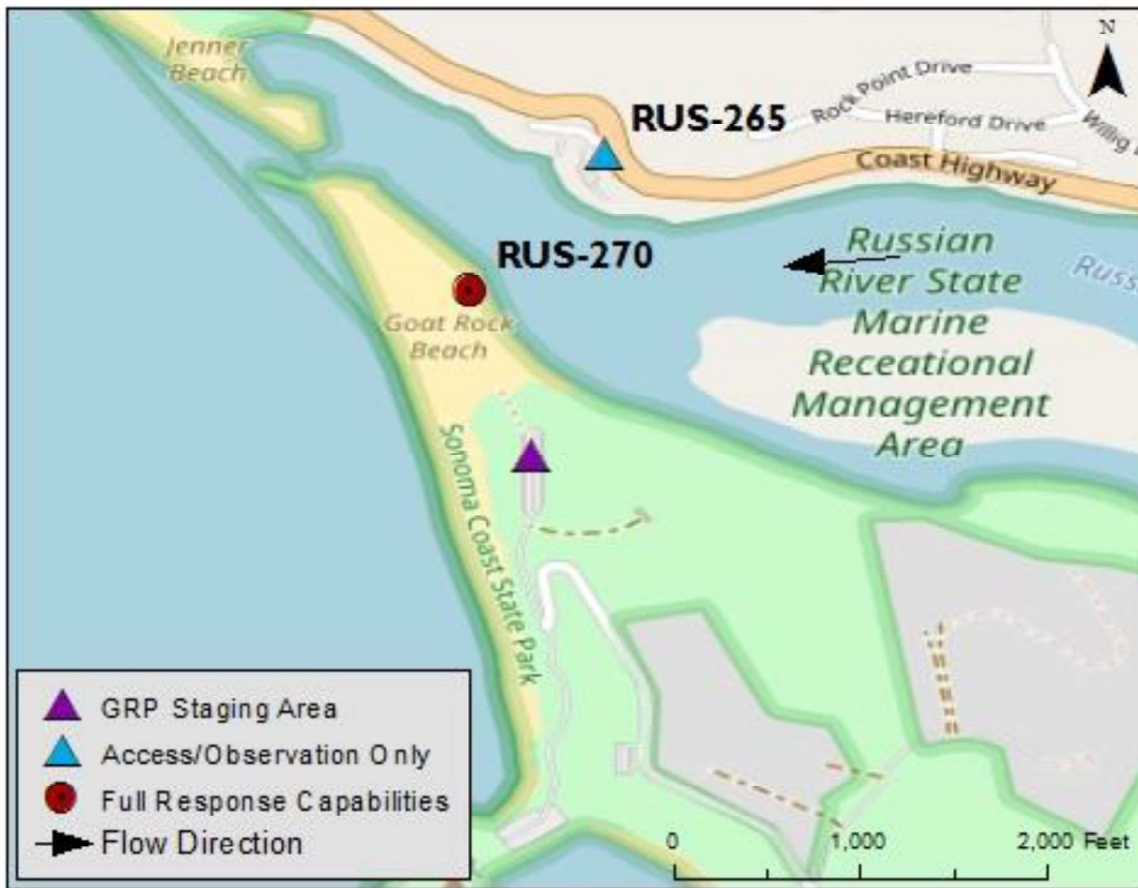


Latitude: 38.44662 Longitude: -123.12601	Driving Directions
Highway Postmile: N/A	From Highway 1, south of Jenner, take Goat Rock exit and proceed ~1.8mi to the end of the road at Goat Rock Beach Access. The Russian River is on the eastside of the beach, with ocean on the west side.
Railroad Milepost: N/A	
Nearest Address: Thomas Guide #: 173/1B	
Cell Service: Yes	

Overview Street Map



Hazards, Restrictions and Advice for Responders

- Property is managed by California State Parks
- Gate to enter park is open from 8am to sunset
- Heavy surf and wave action on the outer coast
- Seal haul-out area on the beach at the river mouth
- Trip and fall hazards, slippery when icy or wet

Resources-At-Risk

Ecological: longfin smelt, Chinook salmon, coho salmon, steelhead trout, Russian River tule perch, Myrtle's silverspot butterfly, bluff wallflower, perennial goldfields, Tidestrom's lupine

Economic: River's End Restaurant & Inn

Tribal: Contact the Native American Heritage Commission at (916) 373-3710.

Cultural and Historic: Contact the Northwest Information Center at (707) 664-0880.



Site Description and Field Notes

River Width: 275 meters
(902 feet)

Gradient: Low

Site Contact/s:

CA State Parks Dispatch
(916) 358-0333

CA State Parks Russian
River District Office
(707) 865-2394

Site Location/Segment: RUS-SN-F-030

South side of the mouth of the Russian River. Mouth of the river may be closed during times of low flow (i.e., summer months). Large sandy beach. Seal haul out/pupping area. Marshes are on both banks of the river. Large parking area and bathroom facilities. This is also an environmentally sensitive site (2-122-A Russian River Inlet) in the San Francisco Bay & Delta Area Contingency Plan (ACP).

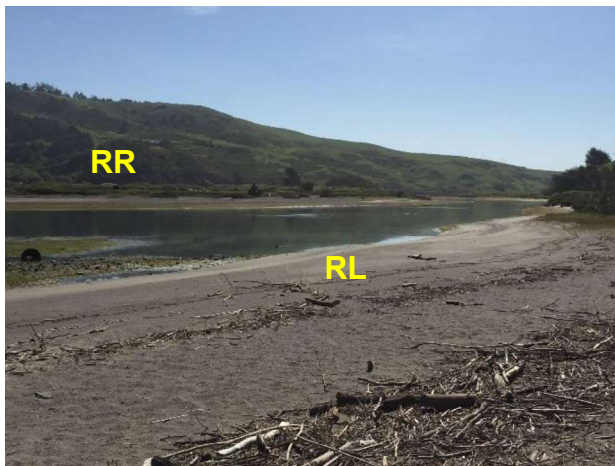
Vehicular Access: 4WD Pick-Up, ATV

Recreational Use: Rafting, Beaches

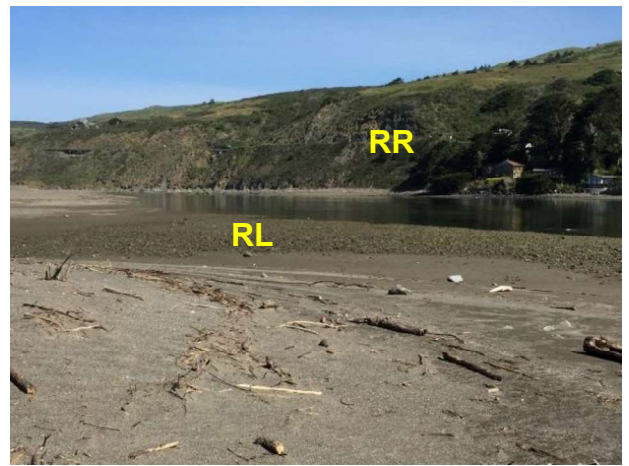
Boat Launches: Sonoma Coast Visitor Center in Jenner (RUS-260)

ESI Shoreline Type: 4 – Sandy beach and gently sloping banks

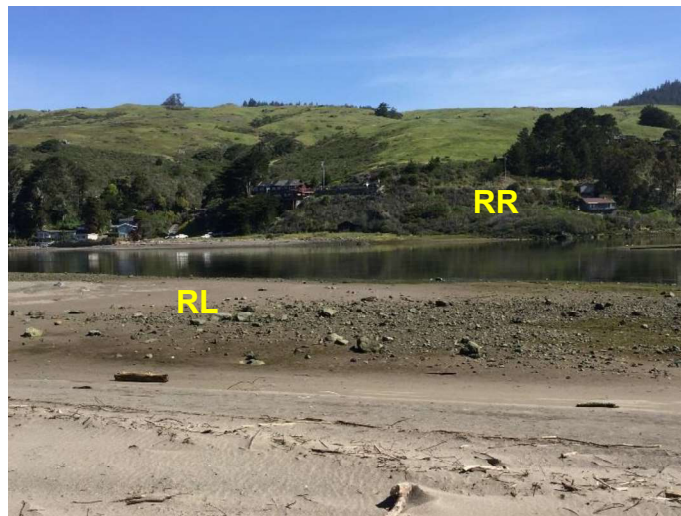
Site Images



Upstream



Downstream



Straight Across

RR = River Right RL = River Left

Photo Date: 05/01/2018

Site Objectives: Prevent spread of product to river by exclusion and/or collection.

Implementation: 1. Under low flow conditions, neap tides, non-stormy seas – construct a sediment dike across the river mouth (to be done when the spill is coming from the marine environment); 2. If circumstances dictate that the berm cannot be built, deploy boom to collect product on the south side of the channel (Can be implement for a spill originating in the marine or riverine environment).

Staging Area Location and Capabilities/Amenities/Waste Management: Large parking area is located at the State Park

Response Strategy Map (overview)



Table of Response Resources

Type	Sub-Type	Size	Unit	QTY - Unit	Special Equipment or Comments
Boom	Harbor	36	in	1200 feet	
Anchor	Danforth	25	lb	12	
Stakes				6	To use to anchor the boom to the shore
Boat	skiffs	16	ft	3	
Staff				12	6 – boat staff, 6 – shore side staff