

**Latitude:** 38.46532  
**Longitude:** -123.04987

### Driving Directions

**Highway Postmile:** N/A

From Highway 116 (in Monte Rio), turn left onto Bohemian Highway then turn right onto Main Street. Take a left on Moscow Road and continue for ~2.5mi. Turn right into Casini Ranch and follow Stagecoach Road down to the river.

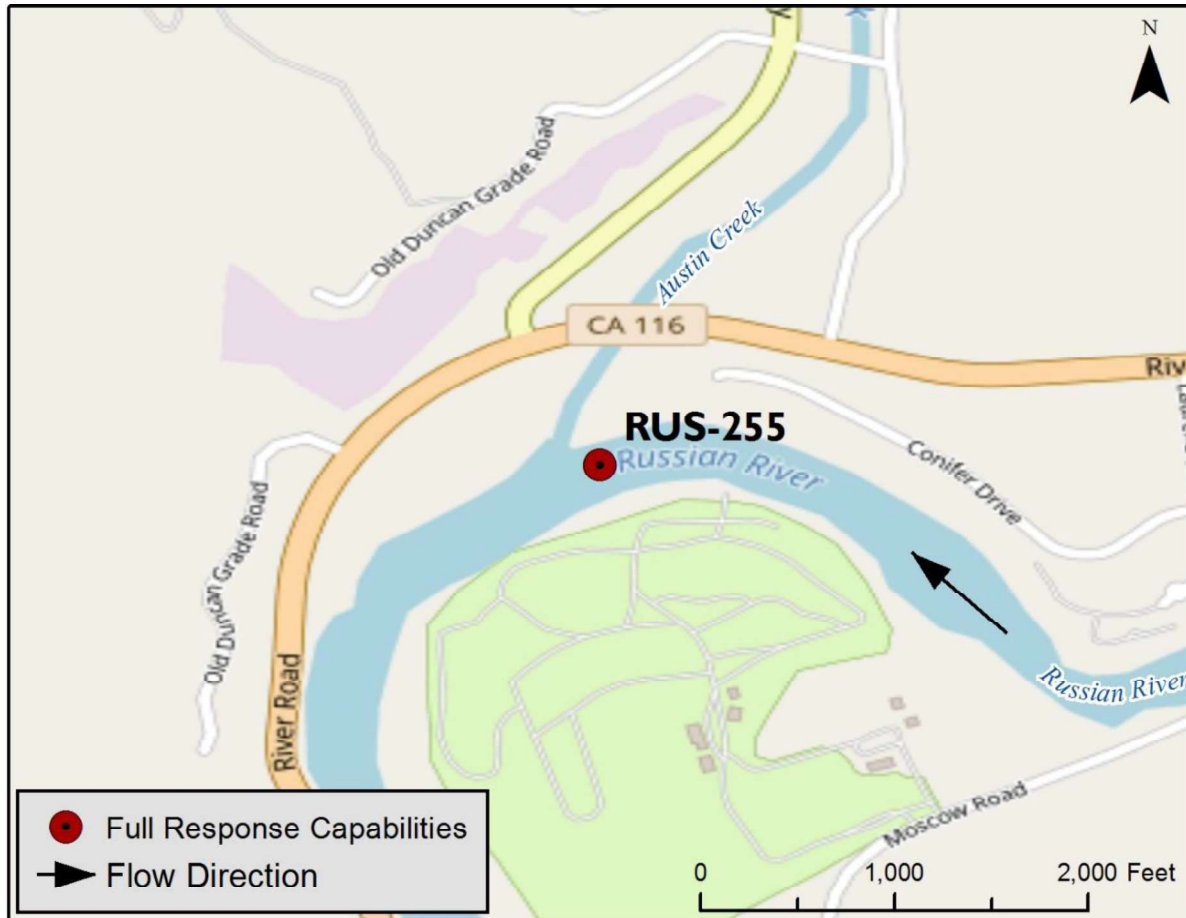
**Railroad Milepost:** N/A

**Nearest Address:** 22855 Moscow Rd.,  
Duncan Mills 95430

**Thomas Guide #:** 173/1B

**Cell Service:** Yes

### Overview Street Map



### Hazards, Restrictions and Advice for Responders

- Shoreline is through a privately-run campground
- Large parking spaces and facilities on-site
- Vehicle must stop at check-in station
- Trip and fall hazards, slippery when icy or wet

### Resources-At-Risk

**Ecological:** Foothill Yellow-legged Frog, Chinook salmon, coho salmon, steelhead trout, Russian River tule perch

**Economic:** Casini Ranch Family Campground, St. Joseph's Camp

**Tribal:** Contact the Native American Heritage Commission at (916) 373-3710.

**Cultural and Historic:** Contact the Northwest Information Center at (707) 664-0880.



## Site Description and Field Notes

**River Width:** 80 meters  
(262 feet)

**Gradient:** Medium

**Site Contact/s:**

Casini Ranch Campground  
(800) 451-8400

**Site Location/Segment:** RUS-SN-E-065

Private campground with a couple of beach areas. Facilities are located on site. Large parking areas. High recreational use area. Beach width varies depending on water flow/time of year.

**Vehicular Access:** 4WD Pick-Up

**Recreational Use:** Campground. Rafting, Fishing, Beaches

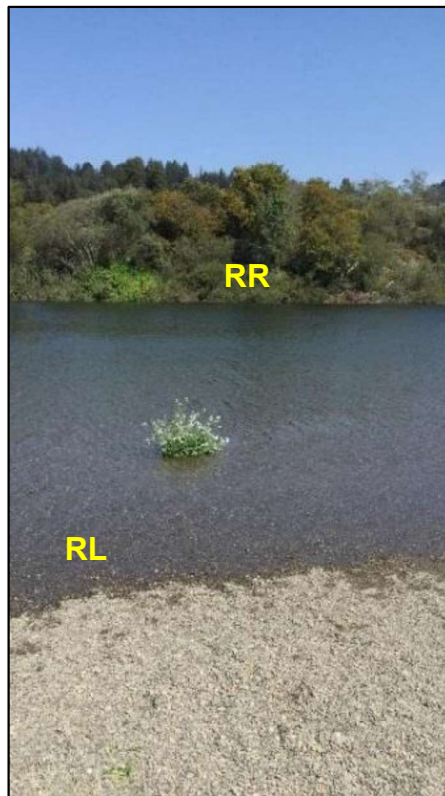
**Boat Launches:** May be able to launch boat from shore; Launch upstream at Monte Rio Beach or downstream from Jenner boat launch

**ESI Shoreline Type:** 5 – mixed sand and gravel beaches and gently sloping banks; 9B – vegetated low banks

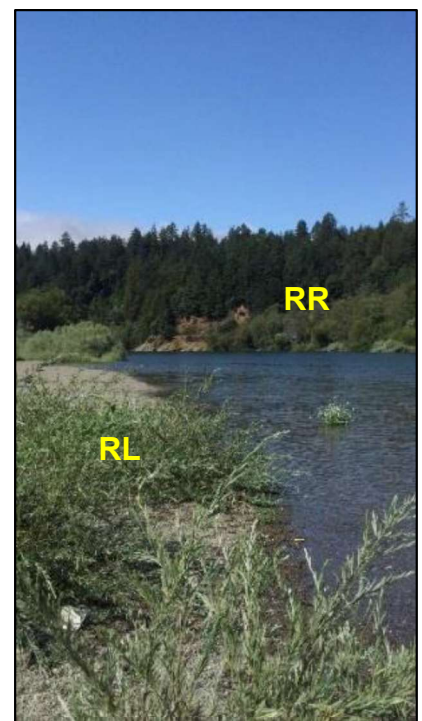
## Site Images



Upstream



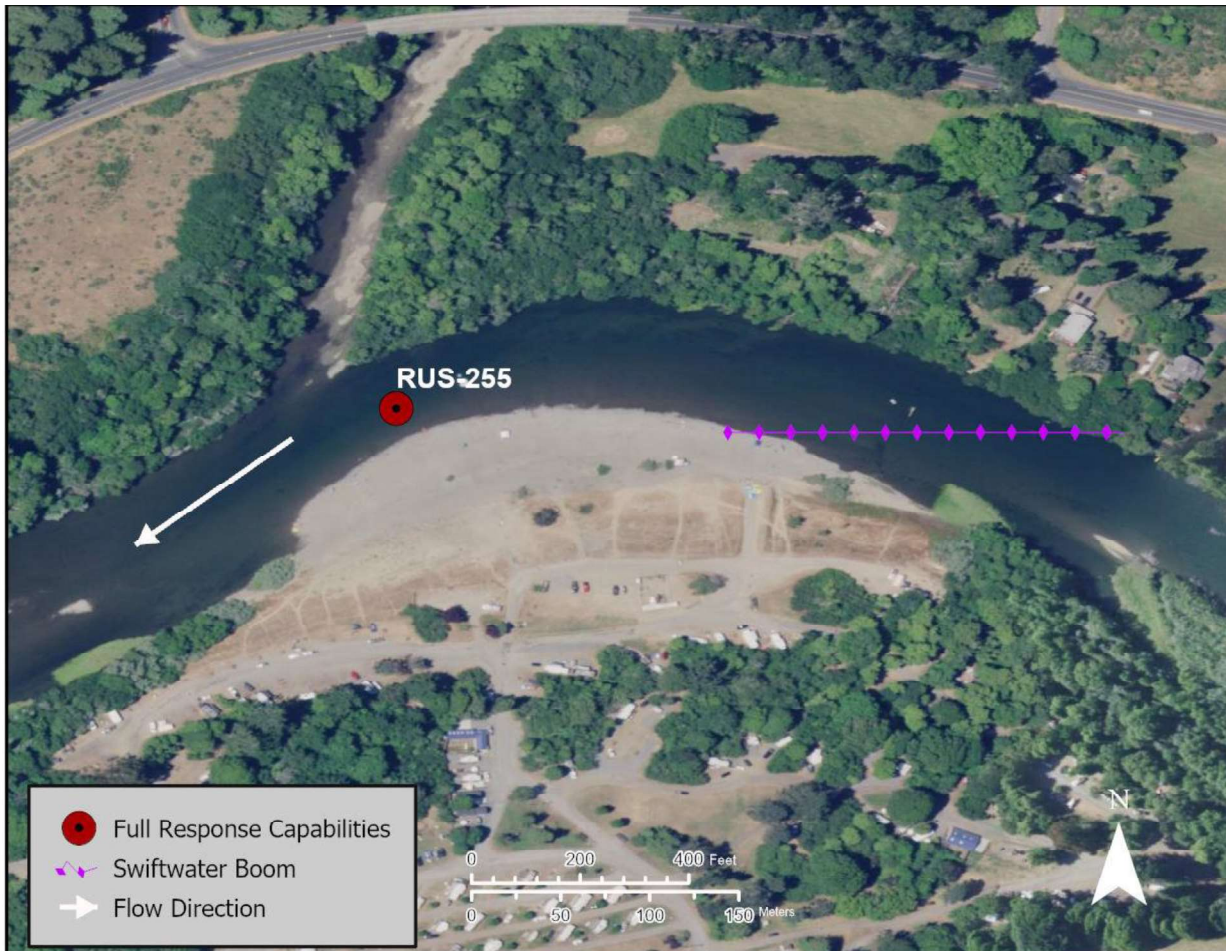
Straight Across



Downstream

RR = River Right RL = River Left

Photo Date: 08/22/2017

**Site Objectives:** Collection**Implementation:** Avoid snags in the middle of the river; anchor boom near staircase on the NE side of the river**Staging Area Location and Capabilities/Amenities/Waste Management:** 70 bbl vac truck could be staged here**Response Strategy Map (overview)****Table of Response Resources**

Type	Sub-Type	Size	Unit	QTY - Unit	Special Equipment or Comments
Boom	Swiftwater	8	inch	400 feet	
Anchoring	Danforth	40	lb	2	
Stakes				3	To secure boom to shoreline
Boat	Skiff	16	ft	2	
Personnel				8	4 boat crew, 4 shore side staff