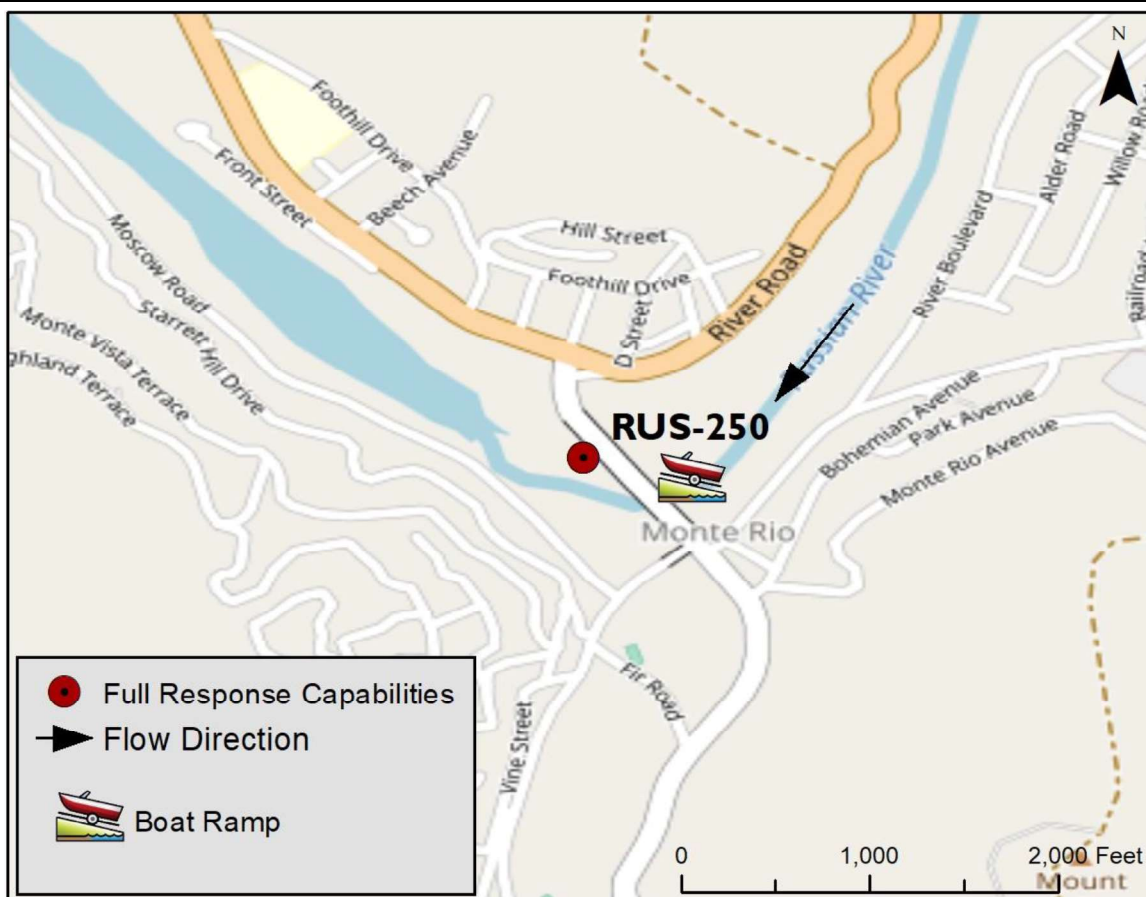


Latitude: 38.46655 Longitude: -123.01085	Driving Directions Going west on Highway 116 (when entering the town of Monte Rio), turn left onto Bohemian Highway, then take an immediate right into the Monte Rio Fishing Access parking lot. Proceed to the beach through a gate, which is open during daylight hours in the summer months, to a kayak rental facility.
Highway Postmile: SON 7.778	
Railroad Milepost: N/A	
Nearest Address: 20488 Highway 116, Monte Rio 95462 Thomas Guide #: 173/1B	
Cell Service: Yes	

Overview Street Map



Hazards, Restrictions and Advice for Responders

- Area maintained by Monte Rio Park & Recreation District
- Boat launch on-site
- Trip and fall hazards, slippery when icy or wet
- High use recreational beach, rafting, and fishing area

Resources-At-Risk

Ecological: Chinook salmon, coho salmon, steelhead trout, Russian River tule perch, Greene's narrow-leaved daisy

Economic: Monte Rio Beach, Rio Villa Beach Resort, Village Inn & Restaurant

Tribal: Contact the Native American Heritage Commission at (916) 373-3710.

Cultural and Historic: Contact the Northwest Information Center at (707) 664-0880.



Site Description and Field Notes

River Width: 30 meters (98 feet)	Site Location/Segment: RUS-SN-E-065 The beach area is >300m long and >30m wide. East of Monte Rio Bridge is known, locally, as Big Rock Beach. There are kayak and canoe rentals here during the summer. The parking lot is only open seasonally and closes at 8pm. West of the bridge is known as Sandy Beach, which can be accessed from the upper parking area. Dutch Bill Beach is across the river from Sandy Beach. It is accessible from Main St. Vehicular Access: 4WD Pick-Up Recreational Use: Rafting, Fishing, Beaches Boat Launches: Boat launch on-site ESI Shoreline Type: 5 – mixed sand and gravel beaches and gently sloping banks; 9B – vegetated low banks
Gradient: Low	
Site Contact/s: Monte Rio Park & Recreation District (707) 865-2487	

Site Images



Upstream



Downstream



Straight Across

RR = River Right RL = River Left

Photo Date: 05/24/2017

Site Objectives: Collection

Implementation: Deploy strategy on east side of bridge

Staging Area Location and Capabilities/Amenities/Waste Management: Boat launch on site and large parking area, though boats may need to be launched from shore east of bridge due to [possible] flow and water level concerns.

Response Strategy Map (overview)

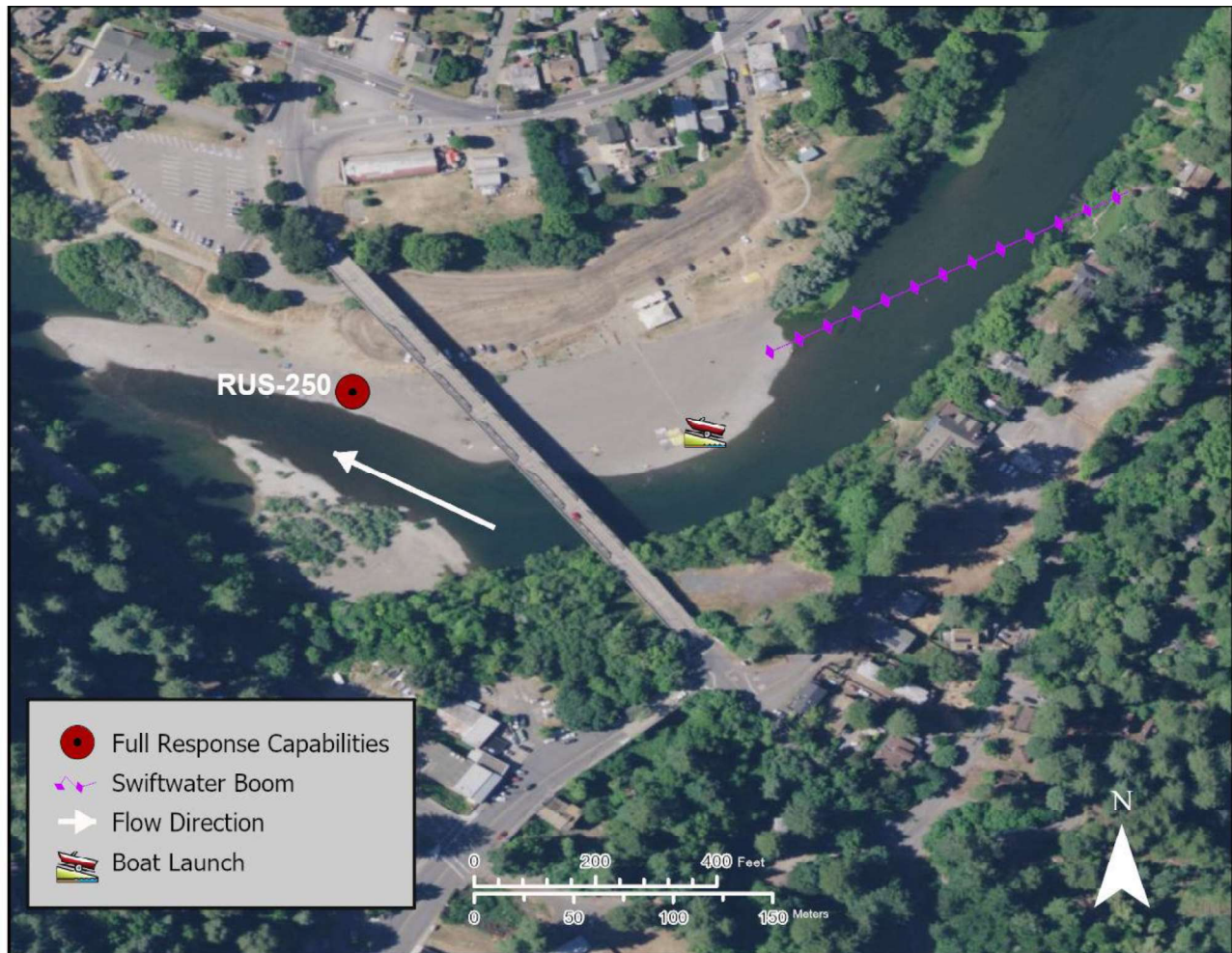


Table of Response Resources

Type	Sub-Type	Size	Unit	QTY - Unit	Special Equipment or Comments
Boom	Swiftwater	8	inch	400 feet	
Anchor	Danforth	40	lb	2	Mid-stream anchors
Stakes				3	Secure boom to shoreline
Boat	Skiff	16	ft	2	
Personnel				8	4 boat crew, 4 shore side