

Latitude: 38.48337
Longitude: -123.01091

Driving Directions

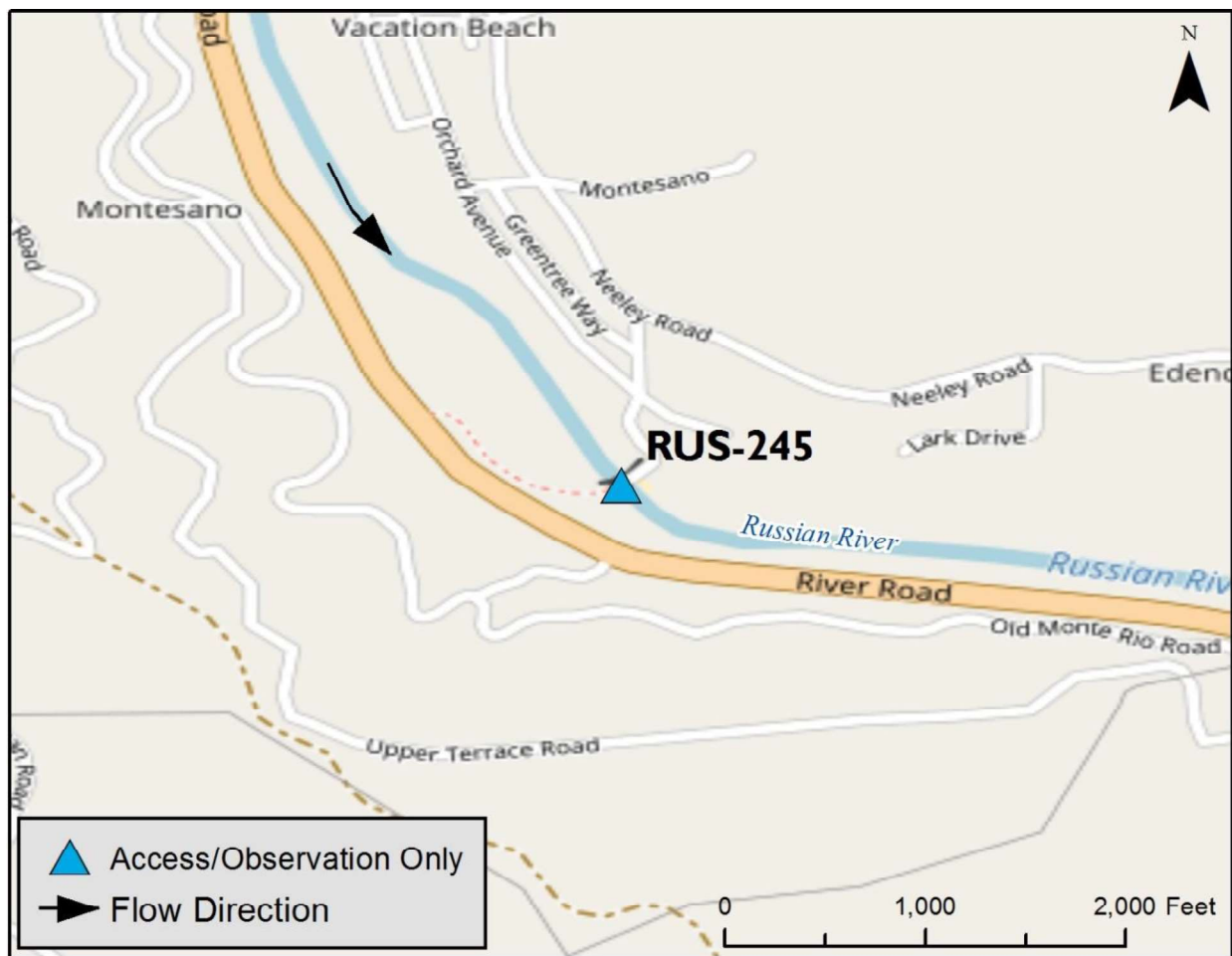
Highway Post Mile: SON 9.796

Head west on Highway 116/River Road and proceed approximately 1.7mi southwest of Guerneville. Take a left on Summer Bridge road. Parking is along the side of the road next to the seasonal bridge. This road is closed during times of high flow.

Railroad Milepost: N/A

Nearest Address:
Thomas Guide #: 168/3B

Cell Service: Yes

Overview Street Map**Hazards, Restrictions and Advice for Responders**

- Swift water during winter and spring flows
- Parking along the side of the road
- Trip and fall hazards, slippery when icy or wet
- Access to the shoreline is difficult when road is closed, due to debris (e.g., downed trees, mud, etc.)

Site Description and Field Notes

Site Location/Segment: RUS-SN-E-025

This site has a seasonal bridge and dam that is in place from late spring through summer. The road is closed when the bridge is not in place. The shoreline is sandy on both side of the river. The river has a medium gradient in this location and has a width of ~50 meters.

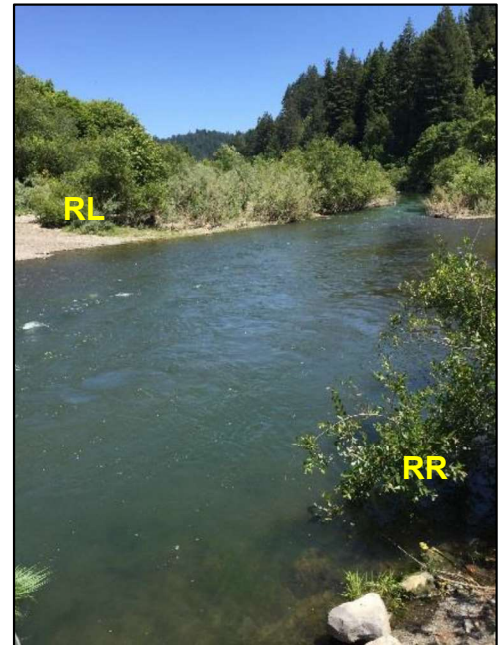
Site Contact/s:

Russian River Recreation & Park District – (707) 869-9184

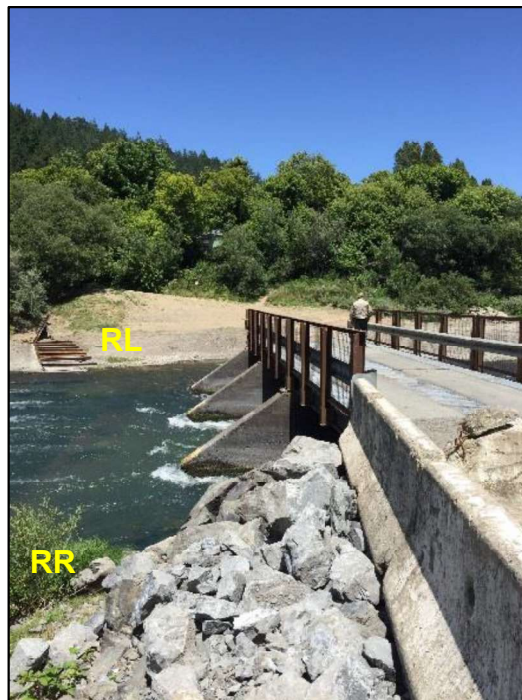
Site Images



Upstream



Downstream



Straight Across

RR = River Right RL = River Left

Photo Date: 06/06/2017