

Latitude: 38.50006

Longitude: -122.99750

Driving Directions

Highway Postmile: SON R12.036

From River Rd, heading southwest through Guerneville, continue straight onto Highway 116. Turn left onto Church Street and follow it to the end.

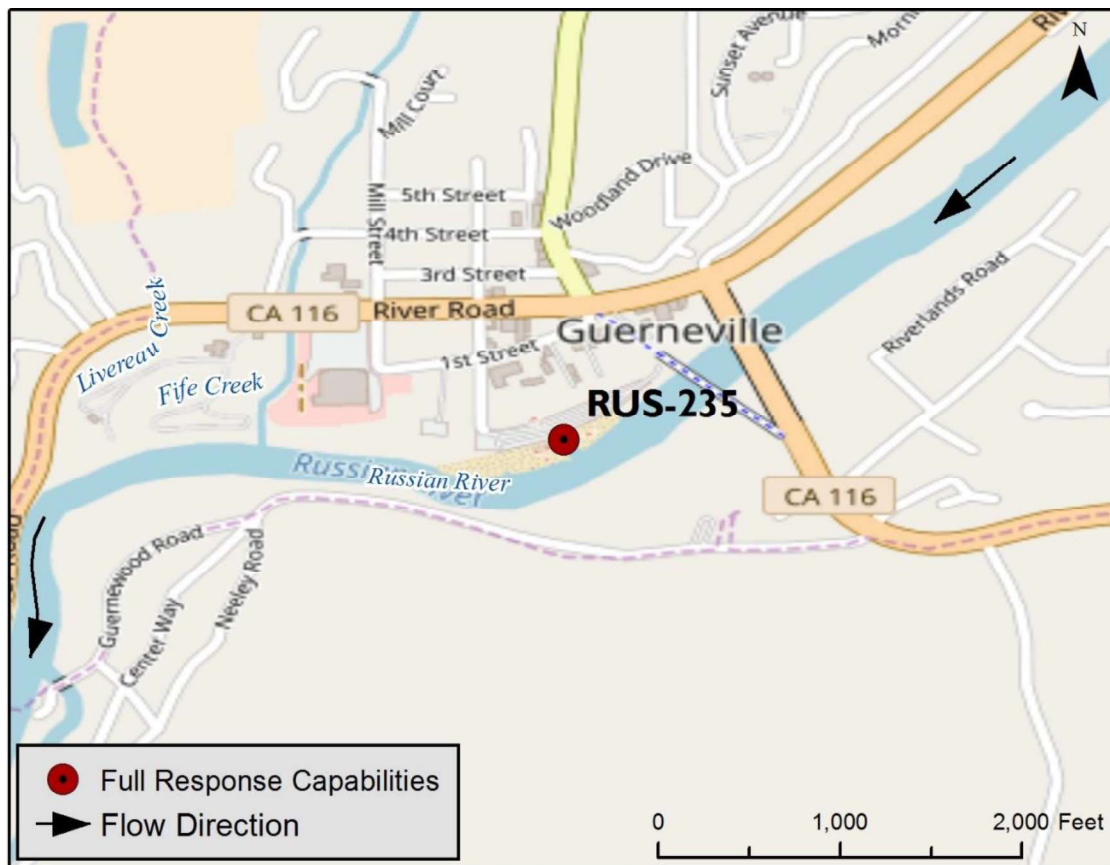
Railroad Milepost: N/A

Nearest Address: 16215 First St.,
Guerneville 95446

Thomas Guide #: 168/3B

Cell Service: Yes

Overview Street Map



Hazards, Restrictions and Advice for Responders

- Area maintained by Russian River Recreation and Park District
- Access to launch boats (off the beach) is through a locked gate during certain times of the year: 5/20 – 6/16 (weekends only), 6/16 – 9/7 (daily), 9/15 – 9/23 (weekends only)
- Trip and fall hazards, slippery when icy or wet
- High use recreational beach, rafting, and fishing area
- Dam is located toward western end of the beach

Resources-At-Risk

Ecological: Western Pond Turtle, Chinook salmon, coho salmon, steelhead trout, Russian River tule perch, holly-leaved ceanothus, Napa false indigo

Economic: Johnson's Beach, Guerneville River Park

Tribal: Contact the Native American Heritage Commission at (916) 373-3710.

Cultural and Historic: Contact the Northwest Information Center at (707) 664-0880.

Site Description and Field Notes

River Width: 50 meters
(164 feet)

Gradient: Medium

Site Contact/s:

Russian River Recreation
and Park District
(707) 869-9184

Site Location/Segment: RUS-SN-D-055

High recreational use beach area with a large mixed sand shoreline. The area is operated by the Russian River Recreation and Park District. Parking area is closed October 1 through May 15.

Vehicular Access: 4WD Pick-Up

Recreational Use: Rafting, Fishing, Beaches

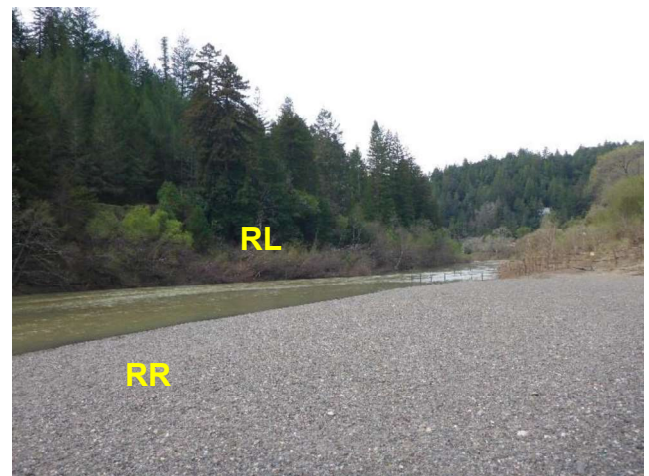
Boat Launches: Can launch boat from shore

ESI Shoreline Type: 5 – Mixed sand and gravel beaches and gently sloping banks; 9B – vegetated low banks

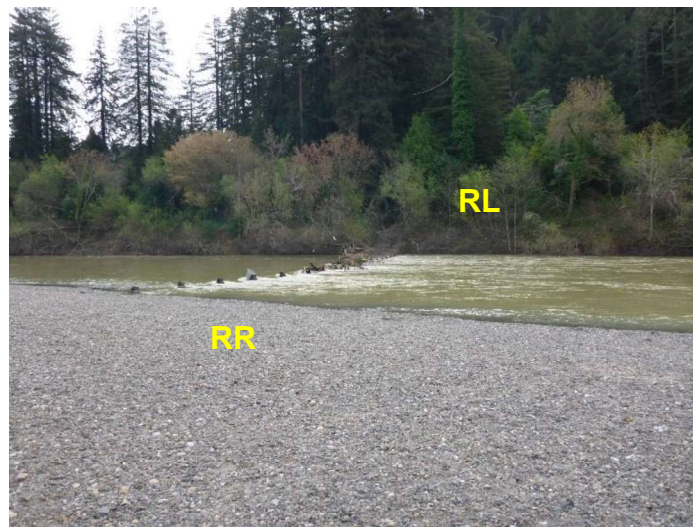
Site Images



Upstream



Downstream



Straight Across

RR = River Right RL = River Left

Photo Date: 03/15/2017

Site Objectives: Collection

Implementation: Primary collection point upstream of dam, secondary collection point downstream

Staging Area Location and Capabilities/Amenities/Waste Management: No facilities on site; 120 bbl vac truck and Adler tanks could be staged here.

Response Strategy Map (overview)

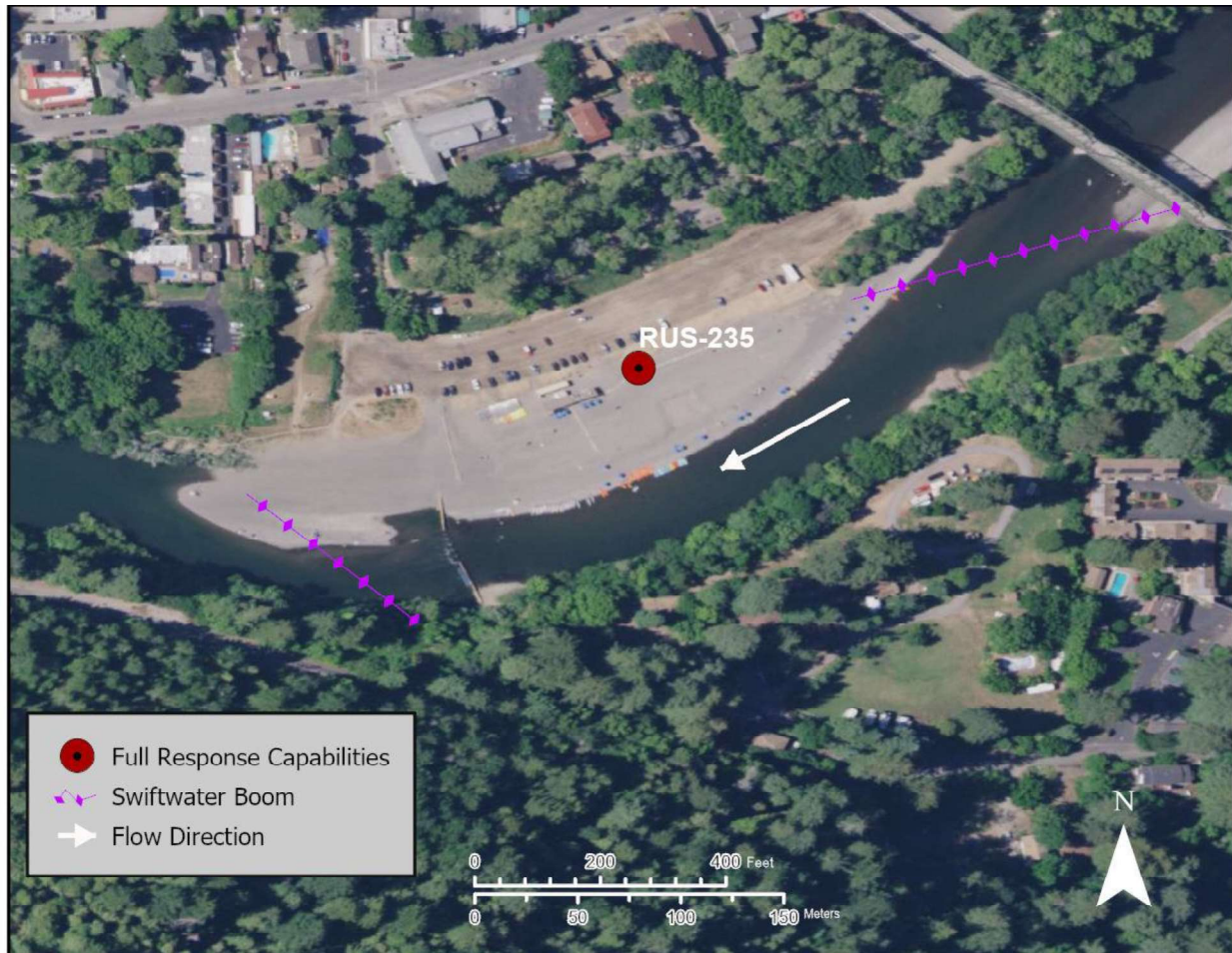


Table of Response Resources

Type	Sub-Type	Size	Unit	QTY - Unit	Special Equipment or Comments
Boom	Swiftwater	8	inch	800 feet	
Anchors	Danforth	40	lb	5	3 midstream anchors for upstream strategy
Boat	Whaler	18	ft	2	
Stakes				6	Use to secure boom to shore
Personnel				8	4 boat crew, 4 shoreside