



Latitude: 38.50000

Longitude: -122.89966

Driving Directions

Highway Postmile: N/A

From Hwy 101, Take exit 494 west onto Mark West Springs Rd (going toward Guerneville). Continue straight on River Road for ~ 8.2mi. Turn right at Trenton Rd through the entrance to Steelhead Beach.

Railroad Milepost: N/A

Nearest Address: 9000 River Rd.,
Forestville 95436

Thomas Guide #: 242/1A**Cell Service:** No

Overview Street Map



Hazards, Restrictions and Advice for Responders

- Area maintained by Sonoma County Regional Parks
- Access to boat launch through a locked gate
- Trip and fall hazards, slippery when icy or wet
- High use recreational beach, rafting, and fishing area

Resources-At-Risk

Ecological: Western Pond Turtle, Chinook salmon, coho salmon, steelhead trout, Russian River tule perch

Economic: Steelhead Beach Regional Park, Burke's Canoe Trips

Tribal: Contact the Native American Heritage Commission at (916) 373-3710.

Cultural and Historic: Contact the Northwest Information Center at (707) 664-0880.



Site Description and Field Notes

River Width: 40 meters
(131 feet)

Gradient: Low

Site Contact/s:

Sonoma County Regional
Park Ranger Station
(707) 433-1625

Site Location/Segment: RUS-SN-D-020

Gently sloping beach with direct vehicle access. High use recreational site. Large parking area

Vehicular Access: 4WD Pick-Up

Recreational Use: Rafting, Fishing, Beaches

Boat Launches: Can launch canoes and kayaks year-round from the beach. Launching of larger watercrafts is available from October through mid-May

ESI Shoreline Type: 5 – Mixed sand and gravel beach and gently sloping banks; 9B – Vegetated low banks

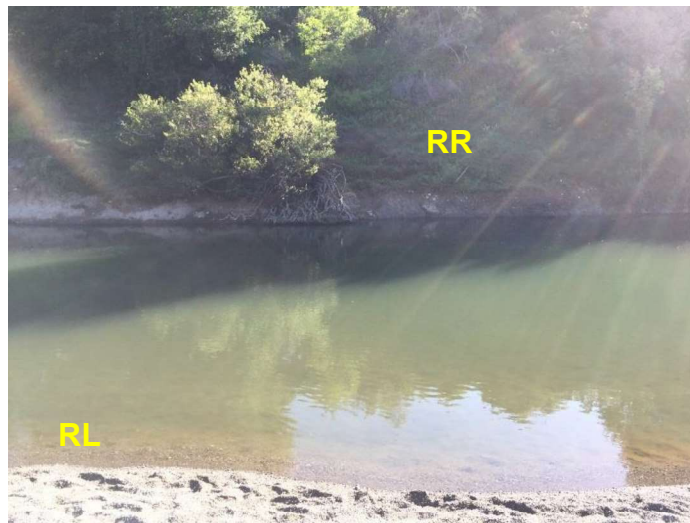
Site Images



Upstream



Downstream



Straight Across

RR = River Right RL = River Left

Photo Date: 05/01/2018



Site Objectives: Collection

Implementation: Deploy boom for collection on the southern portion of the beach

Staging Area Location and Capabilities/Amenities/Waste Management: 70 bbl vac truck and adler tanks could be staged here

Response Strategy Map (overview)

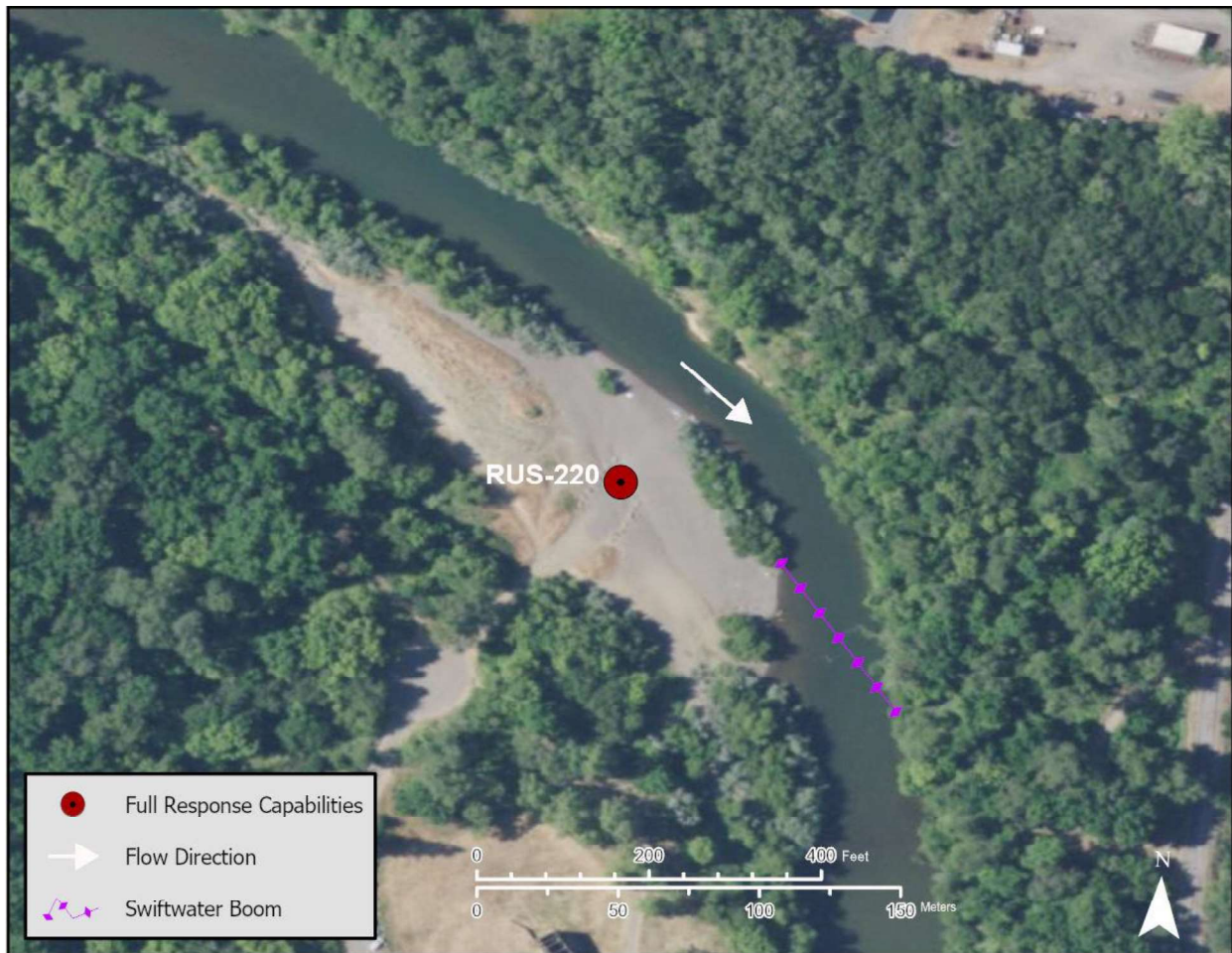


Table of Response Resources

Type	Sub-Type	Size	Unit	QTY - Unit	Special Equipment or Comments
Boom	Swiftwater	8	inch	700 feet	Under "normal" flow conditions 400 ft would be sufficient; under high flow, decrease the angle/increase the length of boom necessary (by 300ft)
Anchor	Danforth	40	lb	2	Use 2 midstream anchors
Stakes				3	Use stakes to secure boom to shoreline
Boat	whaler	17	ft	2	
Personnel				8	4 boat crew, 4 shore side staff