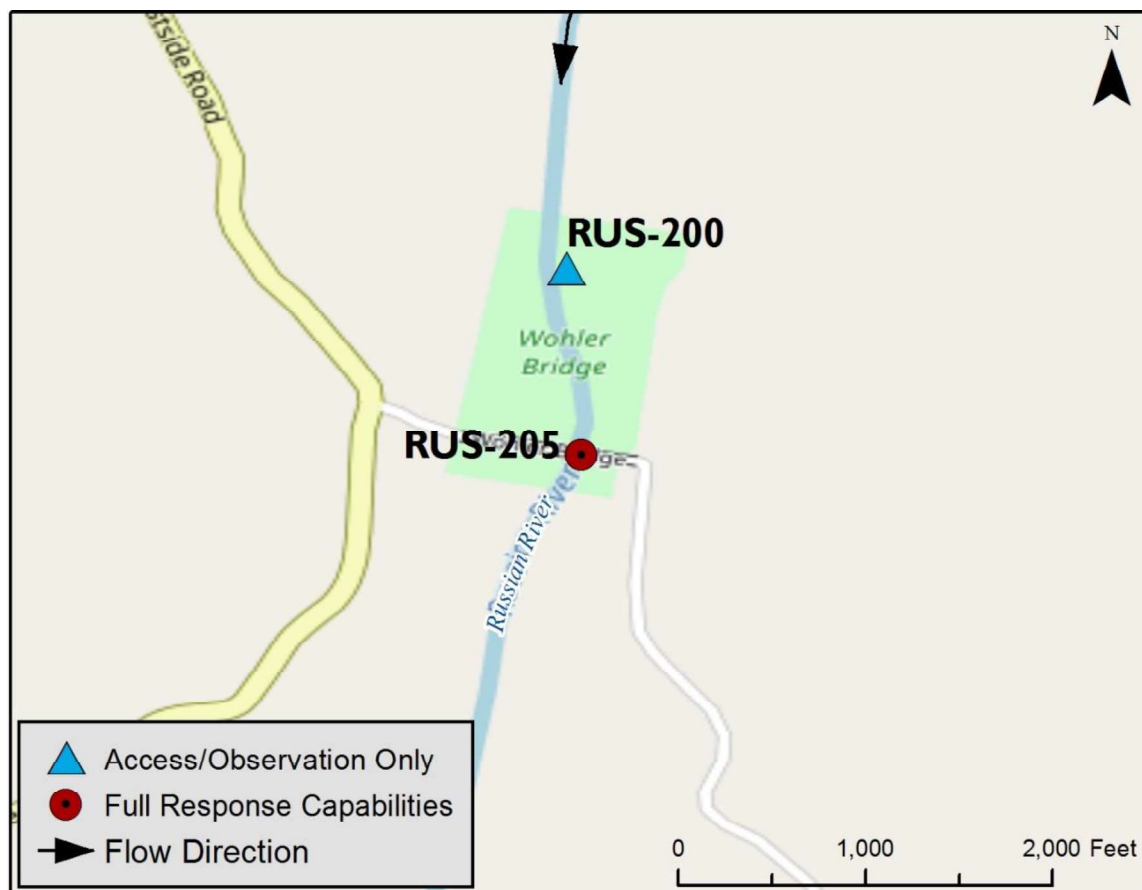


Latitude: 38.50741 Longitude: -122.88338	Driving Directions From the north: Take Hwy 101 south to the Westside Rd./Mill St. exit in Healdsburg, head west and then south on Westside Rd. Turn left on Wohler Rd., then cross Wohler Bridge. Take a left and proceed east past a locked gate until the dirt road terminates. Follow this road towards the water. From the south: Take Hwy 101 north to the River Rd./Mark West Springs Rd. exit near Fulton. Turn left onto River Rd. and travel west. Turn right on Trenton-Healdsburg Rd., followed by a right onto Eastside Rd. Make a right onto Wohler Rd. and proceed to the Wohler Bridge.
Highway Postmile: N/A	
Railroad Milepost: N/A	
Nearest Address: 9765 Wohler Road, Forestville 95446 Thomas Guide #: 242/1A	
Cell Service: Intermittent	

Overview Street Map**Hazards, Restrictions and Advice for Responders**

- Area maintained by Sonoma County Regional Parks
- Swift water during winter and spring flows
- Access to boat launch through a locked gate
- Trip and fall hazards, slippery when icy or wet
- High use recreational fishing area

Resources-At-Risk

Ecological: Western Pond Turtle, Foothill Yellow-legged Frog, Chinook salmon, coho salmon, steelhead trout, Russian River tule perch

Economic: Wohler Bridge Fishing Access

Tribal: Contact the Native American Heritage Commission at (916) 373-3710.

Cultural and Historic: Contact the Northwest Information Center at (707) 664-0880.



Site Description and Field Notes

River Width: 60 meters
(197 feet)

Gradient: Medium

Site Contact/s:

Sonoma Co Regional Park
Ranger Station
(707) 433-1625

Site Location/Segment: RUS-SN-D-005

Recreational fishing area. Operated and maintained by Sonoma County Regional Parks. Approximately 300 meters of exposed sandy shoreline, depending on water level.

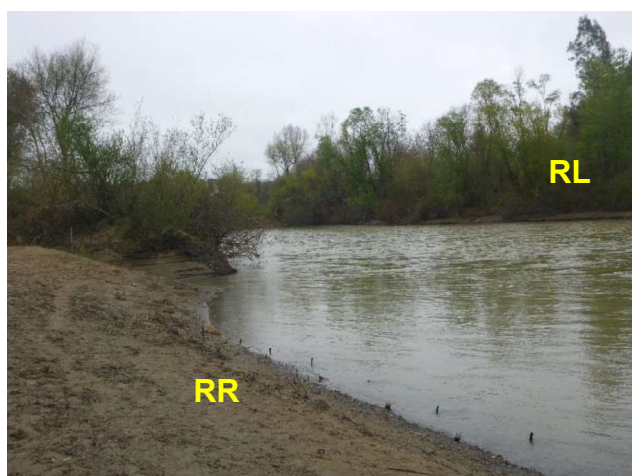
Vehicular Access: 4WD Pick-Up

Recreational Use: Rafting, Fishing

Boat Launches: Seasonal boat launch (October 1 – May 15)

ESI Shoreline Type: 4 – Sandy beach and gently sloping banks; 9B – vegetated low banks

Site Images



Upstream



Downstream



Straight Across

RR = River Right RL = River Left

Photo Date: 03/15/2017



Site Objectives: Collection

Implementation: Collect product on west side of river.

Staging Area Location and Capabilities/Amenities/Waste Management: 70 bbl vac truck could be staged here

Response Strategy Map (overview)

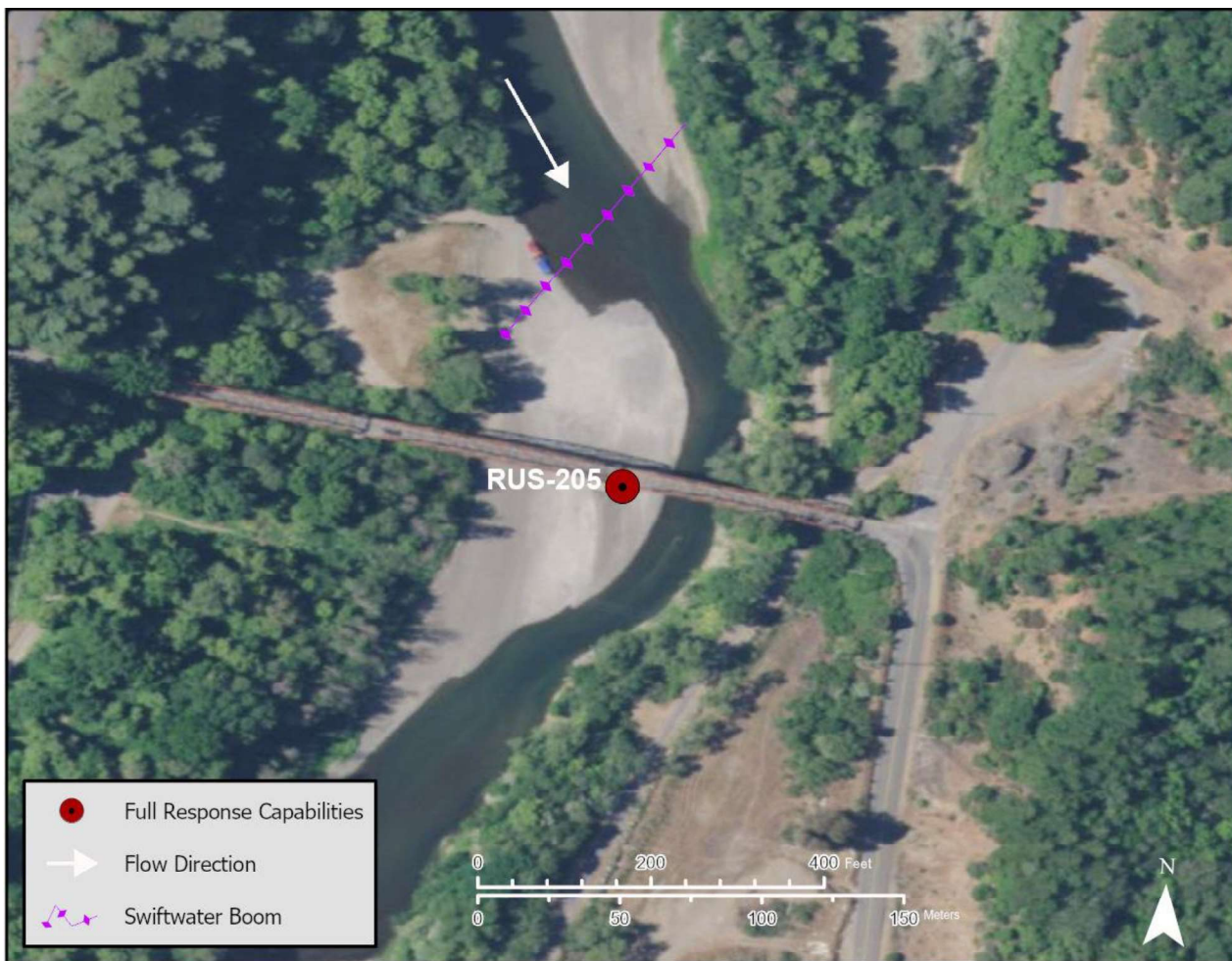


Table of Response Resources

Type	Sub-Type	Size	Unit	QTY - Unit	Special Equipment or Comments
Boom	Swiftwater	8	inch	300 feet	
Anchor	Danforth	40	lb	4	4 midstream anchors
Stakes				3	To use to secure boom to shoreline
Boat	Skiffs	16	ft	2	Use skiffs to get across river to deploy boom
Personnel				6	4 boat crew, 2 shore side crew