



Latitude: 38.82319

Longitude: -123.01019

## Driving Directions

Highway Postmile: N/A

From Highway 101, take exit 522 east onto Hwy 128/N Redwood Hwy. Take a right on McCray Rd and continue to the Cloverdale River Park entrance.

Railroad Milepost: N/A

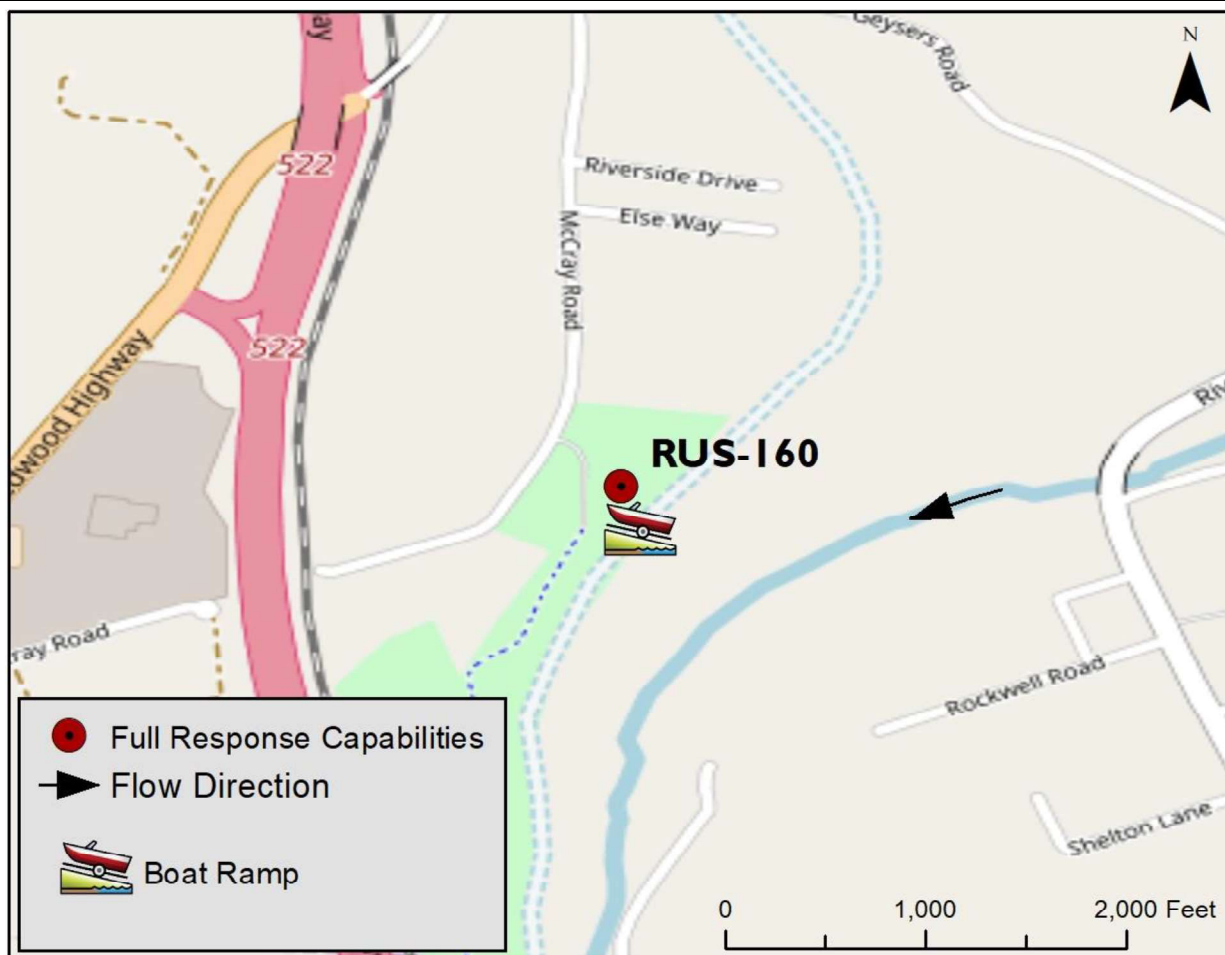
## Nearest Address:

31820 McCray Rd., Cloverdale 95425

Thomas Guide #: 239/2D

Cell Service: Yes

## Overview Street Map



## Hazards, Restrictions and Advice for Responders

- Park is open from 7am to sunset
- Access through a locked gate
- Trip and fall hazards, slippery when icy or wet

## Resources-At-Risk

**Ecological:** Western Pond Turtle, Chinook salmon, coho salmon, steelhead trout, Russian River tule perch

**Economic:** Sonoma County Regional Park

**Tribal:** Contact the Native American Heritage Commission at (916) 373-3710.

**Cultural and Historic:** Contact the Northwest Information Center at (707) 664-0880.



## Site Description and Field Notes

**River Width:** 25 meters  
(82 feet)

**Gradient:** Low

**Site Contact/s:**

Ranger Station  
(707) 433-1625

**Site Location/Segment:** RUS-SN-A-020

This is a county park with only ~ 20-30 yds of accessible [by foot] shoreline. This site is heavily vegetated on both sides of the river.

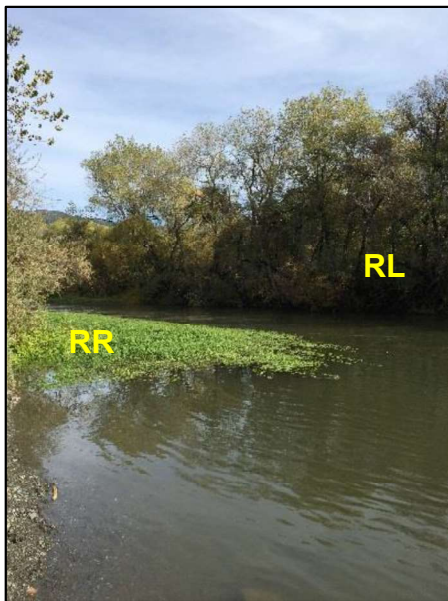
**Vehicular Access:** You can drive a vehicle to the water's edge on the boat ramp.

**Recreational Use:** Rafting, Fishing, etc.

**Boat Launches:** Boat launch on site

**ESI Shoreline Type:** 6A – gravel beaches and gently sloping banks; 9B – vegetated low banks

## Site Images



Upstream



Downstream



Straight Across

RR = River Right RL = River Left

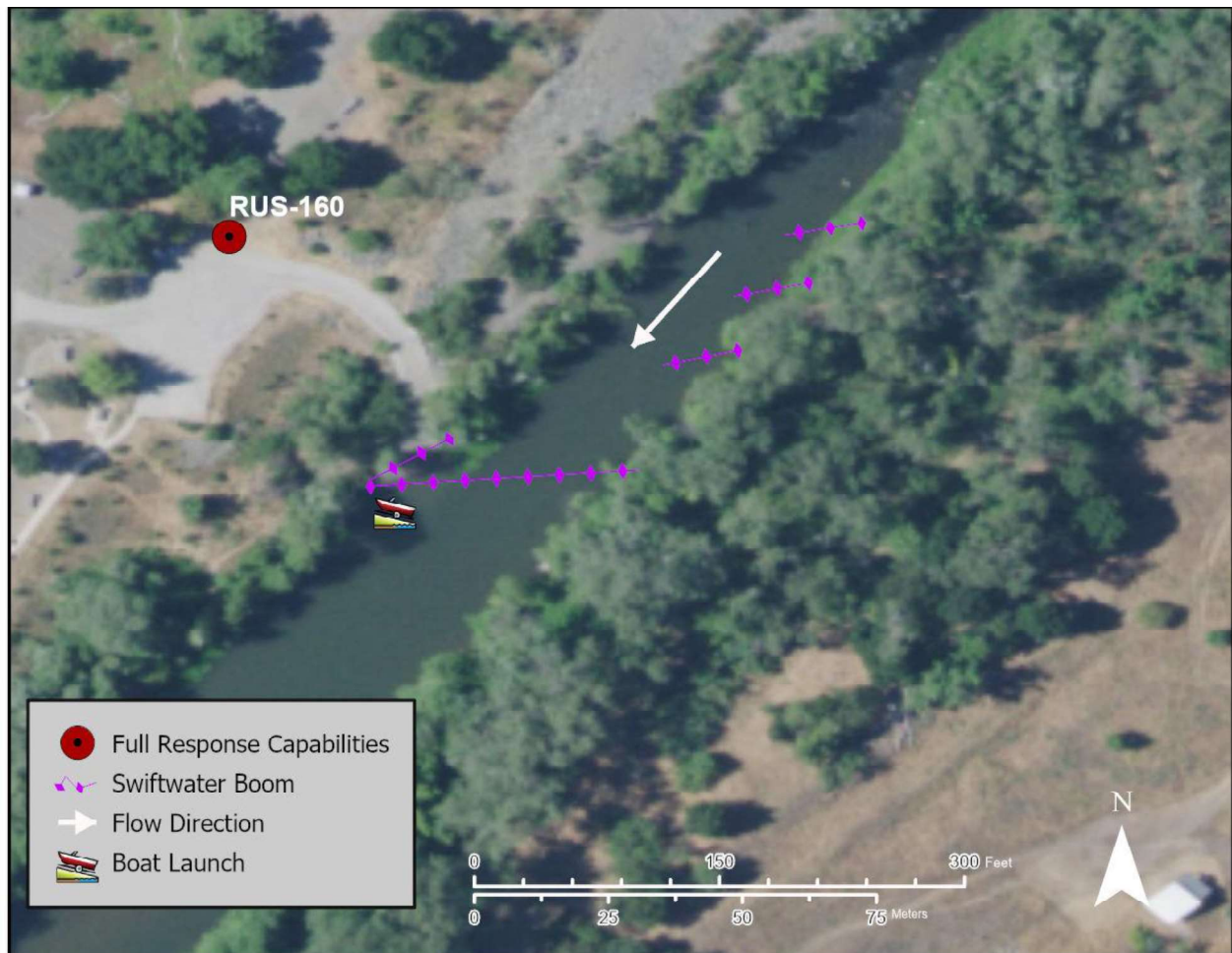
Photo Date: 11/21/2017

**Site Objectives:** Deflection/collection

**Implementation:** Deploy cascades upstream of collection strategy.

**Staging Area Location and Capabilities/Amenities/Waste Management:** Staging can be done in the associated parking lot. Room for 70 bbl vac truck.

### Response Strategy Map (overview)



**Table of Response Resources**

Type	Sub-Type	Size	Unit	QTY - Unit	Special Equipment or Comments
Boom	Swiftwater	8	inch	550 feet	400ft for the collection "J"; 50ft for each deflection leg
Anchor	Danforth	40	lb	5	1 anchor for each deflection leg; 2 mid-stream anchors for deflection "J"
Stakes				3	Stakes for shore-side anchoring
Boats	whaler	17	ft	2	
Personnel				8	4 boat crew, 4 shore-side