

Latitude: 38.97113
Longitude: -123.10813

Driving Directions

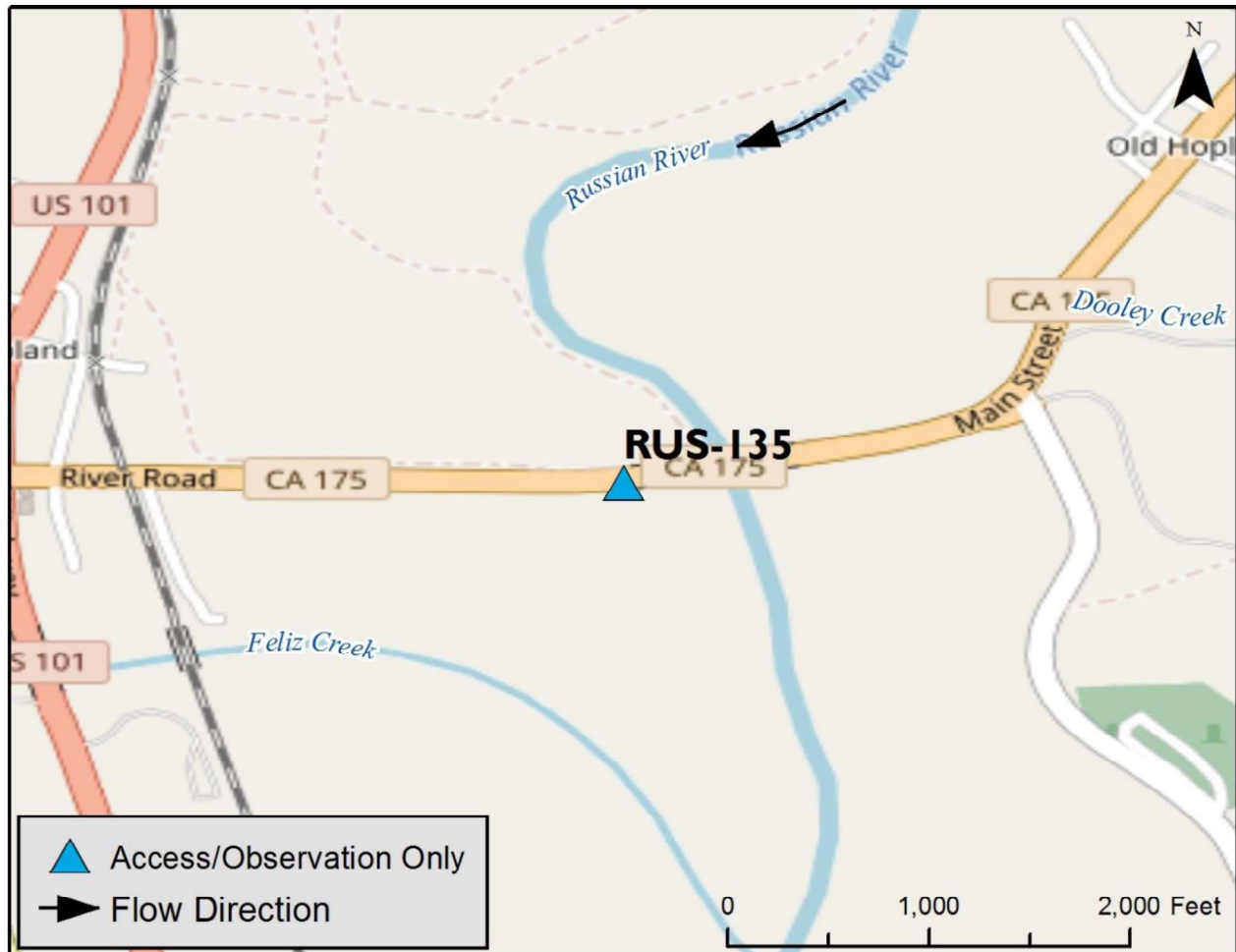
Highway Post Mile: MEN 0.4

From Hwy 101, proceed east on Hwy 175 for ~ 0.5mi until you come to a small bridge. Use pullout on the SW side of the bridge.

Railroad Milepost: N/A

Nearest Address:
Thomas Guide #: 162/2B

Cell Service: Yes

Overview Street Map**Hazards, Restrictions and Advice for Responders**

- Parking on the side of a busy road
- Trip and fall hazards, slippery when icy or wet
- Pathway to shoreline is steep and can be muddy in certain areas
- Biological hazards (e.g., poison oak)

Site Description and Field Notes

Site Location/Segment: RUS-MN-B-020

Observation point is just east of Hopland. Shoreline is heavily vegetated on both sides with only ~10 yds of vegetation free shoreline on the west bank. The water moves slow on this stretch of the river, though the river widens to ~25 meters.

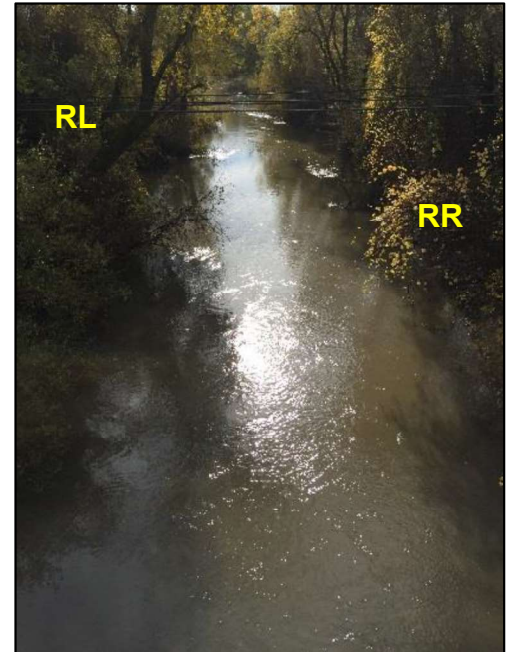
Site Contact/s:

Hopland Fire District – (707) 744-1222

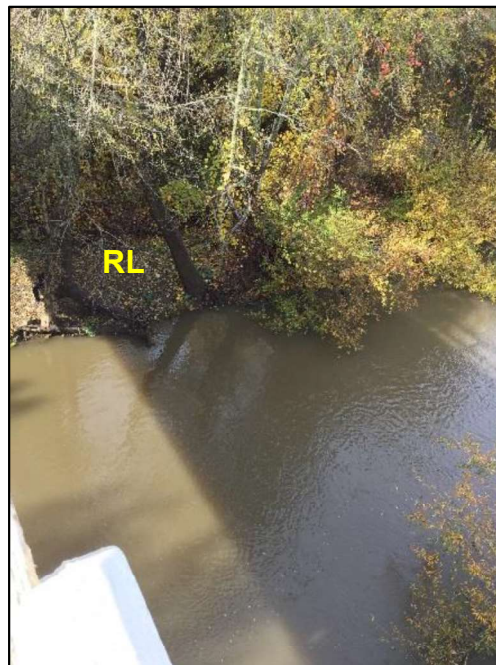
Site Images



Upstream



Downstream



Straight Across

RR = River Right RL = River Left

Photo date: 11/21/2017