

Latitude: 39.134562
Longitude: -123.186499

Driving Directions

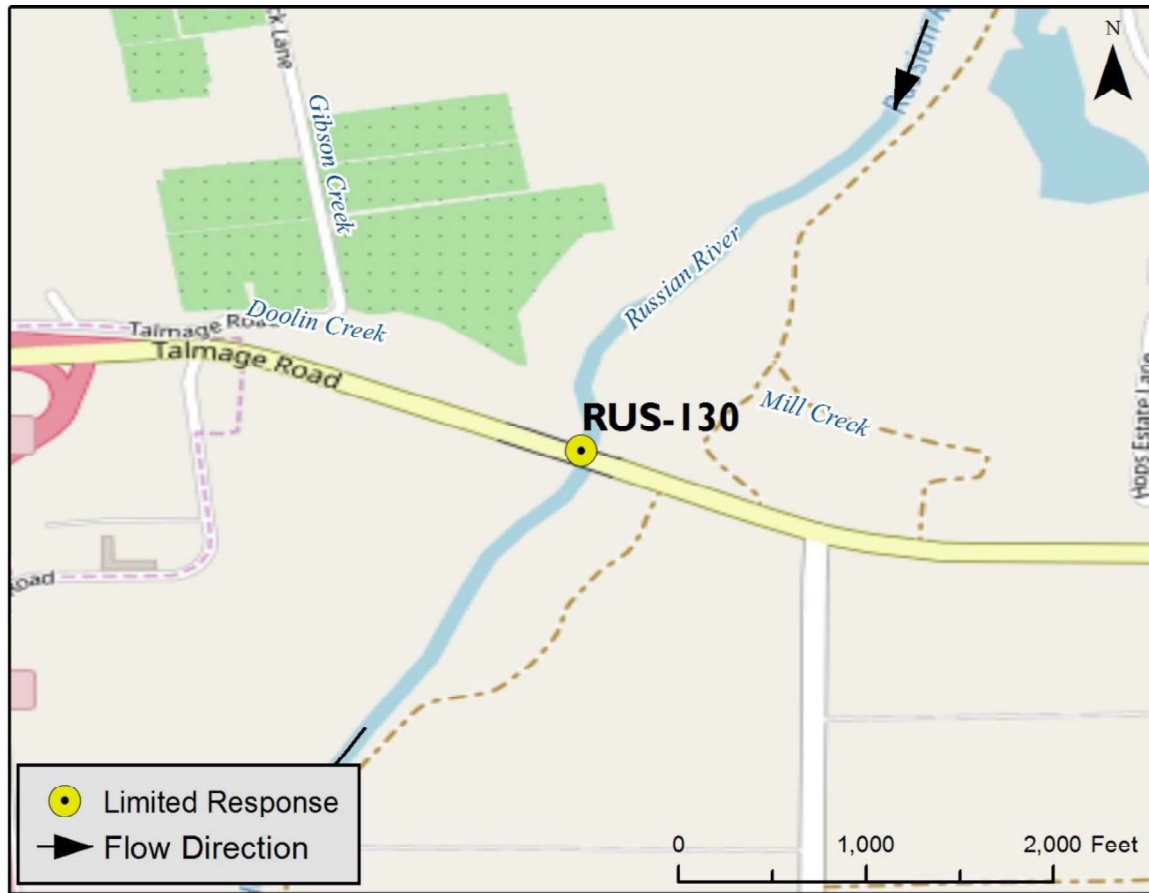
Highway Postmile: MEN 1.043

From Hwy 101 (in Ukiah), take exit 548A. Head east on CA-222 E/Talmage Rd for ~0.4mi. Park in a pullout on the NW side of the bridge.

Railroad Milepost: N/A

Nearest Address:
Thomas Guide #: 308/7F

Cell Service: Yes

Overview Street Map**Hazards, Restrictions and Advice for Responders**

- Access to shoreline down a narrow pathway
- Parking along a busy road
- Access through a locked gate
- Trip and fall hazards, slippery when icy or wet

Resources-At-Risk

Ecological: Red-bellied Newt, Foothill Yellow-legged Frog, Chinook salmon, coho salmon, steelhead trout, Russian River tule perch, Osprey

Economic: Nor-Cal Recycled Rock and Aggregates

Tribal: Contact the Native American Heritage Commission at (916) 373-3710.

Cultural and Historic: Contact the Northwest Information Center at (707) 664-0880.

Site Description and Field Notes

River Width: 25 meters
(82 feet)

Gradient: Medium

Site Contact/s:

Mendocino Co. Env. Health
(707) 234-6625

Nor-Cal Recycled Rock and
Aggregates
(707) 459-9636

Site Location/Segment: RUS-MN-B-005

Medium/heavy flow zone. Likely a high flow area in winter/spring. This site has vehicle access to near shore. Any boom strategies would have to be deployed north of the bridge. The east side of river is heavily vegetated.

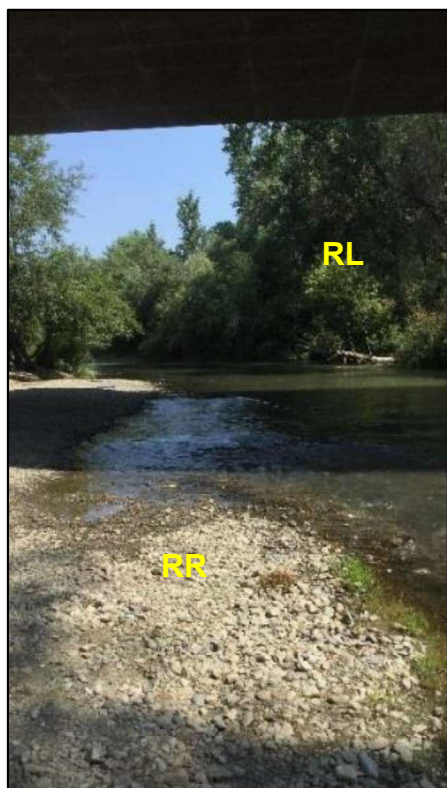
Vehicular Access: 4WD Pick-Up

Recreational Use: Rafting, Fishing

Boat Launches: N/A

ESI Shoreline Type: 6A – gravel beaches and gently sloping banks; 9B – vegetated low banks

Site Images



Upstream



Straight Across



Downstream

RR = River Right RL = River Left

Photo Date: 08/08/2017

Site Objectives: Collection of product from a release upstream.

Implementation: Under conditions that would allow for deployment of boom (low flow), set up a collection area on the west shore, north of the bridge. Wet conditions may make shoreline access difficult for response vehicles.

Staging Area Location and Capabilities/Amenities/Waste Management: Work trucks and vac trucks may be accessible to shoreline through locked gate on NW side of the bridge. Contact Mendocino County Environmental Health for information regarding access to the locked gate.

Response Strategy Map (overview)



Table of Response Resources

Type	Sub-Type	Size	Unit	QTY - Unit	Special Equipment or Comments
Boom	Swiftwater	8	inch	150 feet	
Anchors	Danforth	40	lb	2	Use 2 mid-stream anchors
Stakes				3	Shore-side stakes
Boat	skiff	14	ft	2	
Personnel				8	4 boat crew, 4 shoreside staff